



N. P. 1363
6-24

1927 NORTHERN PACIFIC RAILWAY COMPANY 1927

AUTHORITY FOR EXPENDITURE

YEAR 1927

1927

SUPERINTENDENT'S No.

M.F.C. 0

DEPT. No.

A. F. E. NO.

1

ENGINEERING DEPT. No. 1

Yellowstone

Div.

First

DISTRICT

STATE No. Dak.

VAL SEC. No. 2

AUTHORITY IS REQUESTED FOR A NET EXPENDITURE OF \$ 3,395.

Accounting distribution as follows: (Distribution to be made in General Office.)

	Operating Expenses	Profit and Loss	Net Operating Expenses	Net Profit and Loss
Cost of property retired	100.		100.	
Value of salvage	0.		565.	
Incidental costs				



Total to Operating Expenses	Original Cost Adjustment 665.
Total to Profit and Loss	Made in NOV 15 1927 19
To Material and Supplies	Original Cost Adjustment 665.
To Bills for Collection	Made in FEB 7 1928 19
To Other Accounts	
Net charge to investment account—Additions and Betterments	2,730.
Total of distribution	3,395.

Budget reference: Item 108 - Budget 1927

Class of Work: No. 4

Joint facility contract reference: None

The location is on this company's property. To secure rights, it will be necessary to do nothing

Location: Near Sweet Briar, Bridge 16 over Ravine

Title: Reinforce I Beam Spans

and

Reason: The present structure consists of two 25 foot I Beam Spans, 51 feet long and 16 feet high, on concrete masonry and cylinder piers, built in 1900. It was designed for 146 ton loading and is too light for the heavy type of power. It is proposed to place three additional I Beams in each span and make it good for E-65 loading.

Checked and Entered
President's Office

Work to be done by company force under charge of Division Superintendent

Accounting to concentrate in the office of Division Superintendent at Glendive

Signature and Title:

M. S. Clement
Bridge Engineer

Date Sept. 8, 1926

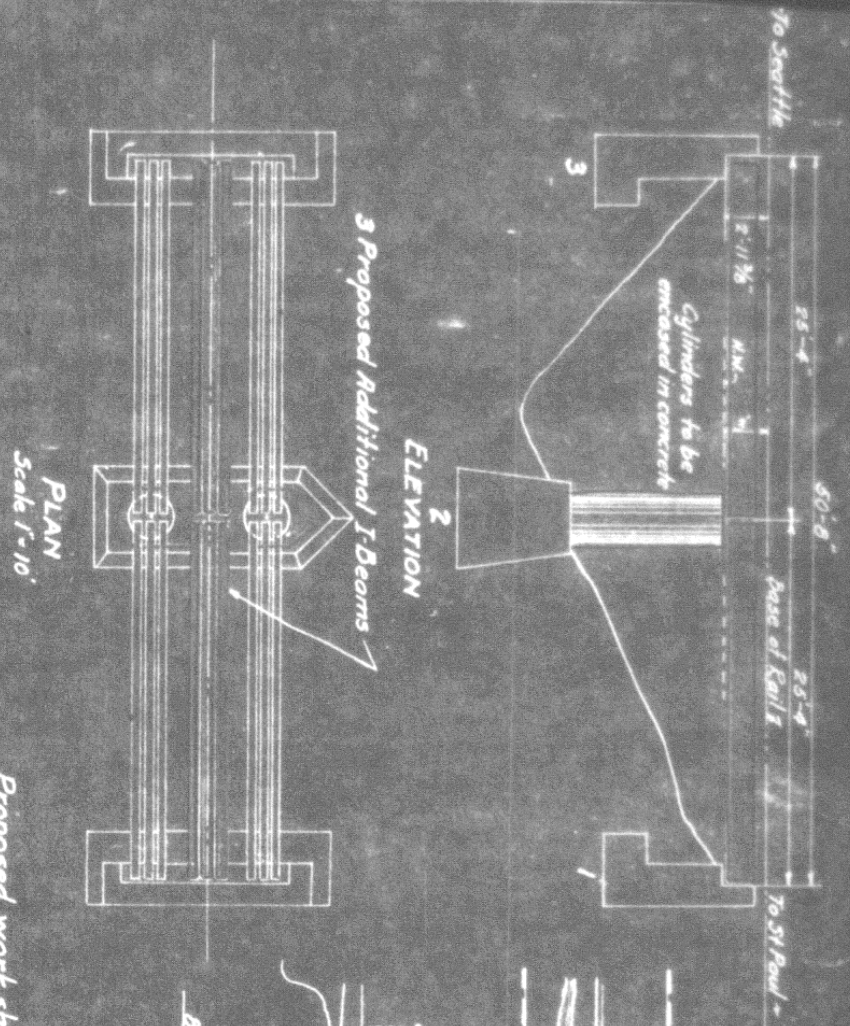
APPROVED:

General Superintendent	Asst. Chief Engr. or Engr. Maint. of Way	General Manager
Mech. Supt., Supt. Telegraph or Signal Engr.		Vice President
Chief Engineer		
For Comptroller	President	Date of Final Approval

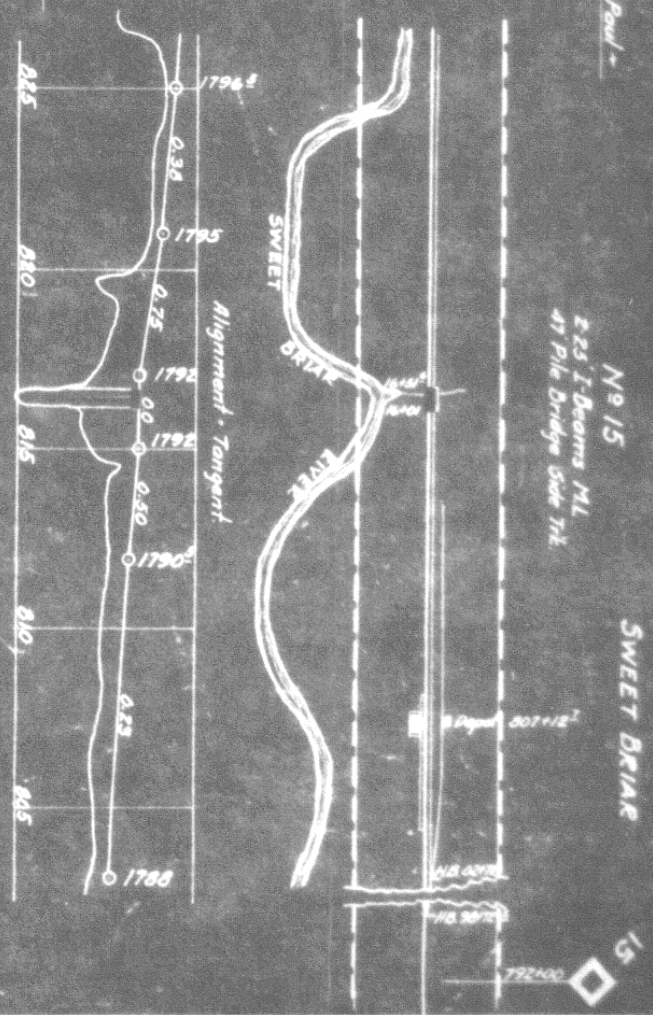
COMPTROLLER'S RECORD OF NOTICE OF APPROVAL AND OF COMPLETION

Work begun

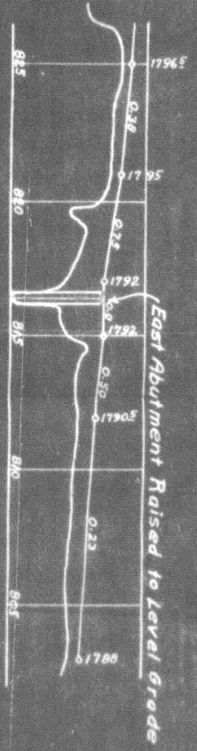
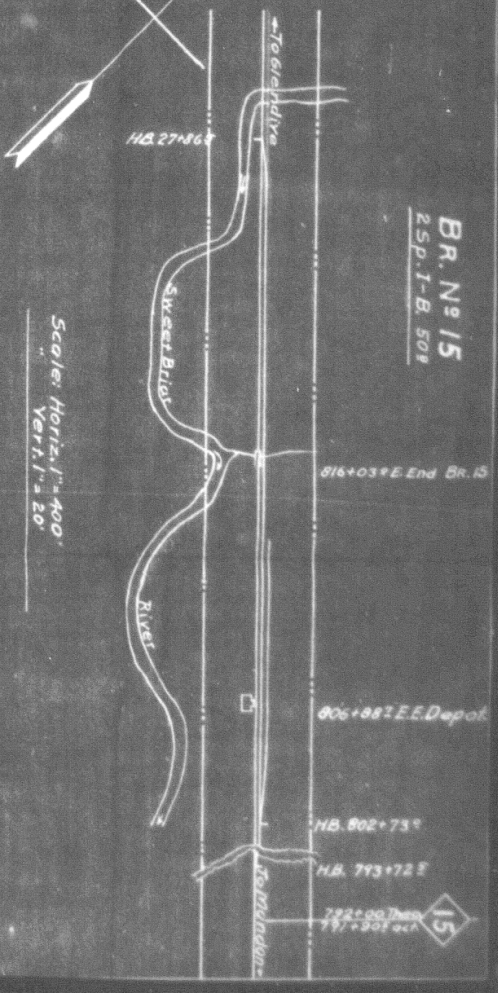
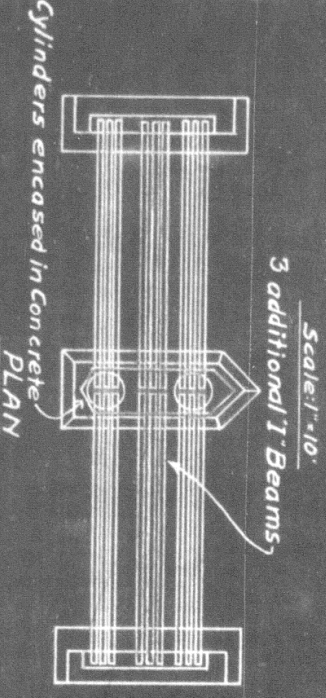
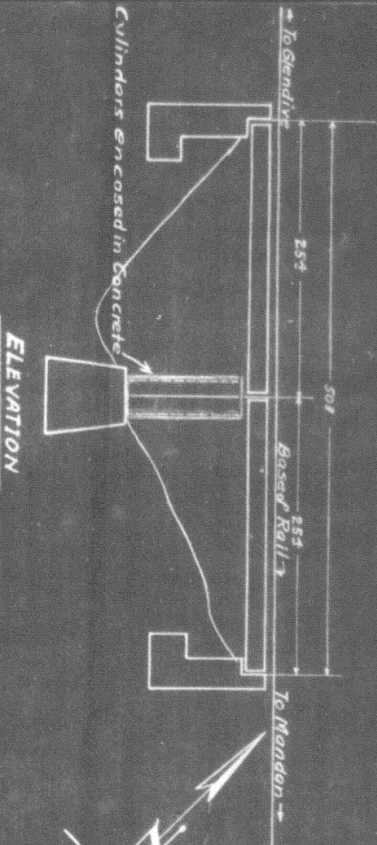
Work finished



Proposed work shown in Red.



N.P.R.I.
 Yellowstone Division
 N.D.A.K. VAL. SECT. 2
 BRIDGE 15 AT SWEET BRIAR, ND
 SKETCH SHOWING PROPOSED ADDITIONAL I-BEAMS
 MAKING SPANS GOOD FOR STAND LOADING
 Scales as noted.
 Office of Bridge Engineers St. Paul Minn. Sept. 17, 1926



For Detail See Bridge Engrs. Plan # 61064
Dated: StPaul, Oct. 8, 1926.

BR. No 15
2 SP. T-B. 508

Yell. Div.
Reinforce I Beam Spans Bridge No 15.
Near
Sweet Briar
NPRy.
1st Dist.

Office of Dist Engr. Livingston, Mont Oct. 14, 1927.
New Work Shown

Scale: 1" = 400'

Valuation Section No. Dak. No. 2.
Auth. under Imp. No 1-27 dated 12-4-26
Work begun March 1927
Work completed July 31-1927.