

Note: For class C (2 story) use the bill of material for 3rd class (2 story) 5-26-18 with the following changes:
 Add: 8 pcs 2" x 10" x 12" floor joists
 120 lbm 1" x 6" sheathing
 140 " 1" x 6" All floor joists drop siding
 100 " 1" x 12" 2" stringer
 1 pc 2" x 12" x 12" stair stringer
 1 " 2" x 10" x 12" steps
 Deduct: 3 pcs 3" x 10" x 12" joists
 6 " 3" x 10" x 12" studs
 4 " 2" x 4" x 12" posts

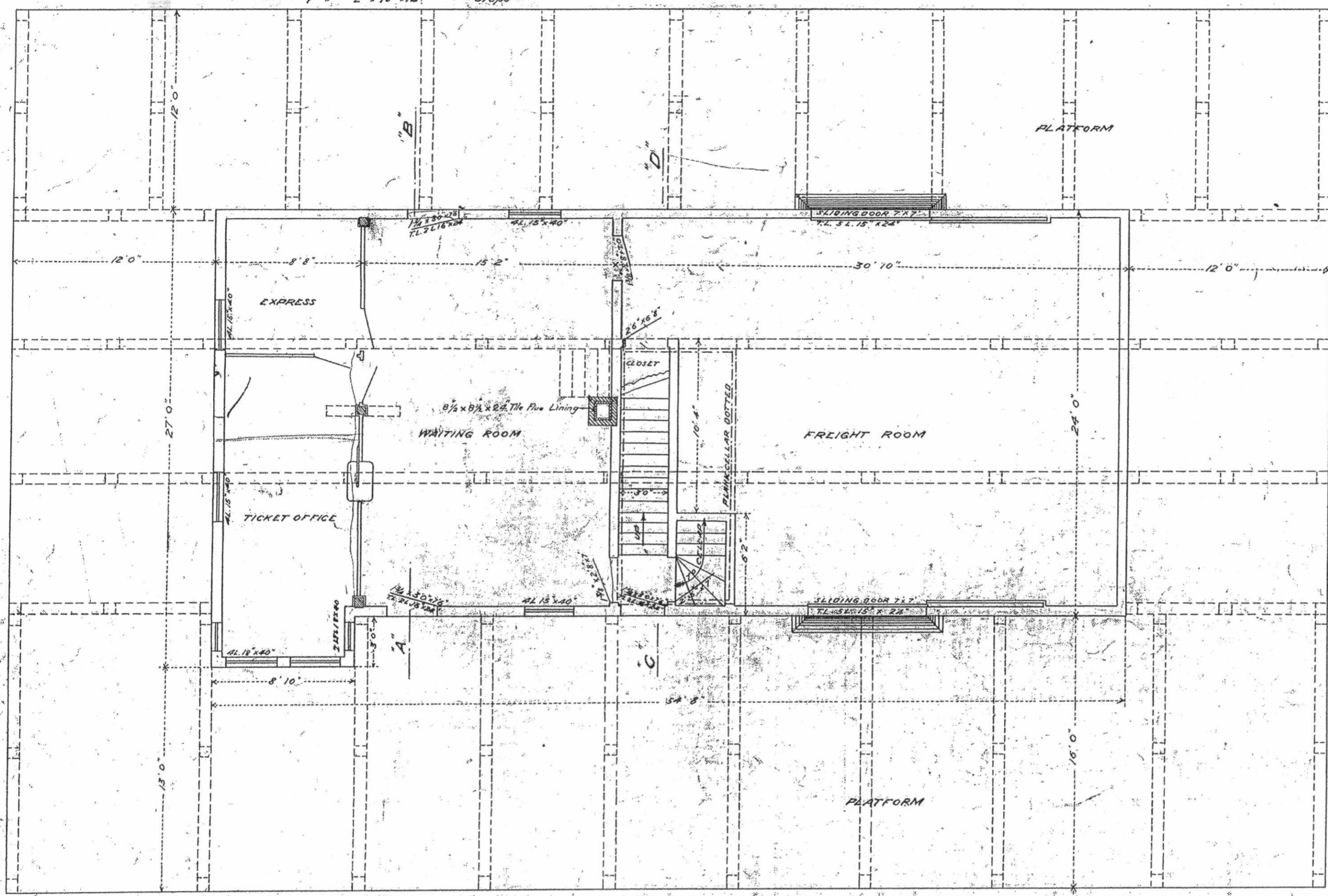
S-26-28

3-12-90
 Revised 7-8-91
 7-8-92

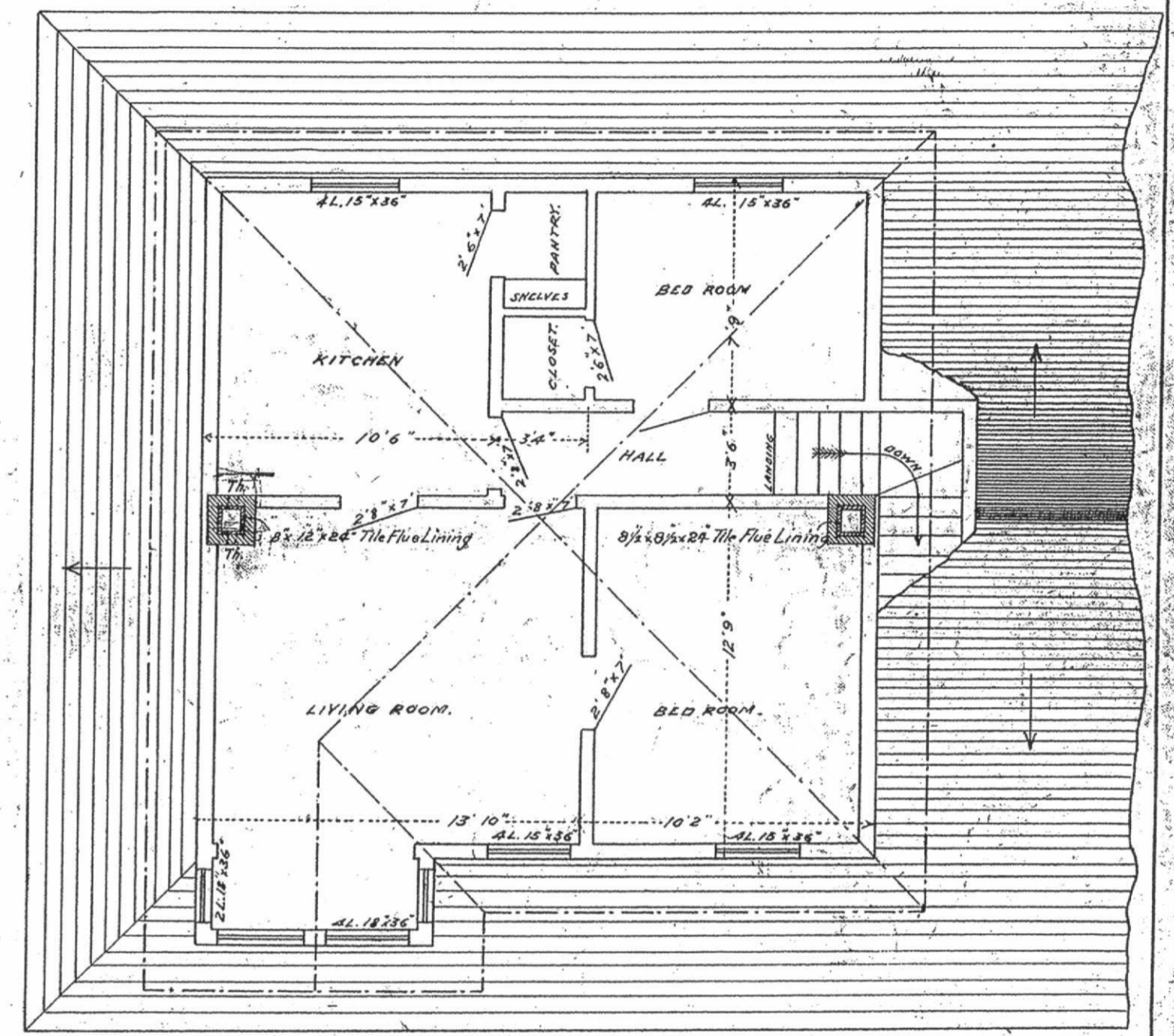
N.P.R.R.
STANDARD PLAN
 OF
 CLASS-C- 2STORY
COMBINATION DEPOT

SCALE 3/16" = 1'

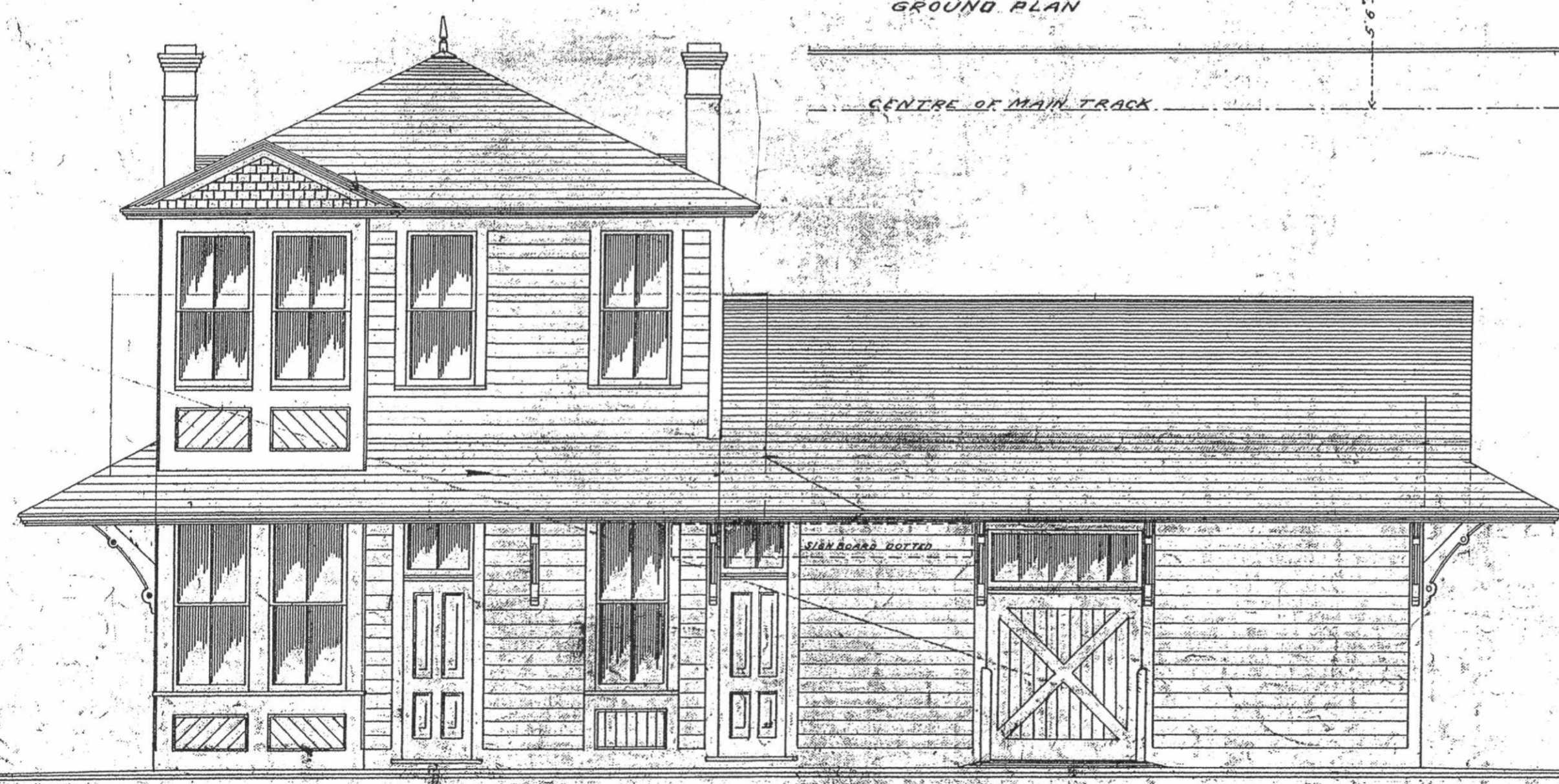
J. W. Hendrick
 Chief Engineer



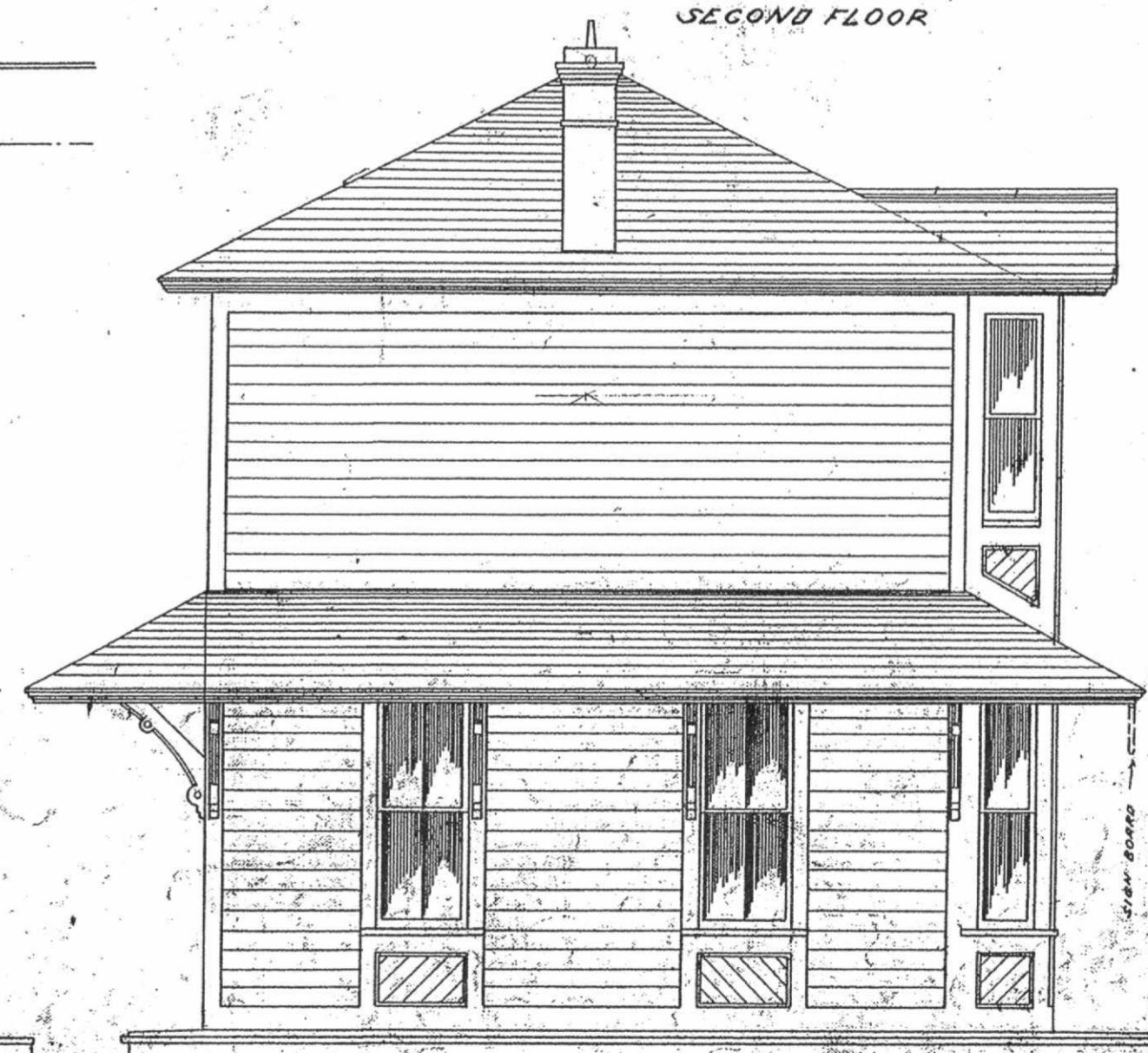
GROUND PLAN



SECOND FLOOR



FRONT ELEVATION



END ELEVATION

CENTRE OF MAIN TRACK