

PUGET

ALKI POINT

SOUND

BAY

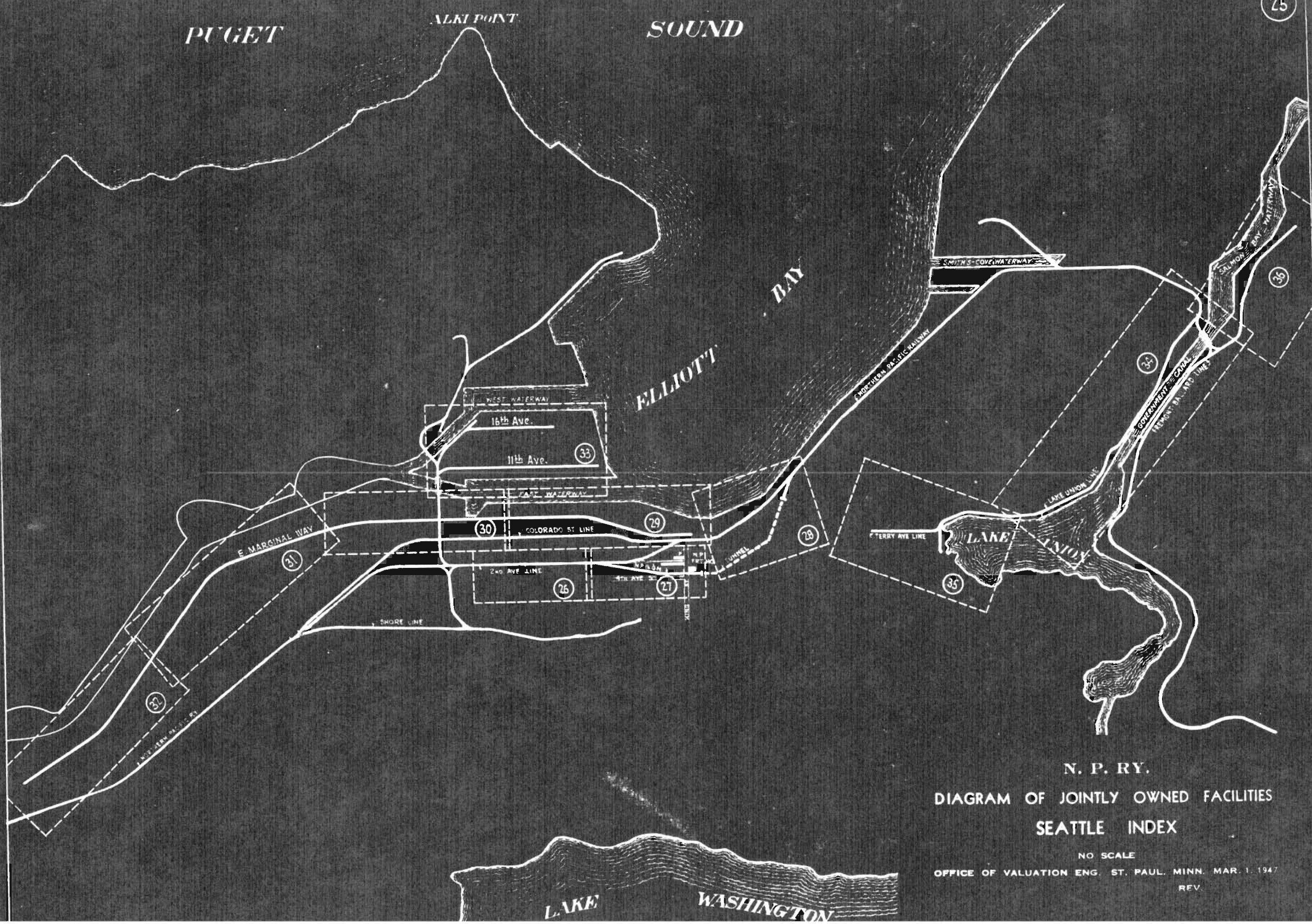
ELLIOTT

LAKE

UNION

LAKE

WASHINGTON



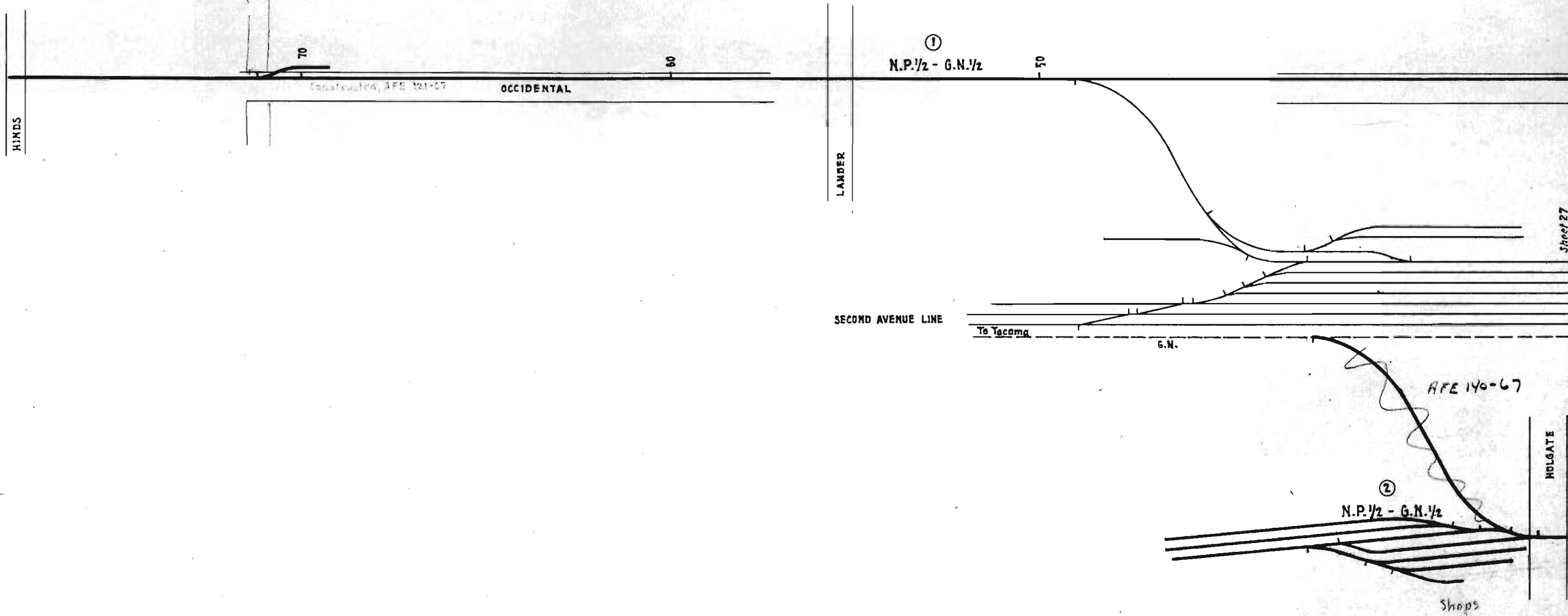
N. P. RY.

DIAGRAM OF JOINTLY OWNED FACILITIES
SEATTLE INDEX

NO SCALE

OFFICE OF VALUATION ENG. ST. PAUL. MINN. MAR. 1, 1947
REV.

Northern Pacific Railway Historical Association 2017



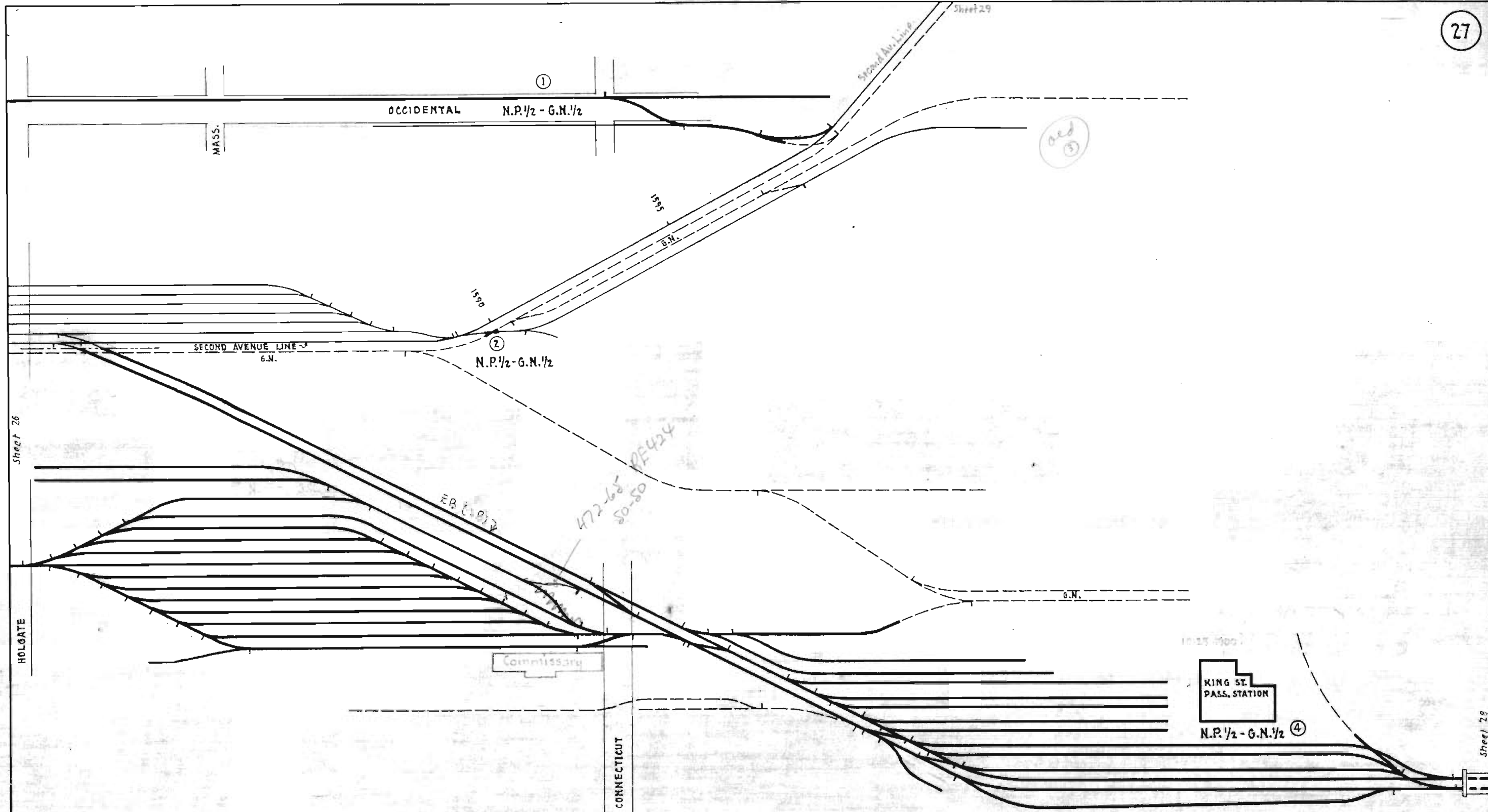
CONTRACT REFERENCES

REF. NO.	CONTRACT DATES	FILE NUMBERS		
		ASST SECY	CHIEF ENG	COMPT
①	Deed 3 3-10-09 (Letter 3-17-14)		2352	6532
②	? 5-21-24			

Maintenance Cont. 7-26-27

N. P. RY.
 DIAGRAM OF JOINTLY OWNED FACILITIES
 SEATTLE

NO SCALE
 OFFICE OF VALUATION ENG. ST. PAUL, MINN. MAR. 1, 1947
 REV. 1-10-55



CONTRACT REFERENCES

REF. NO.	CONTRACT DATES	FILE NUMBERS		
		ASST SECY	CHIEF ENG	COMPT
①	3-10-09 (Letter 3-17-14) <i>Deed?</i>		2352	6532
②	9-29-10, Supp. 8-18-42 (10-30-6)	5686		1155A
③	1-3-14 and letter 8-15-07	7682	4256	
④	5-1-09 5-21-24 <i>Deed</i>	13346	C2039	

Maintenance Cont. 7-26-27

Doc. 25978

Oper. Cont. 1-3-14

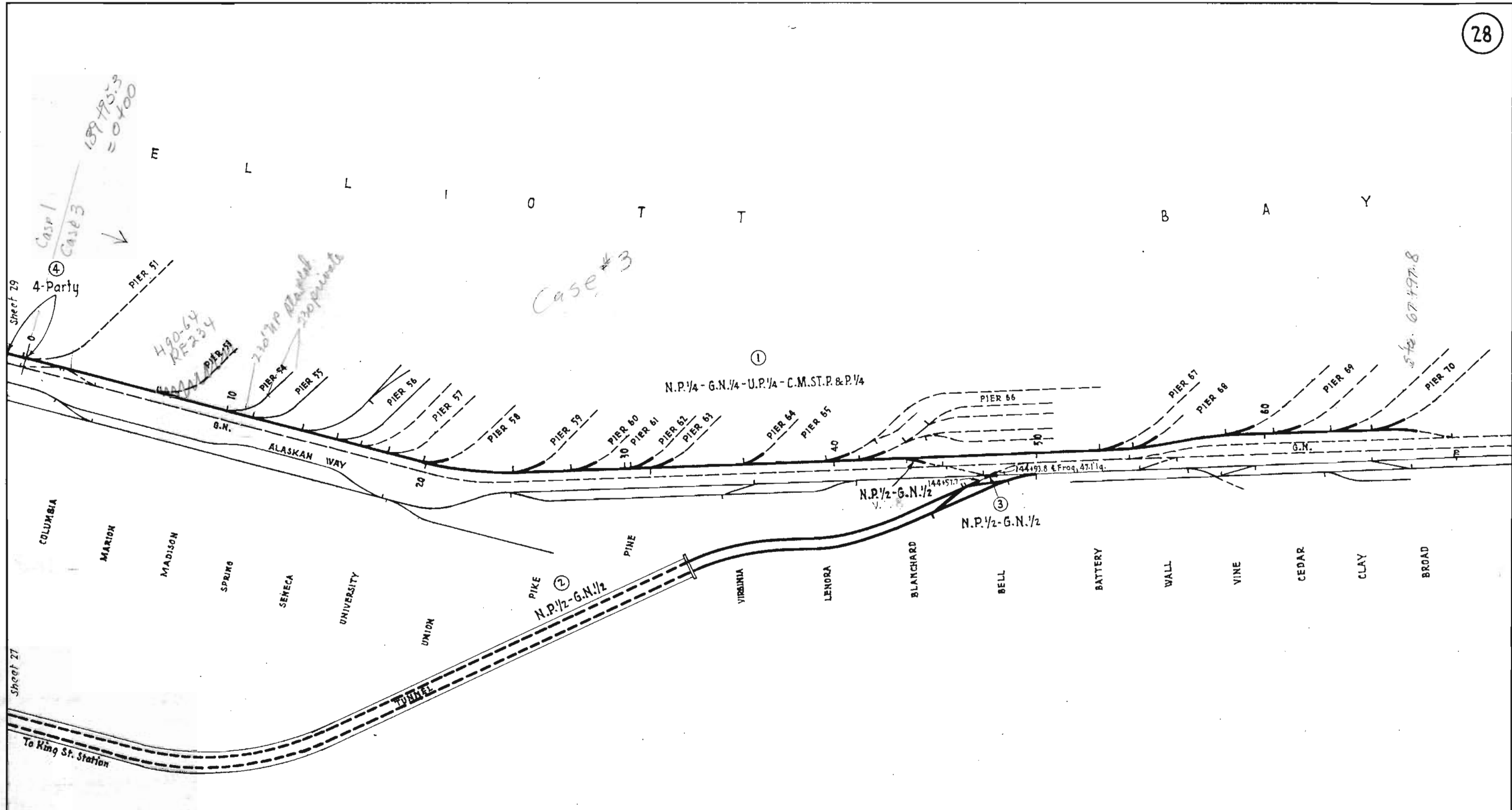
Joint operation of jointly owned property, Contract 3-1-09 (A.S. Doc. 4541) superseded by A.S. Doc. 13346, 5-21-24

Joint use of King St. coach yard, Contract 12-29-09, A.S. Doc. 5055, C.E. file 3188.

Sale of half interest in N.P. portion of Commissary building (at Conn. St.) 4-13-23, AFE 1014-23.

N. P. RY.
DIAGRAM OF JOINTLY OWNED FACILITIES
SEATTLE

NO SCALE
OFFICE OF VALUATION ENG. ST. PAUL, MINN. MAR. 1, 1947
REV. 8-20-55



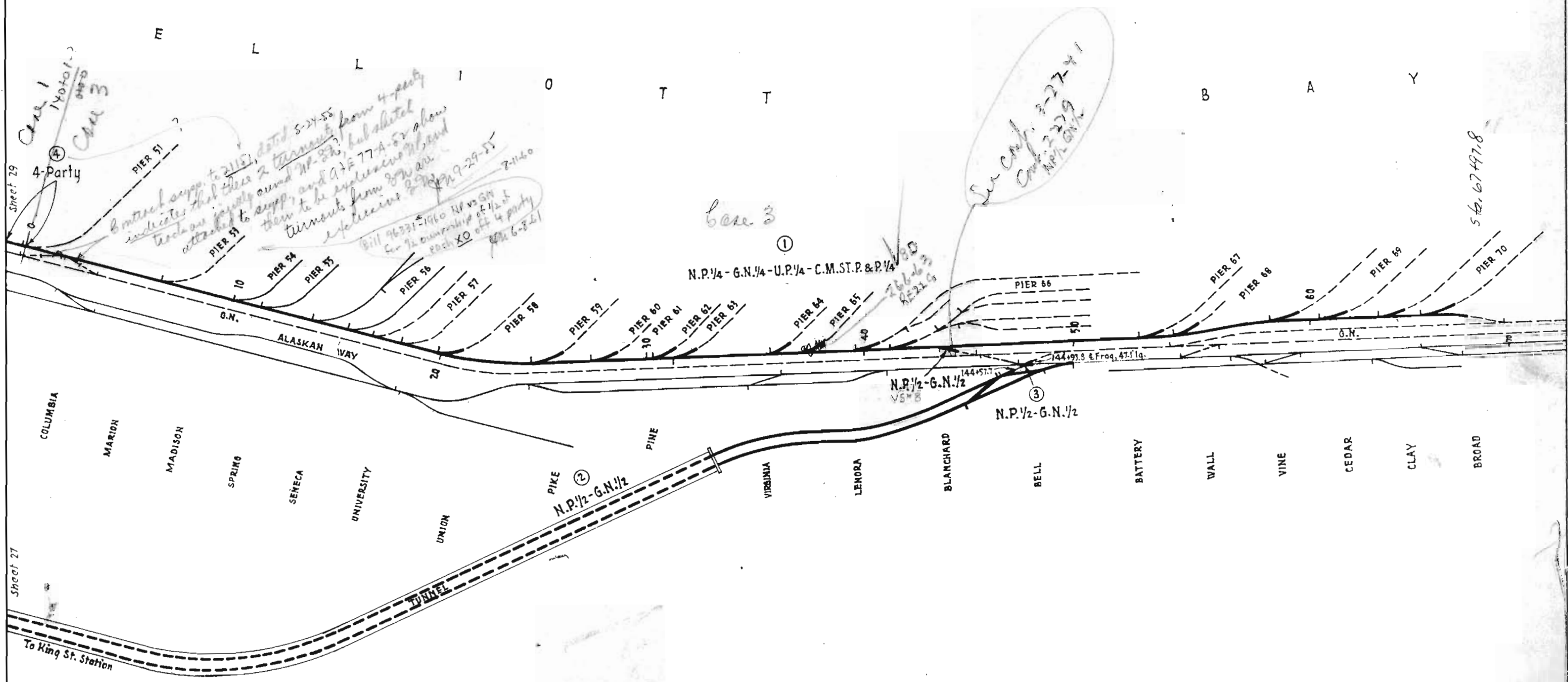
CONTRACT REFERENCES

REF. NO.	CONTRACT DATES	FILE NUMBERS		
		ASST SECY	CHIEF ENG	COMPT
①	7-8-29	15310	c 2611	7812
②	5-4-09 5-21-24	13346	c 2039	
③	9-24-16, Supp. 8-10-47 10-30-67	5686		1155A
④	8-15-51	21151	11468-4	

Dec. 25 1978

N. P. RY.
 DIAGRAM OF JOINTLY OWNED FACILITIES
 SEATTLE

NO SCALE
 OFFICE OF VALUATION ENG. ST. PAUL, MINN. MAR. 1, 1947
 REV. 7-27-44



CONTRACT REFERENCES

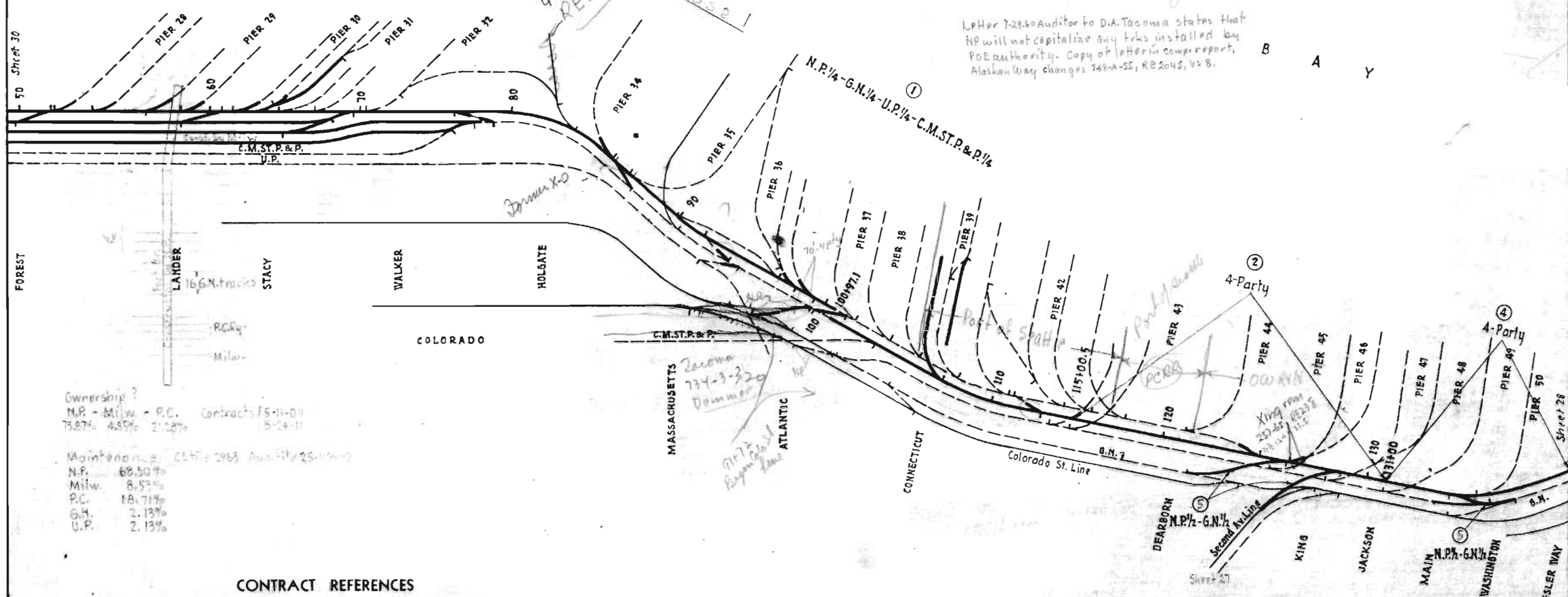
REF. NO.	CONTRACT DATES	FILE NUMBERS		
		ASST SECY	CHIEF ENG	COMPT
①	7-8-29	15310	C-2611	7812
②	5-21-24	13346	C 2039	
③	9-29-10, Supp. 8-10-42	5686		1155A
④	8-15-51	21151	11468-4	

N. P. RY.
 DIAGRAM OF JOINTLY OWNED FACILITIES
 SEATTLE

NO SCALE
 OFFICE OF VALUATION ENG. ST. PAUL. MINN. MAR. 1. 1947

Comp. Rep. for AFE 655-43 (RE 136) was written in 1947 (pencil only) and this sheet (29) was then brof to date in accordance with joint track information shown on CR sketch (circled in red on this sheet). Ownership of these tracks was questioned, repaired, unnumbered, report was kept in "holdout" until 1960 when it was closed and only one turnout was capitalized (Col pier 44).
 (All tracks are still owned as Eng kept track record as jointly owned)
 Jan 9-17-65
 T and sheet (29) will be corrected, if necessary.

L.P.H. 7-29-60 Auditor to D.A. Tacoma states that NP will not capitalize any trks installed by POE authority. Copy of letter in comp report, Alaskan way changes 748-A-55, RE 2045, V. 8.



Ownership?
 N.P. - Milw. - P.C. Contracts 75-11-07
 73.87% 4.85% 21.28% 5-24-11

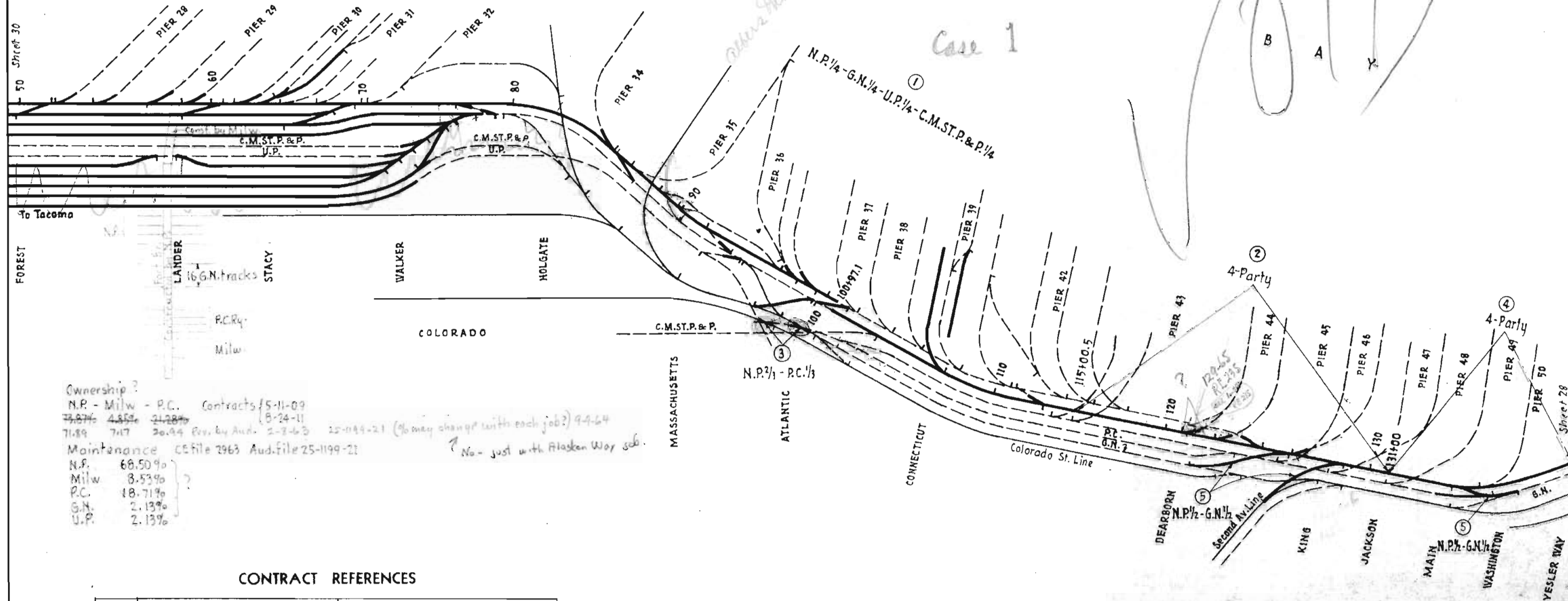
Maintenance C.E.H. 2963 Aug. 11/25-11-49
 N.P. 68.50%
 Milw. 8.53%
 P.C. 18.71%
 G.N. 2.13%
 U.P. 2.13%

CONTRACT REFERENCES

REF. NO.	CONTRACT DATES	FILE NUMBERS		
		ASST SECY	CHIEF ENG	COMPT
①	12-24-20	11958		
②	7-1-44	19597		
③	2-12-03	1293-A	4270-5	
④	8-15-51	21151	11468-4	
⑤	Pending			
○				

AFE 77-52

N. P. RY.
 DIAGRAM OF JOINTLY OWNED FACILITIES
 SEATTLE
 NO SCALE
 OFFICE OF VALUATION ENG. ST. PAUL, MINN. MAR. 1, 1947
 REV. 8-20-65



Ownership?
 N.P. - Milw - P.C. Contracts 5-11-09
 73.87% 4.85% 21.28% (8-24-11)
 71.89 717 20.99 Rev. by Aud. 2-7-63 25-044-21 (% may change with each job?) 9-9-64
 Maintenance CE file 2963 Aud. file 25-1199-21
 N.P. 68.50%
 Milw 8.53%
 P.C. 18.71%
 G.N. 2.13%
 U.P. 2.13%

No. - just with Alaskan Way sub.

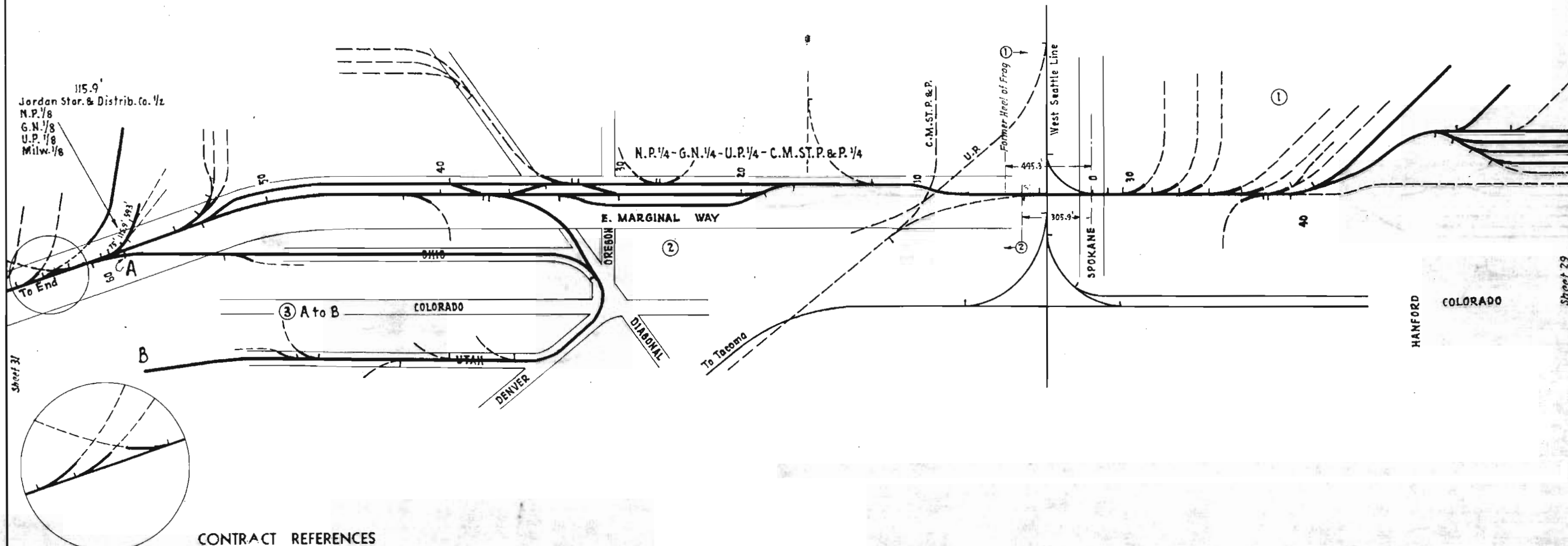
CONTRACT REFERENCES

REF. NO.	CONTRACT DATES	FILE NUMBERS		
		ASST SECY	CHIEF ENG	COMPT
①	12-24-20	11958		
②	7-1-44	19597		
③	2-13-03	1293-A	4270-5	
④	8-15-51	21151	11468-4	
⑤	Pending 5-23-55			
○				

AFE 77-52

N. P. RY.
 DIAGRAM OF JOINTLY OWNED FACILITIES
 SEATTLE

NO SCALE
 OFFICE OF VALUATION ENG. ST. PAUL, MINN. MAR. 1, 1947
 REV. 4-10-62



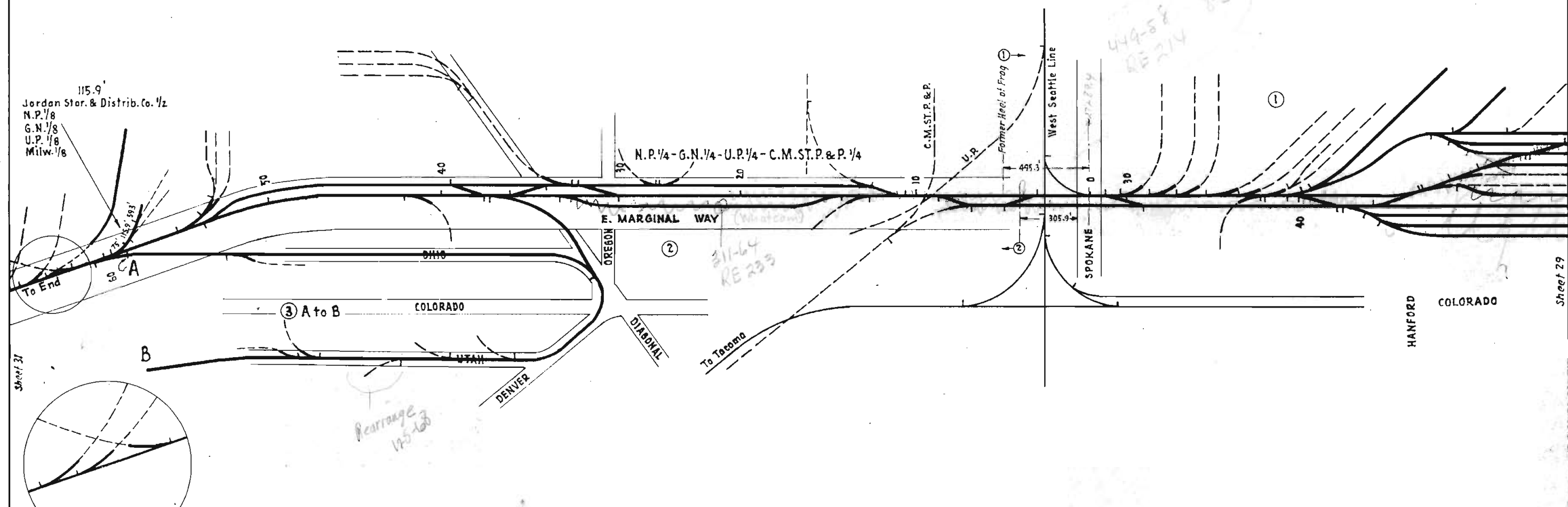
CONTRACT REFERENCES

REF. NO.	CONTRACT DATES	FILE NUMBERS		
		ASST SECY	CHIEF ENG	COMPT
①	12-24-20	11958		
②	7-15-18	10859		
③	6-7-40 Purchase	11139		

2-28-20 Operation

N. P. RY.
 DIAGRAM OF JOINTLY OWNED FACILITIES
 SEATTLE

NO SCALE
 OFFICE OF VALUATION ENG. ST. PAUL, MINN. MAR. 1, 1947
 REV. 8-20-55



CONTRACT REFERENCES

REF. NO.	CONTRACT DATES	FILE NUMBERS		
		ASST SECY	CHIEF ENG	COMPT
①	12-24-20	11958		
②	7-15-18	10859		
③	6-7-40 Purchase	11139		

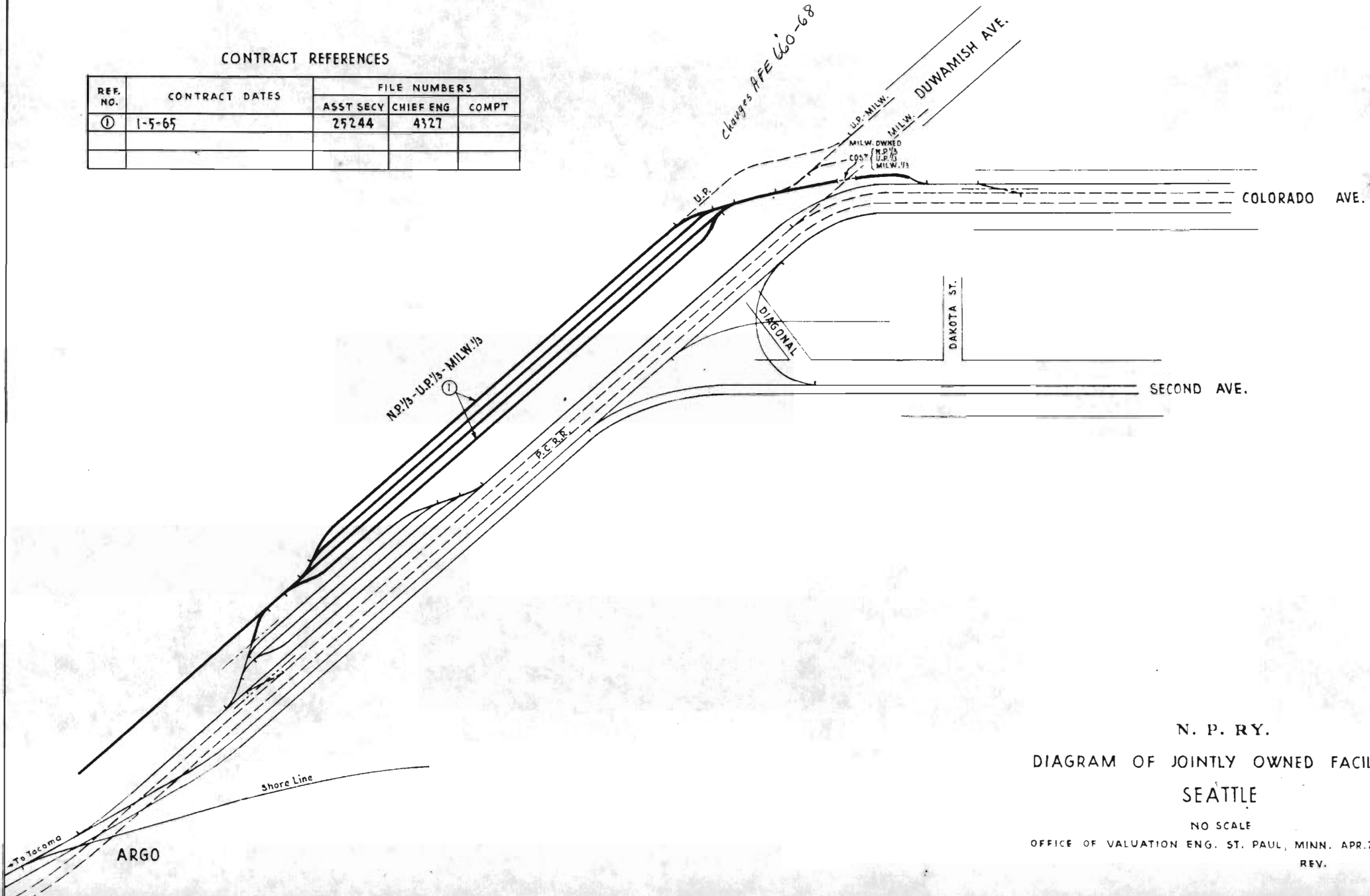
2-28-20 Operation

N. P. RY.
 DIAGRAM OF JOINTLY OWNED FACILITIES
 SEATTLE

NO SCALE
 OFFICE OF VALUATION ENG. ST. PAUL. MINN. MAR. 1. 1947
 REV. 4-20-62.

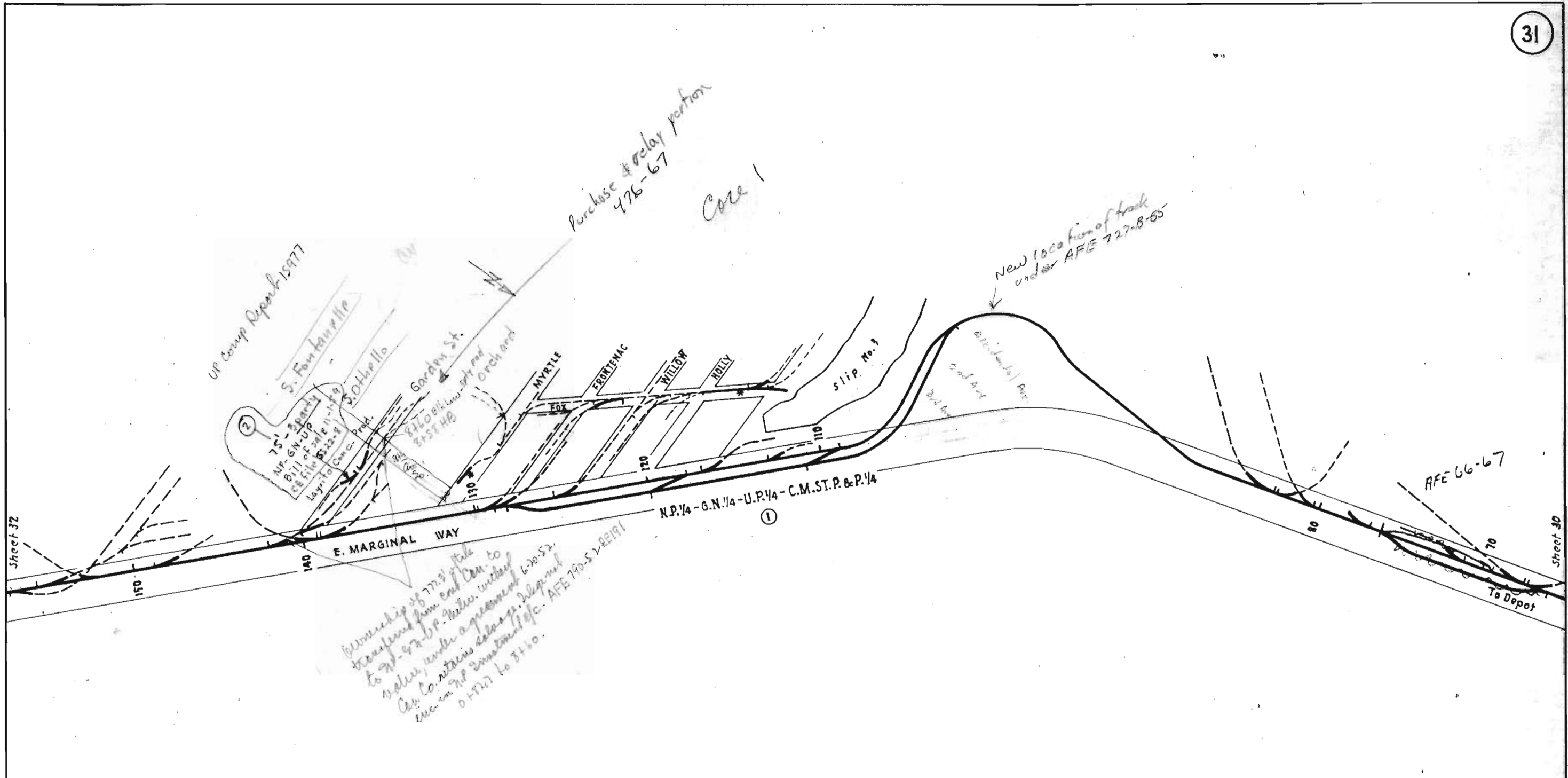
CONTRACT REFERENCES

REF. NO.	CONTRACT DATES	FILE NUMBERS		
		ASST SECY	CHIEF ENG	COMPT
①	1-5-65	25244	4327	



N. P. RY.
 DIAGRAM OF JOINTLY OWNED FACILITIES
 SEATTLE
 NO SCALE
 OFFICE OF VALUATION ENG. ST. PAUL, MINN. APR. 26, 1966
 REV.

Northern Pacific Railway Historical Association 2017



CONTRACT REFERENCES

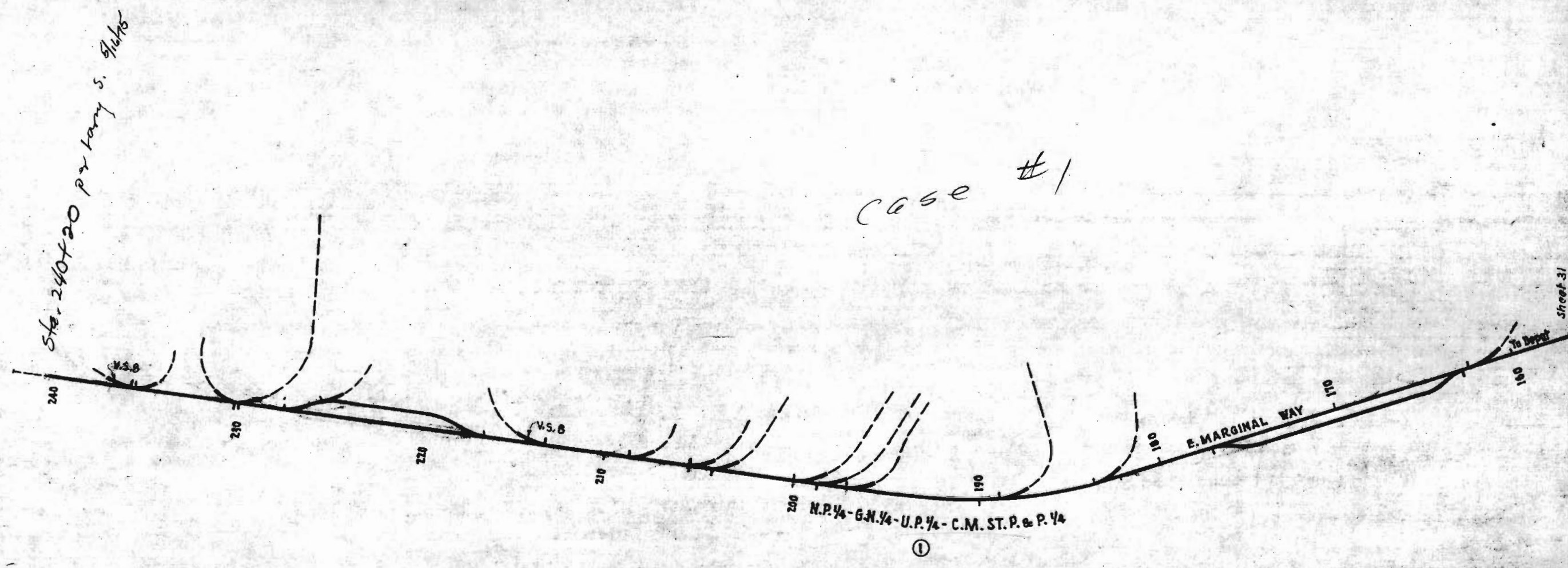
REF. NO.	CONTRACT DATES	FILE NUMBERS		
		ASST SECY	CHIEF ENG	COMPT
①	7-15-18	10859		
②	11-1-59 <i>bill of sale w-14338</i>		5522-8	
○				

*Permit by King County, dated 1-22-45

N. P. RY.
 DIAGRAM OF JOINTLY OWNED FACILITIES
 SEATTLE

NO SCALE
 OFFICE OF VALUATION ENG. ST. PAUL, MINN. MAR. 1, 1947
 REV. 7-27-64

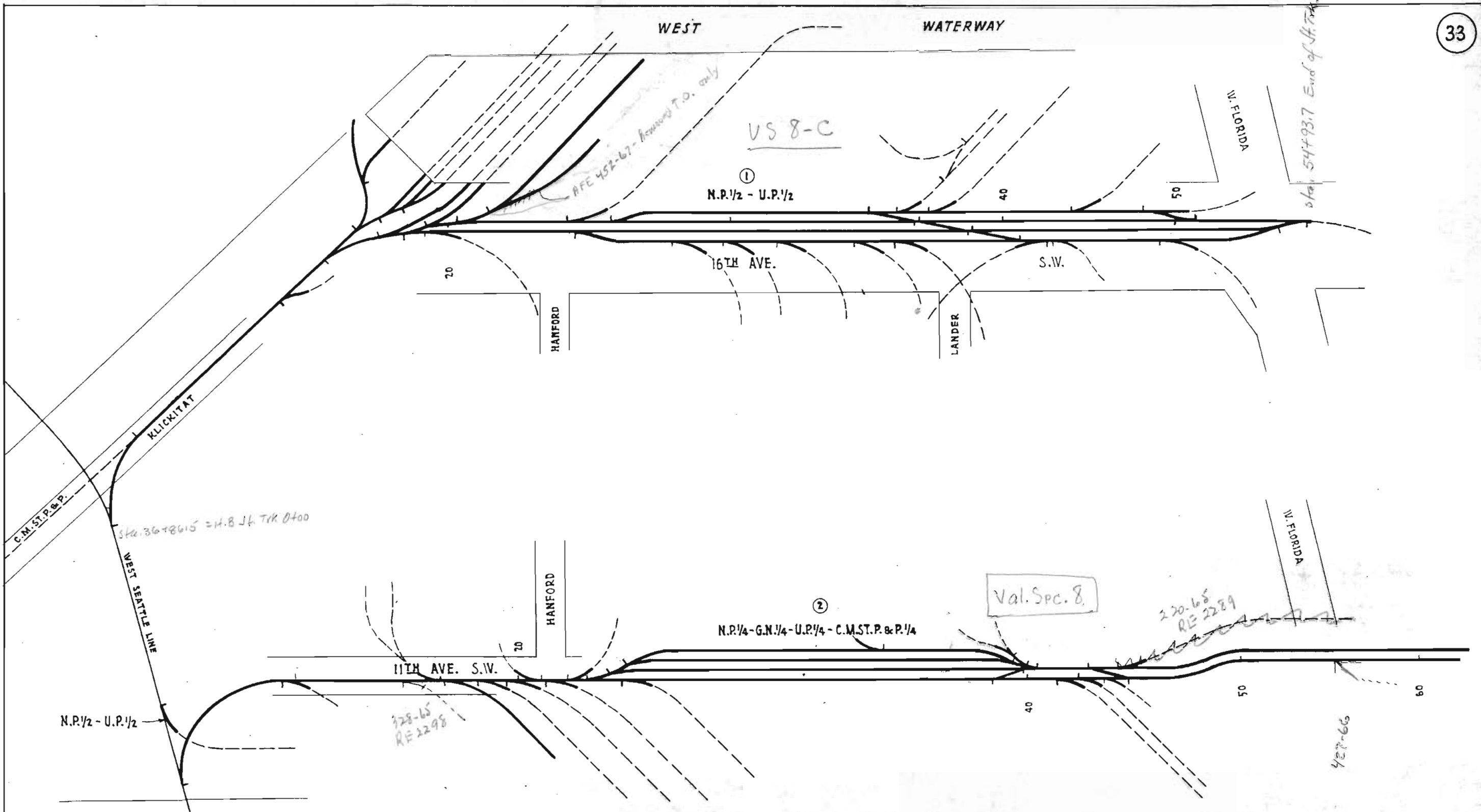
Northern Pacific Railway Historical Association 2017



CONTRACT REFERENCES

REF. NO.	CONTRACT DATES	FILE NUMBERS		
		ASST SECY	CHIEF ENG	COMPT
①	7-15-18	10859		
○				

N. P. RY.
 DIAGRAM OF JOINTLY OWNED FACILITIES
 SEATTLE
 NO SCALE
 OFFICE OF VALUATION ENG. ST. PAUL, MINN. MAR. 1, 1947
 REV. 8-20-65



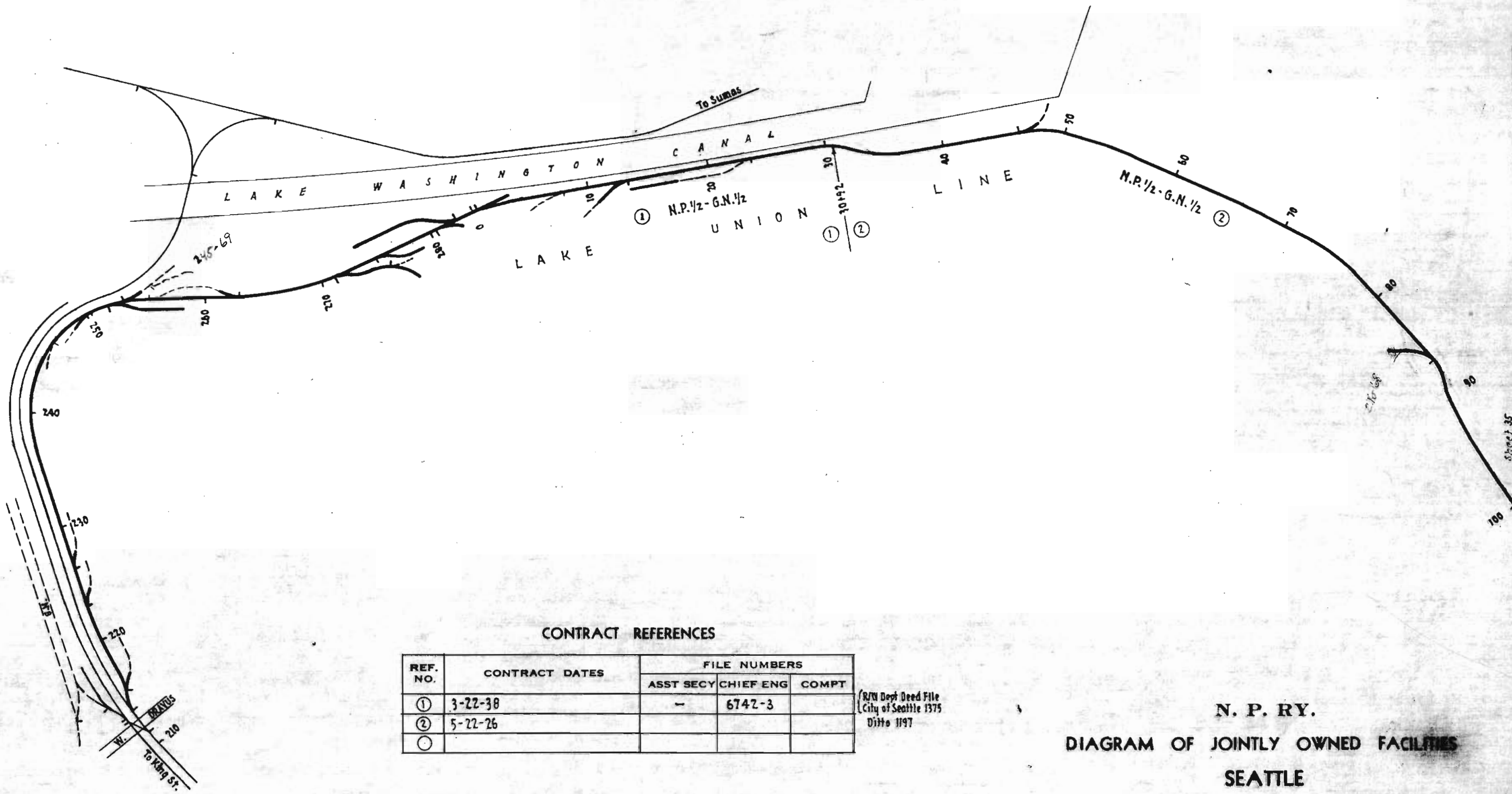
CONTRACT REFERENCES

REF. NO.	CONTRACT DATES	FILE NUMBERS		
		ASST SECY	CHIEF ENG	COMPT
①	6-30-11	6016		6892
②	11-28-45 (effective as of 3-1-41)	19257		
○				
○				

Deed 11-1-27 Purchase 1/2 interest
 3-1-41 Sale of 1/2 interest to G.N. & Milw.

N. P. RY.
 DIAGRAM OF JOINTLY OWNED FACILITIES
 SEATTLE

NO SCALE
 OFFICE OF VALUATION ENG. ST. PAUL, MINN. MAR. 1, 1947
 REV. 8-20-65



CONTRACT REFERENCES

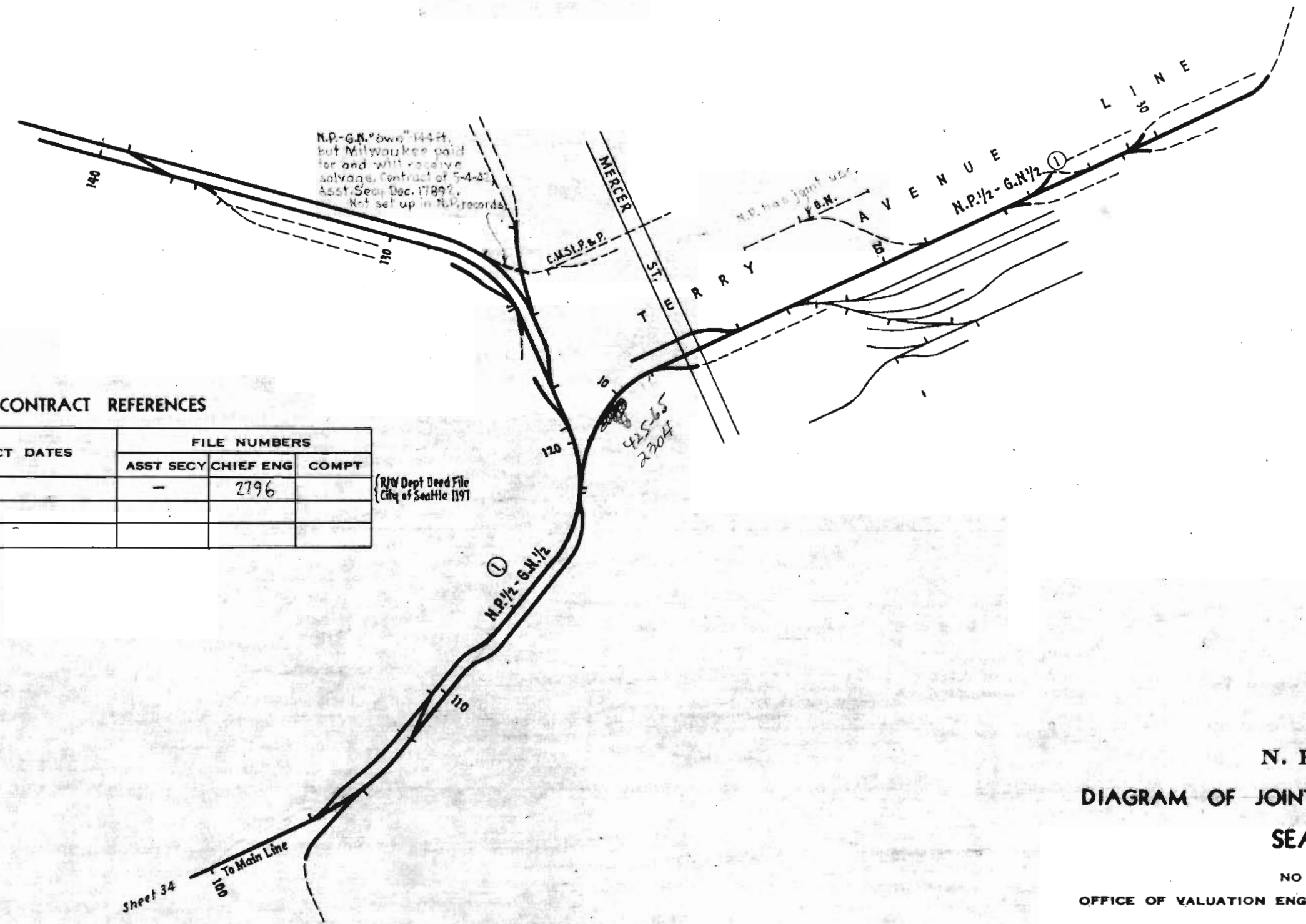
REF. NO.	CONTRACT DATES	FILE NUMBERS		
		ASST SECY	CHIEF ENG	COMPT
①	3-22-38	-	6742-3	
②	5-22-26			
○				

(R/W Dept Deed File
City of Seattle 1375
Ditto 1197

N. P. RY.
DIAGRAM OF JOINTLY OWNED FACILITIES
SEATTLE

NO SCALE
OFFICE OF VALUATION ENG. ST. PAUL, MINN. MAR. 1, 1947
REV. 8-20-65

Northern Pacific Railway Historical Association 2017



CONTRACT REFERENCES

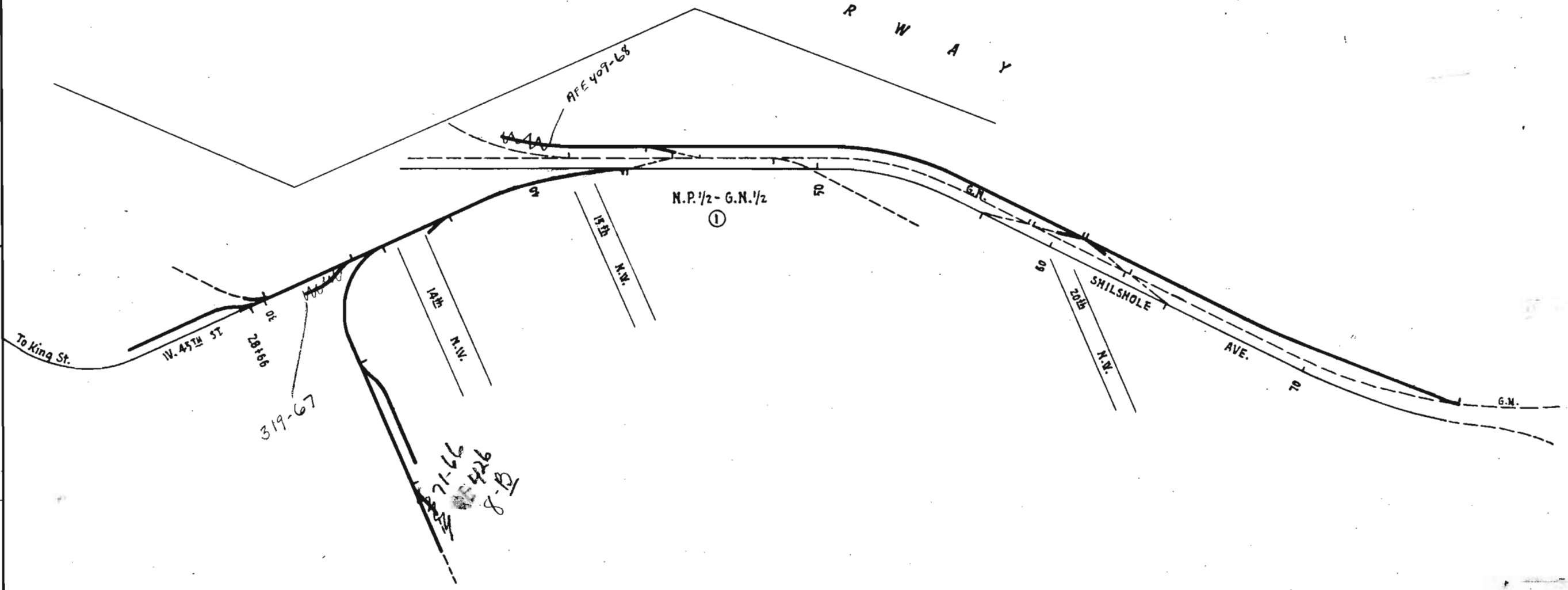
REF. NO.	CONTRACT DATES	FILE NUMBERS		
		ASST SECY	CHIEF ENG	COMPT
①	5-22-26	-	2796	
○				
○				

(R/W Dept Deed File City of Seattle 1197)

N. P. RY.
 DIAGRAM OF JOINTLY OWNED FACILITIES
 SEATTLE

NO SCALE
 OFFICE OF VALUATION ENG. ST. PAUL, MINN. MAR. 1, 1947
 REV. 8-20-65

S A L M O N B A Y W A T E R W A Y



CONTRACT REFERENCES

REF. NO.	CONTRACT DATES	FILE NUMBERS		
		ASST SECY	CHIEF ENG	COMPT
①	6-25-91, Supp. 1-25-16, 5-1-20, 10-11-21	8045	4114	2092
○				

N. P. RY.
 DIAGRAM OF JOINTLY OWNED FACILITIES
 SEATTLE

NO SCALE
 OFFICE OF VALUATION ENG. ST. PAUL, MINN. MAR. 1, 1947
 REV. 7-27-64