

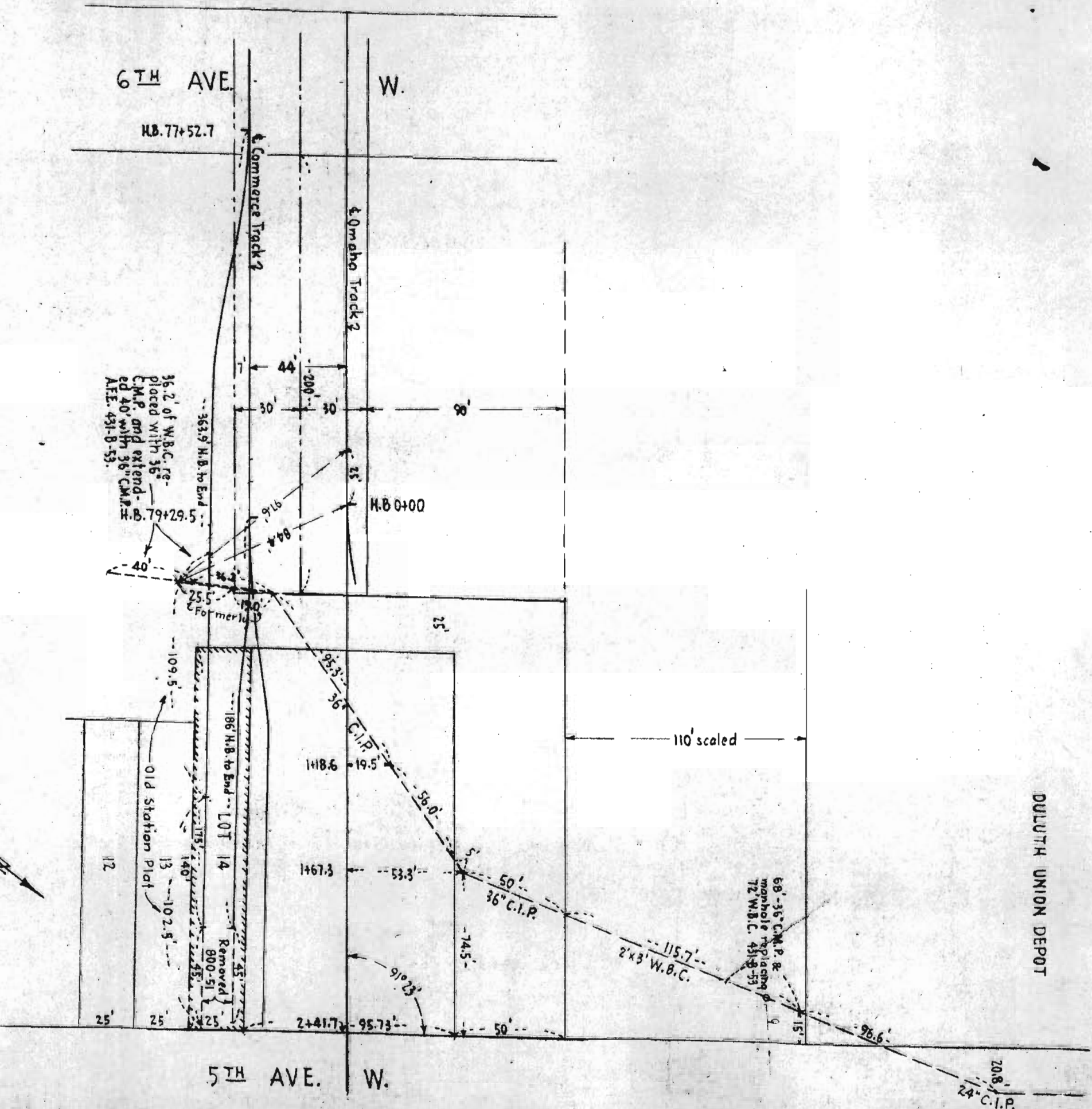
CONTRACT REFERENCES

REF. NO.	CONTRACT DATES	FILE NUMBERS		
		ASST SECY	CHIEF ENG	COMPT
①	3-1-86 Memo. Agree.	990		21
②	1-8-90 Memo. Agree.	728		
③	1-30-39	17386		
④	1-11-40	12950		4998

Deed 13, 2-5-86, X-Y
Deed 148 5-6-90

N. P. RY.
DIAGRAM OF JOINTLY OWNED FACILITIES
DULUTH

NO SCALE
OFFICE OF VALUATION ENG. ST. PAUL, MINN. MAR. 1, 1947
REV. 7-27-64



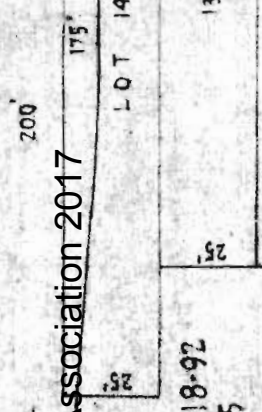
N.P.R.Y.
 COMMERCE TRACKS - DULUTH, MINN.
 STONE-ORDEAN-WELLS TRACKS
 1"=50'

Information from old station
 plats, A.F.E's, vault file 1151-35
 (sewer), etc.
 C.E. corr. file 8310

Northern Pacific Railway Historical Association 2017

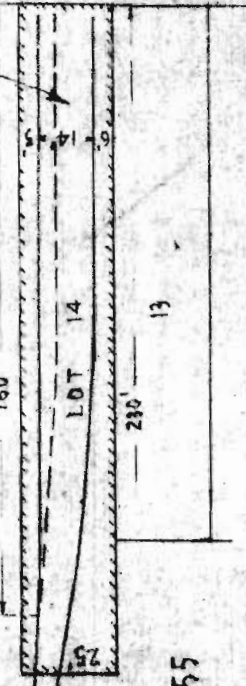
Exhibit attached to 3-party con- tract of 3-1-86, indicates track ended at R/W.

① PRIOR TO 12-18-92 IMP. SK. 455

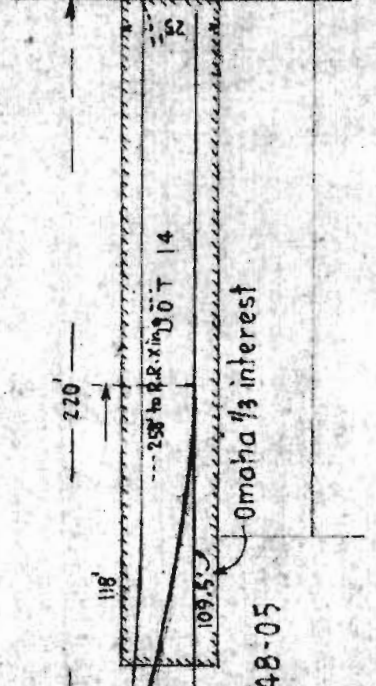


(1/3 interest in Lot 14 sold to Superior (Short Line (Omaha) 3-20-93 Deed 38)

② IMP. SK. 455



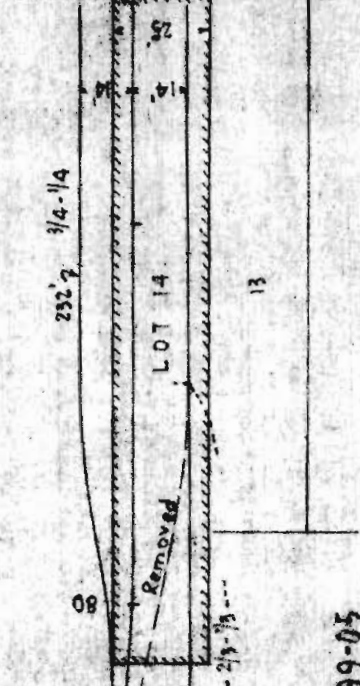
③ IMP. SK. 7035 AFE 1048-05 Omaha 1/3 interest



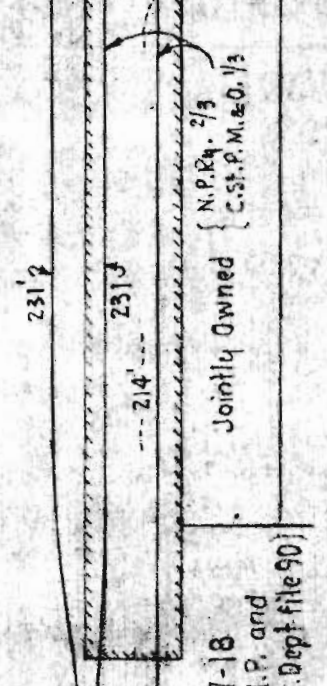
Omaha 5-10-11 Imp. Sk. 7615 shows Absolute Sta. Plat. 19111.8

New track 214 1/4-1/4

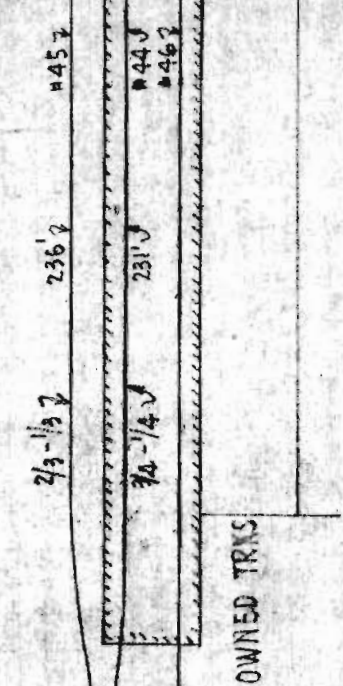
④ IMP. SK. 7615 AFE 499-05 N.P. 1/4 - Omaha 1/4



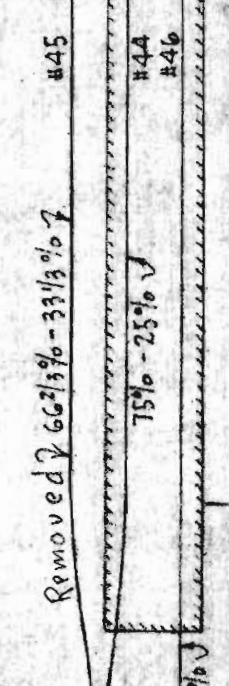
⑤ BLUE PRINT OF SKETCH, 2-7-18 Signed by P.E. Thian, Val. Eng., N.P. and G.W. Bond, Val. Eng., Omaha. (Val. Dept file 90) Jointly Owned { N.P.Ry. 2/3 C.St.P.M.&O. 1/3



⑥ VAL. DEPT. FM 509 JOINTLY OWNED TRKS Vol. 1442, sh. 17 of 19



⑦ PRINT OF PORTION OF OMAHA STATION PLAT ATTACHED TO LETTER OF 5-20-21, H.C. ESTEBE TO P.E. THIAN. (Val. Dept. file 90)



COMMERCE TRACKS - DULUTH, MINN. STONE-ORDEAN-WELLS TRACKS