

NORTHERN PACIFIC RAILWAY COMPANY

AUTHORITY FOR EXPENDITURE

1923

Superintendent's No. 3
No.

Dept. No.
Engineering Dept. No. 23(23)

Year: 1923

IDAHO Div.

FIRST - District State MONTANA Val. Sec. No. 5
Branch

A. F. E. No. 103

AUTHORITY IS REQUESTED FOR A NET EXPENDITURE OF \$ 194

Accounting distribution as follows: (Distribution to be made in General Office.)

	Operating Expenses	Profit and Loss	Net Operating Expenses	Net Profit and Loss
Cost of property retired	\$ 110			
Value of salvage				
Incidental costs			110	
Total to Operating Expenses			5	
Total to Profit and Loss				
To Material and Supplies				\$ 115
To Bills for Collection				
To Other Accounts				
Net charge to investment account—Additions and Betterments				79
Total of distribution				\$ 194



Budget reference: *Not in Budget*

Joint facility contract reference: *Not joint*

Class of Work: No. 17

The location is _____ on this company's property. To secure rights, it will be necessary

Location: Thompson Falls, Montana.

Title *4x30'* high extension to freight house platform.

Reason: The Continental Oil Company are having located a distributing plant at Thompson Falls and are shipping from ten to twenty barrels of gas and oil practically every day, but our depot platform facilities are inadequate for the handling of these heavy barrels. The present platform is much lower than the car floor, making it difficult for the station force to roll up the heavy barrels into the cars.

It is proposed that a *4x30'* extension be placed at west end of the freight house platform as shown on the attached plan, raising the west end of the present platform on an incline from rear of the freight house door to the height of the car floor.

Original Cost Adjustment

Made in JUN 1923

Checked and Entered
President's Office



Work to be done by company force under charge of

Accounting to concentrate in the office of

Signature and Title

Superintendent

Superintendent

APPROVED:

Date Jan. 11th 19 23

General Superintendent.

Prin. Asst. Engr. or Engr. Maint. of Way.

Assistant General Manager.

Mech. Suppl. Supt. Telgh. or Signal Engr.

Chief Engineer.

General Manager.

Vice President.

Comptroller.

President.

Date of Final Approval { 1 26 23 } 19

COMPTROLLER'S RECORD OF NOTICE OF APPROVAL AND OF COMPLETION

Form No. 1345 issued

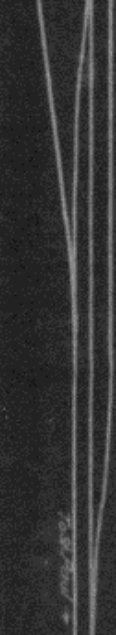
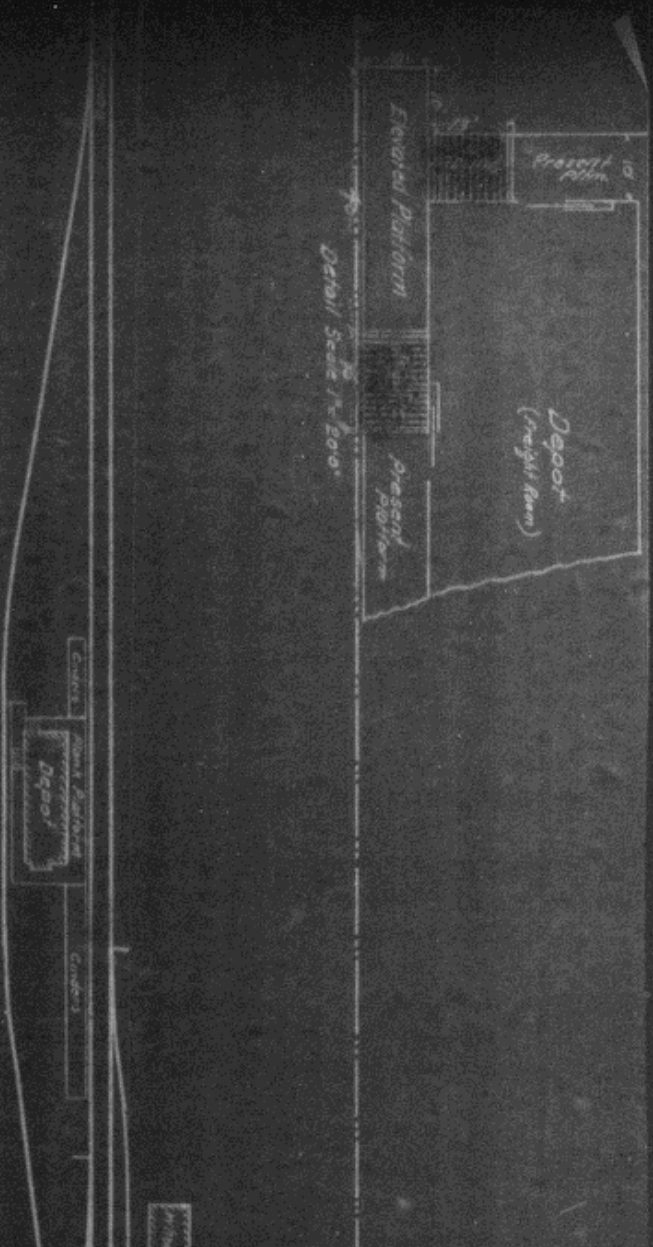
JAN 31 1923

Work begun

19

Work finished

Dec 7, 19 23



- 1/16"
- 1/8"
- 1/4"
- 1/2"

N.P.R.
 Idaho Div. 12 Sub Div.
 Mont. Valuation Sect 19.5
 Prop. High Platform & Incline
 of Depot
 at
THOMPSON FALLS
 Scale 1"=100'
 Office Dist. Engr Spokane
 Jan. 9th 1923

7-21-23