

1923

NORTHERN PACIFIC RAILWAY COMPANY
AUTHORITY FOR EXPENDITURE

1923

Year: 1922

Superintendent's No. 113
No.

Dept. No. Engineering Dept. No. 21(23)

A. F. E. No. 87

IDAHO Div.

P&L District Branch State WASH

Val. Sec. No. 1

AUTHORITY IS REQUESTED FOR A NET EXPENDITURE OF \$ 292

Accounting distribution as follows: (Distribution to be made in General Office.)

	Operating Expenses	Profit and Loss	Net Operating Expenses	Net Profit and Loss
Cost of property retired... \$		\$ 1541	\$	\$
Value of salvage.....		544		
Incidental costs.....				897
Total to Operating Expenses.....				352
Total to Profit and Loss Acct. #619. Loss on retired Road & Equip. 1240				1240
To Material and Supplies.....				644
To Bills for Collection.....				
To Other Accounts.....				
Net charge to investment account—Additions and Betterments.....				1541
Total of distribution.....				352

DEPRECIATION
DOCUMENT LABEL
EXHIBIT - 10

Budget reference: Not in Budget

Class of Work: No. 10

Joint facility contract reference: not joint

The location is on this company's property. To secure rights, it will be necessary

Location: Oakesdale, Washington.
Track decrease 1299.4 feet.
Title Removing 1299.4 feet passing track and

Reason: We are maintaining considerably more trackage than we need for operating lease purposes at Oakesdale and it is recommended that the 1299.4 feet passing track be removed.

We have two passing tracks at Oakesdale in addition to the house track and stock yard track. Leases are located on the house track which lies outside the passing track recommended for removal.

Original Cost Adjustment
Made in JUL 1923

Checked and Entered
President's Office

Work to be done by company force ^{contract} under charge of Superintendent
Accounting to concentrate in the office of Superintendent

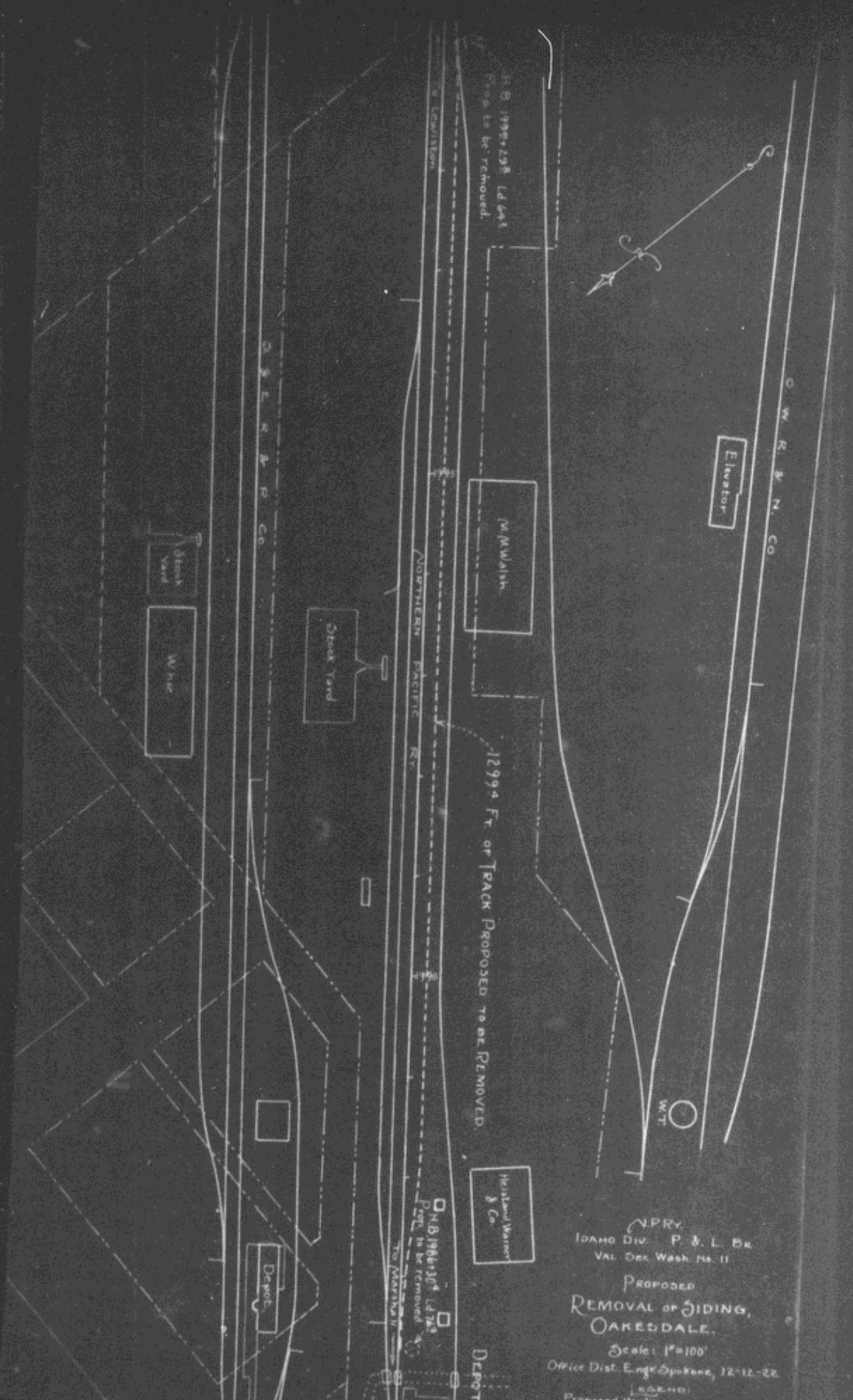
Signature and Title: *[Signature]* Date December 18th 1922

APPROVED:	<i>[Signature]</i> General Superintendent.	<i>[Signature]</i> Prin. Asst. Engr. or Engr. Maint. of Ways.	<i>[Signature]</i> Assistant General Manager.
	<i>[Signature]</i> Mech. Supt., Supt. Telg. or Signal Engr.	<i>[Signature]</i> Chief Engineer.	<i>[Signature]</i> General Manager.
	<i>[Signature]</i> For Comptroller.	<i>[Signature]</i> President.	<i>[Signature]</i> Vice President.

Date of Final Approval } 1 25 23 19

COMPTROLLER'S RECORD OF NOTICE OF APPROVAL AND OF COMPLETION

Form No. 1345 issued JAN 30 1923 Work begun 19 Work finished April 4 1923



H.S. 1992-238 L.D. 641
Prop. to be removed.

12994 Ft. of Track Proposed to be Removed.

H.S. 1986-104 L.D. 703
Prop. to be removed.

N.P.R.Y.
IDAHO DIV. P. & L. BR.
VAL. Des. Wash. No. 11

PROPOSED
REMOVAL OF SIDING,
OAKESDALE.

Scale: 1"=100'

Office Dist. Engr. Spokane, 12-12-22.

LEGEND:
Proposed Work
G.B.