

1923

NORTHERN PACIFIC RAILWAY COMPANY

AUTHORITY FOR EXPENDITURE

AUDITOR OF CAPITAL EXPENDITURES.

Year: 1923

1923

Superintendent's No. **Tax** Dept. No. **534**
No. **Engineering** Dept. No.

A. F. E. No. **79**

Yellowstone Div. **Eastern** District **State Montana** Branch **Val. Sec. No. 1**

AUTHORITY IS REQUESTED FOR A NET EXPENDITURE OF \$ 10,061.00.

Accounting distribution as follows: (Distribution to be made in General Office.)

	Operating Expenses	Profit and Loss	Net Operating Expenses	Net Profit and Loss
Cost of property retired	\$	\$	\$	\$
Value of salvage				
Incidental costs				
Total to Operating Expenses				
Total to Profit and Loss				
To Material and Supplies				
To Bills for Collection				
To Other Accounts				
Net charge to investment account—Additions and Betterments				
Total of distribution				10061.00
				10061.00

DEPRECIATION
DOCUMENT 15000
ENTERED
EXHIBIT

Budget reference: In budget.

Class of Work: No. 28

Joint facility contract reference: No joint property involved.

The location is not on this company's property. To secure rights, it will be necessary

Location: Glendive.

Title Assessment for paving in Special Improvement Dist. No. 4.

Reason: This R.F.A. is made to cover an assessment levied against our right of way as its proportion of the cost of paving with reinforced concrete in special improvement district No. 4, as shown on blue print attached. The total cost of this improvement was \$19,294.03. Of this sum the city assumed \$3004.38, and the balance, \$16,289.65, was assessed against the property in the district on an area basis. Our assessment has been checked at Glendive, and is correct.

Question of billing on lessees has been submitted to Mr. Watson.

Statement attached.

Blue print attached.

Work commenced Aug. 5, 1922.

Work completed Sept. 16, 1922.

Work to be done by ~~company~~ contract under charge of city.

Accounting to concentrate in the office of tax commissioner.

Signature and Title: *W.D. Sanders*
Tax Commissioner

Date January 12th, 1923.

APPROVED:

General Superintendent.	Prin. Asst. Engr. or Engr. Maint. of Way.	Assistant General Manager.
Mech. Supt., Supt. Teigh. or Signal Engr.		
Chief Engineer.	General Manager.	Vice President.
<i>[Signature]</i>	<i>Charles Smalley</i>	Date of Final Approval } 1 26 23 19
General Auditor or Comptroller.	President.	

COMPTROLLER'S RECORD OF NOTICE OF APPROVAL AND OF COMPLETION

Form No. 1345 issued **JAN 29 1923** 19 Work begun 19 Work finished 19

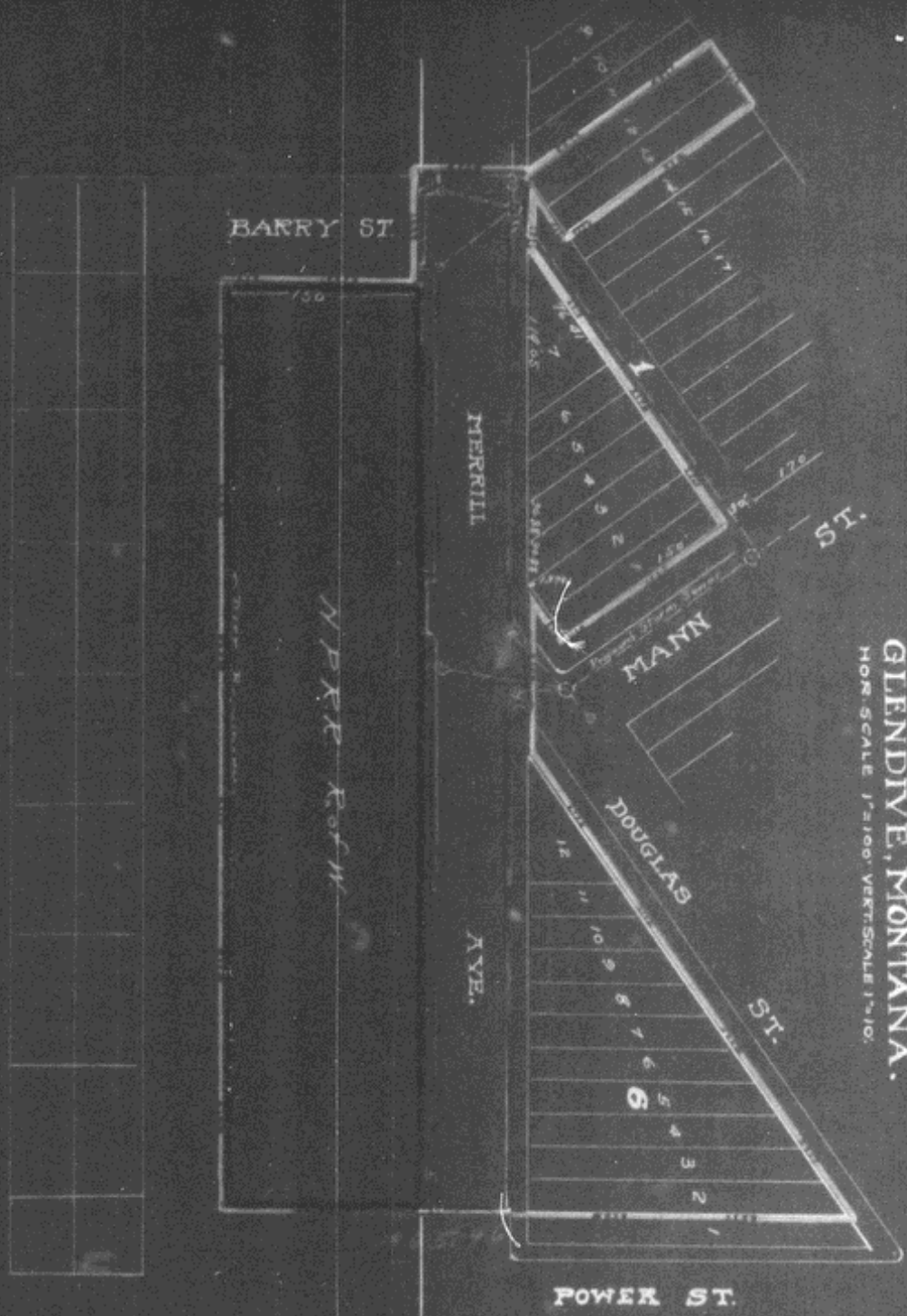
Checked as to property description of J. Watson 1/12/23

Checked and Entered President's Office

IMPROVEMENT DISTRICT No. 4

GLENDIVE, MONTANA.

HOR. SCALE 1"=100'. VERT. SCALE 1"=10'.



Special Improvement District #4 shown: ————
 Reinforced concrete pavement shown: ————
 N. P. Ry. Co. R/W assessed shown: ————

OFFICE OF
 RICHARDE
 STEVENS
 GLENDIVE, MONT.
 4-1-22