

NORTHERN PACIFIC RAILWAY COMPANY
AUTHORITY FOR EXPENDITURE

Year: 1922

Superintendent's No. 90
No.

Dept. No. Engineering Dept. No. 1

A. F. E. No. 35

St. Paul, Div. L. F. & D., District State Minn., Branch Val. Sec. No. 11

AUTHORITY IS REQUESTED FOR A NET EXPENDITURE OF \$ 483.

Accounting distribution as follows: (Distribution to be made in General Office.)

	Operating Expenses	Profit and Loss	Net Operating Expenses	Net Profit and Loss
Cost of property retired	\$ 762	\$	\$	\$
Value of salvage		563		
Incidental costs				199
Total to Operating Expenses				68
Total to Profit and Loss				\$ 267
To Material and Supplies				563
To Bills for Collection				
To Other Accounts				
Net charge to investment account—Additions and Betterments				690
Total of distribution				\$ 140



Budget reference: Not in Budget

Class of Work: No. 10

Joint facility contract reference: Not Joint Account

The location is ----- on this company's property. To secure rights, it will be necessary

Location: Glenwood, Minnesota

Title and: Remove west leg of wye track.

Reason: The Northern Pacific Railway Company portion of the west leg of the wye track at Glenwood is 488 feet long and was constructed under Comptroller's A. F. E. 781-01.

The Minneapolis Sault Ste Marie Railway Company have removed their portion of the west wye track. The Northern Pacific portion therefore no longer serves as a wye track and is not required for any other purpose.

In order to avoid further maintenance, it is recommended the track be removed and the material turned over to the Store Department.

CORPORATE

Original cost adjustment

Original Cost Adjustment

Made in AUG 1922

Made in JUL 1922

Checked and Entered President's Office



Work to be done by company force under charge of Superintendent

Accounting to concentrate in the office of Superintendent

Signature and Title:

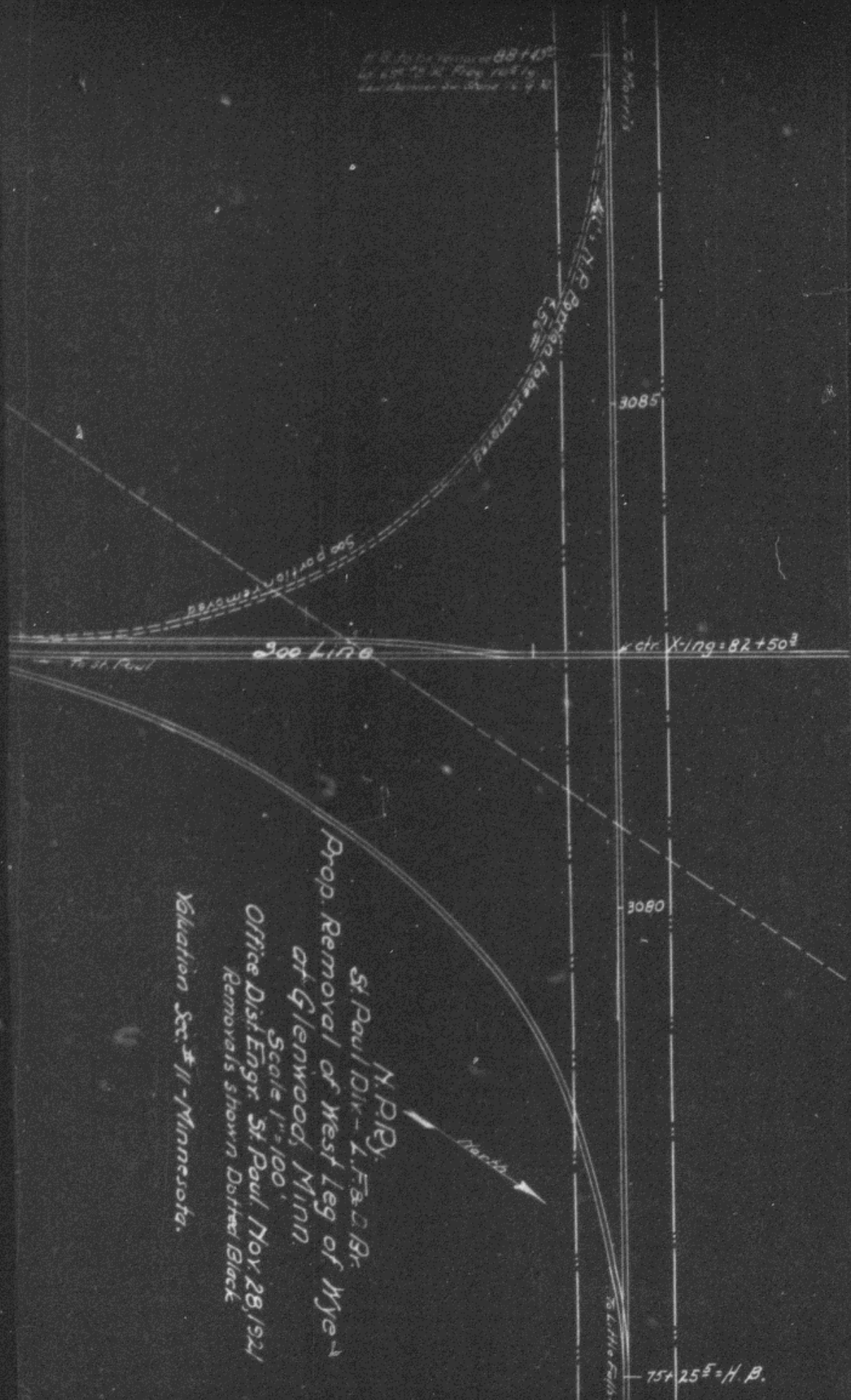
Date December 9th 19 21

APPROVED: <i>[Signature]</i> General Superintendent	<i>[Signature]</i> Asst. Chief Engr. Maint. of Way.	<i>[Signature]</i> Assistant General Manager.
<i>[Signature]</i> Mech. Supt., Supr. Telgr. or Signal Engr.	<i>[Signature]</i> Chief Engineer.	<i>[Signature]</i> Vice President.
<i>[Signature]</i> General Manager	<i>[Signature]</i> President	Date of Final Approval JAN 23 1922

COMPTROLLER'S RECORD OF NOTICE OF APPROVAL AND OF COMPLETION

Form No. 1145 issued JAN 24 1922. Work began 19 Work finished May 26 22

1/2" = 100' (Scale)
88+43.5
40' 0" to 40' 0" (Elev. diff.)
and distance in stationing



N.P.R.Y.
 St. Paul Div. - L.F. & D.B.
 Prop. Removal of West Leg of Nye
 at Glenwood, Minn.
 Scale 1" = 100'
 Office Dist. Engr. St. Paul, Nov. 28, 1924
 Removals shown Dotted Black
 Valuation Sec. # 11 - Minnesota.

3085

ctr. X-179 = 82+50

3080

75+25 = H.B.