

1923

NORTHERN PACIFIC RAILWAY COMPANY

AUTHORITY FOR EXPENDITURE

Year: 1922 **1923**

Superintendent's No. **63-22**
No.

Dept. No. **178 (22)**
Engineering Dept. No.

A. F. E. No. **12**

Seattle Div. **Snoqualmie** District State **Wash** Val. Ser. No. **23**

AUTHORITY IS REQUESTED FOR A NET EXPENDITURE OF \$ **642**

Accounting distribution as follows: (Distribution to be made in General Office.)

	Operating Expenses	Profit and Loss	Net Operating Expenses	Net Profit and Loss
Cost of property retired	\$	\$ 6991	\$	\$
Value of salvage		1146		5845
Incidental costs				504
Total to Operating Expenses				\$
Total to Profit and Loss				6349
To Material and Supplies				1146
To Bills for Collection				
To Other Accounts				
Net charge to investment account—Additions and Betterments				6001
Total of distribution				\$ 504

Budget reference: *Not in Budget*

Class of Work: No. **10**

Joint facility contract reference: *not joint*

The location is _____ on this company's property. To secure rights, it will be necessary

Location: **Issaquah, Wash**
Track decrease **2825.9 feet.**
Title and Reason: **Remove portion of old mine loop track.**

Reason: **A portion of the mine loop track at Issaquah has not been operated since 1909 and with the present arrangement of tracks to mines will not again be required. There is one bridge on this track in a bad state of decay and it is desired to salvage the rail before it is washed into the creek.**

APR 1924
Original Cost Adjustment
JUL 1924
Made in President's Office

Work to be done by ~~company force~~ **contract** under charge of **Division Superintendent**

Accounting to concentrate in the office of **Division Superintendent**

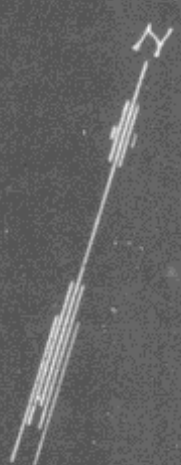
Signature and Title: *[Signature]* **Sup't.** Date **Dec. 2nd 1922**

APPROVED:

<i>[Signature]</i> General Superintendent.	<i>[Signature]</i> Prin. Asst. Engr. or Eng. Master of Works	<i>[Signature]</i> Assistant General Manager.
<i>[Signature]</i> Mech. Supt., Supt. Trench or Signal Engr.	<i>[Signature]</i> Western Traffic Manager	<i>[Signature]</i> J. M. Reynolds
<i>[Signature]</i> Chief Engineer.	<i>[Signature]</i> General Manager.	<i>[Signature]</i> Vice President
<i>[Signature]</i> General Auditor or Comptroller.	<i>[Signature]</i> Charles Smully	Date of Final Approval } 1. 6. 23 19

COMPTROLLER'S RECORD OF NOTICE OF APPROVAL AND OF COMPLETION

Form No. 1345 issued **JAN 1 1923** Work begun _____ 19 _____ Work finished **Feb. 24, 1923**



N.P.R.Y.
 Seattle Div. Snoqualmie Branch
 Wash. Vol. Sec # 23
 sketch showing
 proposed removal of portion
 of old Mine Loop Track
 of
 Issaquah, Wash
 office of Dist. Engr. Seattle, Wt.
 Nov 28 1922.

NB 351+00
 292+81 2 ctr Depot
 To Wenatchville

1002+68.7
 19

To be improved

NB 35+03
 NB 35+274
 Switch Room
 4710 Id 788

2825.9' of Mine Loop Track

NB 1031+276
 47' Road Gage
 Switch Room

60+78 in
 1044 Loop
 To End

To be Removed
 End Br. Switch