

1915

(Form 1363)

REQUISITION FOR AUTHORITY FOR EXPENDITURE

132 470  
14 2 994

Applicant No. 1 (1915) Eng. Dept. No. 11 (1915) Comptroller's No. 5  
On Pasco Div'n of Operating Dept. State of Wash Val. Sec. No. 20

Authority is requested for an expenditure of \$ 347.00 chargeable approximately as follows: (Distribution to be made in General Office, St. Paul.)

To Optg. Exps. \$ 4.00 To Adms. and Betts. \$ 330.00 To ... \$ 13.00

For new work At Sunnyside Branch 3/4 Mi East Grandview arch.

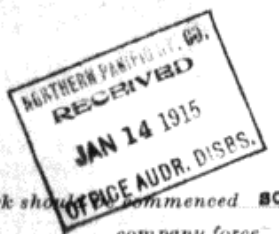
Consisting of Install crossing bell



The location is on this company's property and is not joint territory. To secure required rights it will be necessary.

*Original ready Jan. 1916 up to 18156  
ready April 1917 up to 18156*  
If required by Accounting Department, detailed estimate will be furnished promptly after approval. The expenditure is recommended for the following reasons: (if space is not sufficient continue on back.)

The Road Crossing three fourth mile east of Grandview crosses our track in a cut so that the view of approaching trains is obstructed. About a year ago an automobile was struck on this crossing account driver being unable to see train approaching and the engine crew not seeing the auto until it was on the track. In order to prevent future accidents, alarm bell should be sounded so that parties using the crossing will be warned of approaching trains.



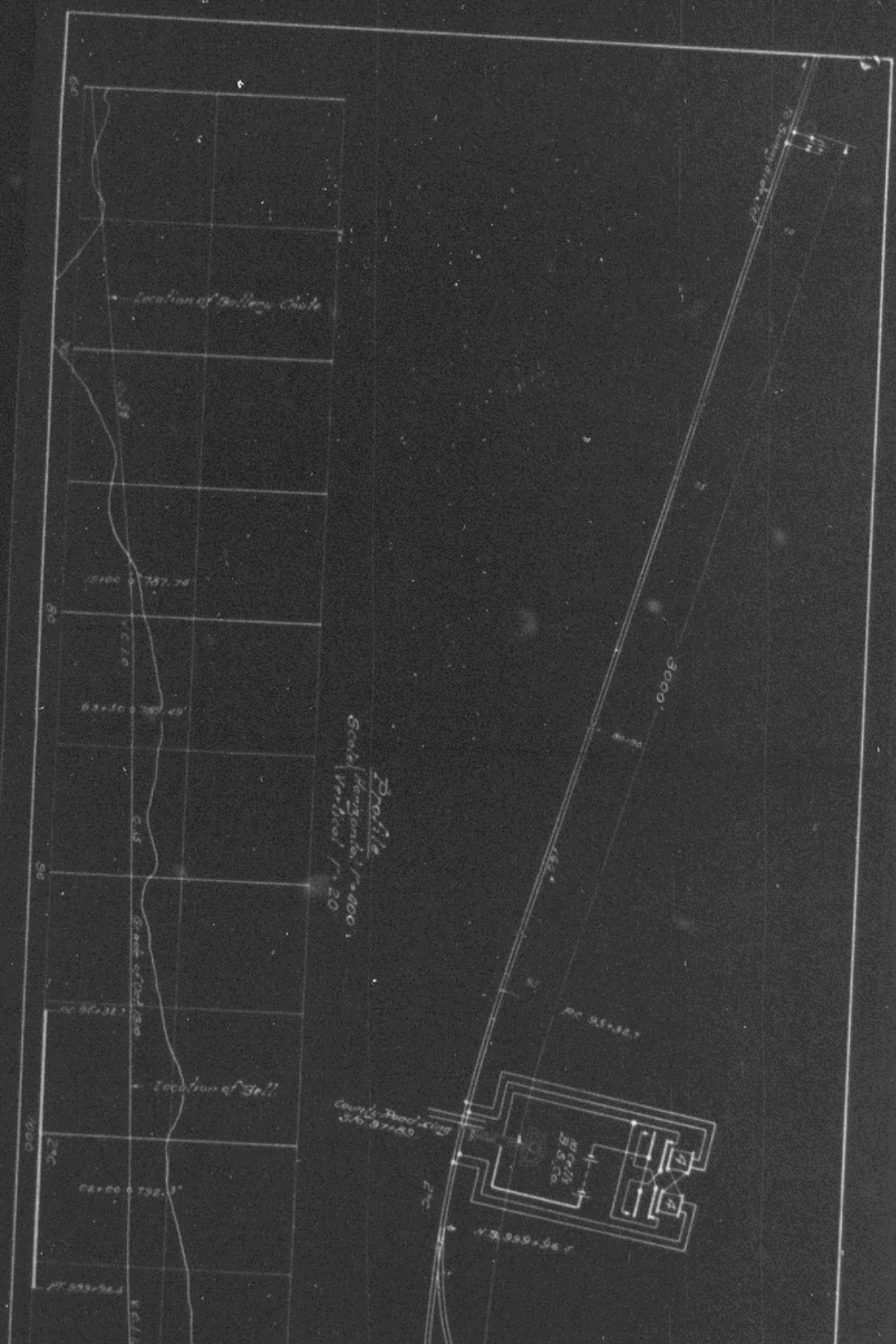
Work should ~~be~~ commenced soon as approved in order to complete by Signal Supervisor and be done by ~~company force~~ under charge of

Signature and Title of Applicant: W. D. ... Superintendent Date of Requisition: Dec. 30th 1914

APPROVED By: [Signatures]  
Genl. Supt. Engr. M. of W. Chief Engr. M. of W.  
Chief Engr., Mech. Supt. or Supt. Telg. General Manager.  
Third Vice President. Second Vice President.  
Comptroller. President. Date of Final Approval: 1915

COMPTROLLER'S RECORD OF NOTICE OF APPROVAL AND OF COMPLETION

Form 1345 issued 1-16 1915 Work begun 1915 Work finished 1915



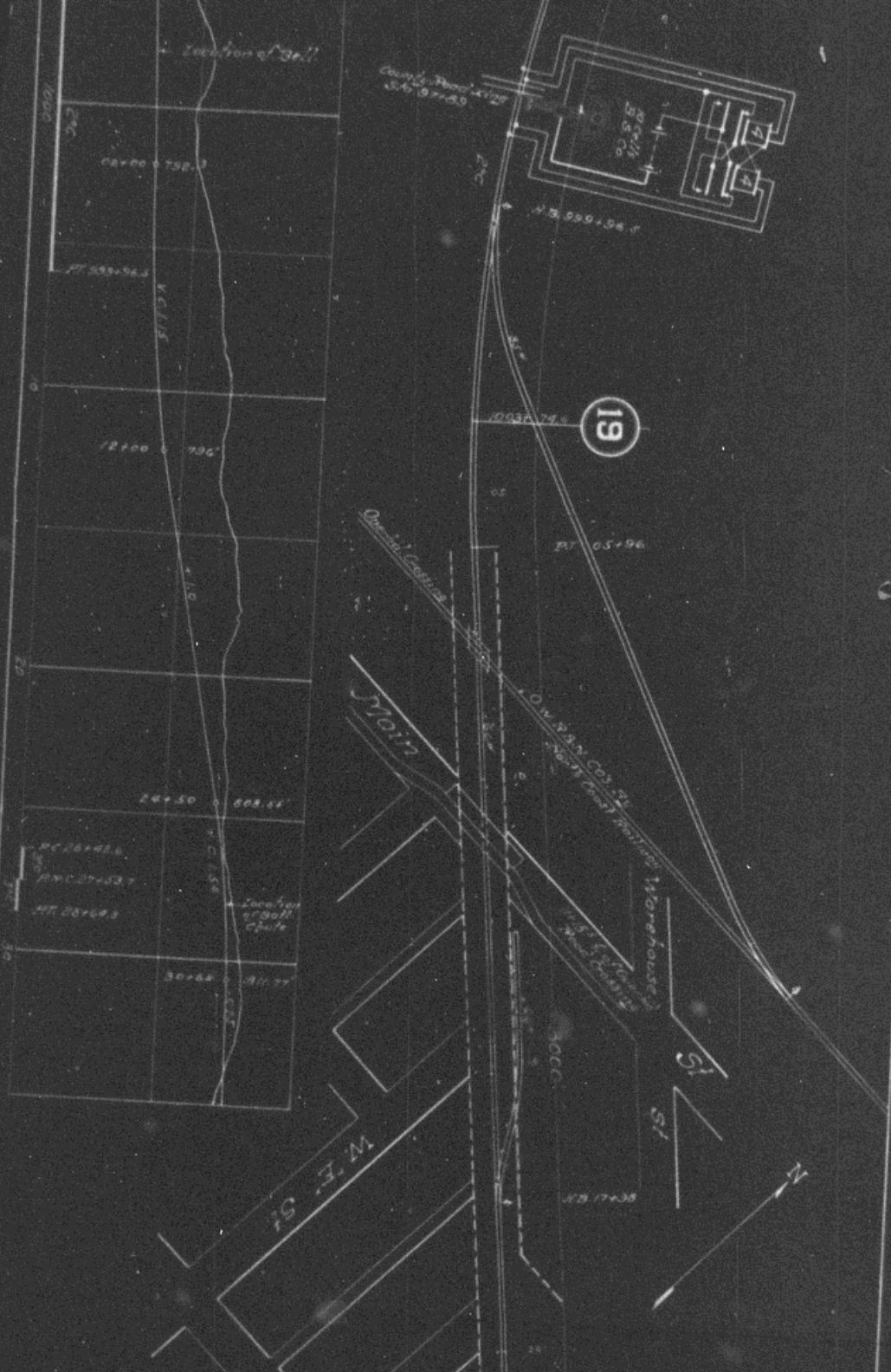
Profile  
 Scale Horizontal 1"=100'  
 Vertical 1"=20'

Location of Baller's Gate

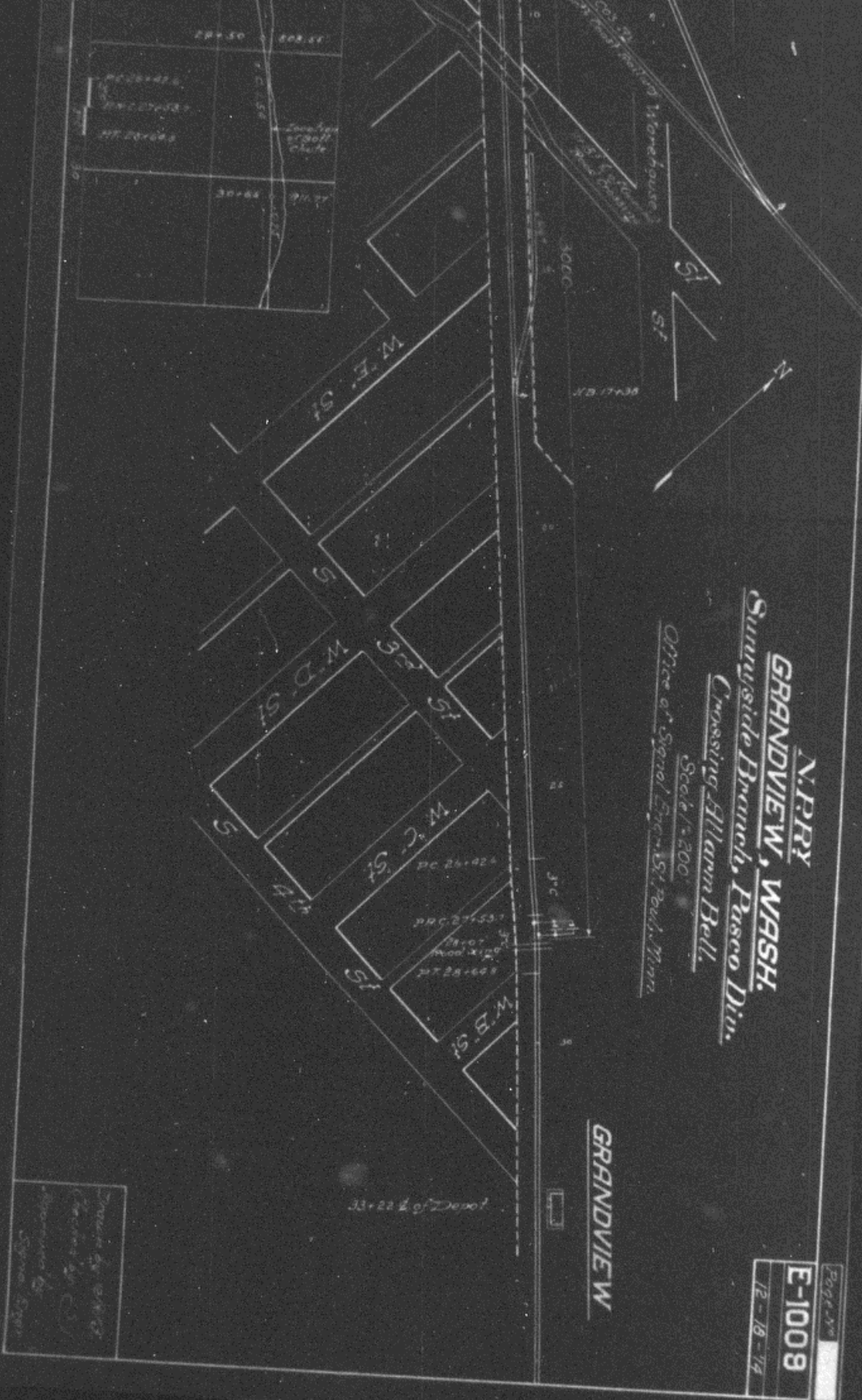
Location of Bell

County Road  
 346.97+00

80'x75'  
 85'x75'



**N.P.R.Y.**  
**GRANDVIEW, WASCO**  
*Sunnyside Branch, Phase*  
*Crossing Hillman Bell*  
 Office of Special Engineer, St. Paul, Minn.  
 Scale 1" = 200'



Page No  
**E-1009**  
 12-10-74

**N.P.R.Y.**  
**GRANDVIEW, WASH.**  
*Sunnyside Branch, Pasco Div.*  
*Crossing Allam Bldg.*  
 Scale 1/4" = 200'  
 Office of Signal Eng. St. Paul, Minn.

**GRANDVIEW**

Drawn by G.W.C.  
 Checked by G.S.  
 Approved by  
 Signal Eng.

33+22 E of Depot

DC 24-024  
 DC 27-537  
 28-07  
 29-12  
 30-12  
 31-12