



R. F. A. No. 136

E. D. No. 134(1910)

AUTHORITY FOR EXPENDITURE.

Requisition dated December 20, 1910.

Comptroller's No. 8-1911

From Lake Superior Division Operating Department.

For Sawyer, Minnesota; extending loading track. Track increase -- 600 feet.

Amount, \$ 491.00

REMARKS AND RECOMMENDATIONS.

Work to be done by Division forces.

- Not in budget -

Operating Expenses	-	\$	
Additions and Betterments	Acct. No. A-13	\$	491.00
	" "	\$	
	" "	\$	
Material and Supplies	-	\$	

*W. J. Perkins*  
Engineer Maintenance of Way

*W. J. Smith*  
Chief Engineer of Maintenance of Way

*W. J. [Signature]*  
Chief Engr., Mech. Supt. or Supt. Telegraph.  
General Manager.

Third Vice-President.

Second Vice-President.

DISTRIBUTION OF CHARGES.

Operating Expenses		\$	
Additions and Betterments	a/c 13		491.-
Material and Supplies			
Rail Renewal Fund			
		Total, \$	

NOTED  
JAN 6 1911  
OFFICE AFTER DISBS.

Approved JAN 5 - 1911

*H. A. Gray*  
Comptroller

*Samuel Elliott*  
President

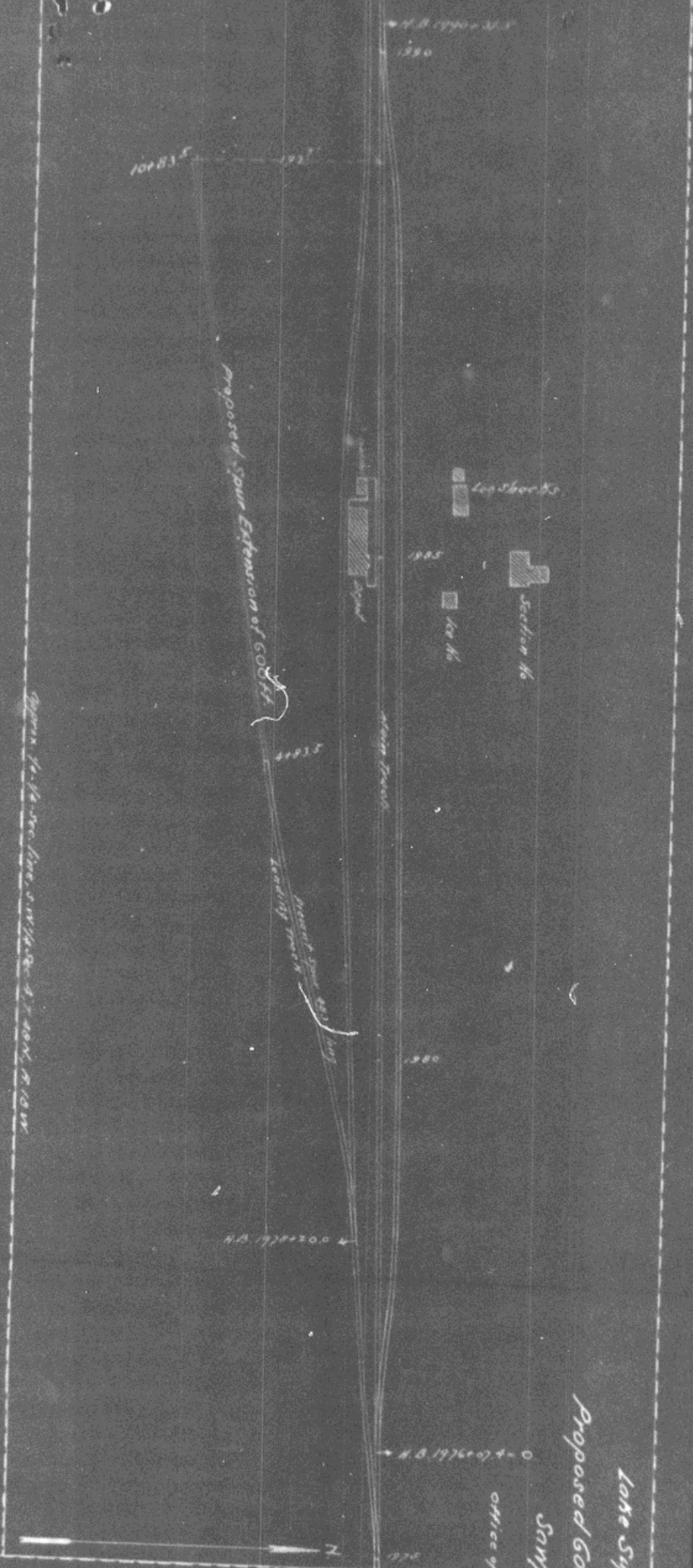
COMPTROLLER'S RECORD OF NOTICE OF APPROVAL AND OF COMPLETION.

Form 1845 issued JAN 9 1911 191

Work commenced

191

Work Completed



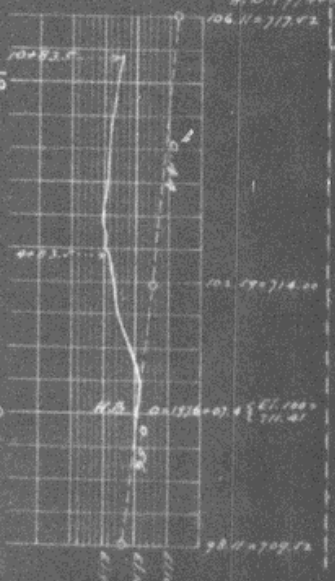
Spurs full-scale line with 2.5 ton cars

N.P.R.  
 Lake Superior Div. - Second District  
 Sketch showing  
 Proposed 600 ft. Extension of Loading Tract  
 of  
 Sanyer, Carlton Co., Minn.

Office of Division Engineers, St. Paul, Dec. 12, 1908  
 Proposed Extension in red



Proposed 600 ft. Extension of 600 ft. Loading Tract



Profile Grade: Max. Rise = 600 ft.  
 Ground Line: Min. Rise = 20 ft.  
 Proposed Grade: Max. Rise = 20 ft.  
 Ground Line: Min. Rise = 20 ft.

100+00