



RFA No. 50

7-1132

AUTHORITY FOR EXPENDITURE.

F. D. No. 4
Form 1305-A
(Revised 12-30-06)

Requisition dated December 16,

1908

Comptroller's No. 21

From

Pasco

Division

Operating

Department.

For Pasco, Washington, portable depot.

Amount, \$ 259.00

REMARKS AND RECOMMENDATIONS.

Northern Pacific Railway to stand entire expense. Work to be done by Division Forces.

A. R. Koch
Engineer, Maintenance of Way

[Signature]
Chief Engineer, Maintenance of Way, Telford

[Signature]
Sd. Second Vice President.

[Signature]
General Manager.

DISTRIBUTION OF CHARGES.

Operating Expenses

Improvements, Betterments and Additions

\$ 259.00

Total \$

[Signature]
Comptroller

NORTHERN PACIFIC RY. CO.,
RECEIVED
FEB 4 1909
OFFICE AUDR. DIV'NS.

INSTRUCTIONS AND APPROVAL.

Approved Jan. 29 1909

[Signature]
President.

COMPTROLLER'S RECORD OF NOTICE OF APPROVAL AND OF COMPLETION.

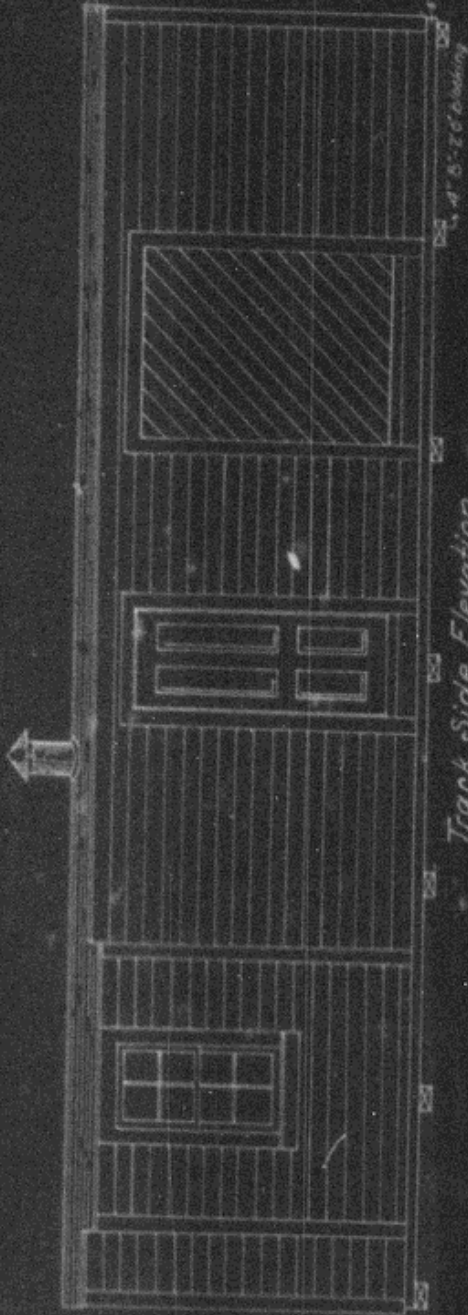
Form 1345 issued FEB 5 1909 190

Work commenced

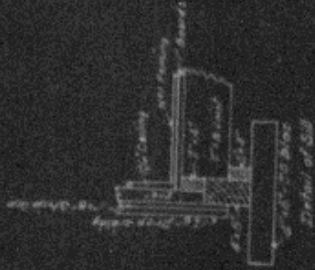
190 Work completed

190

Roof
Painted Granite Red
1/2" Board
1 1/2" rafters at 24"

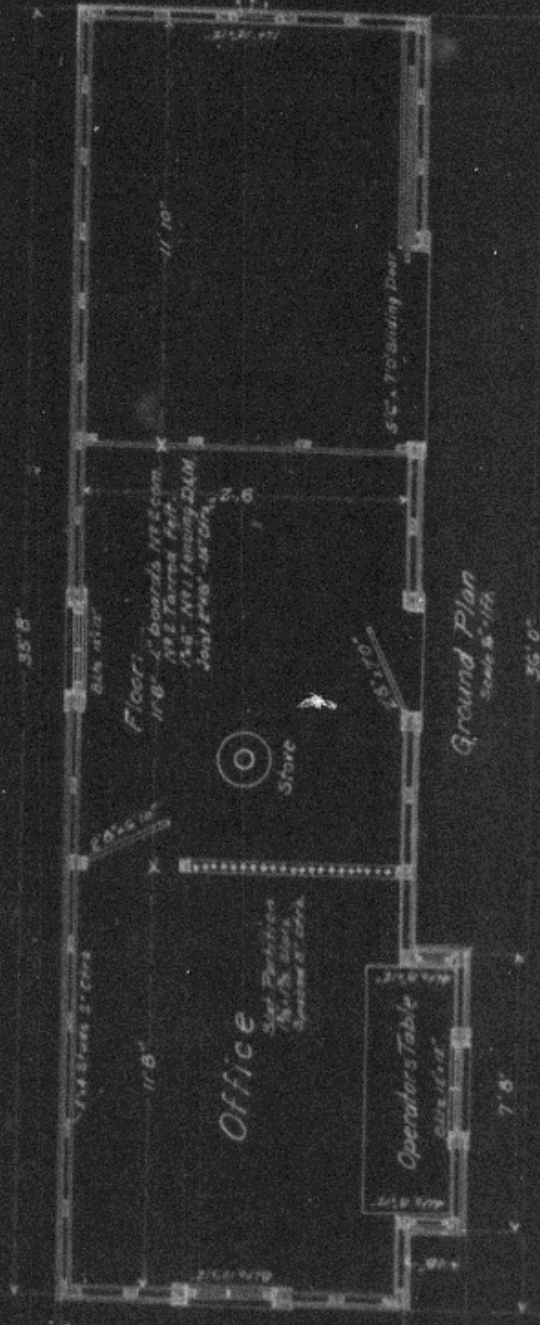


Track Side Elevation



N.P.R.
Passo Div. 1st Dist.
Plan of Proposed Portable Depot
To be stored at
Passo Mn.
Passo Mn.

Plan dated Office Chief Engr. St. Paul
Oct. 10th, 1908
Office Div. Engr. Spokane Mn.
Dec. 5th, 1908



Ground Plan
Scale 8" = 1 ft.

Office

Operator's Table
6' 0" x 10' 0"

Floor:
11' 6" 1/2" boards 17' 2" com.
1 1/2" boards 14' 2" com.
1 1/2" AT, Flooring 24" O.
10' 11" 2" 1/2" AT O.R.

Store

55' Boarding door

1 1/2" Ship lap
1 1/2" Torred 1st
1 1/2" Drop siding