



19-1906
AUTHORITY FOR EXPENDITURE

Form (Revised) 12
550 19

Requisition dated December 6th, 1905 Comptroller's No. 550 19
From Pacific Division Operating Department

For NEAF KIMA, Wash: extend spur 600 feet at Vance's Lumber mill.

Amount \$ 314.00

REMARKS AND RECOMMENDATIONS.

The Railway Company to furnish metal only.
The Vance Lumber Co., to assume the balance of the expense,
do grading and furnish easement.
Work to be done by Division force.

[Signature]
Chief Engineer

Seems to be desirable from both an operating and traffic standpoint. Has my favorable recommendation.

January 27, 1906.

[Signature]
Second Vice President.

Bill 8258-173.03

Taken up under a No 2363-12 as required
re: 7212

[Signature]
General Manager.

DISTRIBUTION OF CHARGES.

Operating Expenses \$
Bills of Materials \$ 314.00
Total \$

[Signature]
Comptroller.

RECEIVED
FEB 12 1906
OFFICE AUDR. DISBS.

INSTRUCTIONS AND APPROVAL.

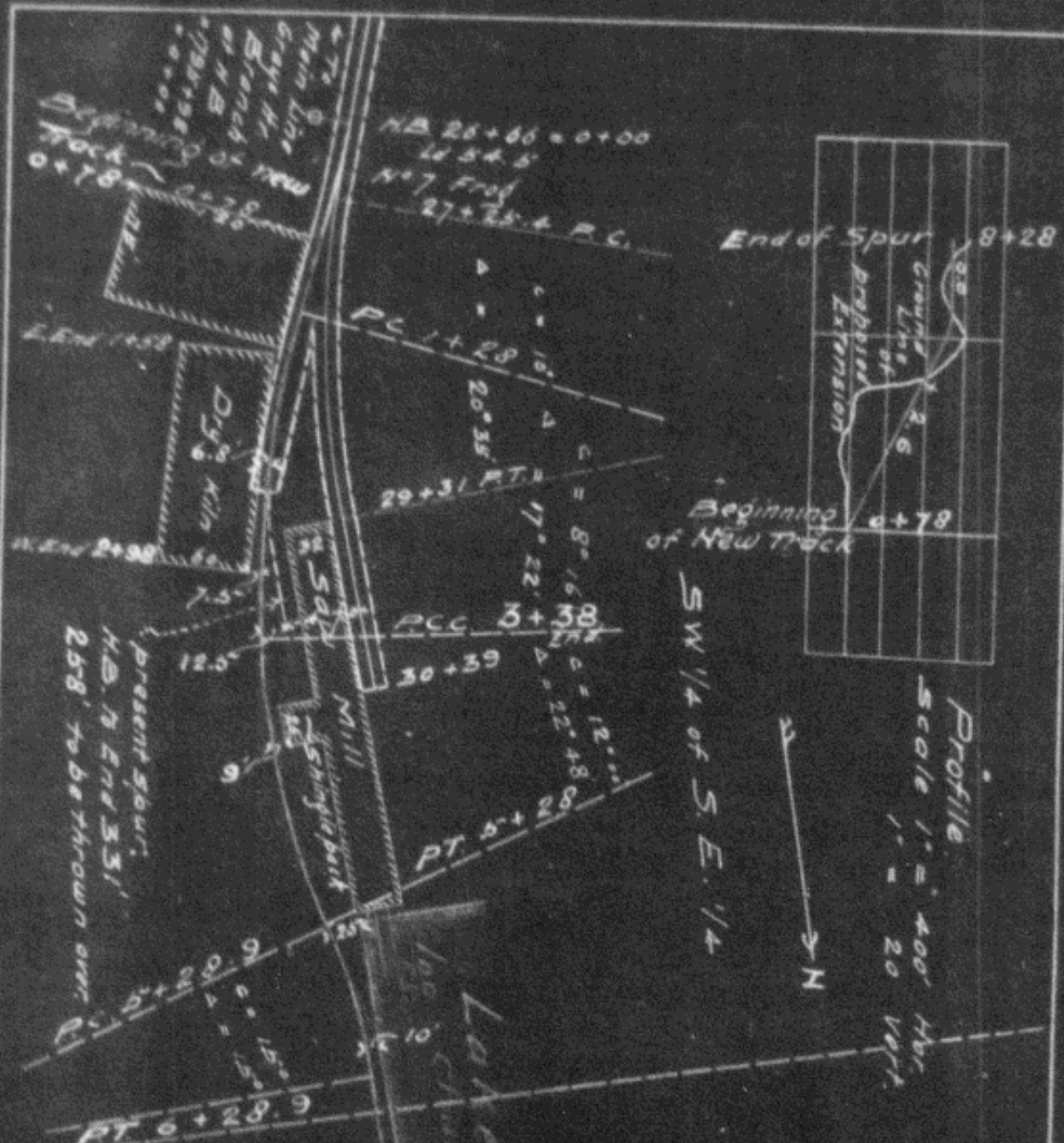
Approved February 10, 1906 190

[Signature]
President.

COMPTROLLER'S RECORD OF NOTICE OF APPROVAL AND OF COMPLETION.

Form 1345 issued FEB 12 1906 190

Work commenced 190 Work completed 190



Profile
 Scale 1" = 400' Hor
 1" = 20' Vert

SW 1/4 of S.E. 1/4

NW 1/4 of S.E. 1/4

End of Spur 8+28

E 6029

N.P.R.
 Pac. Div. Gray's Harbor Br.
 Elmo
 Vance Spur
 Near Mile Post 34.
 Sec. 28, T. 18 N., R. 6 W., N.M.
 Sketch showing
 Proposed Extension of Spur
 Vance Lumber Co.
 Office of Dir. Engr. Tacoma, Wash.
 Dec 12, 1905
 Scale 1" = 100'