



AUTHORITY FOR EXPENDITURE

S. D. No. 2

Form 1345  
(Revised 12-1-05)

Acquisition dated **November 24, 1905** Comptroller's No. ~~XXXXXX~~ 9

From **Seattle** Division **Operating** Department.

For **Spice:**

**Spur for Standard Railway & Timber Co. 650 ft. long.**

Amount, \$ **407.00**

REMARKS AND RECOMMENDATIONS.

The Railway Company to furnish metal only, the Standard Railway & Timber Co. to assume the balance of expense and furnish easement for that portion of spur off the Right of Way, also do the grading and furnish ties. Work to be done by Division Forces.

*[Signature]*

Chief Engr. ~~XXXXXXXXXXXX~~

This seems like a very large expenditure for a small amount of revenue, but is really only a loan of the metal, and I approve same.

January 9, 1906.

*[Signature]*  
Second Vice President.

*Bill 7038-6865*

*[Signature]*  
General Manager.

DISTRIBUTION OF CHARGES.

Operating Expenses \$ \_\_\_\_\_

Retirements or Additions *407.00*

Total \$ \_\_\_\_\_

*[Signature]*  
Comptroller

INSTRUCTIONS AND APPROVAL.

RECEIVED  
JAN 31 1906  
OFFICE AUDR. DISBS.

Approved January 29, 1906 190

*[Signature]*  
President.

COMPTROLLER'S RECORD OF NOTICE OF APPROVAL AND OF COMPLETION

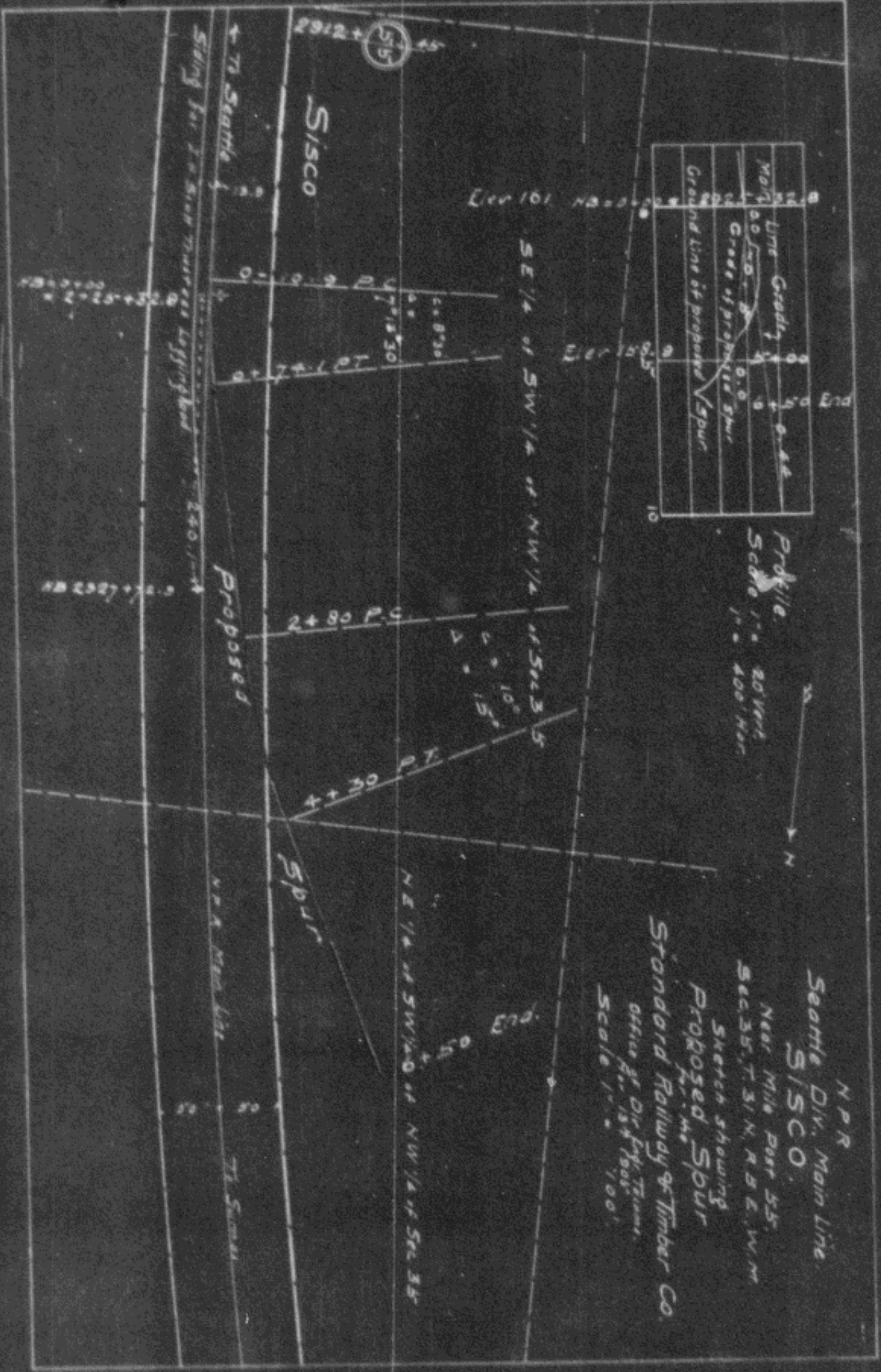
Form 1345 issued FEB 1 1906 190

Work commenced 190 Work completed 190

10	Line	Grade	0.0
9	Line	Grade	0.0
8	Line	Grade	0.0
7	Line	Grade	0.0
6	Line	Grade	0.0
5	Line	Grade	0.0
4	Line	Grade	0.0
3	Line	Grade	0.0
2	Line	Grade	0.0
1	Line	Grade	0.0
0	Line	Grade	0.0

Profile  
Scale 1" = 80 Vert.  
1" = 400 Hor.

N.P.R.  
Seattle Div., Main Line  
SISCO.  
Near Mile Post 55.  
Sec. 35, T. 31 N., R. 3 E., W. 4 M.  
Sketch showing  
Proposed Spur  
Standard Railway & Timber Co.  
Office of Div. Eng. Timber,  
Nov. 13, 1905.  
Scale 1" = 100'



56069

