

AUTHORITY FOR EXPENDITURE

Form 1
(Revised 1905)
6

Acquisition dated Dec. 19, 1905 Comptroller's No. 533

From Pacific Division Operating Department

For near Pacific, M.P. 30+2173 on Peninsular Line.

Spur track 700 feet long for Emerson & Dole.

Amount \$ 441.00

REMARKS AND RECOMMENDATIONS

The Railway Company to furnish metal only, balance of the expense to be assumed by applicants who will also construct trestle, do grading and furnish easement. Track to be laid by Division Forces.

Chief Engr. H. H. ...

Seems to be a commercial necessity in connection with movement of large quantity of timber tributary to proposed spur. I recommend expenditure be approved.

January 26, 1906.

[Signature]
Second Vice President

*Contract No 2161
Contract Sum \$3301*

Bill 7008 - 178.10

[Signature]
General Manager

DISTRIBUTION OF CHARGES

Operating Expenses \$
Improvements, Payments & Additions \$441.00
Total \$

[Signature]
Comptroller

RECEIVED
JAN 1 1906
DR. DISBS.

INSTRUCTIONS AND APPROVAL

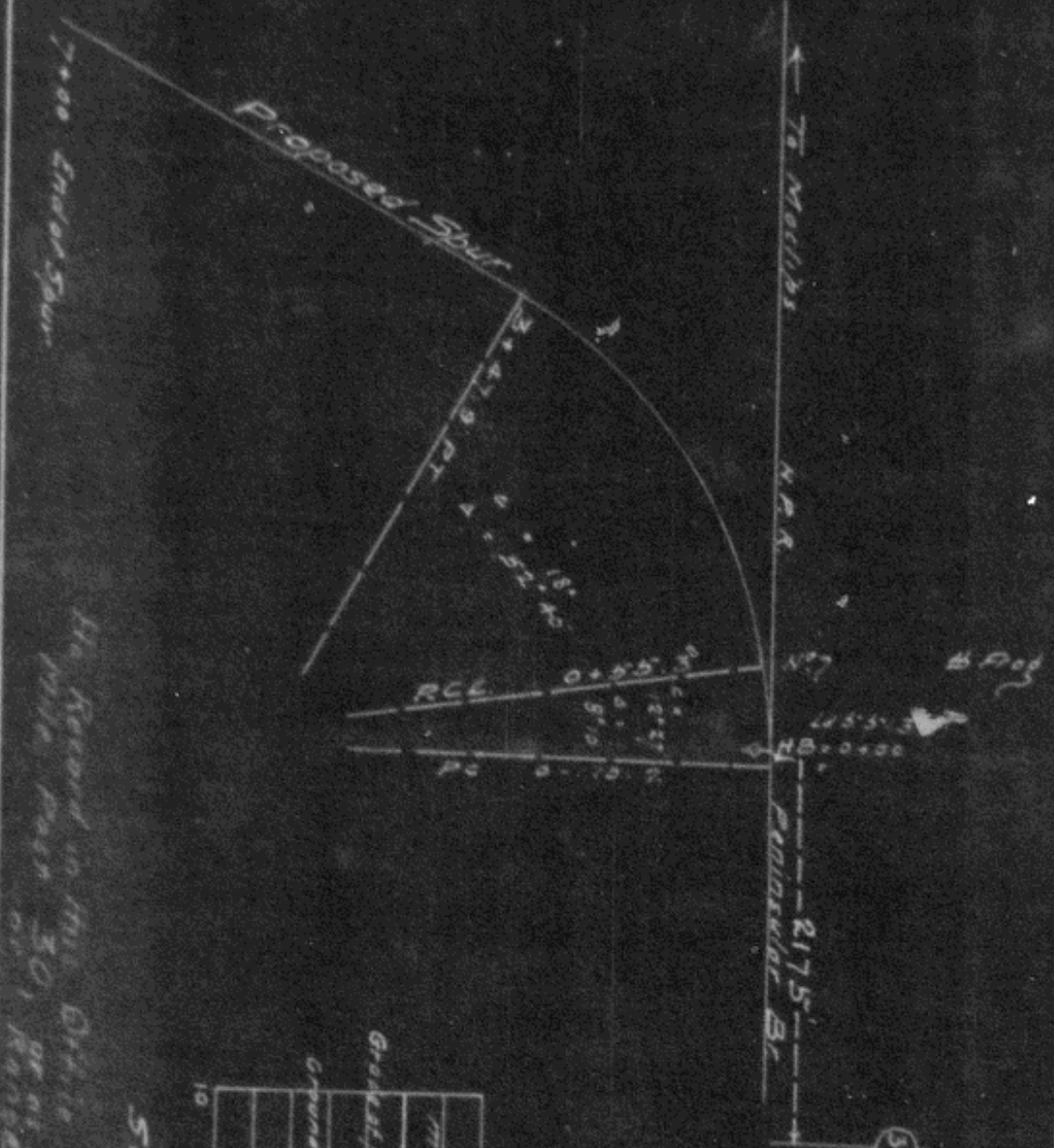
Approved January 29, 1906

[Signature]
President

COMPTROLLER'S RECORD OF NOTICE OF APPROVAL AND OF COMPLETION

Form 1345 issued FEB 1 1906 190

Work commenced 190 Work completed 190



No Record in this Office as to location of
 the mile post 301 on the N.P.R. main line



N.P.R.
 Pac. Div., Peninsular Br.
 Near Mile Post 301.
 Sec. 30
 Sketch showing
 Proposed Spur
 Messrs Emerson & Dole
 Office of Div. Engr.
 Tacoma
 Dec 12th 1905
 Scale 1" = 100'