



1906
AUTHORITY FOR EXPENDITURE

Form 1344
(Revised 1904)

Acquisition dated December 19th 1905

Comptroller's No. 3111 1-06

From Pacific Division Operating Department

For TACOMA, Wash. Extend Tacoma Brick & Tile Co's spur 150' and construct spur track 560' long near Tacoma Smelter for F.H. Goan Co.

Amount, \$ 446.00

REMARKS AND RECOMMENDATIONS

Railway Company to furnish metal only, applicant to assume balance of expense and do grading. Track to be laid by Division forces.

Chief Engr. ~~XXXXXXXXXXXXXXXXXXXX~~

This seems to be a commercial necessity in connection with the Northwestern Improvement Company's business; desirable from standpoint of the Tacoma Brick & Tile Co., and as the railroad company furnishes metal only, I recommend same be approved.

January 26, 1906.

Second Vice President

Ben 9719 - 117.75

Removed under a 7/278 of 1916

General Manager

DISTRIBUTION OF CHARGES

Operating Expenses

Operating Expenses \$ 446.00

Total \$ 446.00

INSTRUCTIONS AND APPROVAL

Approved January 29, 1906 190

President

COMPTROLLER'S BOARD OF NOTICE OF APPROVAL AND OF COMPLETION

Form 1344 issued FEB 1 1906 190

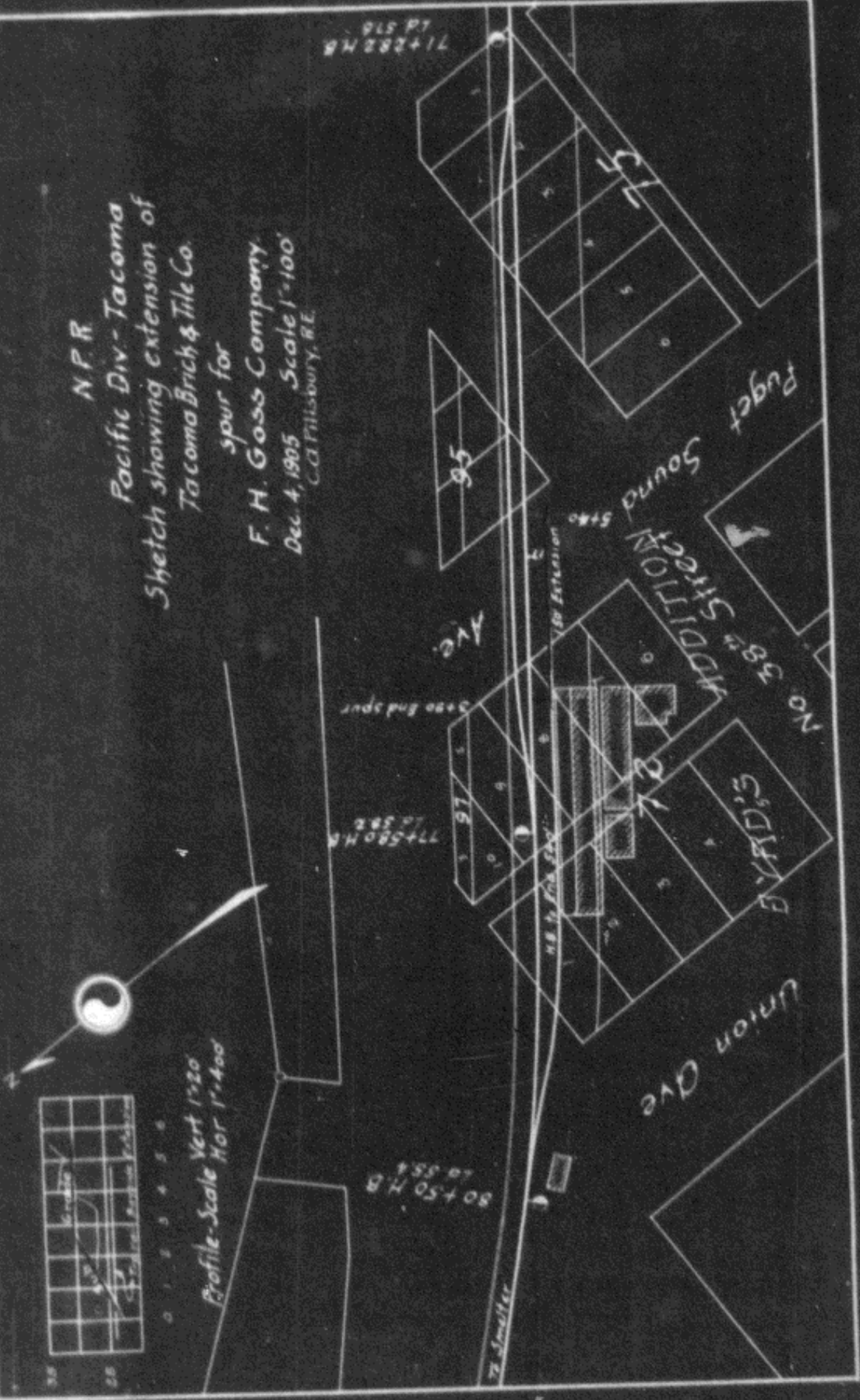
Work commenced 190 Work completed 190

N.P.R.
 Pacific Div. - Tacoma
 Sketch showing extension of
 Tacoma Brick & Tile Co.
 spur for

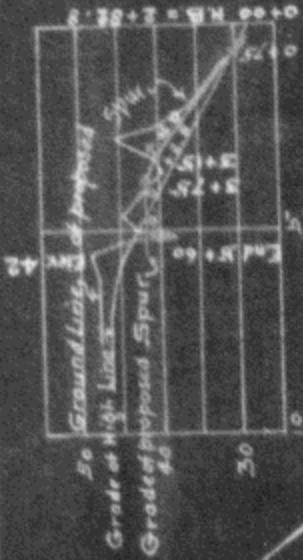
F. H. Goss Company
 Dec. 4, 1905 Scale 1"=100'
 C.A. Pillsbury, R.E.



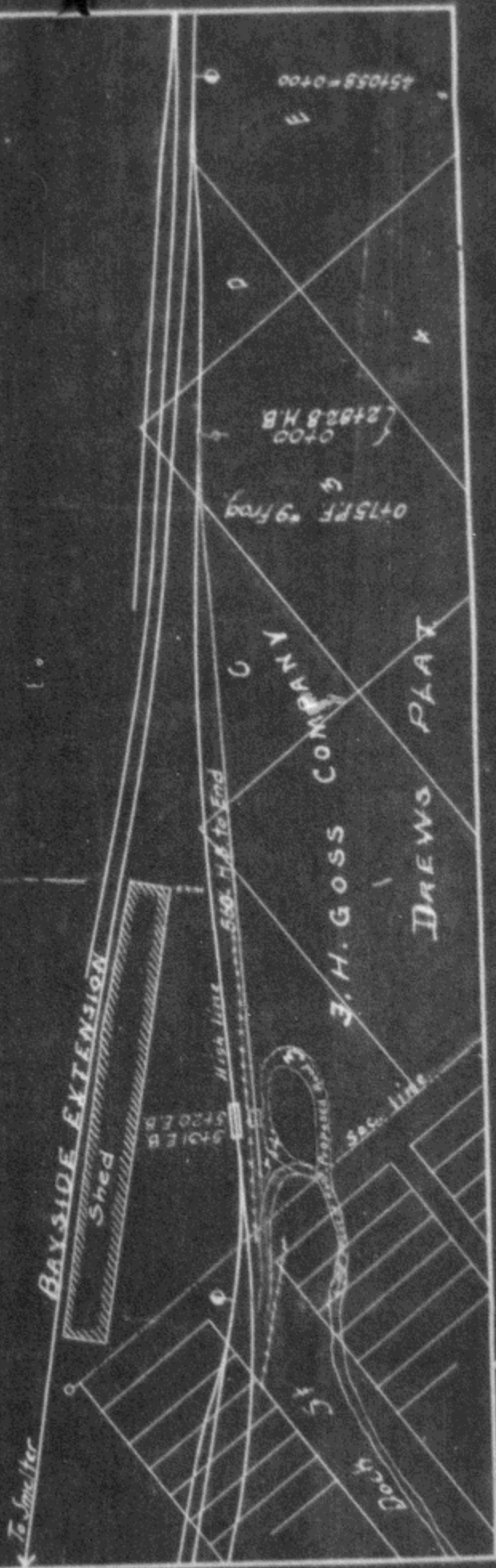
Profile-Scale Vert 1"=20'
 Hor 1"=400'



N.P.R.
 Pacific Div - Tacoma
 Sketch showing proposed spur
 for
 F.H. Goss Company
 Dec. 8, 1905 Scale 1"=100'
 C. Pillsbury, R.E.



SMELTER PROPERTY



251058 = 0+00
 0+00
 24928 H.B.
 0+75 P.F. 9' frog