

6-878  
AUTHORITY FOR EXPENDITUREE. D. No. 1  
Form 1345  
(Revised 11-1-06)Requisition dated December 17th 1906 Comptroller's No. 1  
From Minnesota Division Engineering Department. 107

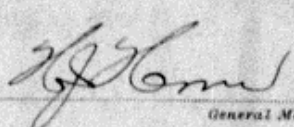
For Staples, Minnesota, ten inch cast iron pipe line for carrying water by gravity from Dower Lake to roundhouse at Staples, a distance of 13,500 feet. Amount, \$ 52,617.00

## REMARKS AND RECOMMENDATIONS.

It will be necessary to acquire additional property.  
Work to be done by Division Forces under supervision of Division Engineer.

  
Chief Engr., ~~W. H. Jones~~ ~~W. H. Jones~~

Second Vice President.

  
General Manager.

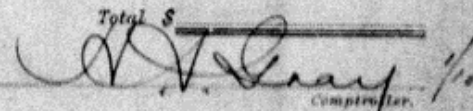
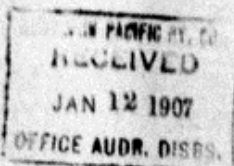
## DISTRIBUTION OF CHARGES.

Operating Expenses

Improvements, Betterments and Additions

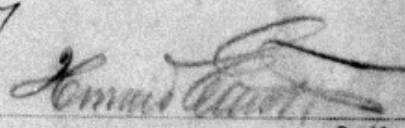
\$ 52,617.00

Total \$

  
Comptroller.

## INSTRUCTIONS AND APPROVAL.

Approved January 11 1907

  
President.

## COMPTROLLER'S RECORD OF NOTICE OF APPROVAL AND OF COMPLETION.

Form 1345 issued JAN 15 1907 190

Work commenced

190

Work completed

190



# REQUISITION FOR AUTHORITY FOR EXPENDITURE.

Form 100-04

St. Paul, Minn., Dec. 17th 1906.

Comptroller's No.

Minnesota

Division Engineering

Department

Applicant's No.

Authority is requested for an expenditure as per detailed estimate attached of \$32,817.00 for ~~new work~~ <sup>additions</sup> ~~maintenance~~ at Staples, Minnesota consisting of 10-inch cast iron pipe line for carrying water by gravity from Dower Lake to roundhouse at Staples, a distance of 13,500 feet.

The location is shown by plan attached, ~~sketch on back~~ <sup>partly on</sup> and is ~~not on~~ <sup>partly on</sup> this company's property. To secure required rights, it will be necessary to purchase additional property.

Charges are to be made against

for

as per

The expenditure is recommended for the following reasons: To provide an adequate water supply. The present supply is secured by seepage into three large wells. During the maximum movement of traffic this supply has frequently become entirely exhausted. The flow is now showing signs of complete exhaustion, making it imperative to obtain a supply from other sources.

Five months will be required for construction, which should be commenced at once in order to complete by May 1st, 1907.

and be done by Company forces,

under charge of Division Engineer.

Dec. 17th, 1906 (Title) Div. Engr.

190 (Title)

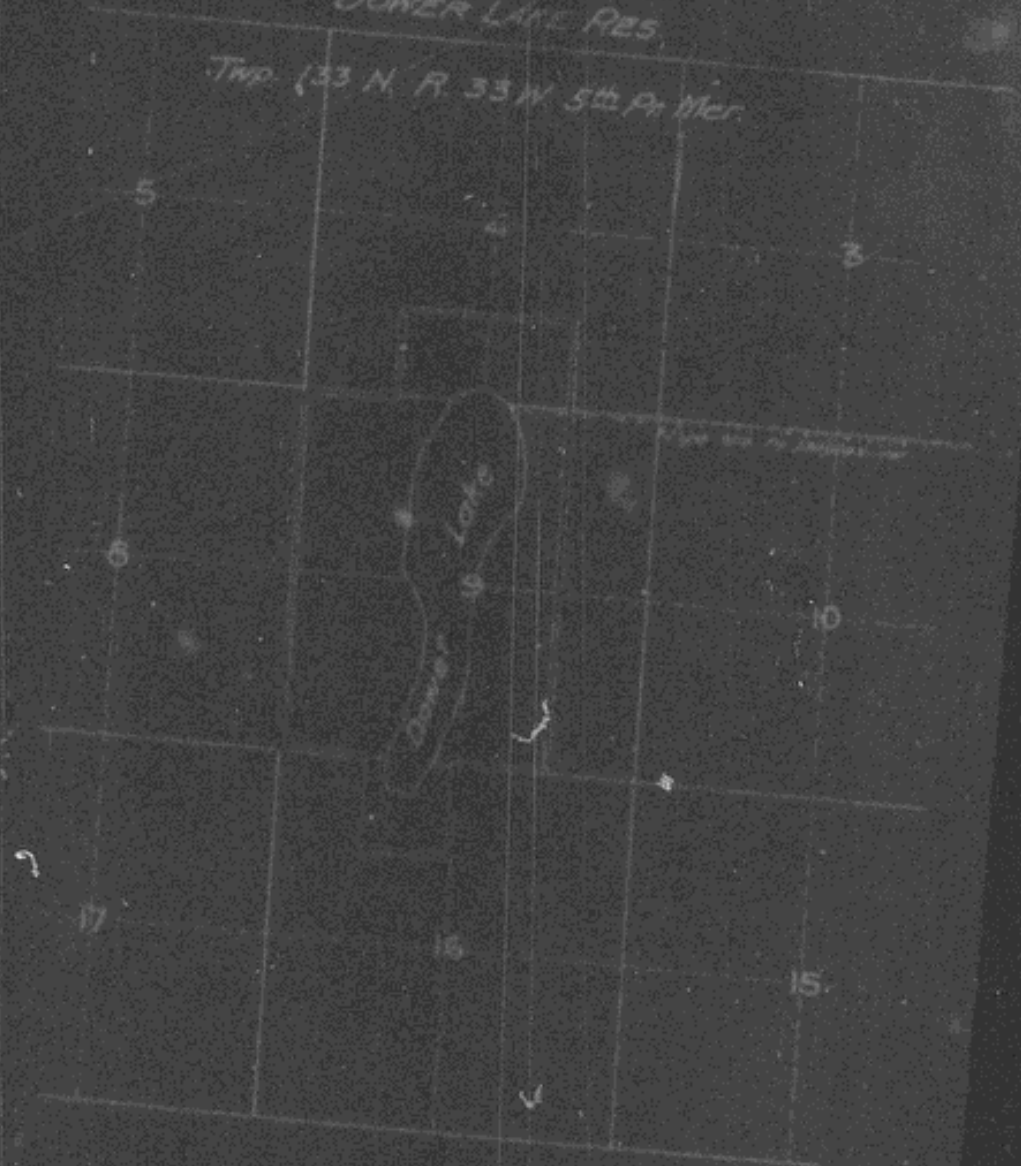
190 (Title)

190 (Title)

SKETCH

N.P.R.  
Plot showing land required  
for  
DOWER LAKE RES.

Twp. 133 N. R. 33 W. 5th P. Mer.



Land to be acquired

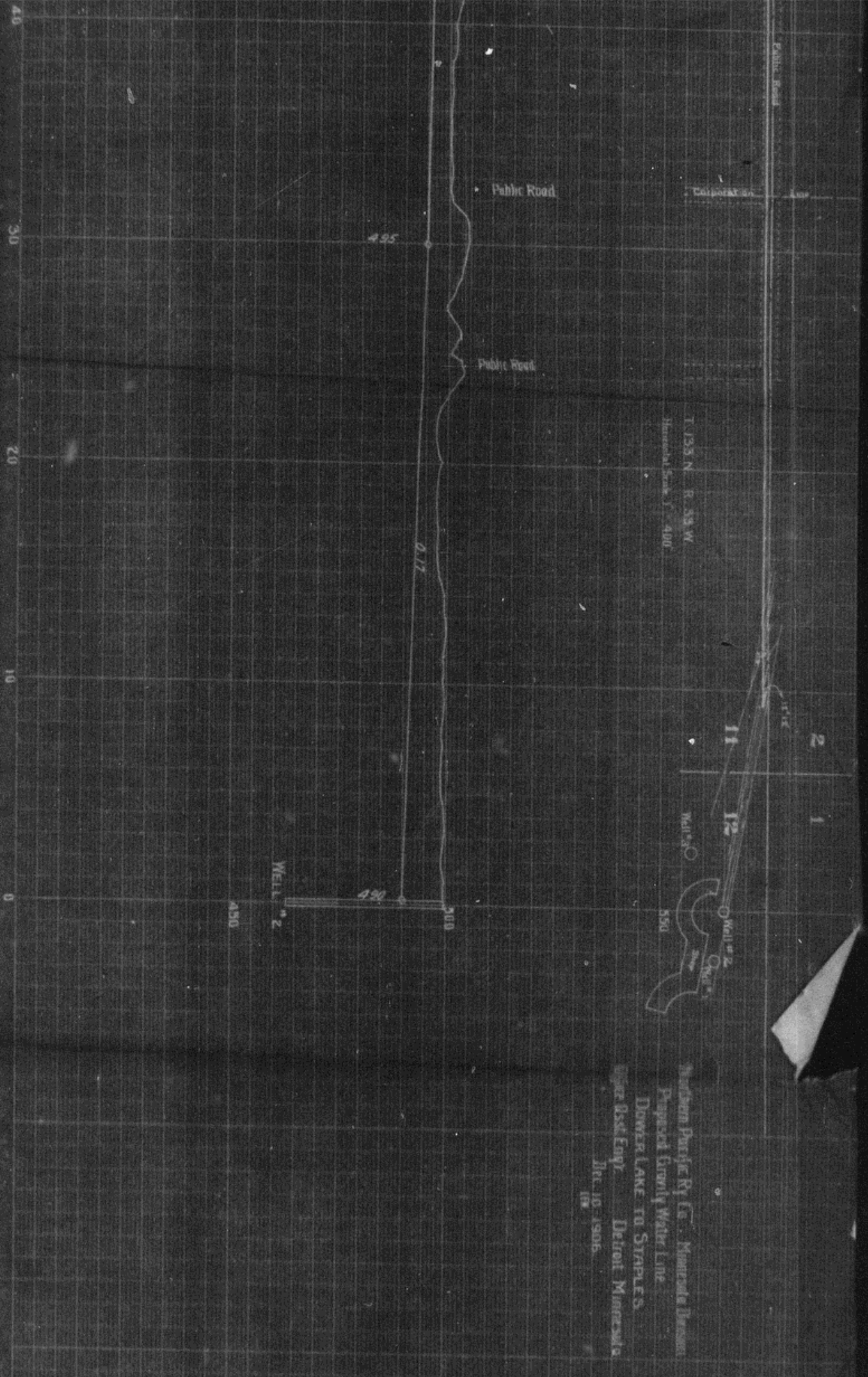


1363RL

1363RL

1363RL

Vertical Scale 1" = 400'



Northern Pacific Ry. Co.  
Proposed line to Staples  
Dowry Lake to Staples  
Detroit, Michigan  
Dec. 15, 1906  
19

1363RL



1363RL

1363RL