

Assembly Instructions

Northern Pacific Wooden Warehouse

Based Precisely on Potato Warehouse at Thrall WA

N3186 HO Scale

Thank you for purchasing this kit. These instructions guide the modeler through the assembly of an authentic NP warehouse, based on the prototype still standing trackside (as of 2023) at Thrall WA.

Prototype Information

There is very limited information about this warehouse. We don't know when it was built, or if it followed any specific NP Standard Plan. We do know that the NP built and operated potato warehouses very similar to this structure across much of the system. This warehouse is very unique, in that it still stands as of 2023.

Prior to 1942, the standard NP paint scheme for structures was Indian Red on the body of the building and Quaker or Bottle green on the windows and trim. In 1942 the Northern Pacific began using a new color scheme on roadway buildings. The entire upper body of the building, including the window sash, was painted a tan color called sand. All the lower part of the building body and doors up to the first-floor window sills were brown. In 1943 they revised this scheme to carry the brown across the doors and up around the door handles. This was done due to the doors being hit with greasy hands and general usage.

Starting in 1963 and beyond the NP began omitting the dark brown and used only the Sand color so that the building could be more easily spray painted.

Use the NPRHA Color Drift Control Cards for reference in finding a proper paint match for these colors.

Tools And Paint

Only a few tools are required to build this kit

- Modelers knife with number 11 and chisel blades
- Tweezers for holding small parts
- Small square or squares to help keep corners square
- Sanding block with sanding paper attached for general cleanup of parts
- Carpenters yellow glue or Aleene's Tacky glue work well
- Canopy glue for clear styrene (Window glazing)
- Tooth picks for applying glue in small amounts
- A straight edge or scale ruler
- Paints of your choice (see below)
- Airbrush or paint brushes
- MINWAX Stain Pens

Construction

Many of the wooden parts have had their part numbers embossed on them to help you identify them. “Peel and Stick” parts have a green 3M printed on the back.

We recommend that you pre paint and stain all parts before assembly beginning construction.

Priming before using color will help hide wood grain and make colors more consistent between the plywood and basswood parts. When the structure is completed use a small paint brush to touchup any missed areas.

Assembly Instructions

Staining

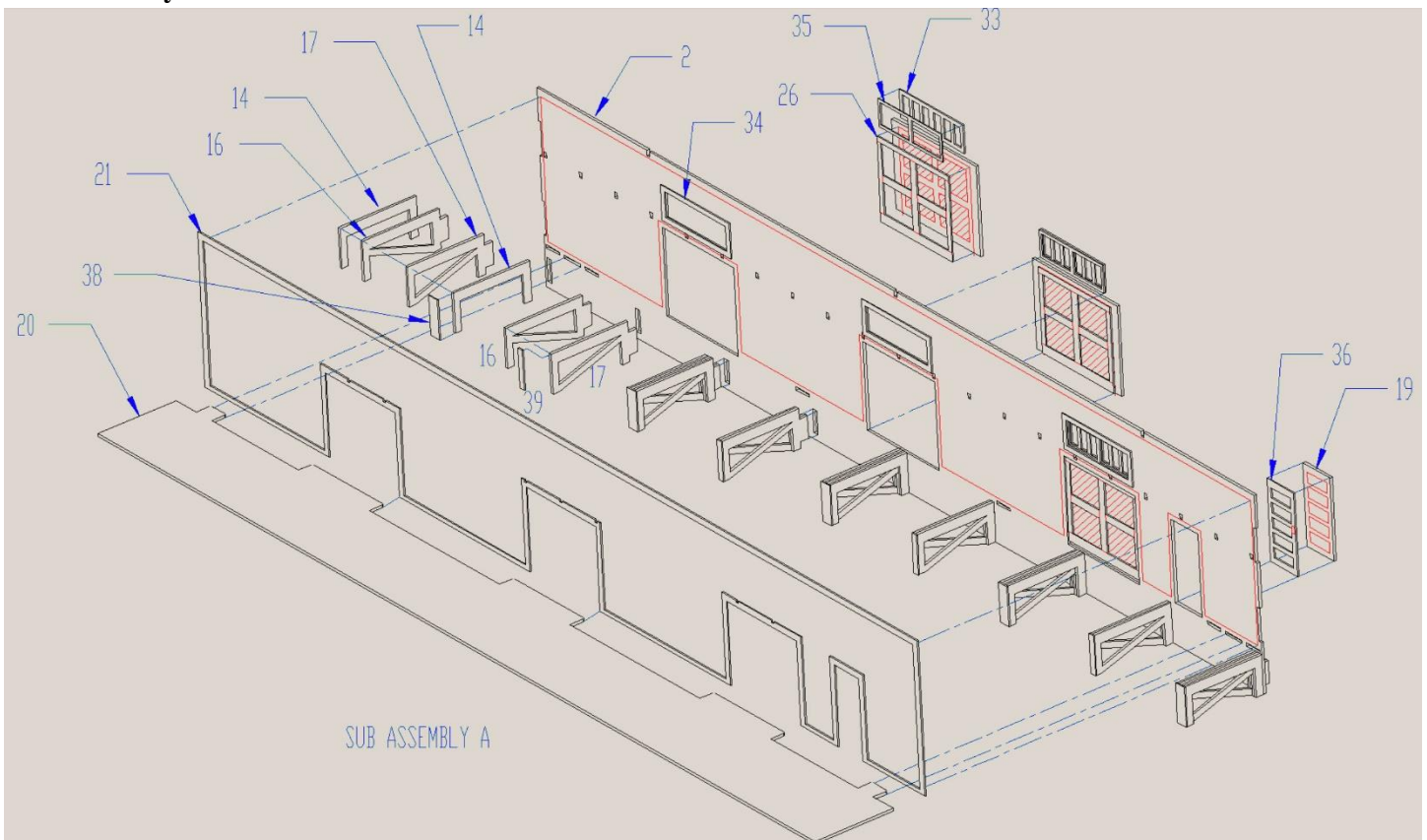
Begin with locating the following parts:

- Main Floor #1
- Dock Floor #20
- Ladder#13
- Floor Supports #14,16,17,38 & 39
- Steps Treds #37 and supports #37

Apply your favorite stain to these parts. We prefer to use small stain pens manufactured by MINWAX. It is recommended to leave the parts on their “sprue tree” if possible, rather than removing them, by doing this it will help to keep parts organized and from becoming lost. Set parts aside to dry.

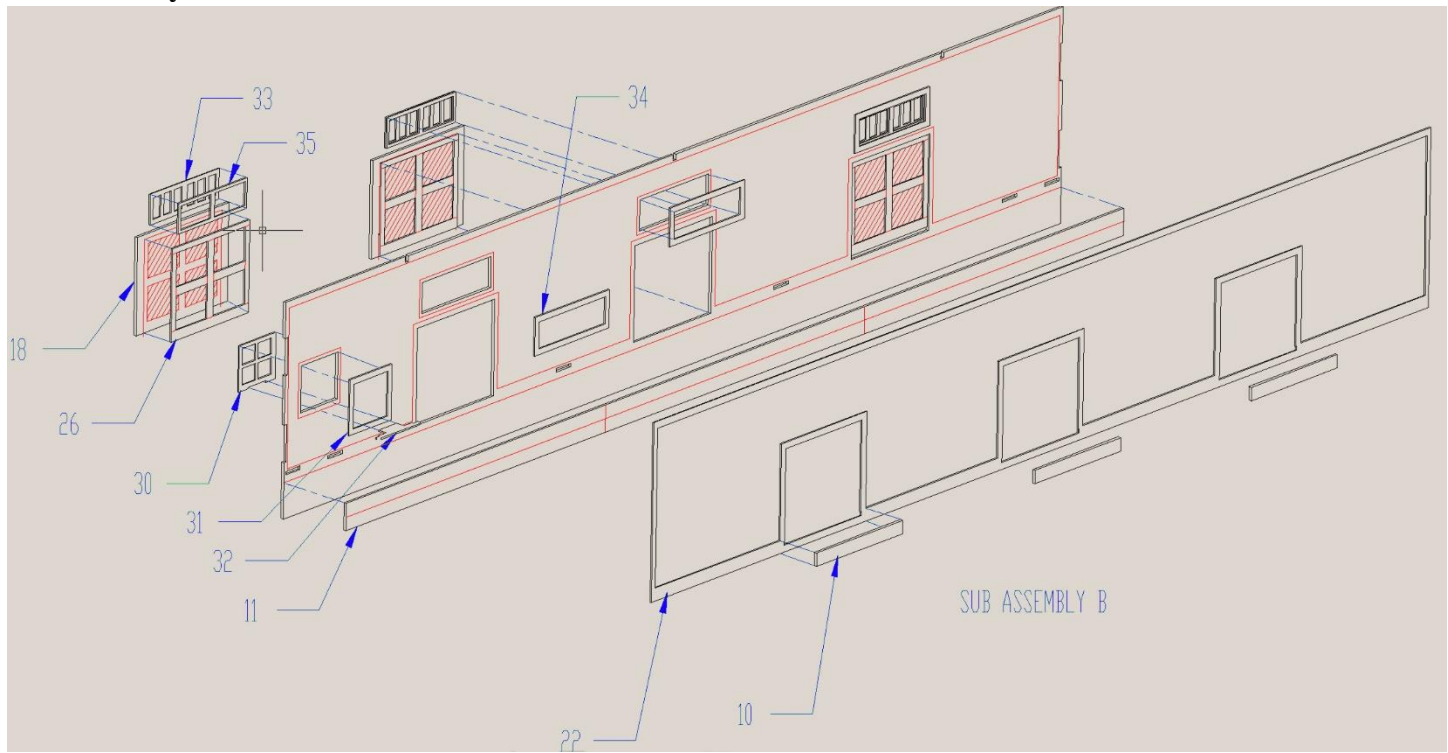
WALLS

Sub Assembly A – Track or Dock Side



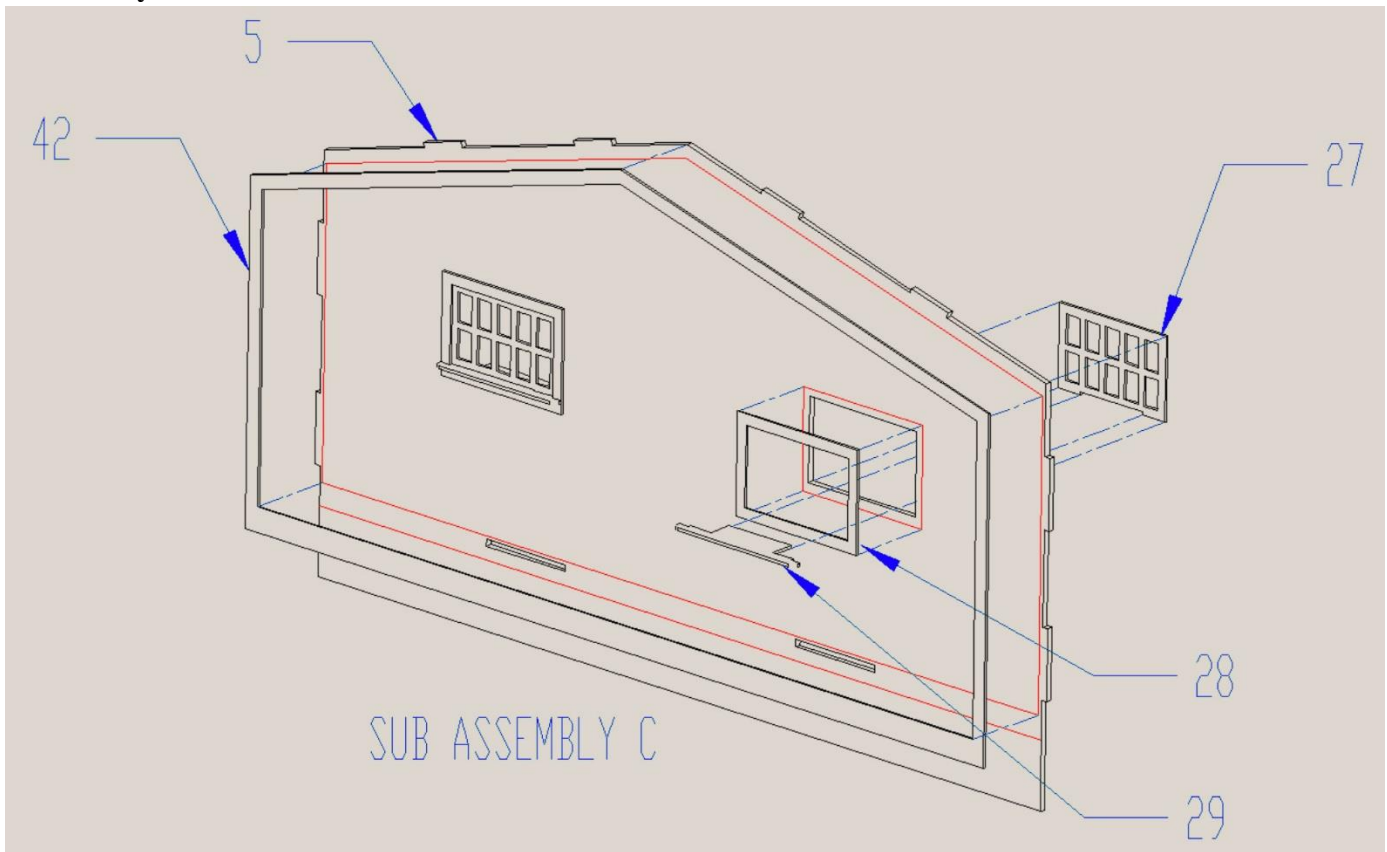
- Main freight doors are a two-part assembly, remove the three freight doors #18 and glue them to the inside of sidewall #2. Making sure to leave a gap at the bottom of the doors for dock floor #20 to slide under. Attach freight door frame #26 to main freight doors on sidewall #2.
- The kit includes clear plastic to represent glass in the windows. The plastic attaches as the inner-most layer of the overall window. Peel the 3M adhesive backing off the wood window and press the clear plastic to the window. The windows are not shown in the Sub Assembly diagram above. Keeping a finger on each side of the window helps to center the plastic.
- Attach overhead window frame #34 to side #2 keep frame centered over opening.
- Attach window frame #35 (locating the adhesive to the inside of warehouse) to frame 34.
- Attach overhead window parts #33 on top of #35.
- Assemble office door by attaching parts #36 to #19, set door aside until final assembly.
- Set sidewall #2 to the side.

Sub Assembly B – Truck or Road Side



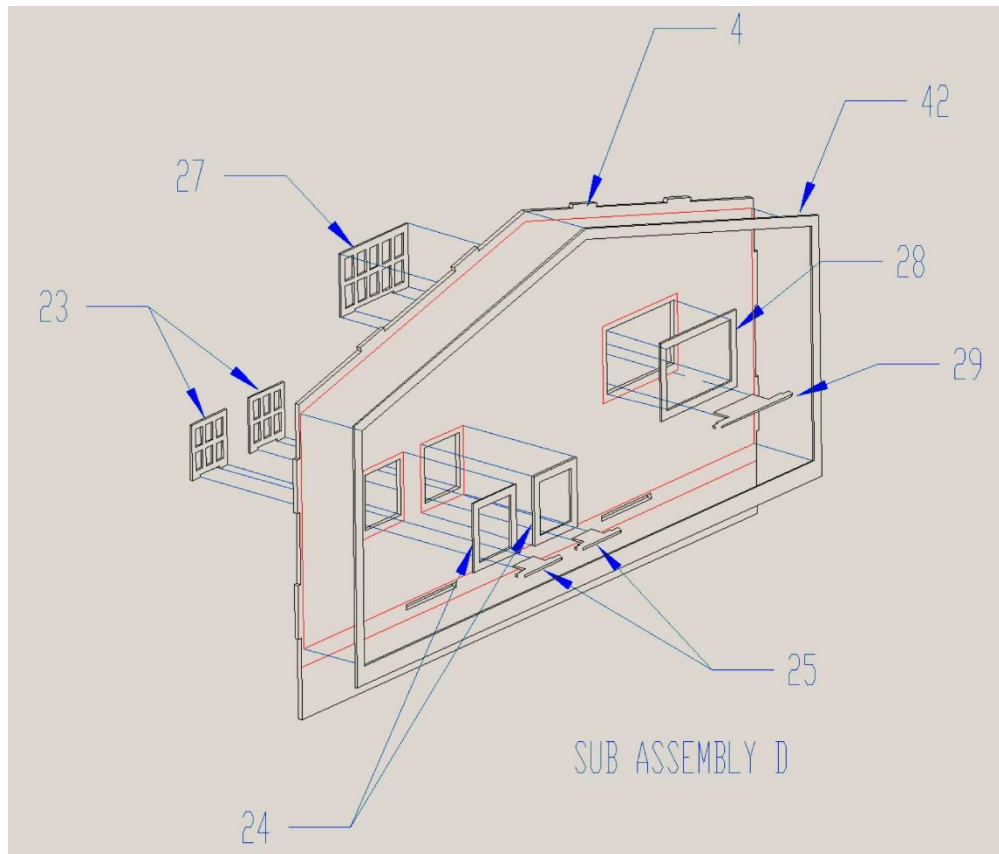
- Main freight doors are a two-part assembly, remove the three freight doors #18 and glue them to the inside of sidewall #3. Making sure to leave a gap at the bottom of the doors for dock floor #20 to slide under.
- The kit includes clear plastic to represent glass in the windows. The plastic attaches as the inner-most layer of the overall window. Peel the 3M adhesive backing off the wood window and press the clear plastic to the window. The windows are not shown in the Sub Assembly diagram above. Keeping a finger on each side of the window helps to center the plastic as it lands on the window.
 - NOTE – It is easier to apply the glass to the wooden windows early in the process, but its also hard to keep the glue off the clear plastic when securing the window. So if your not confident in your glue management, you might consider putting the clear plastic on last, after the window glue has dried.
- Attach freight door frame #26 to main freight doors on sidewall #3
- Attach overhead window frame #34 to side #3 keep frame centered over opening.
- Attach window frame #35 (locating the adhesive to the inside of warehouse) to frame 34
- Attach overhead window parts #33 on top of #35.
- Place small square window frame #31 around window opening on side #3. Insert window #30 into place (locating the adhesive to the inside of warehouse).
- Set sidewall #3 to the side.

Sub Assembly C



- Attach clear plastic to windows, as in previous assemblies.
- Place both window frames #28 onto the openings of side # 5
- Place window sill #29 in to the bottom of window openings with sill facing out, on the exterior of the wall. With the “notch” cut out at the bottom of the window frame #27 place the frame into the opening with the adhesive facing the interior of the warehouse.
- Set wall #5 to the side

Sub Assembly D



Place both windows frames #28 onto the openings of side # 4

Place window sill #29 in to the bottom of window openings with sill facing outside, on the exterior of the wall. With the “notch” cut out at the bottom of the window frame #27 place the frame into the opening with the adhesive facing the interior of the warehouse.

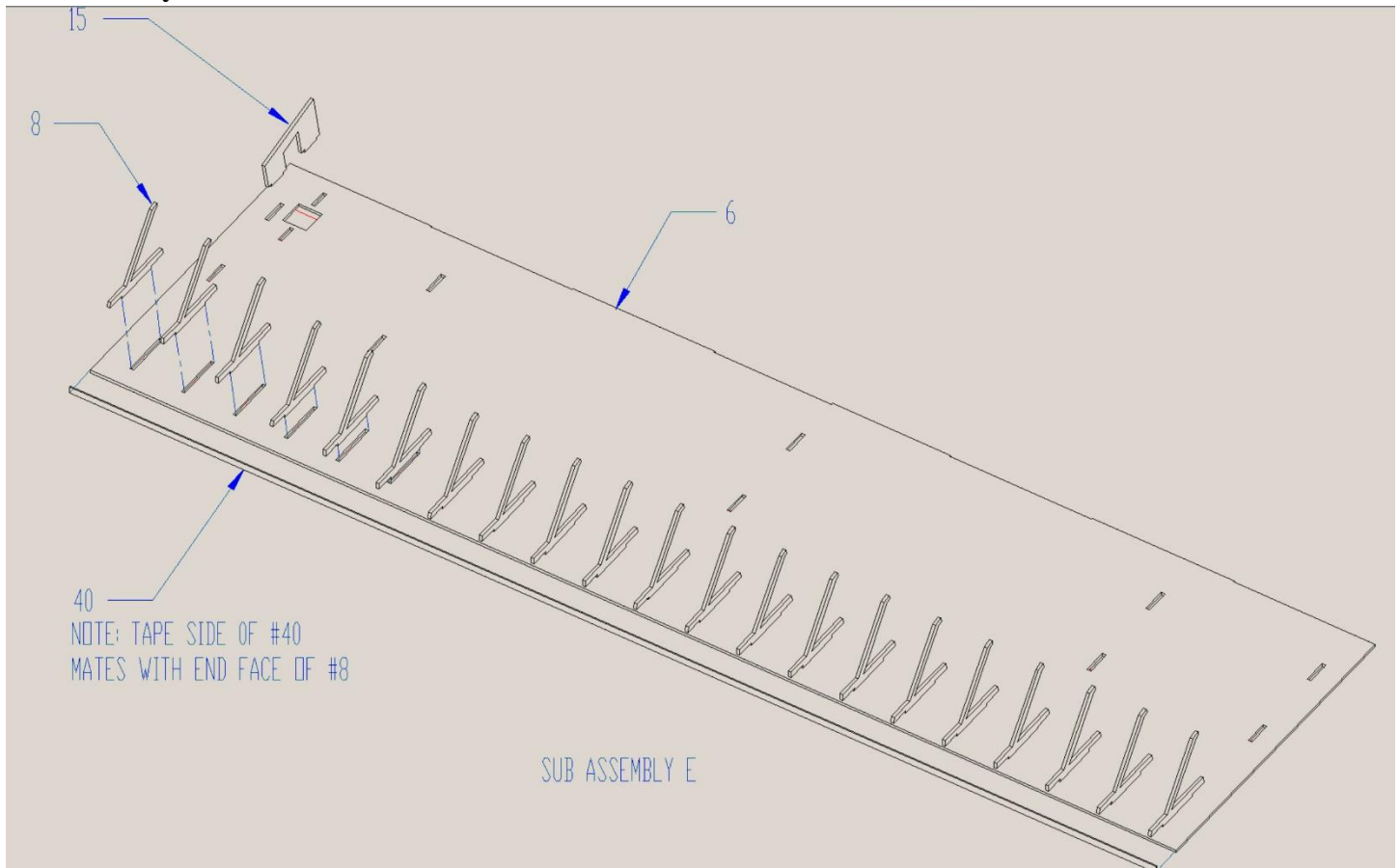
Peel and stick exterior window frames 24 and place them onto smaller window openings

Insert window sills #25 into the bottom of smaller windows openings with sill facing outside, on the exterior of the wall.

Insert windows #23 with adhesive facing the interior of warehouse.

Set side #4 to the side.

Sub Assembly E



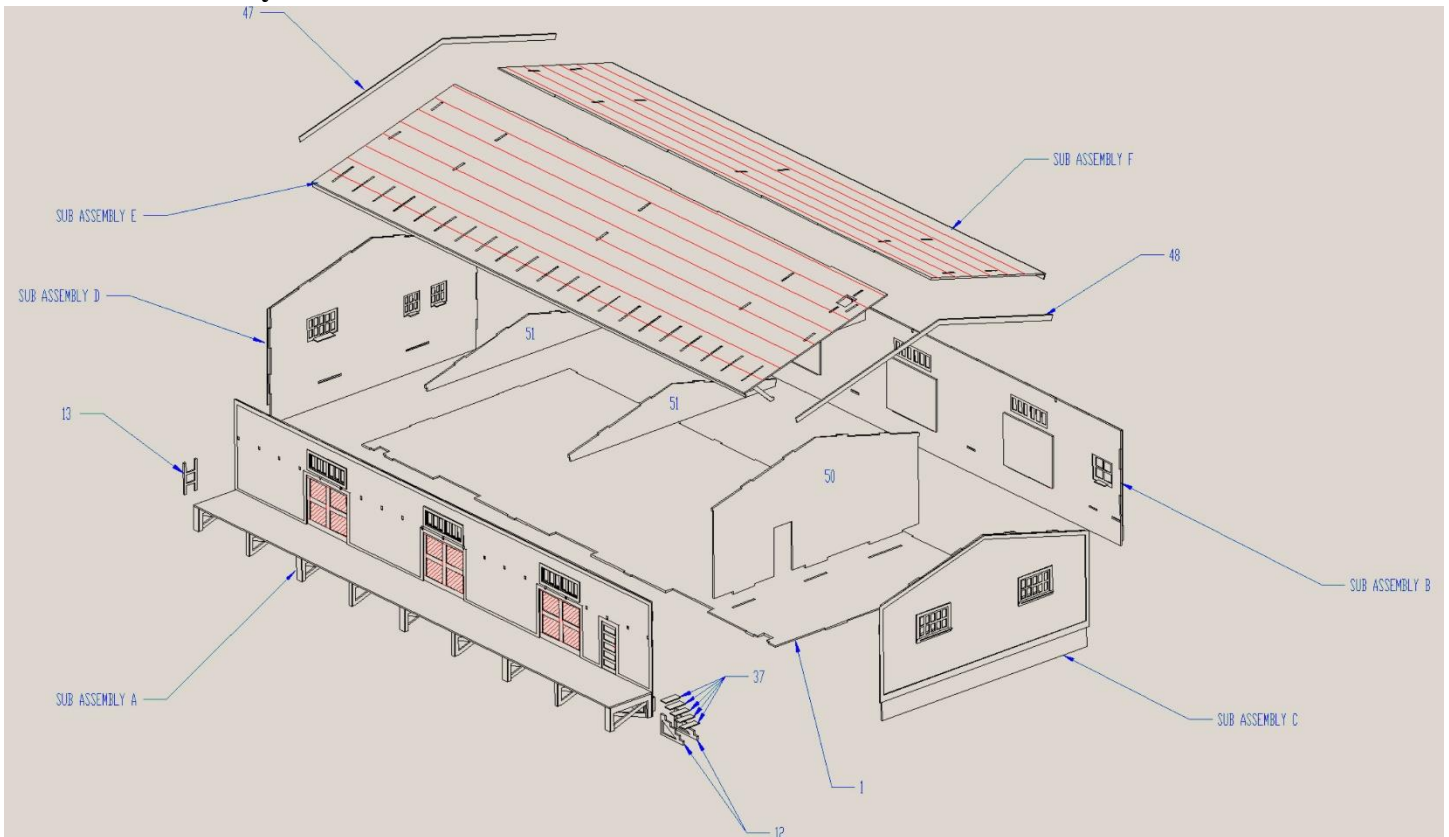
Carefully remove all 21 of the roof rafter tails 8.

Glue them to roof half #6 by placing the tabs into the openings, noting their orientation.

Remove chimney stop 15 and glue into place per drawing

Set roof half aside.

Walls Final Assembly



Carefully cut free interior office wall #50 and glue to floor #1

Lay wall Sub Assembly **B** flat with interior wall facing up.

Glue floor 1 to Sub assembly **B** wall.

Continue to glue additional wall sub-assemblies **C** and **D** making sure the walls corners are tight with no gaps. Add the last wall sub assembly **A** to complete the four walls of the structure.

Warehouse Trim

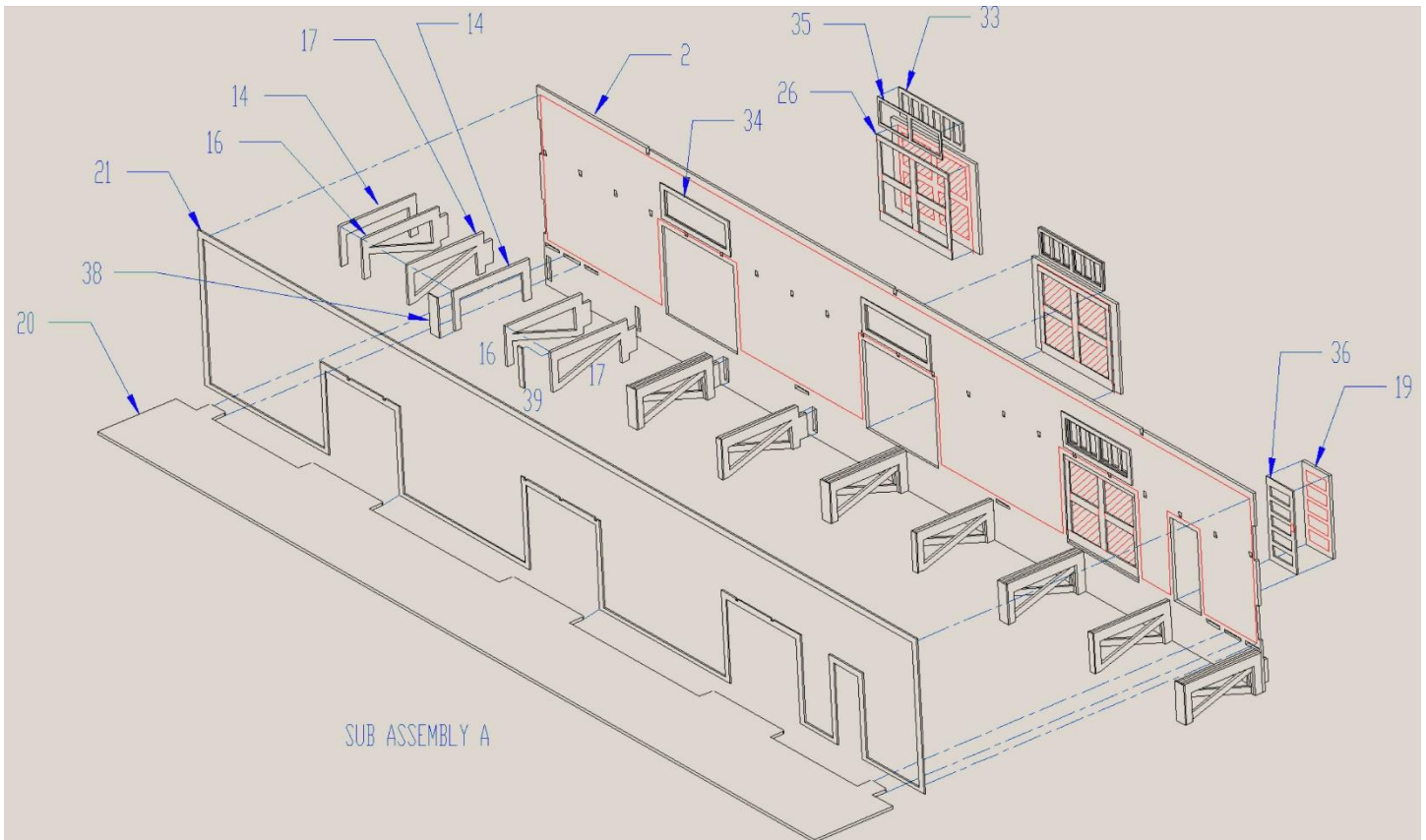
All these parts will be “Pell and Stick,” no need for glue.

Carefully remove trim piece #21 for wall assembly A and carefully lay it out. Firmly press to sidewall part #2. Now the office door #19 can be installed by pressing into place per drawing.

Now for sidewall #3 remove trim part #22 and place it into position per drawing. Trim #11 can now be installed on the base of the structure. Trailer bumpers #10 can be pressed in to there location just below each of the three main doors.

Both outside trim parts #42 can be installed on the last two remaining walls. Glue both remaining internal roof rafters #51 into place.

Rail Dock



There are 5 large dock supports made up of 5 parts, and 4 medium dock supports made up of 3 parts.

Medium - glue supports #16 together with #17 and let dry.

Large - made using part #14 glued to both sides of the #16 and #17 supports. Once these support assemblies have had time to dry use a sanding stick to smooth the top and ends.

Install end caps, part #38 (large) and #39 (medium), onto end of each dock support.

Glue dock support assemblies to warehouse per drawing. Spread small amounts of glue to the tops of the supports, insert dock top into warehouse and then press down on to support brackets.

The small ladder #13 can now be glued in place.

The five treads #37 for the steps can be installed on to the two frames #12. The finished steps can be glued to the dock.

Roof

Roof half #6 will need to be glued to the warehouse. It will fit into the rafter tabs. Once it is in position begin using tar paper strips that are peel and stick. Start at the bottom of the roof and align each strip with the lines across the roof. Make sure no two vertical seems are on top of each other. Continue to the top and stop once you reached the top. Glue the other roof half #7 to warehouse carefully making sure each of the rafter tabs are in alignment. You may need to use a pair of tweezers to adjust the rafter tails so they fit in to their locations above the dock. Proceed to lay the tarpaper strips to this remaining side, starting at the bottom and working your way to the top again. For the very crown or top of the roof, use the narrow strip over both sides to fill the gap. Cut out the hole where the chimney is located with an Exacto knife. Paint the roof grimy black and install the chimney after it has been painted too.

Eave Facias

Facia parts are peel and stick parts. Place the end facias #47 and #48 shaped like an A to the side of the roof, noting that one side of the fascia is longer than the other. Fascia #40 can be applied over the rail dock. On the truck door side, fascia #41 can be installed as well.

Go back and touch up any parts that might be missing paint and weather to your liking and enjoy this fine model.

Completed model photos



Photos of Prototype

