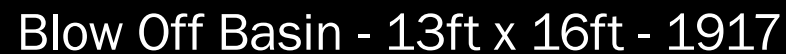


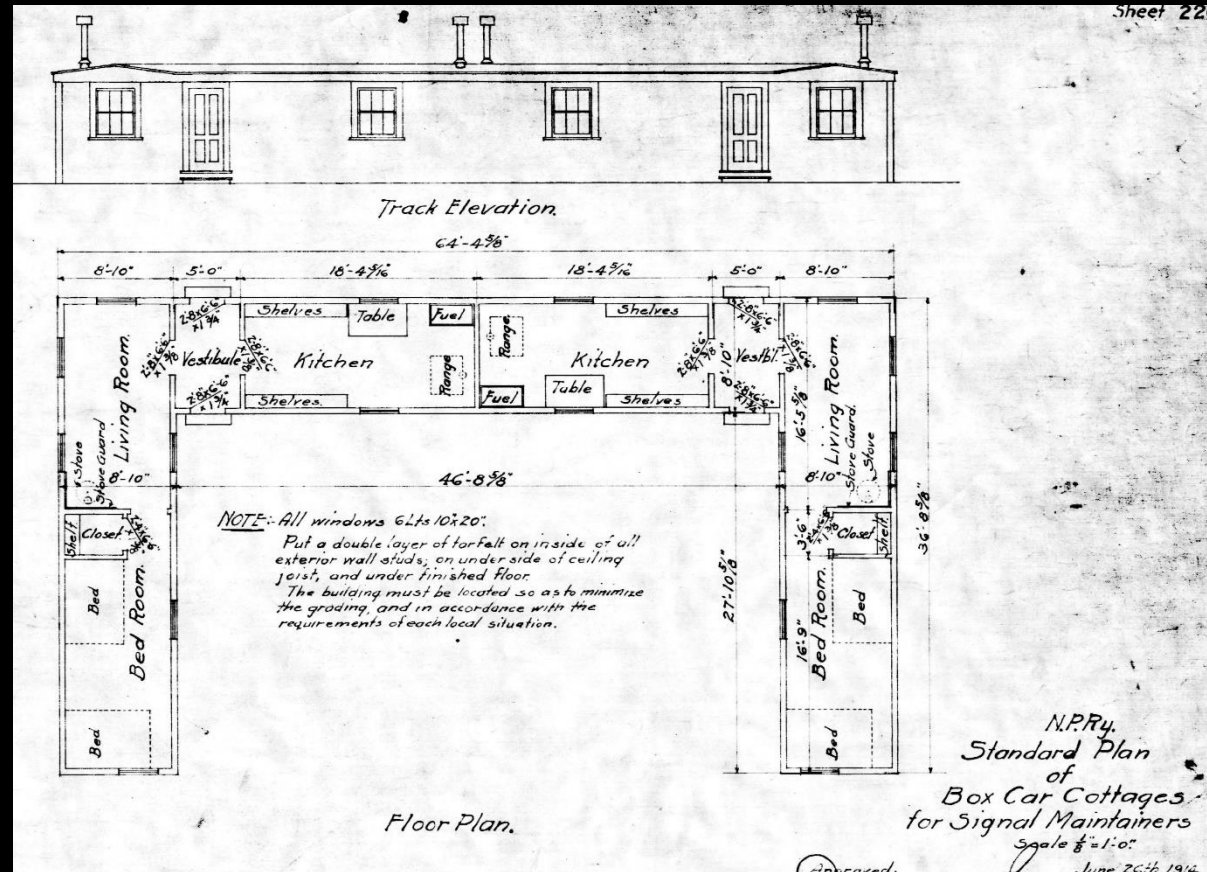
Blow Off Basin - 1.8 inches by 2.2
\$25.00



3

Boxcar Cottages - 5.0 inches by 8.8

\$30.00

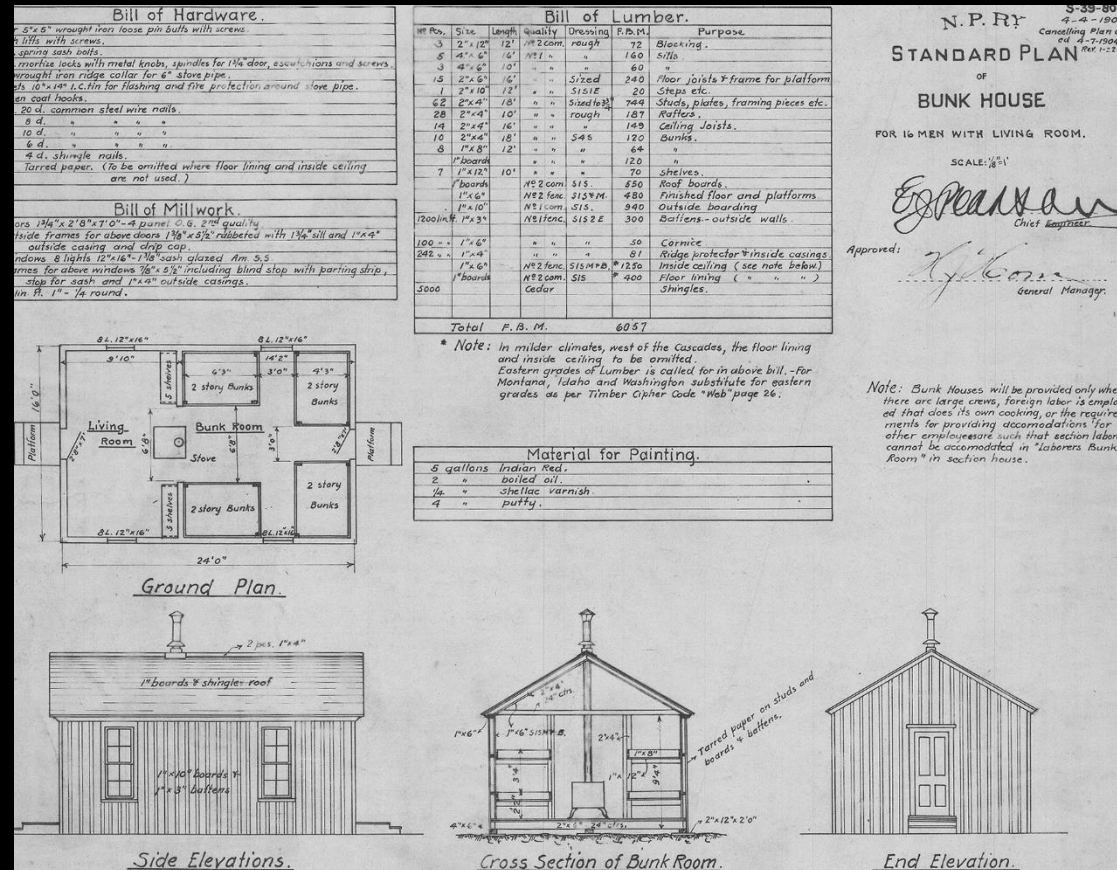


Boxcar Cottages - 36ft x 64ft - 1914

4

Bunk House for 16 Men - 2.2 inches by 3.3

\$30.00

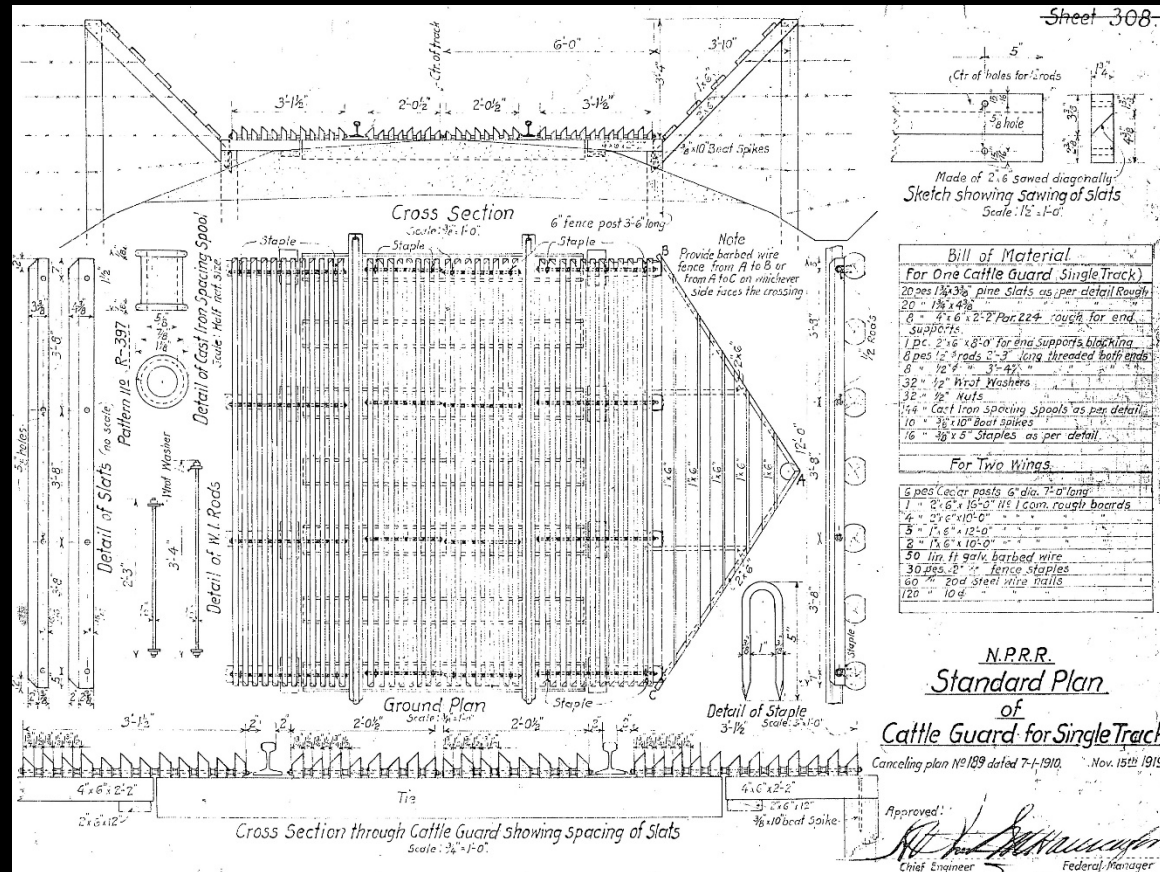


Bunk House for 16 Men - 16ft x 24ft - 1905

5

Cattle Guard for Single Track

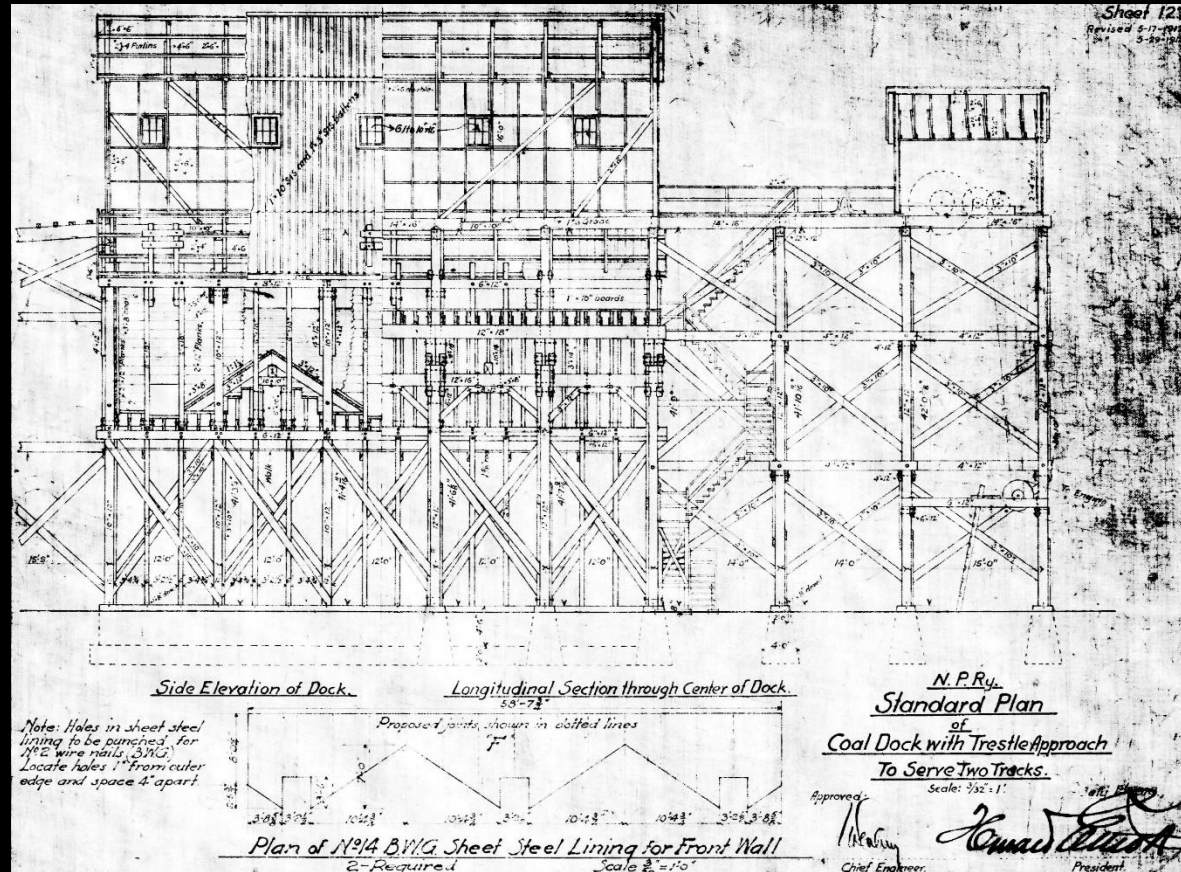
\$20.00



Cattle Guard for Single Track - 1919

6

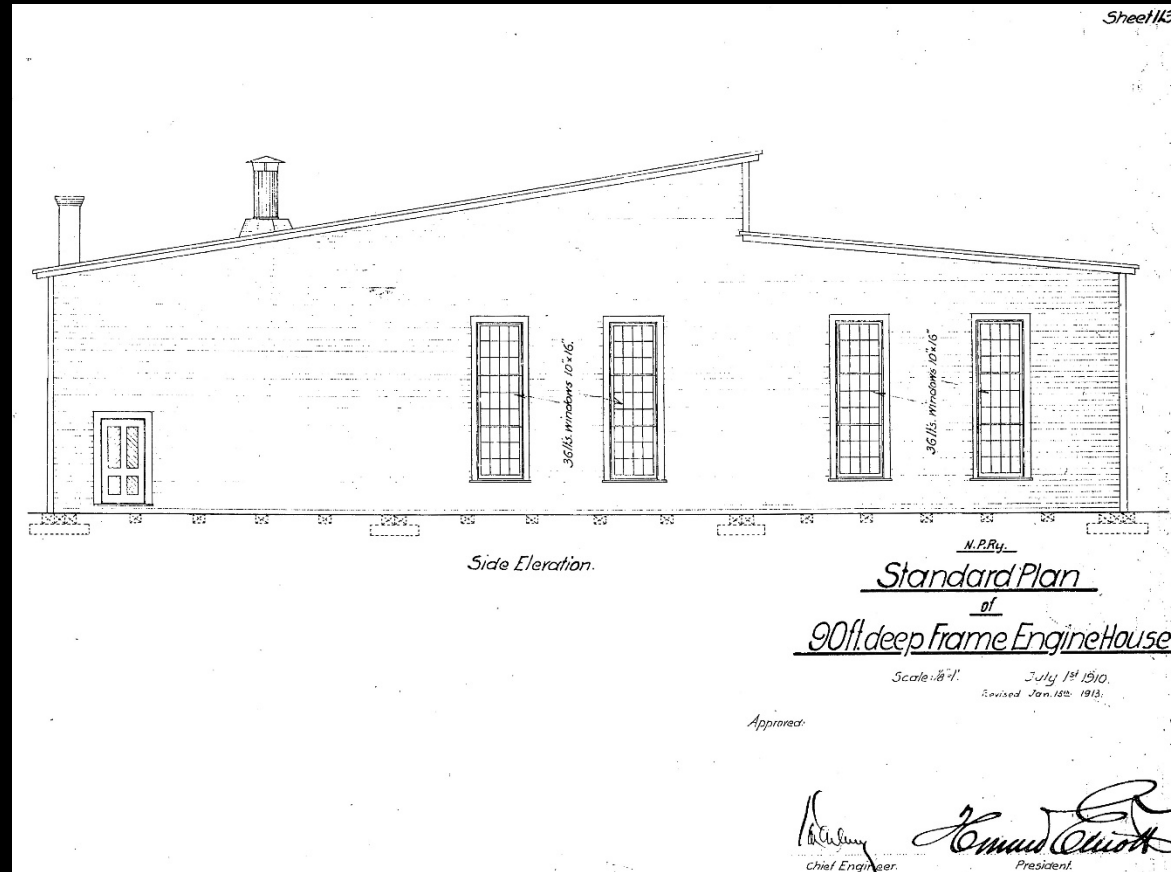
Coal Dock with Trestle Approach for Two Tracks 3.3 inches by 42.3 \$220.00



Coal Dock with Trestle Approach for Two Tracks - 24ft x 307ft - 1910

7

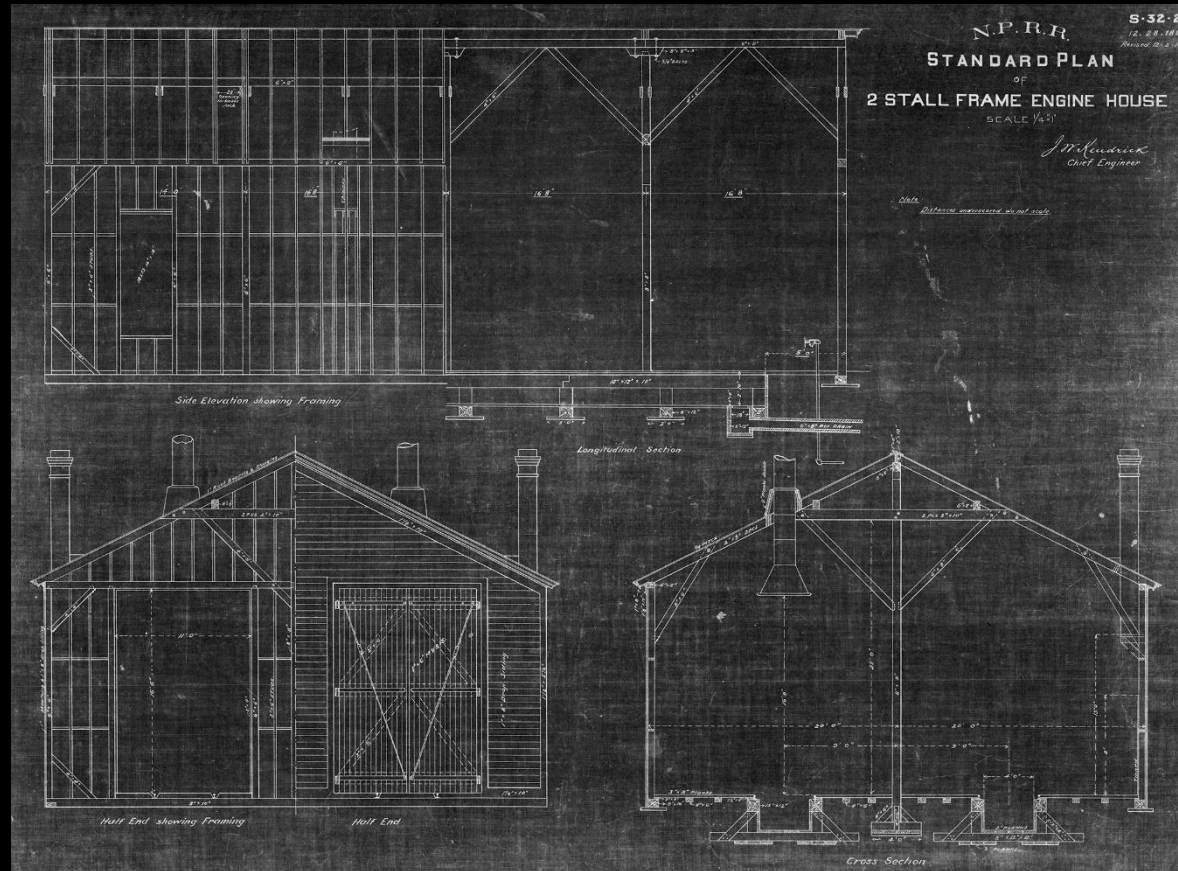
Engine House 2 Stall – 5.0 inches by 12.4 \$60.00



Engine House 2 Stall - 36ft x 90ft - 1910

8

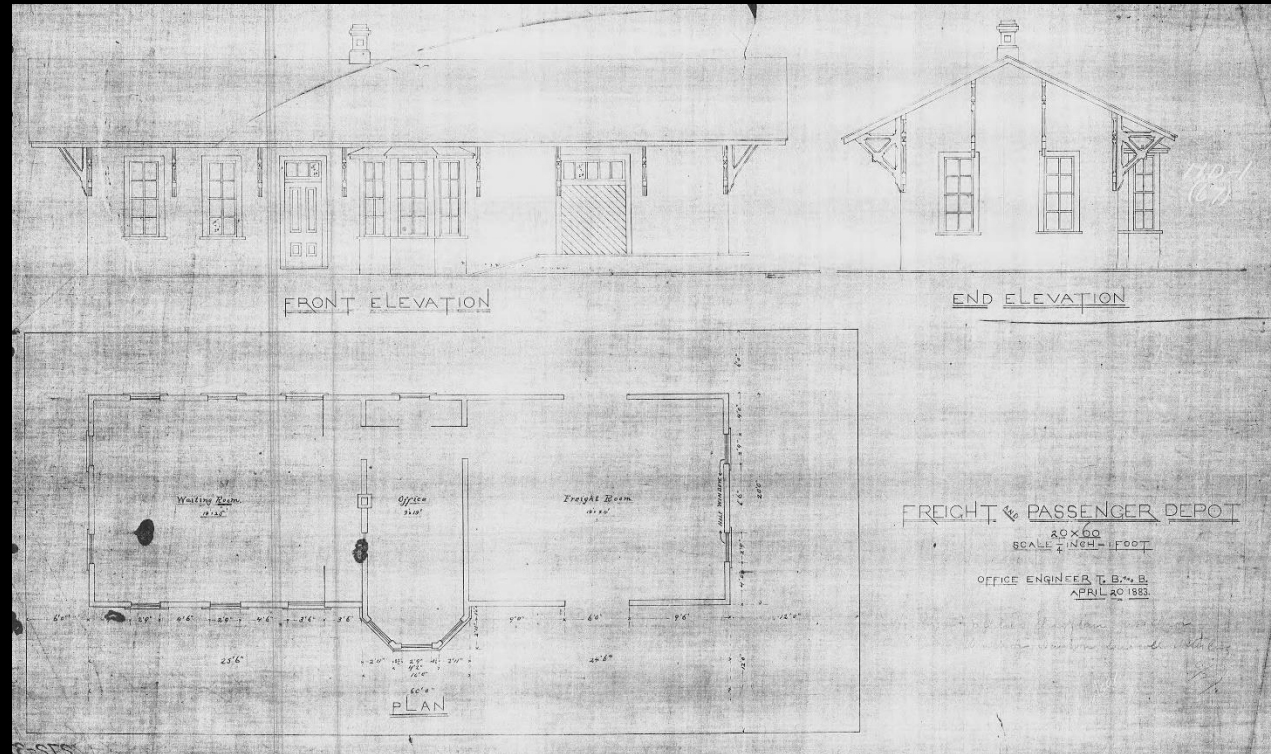
Engine House 2 Stall - 5.5 inches by 12.4 \$60.00



Engine House 2 Stall - 40ft x 90ft - 1889

9

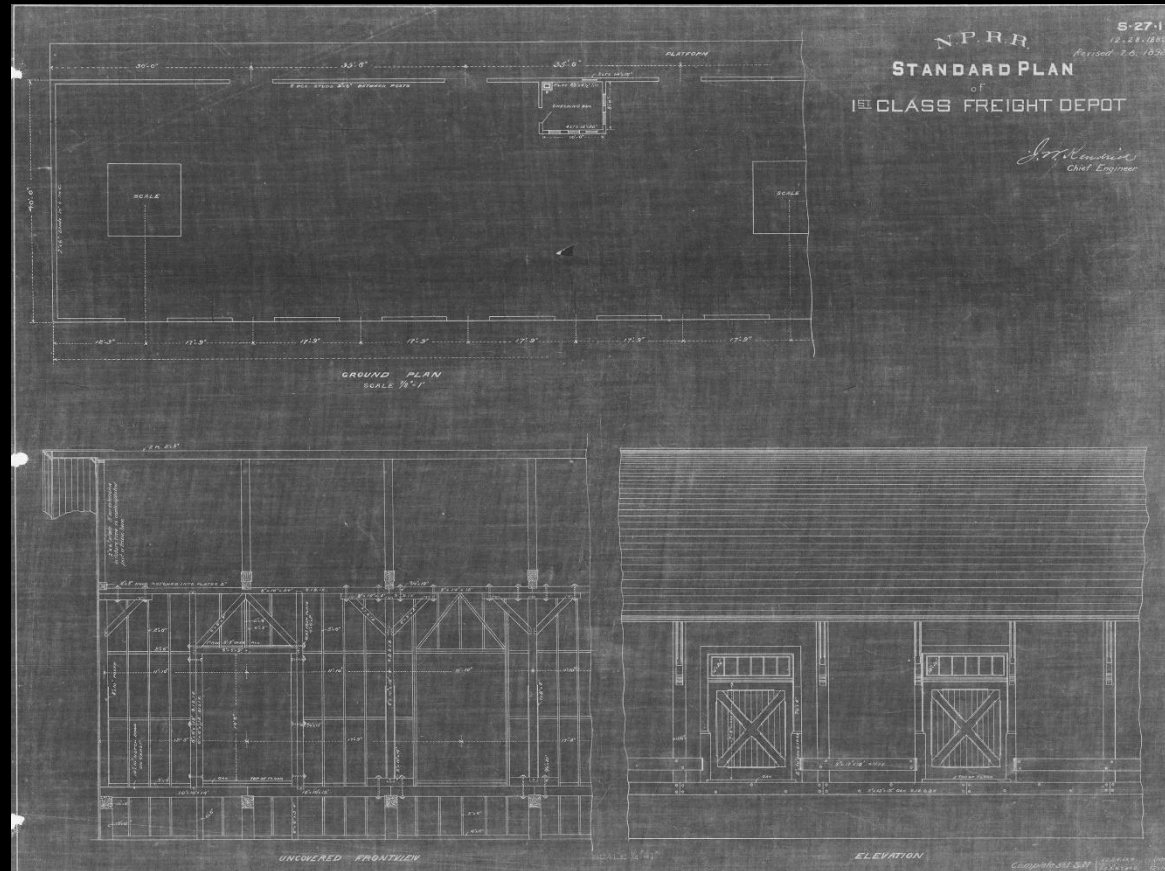
Freight & Passenger Depot - 2.8 inches by 8.3 \$80.00



Freight & Passenger Depot - 20ft x 60ft - 1883

10

Freight Depot 1st Class - 5.5 inches by 13.8 \$80.00

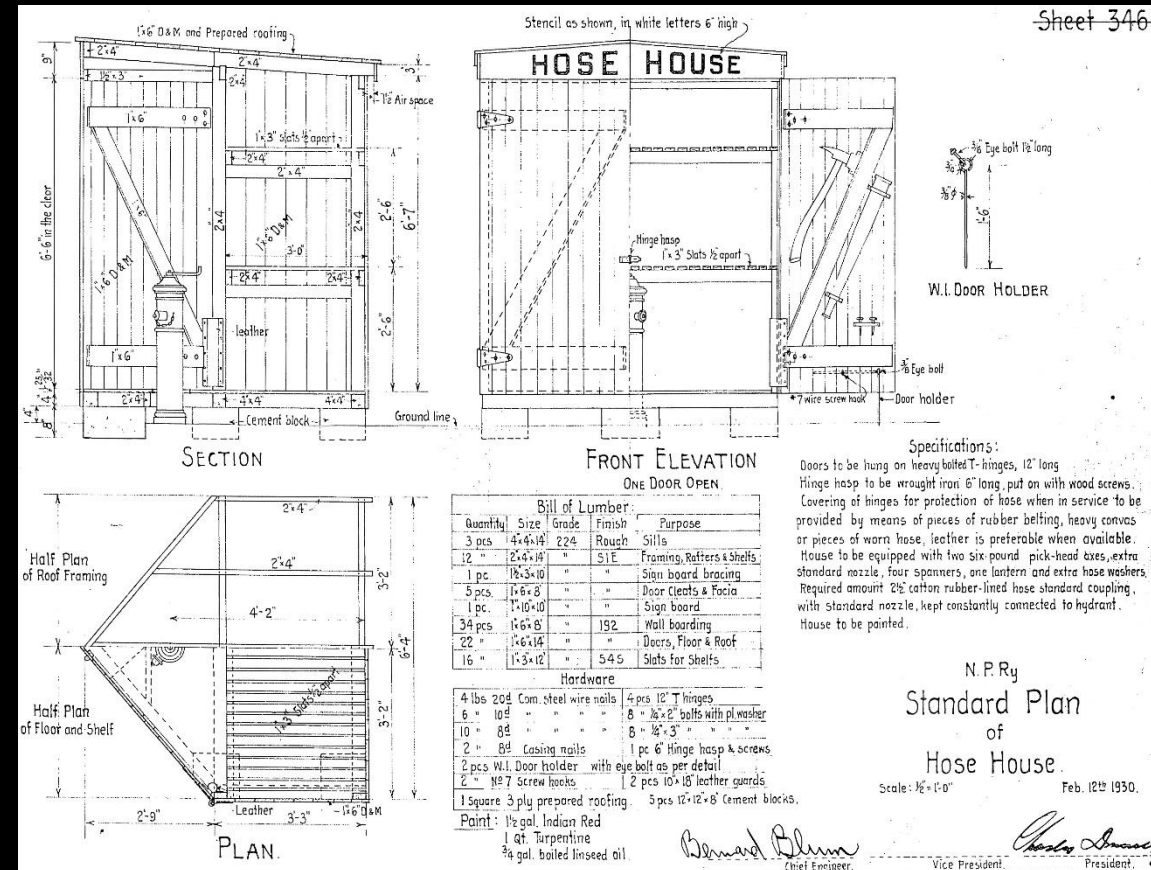


Freight Depot 1st Class - 40ft x 100ft - 1889

11

Hose House - 0.8 inches by 0.8

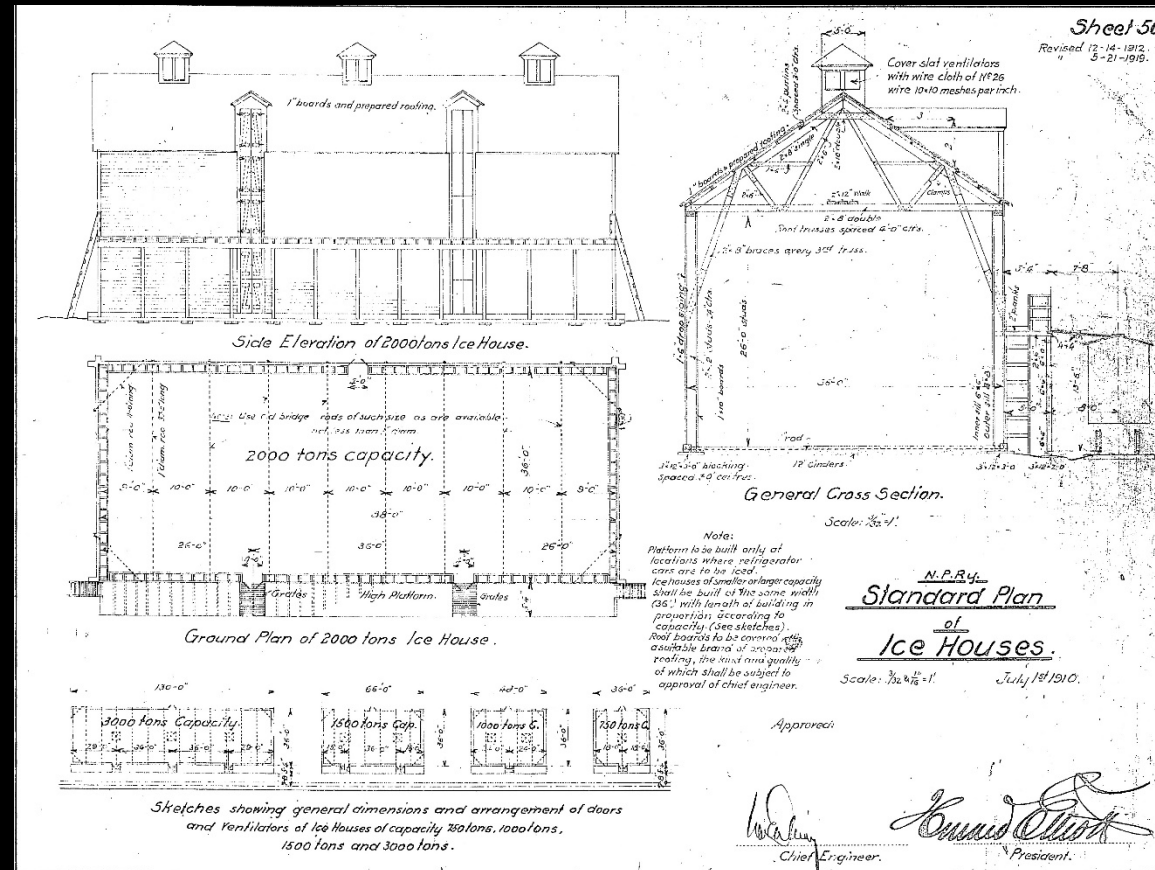
\$15.00



Hose House 6ft x 6ft - 1930

12

Ice House - 2000 Ton - 5.0 inches by 12.1 \$70.00



Ice House - 2000 Ton - 36ft x 88ft - 1910

13

**Lineside Boxcar Shed.jpg 1.2 inches by 5.0
\$25.00**

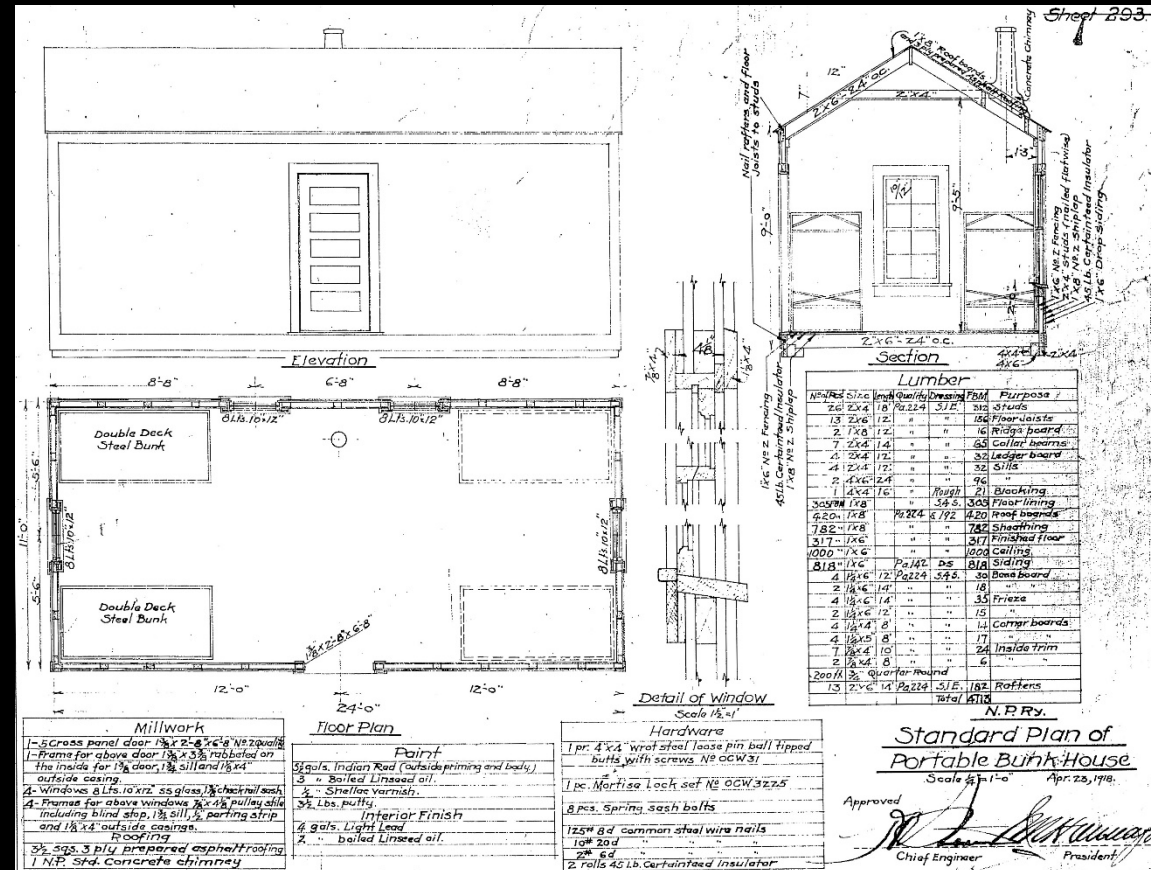


Lineside Boxcar Shed

14

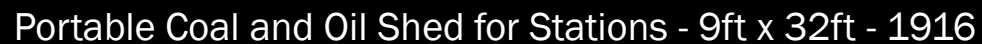
Portable Bunk House - 1.2 inches by 3.0

\$25.00



Portable Bunk House - 11ft x 24ft - 1918

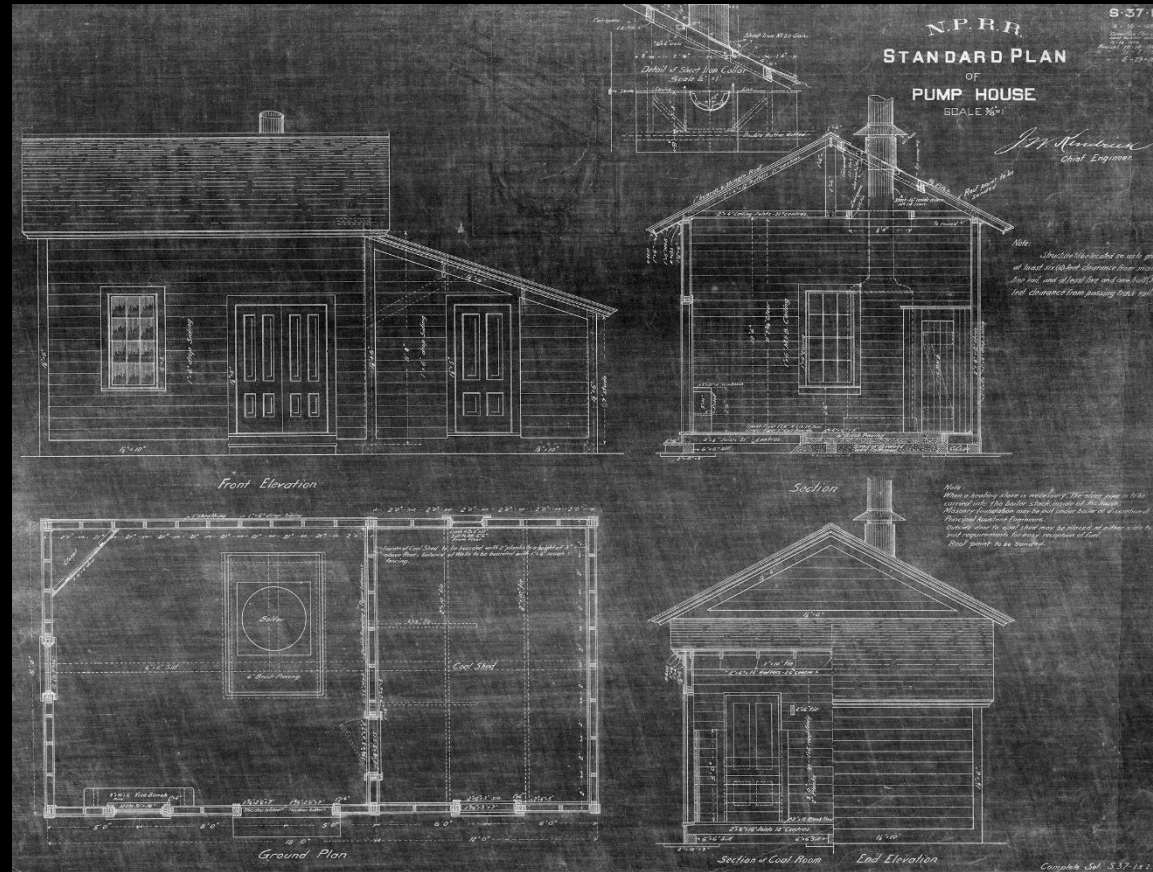
Portable Coal and Oil Shed for Stations - 1.2 inches by 4.4 \$20.00



16

Pump House - 2.2 inches by 4.1

\$50.00



Pump House - 16ft x 30ft - 1891

17

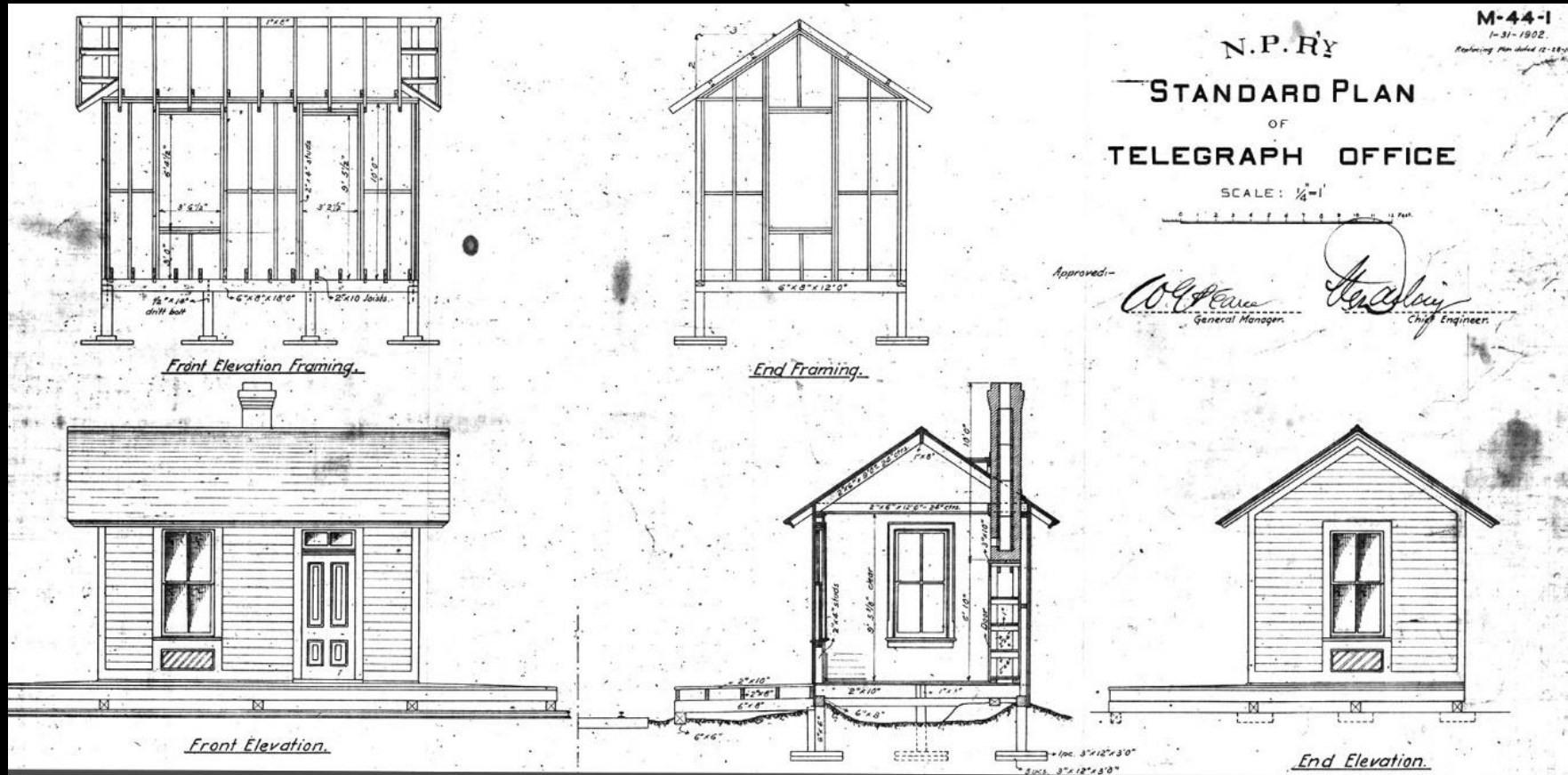
Section House - Ornate - 4.1 inches by 5.1 \$90.00



Section House - Ornate - 30ft x 37ft - 1903

18

Small Telegraph Office 1902 - 1.7 inches by 2.5 \$30.00



Small Telegraph Office 1902 - 12ft x 18ft

Team Track - Side or End Concrete Platform - 3.9 inches by 12.4 \$30.00

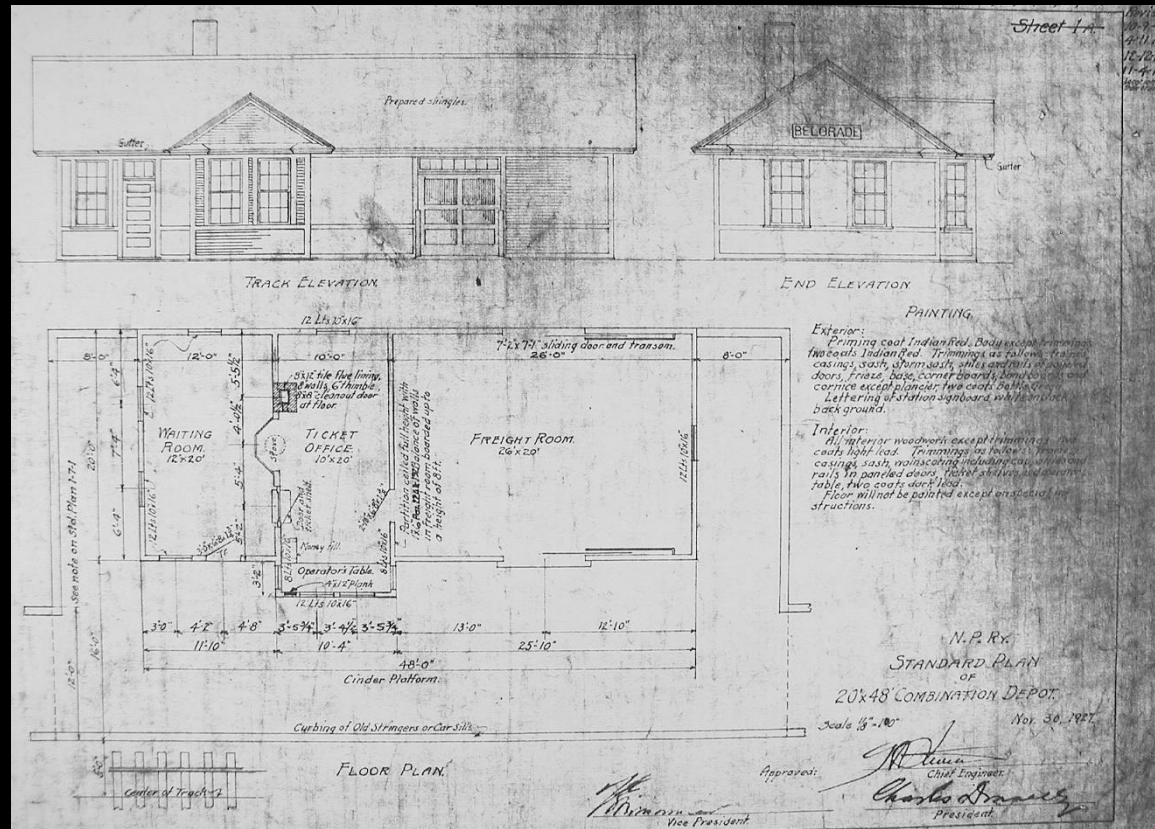


**Team Track - Side Wood Platform - 1.7 inches
by 12.4
\$20.00**



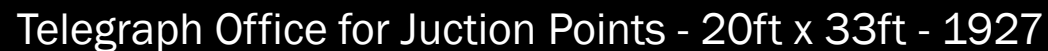
21

Combination Depot - 2.8 inches by 6.6 \$65.00



Combination Depot - 20ft x 48ft - 1927

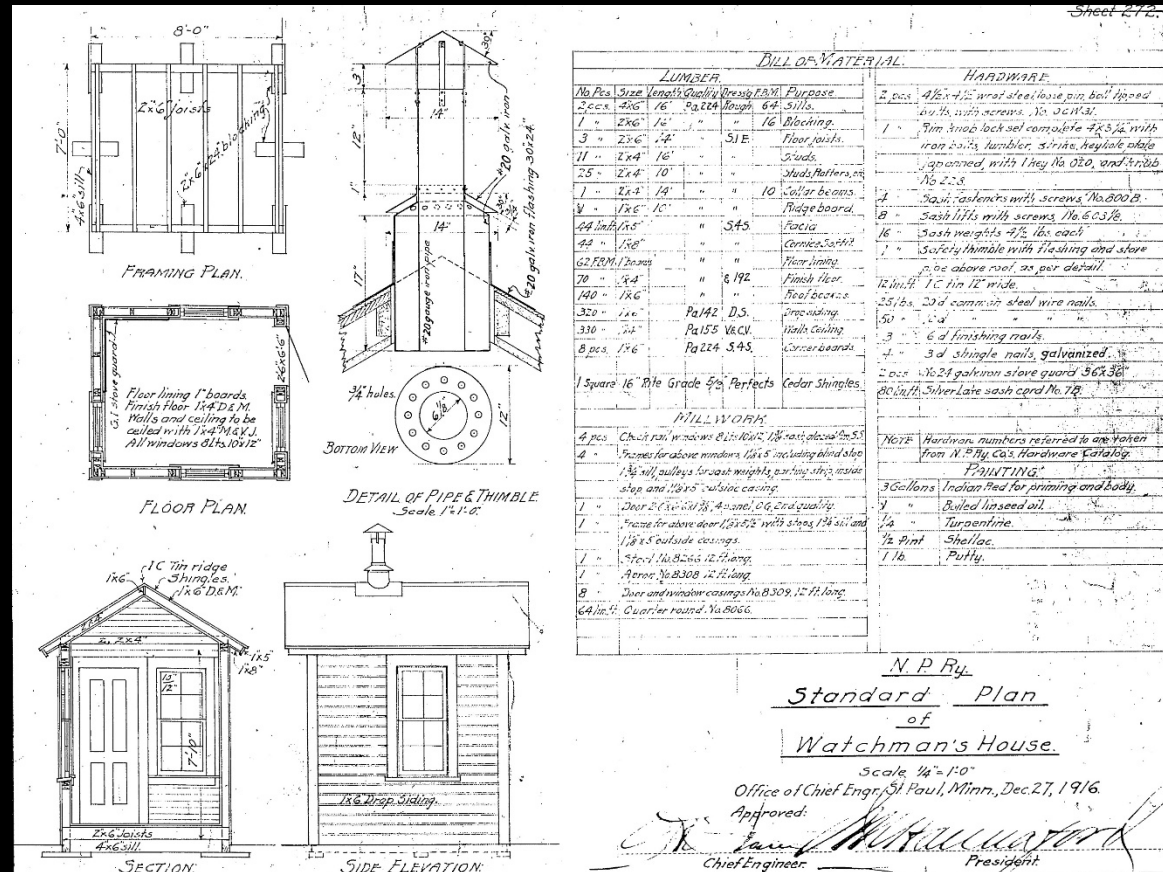
Telegraph Office for Junction Points - 2.8 inches by 4.5 \$60.00



23

Watchmans House - 1.0 inches by 1.1

\$20.00

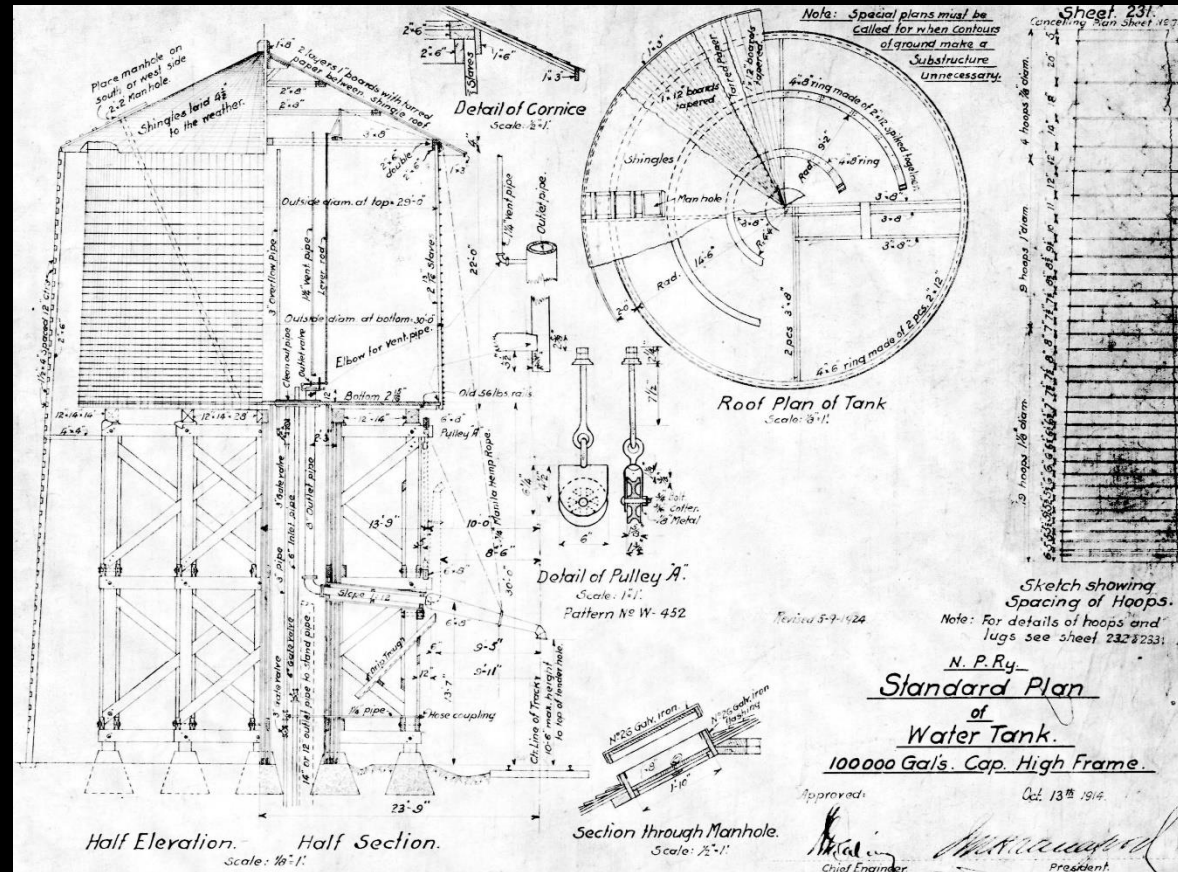


Watchmans House - 7ft x 8ft - 1916

24

Water Tank 100000 Gal - High Frame

\$80.00

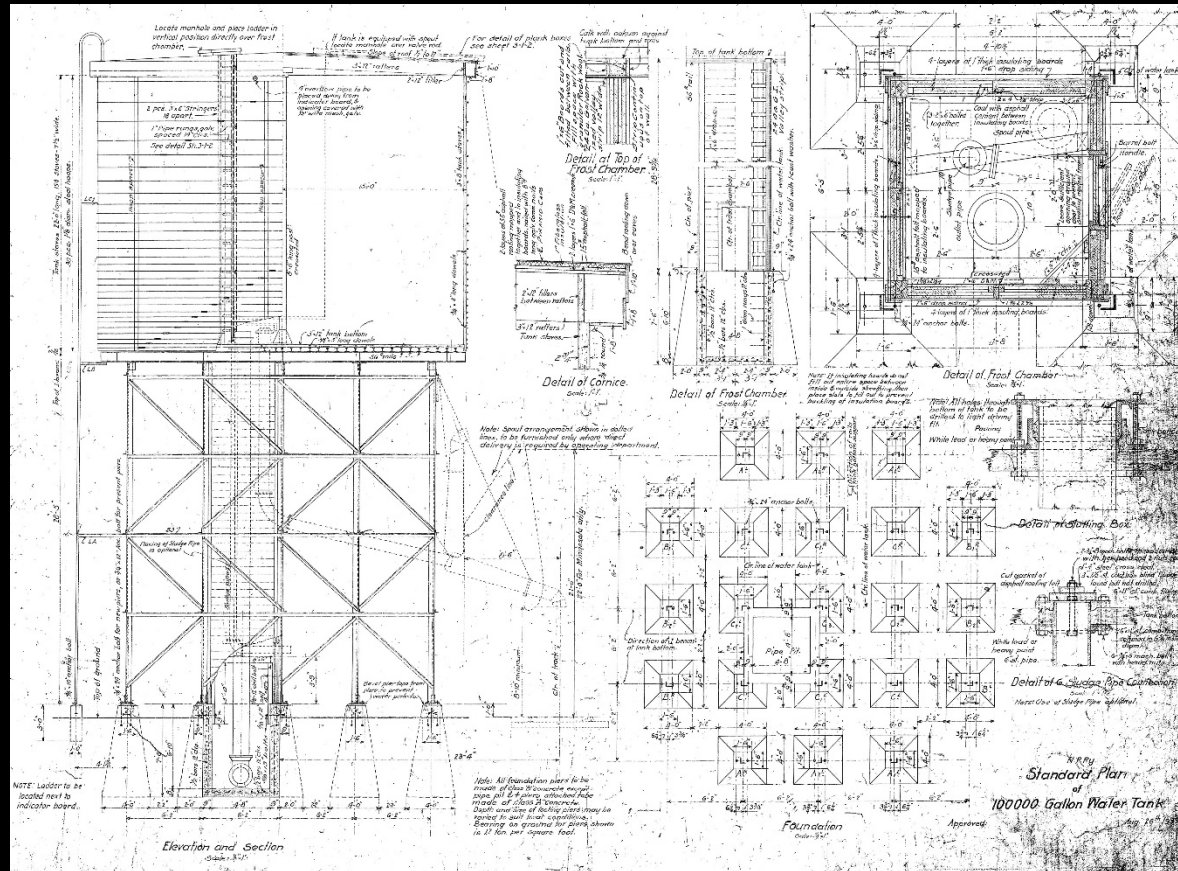


Water Tank 100000 Gal - High Frame - 1914

25

Water Tank 100000 Gal - Metal Frame

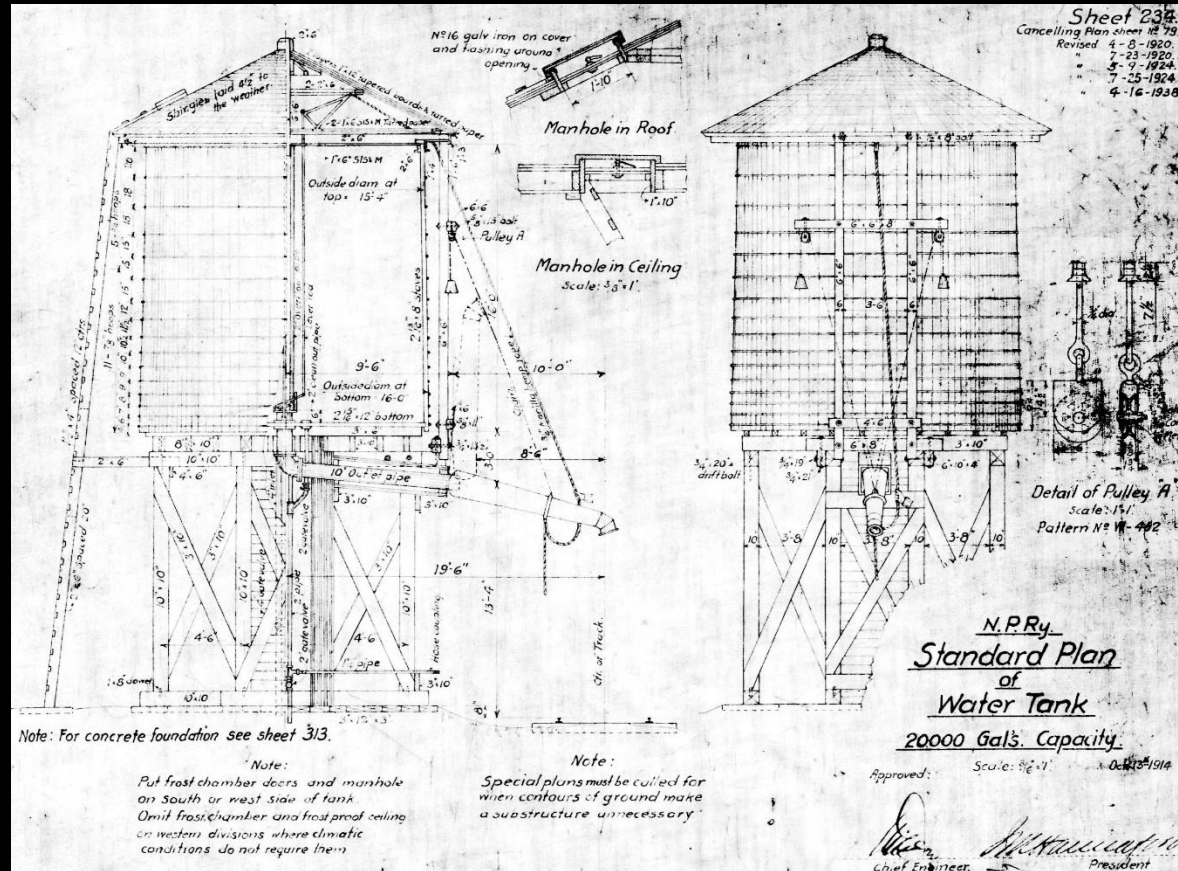
\$80.00



Water Tank 100000 Gal - Metal Frame - 1933

26

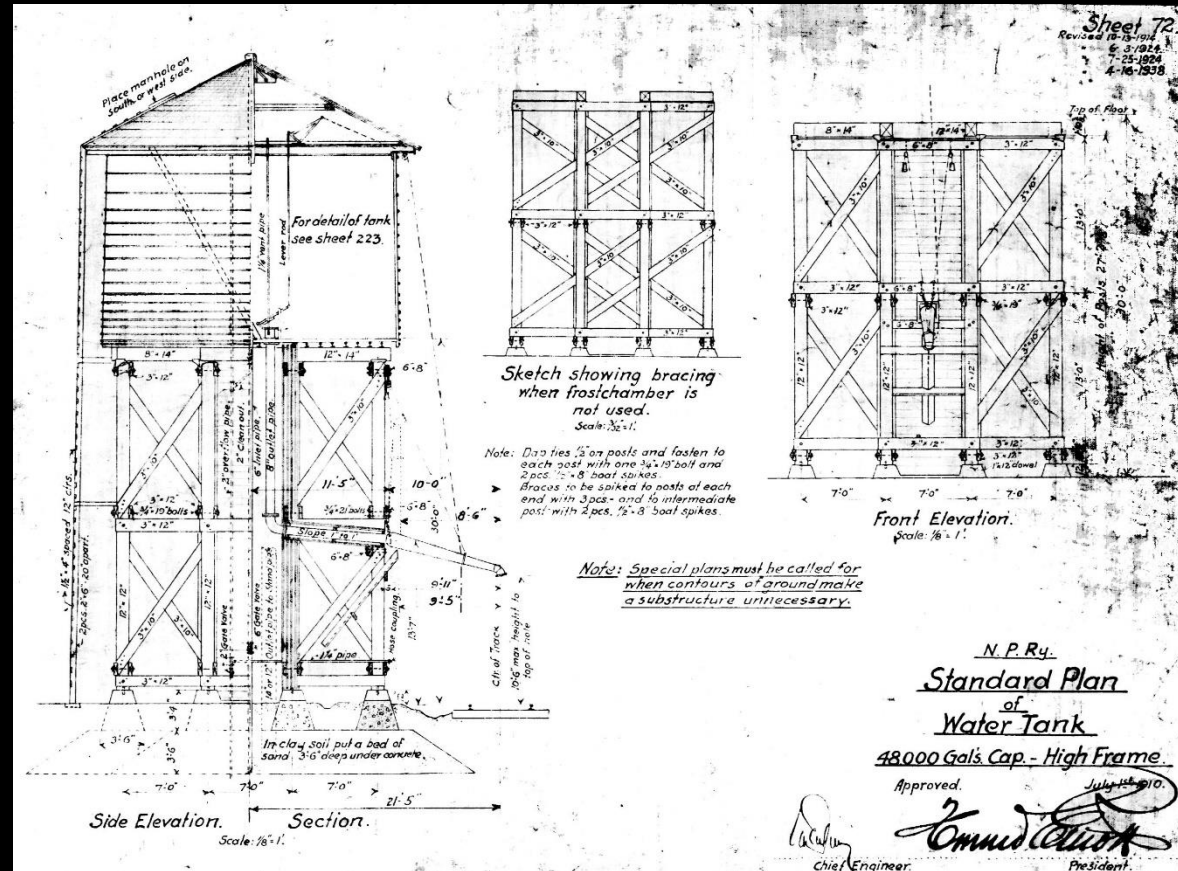
Water Tank 20000 Gal - Low Frame \$70.00



Water Tank 20000 Gal - Low Frame - 1914

27

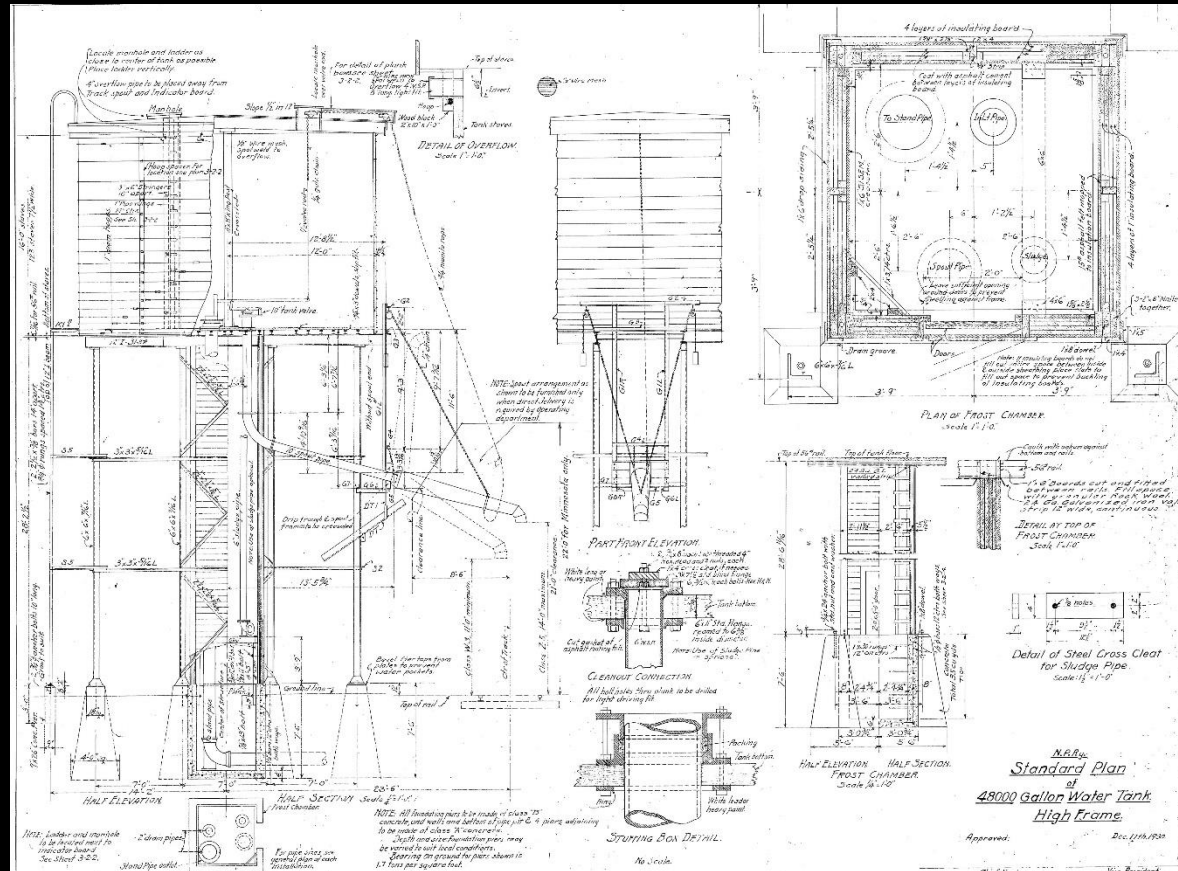
Water Tank 48000 Gal - High Frame \$70.00



Water Tank 48000 Gal - High Frame - 1910

29

Water Tank 48000 Gal - High Metal Frame \$70.00



Water Tank 48000 Gal - High Metal Frame - 1930

30

Water Tank – Metal

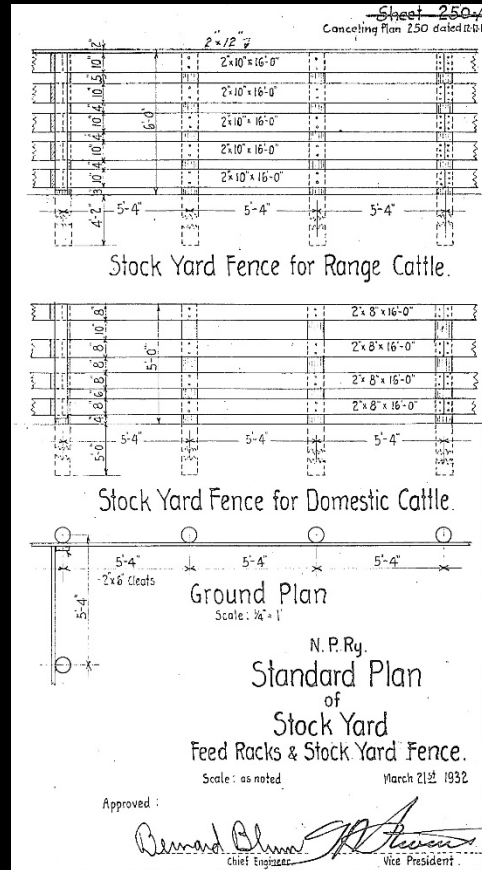
\$80.00



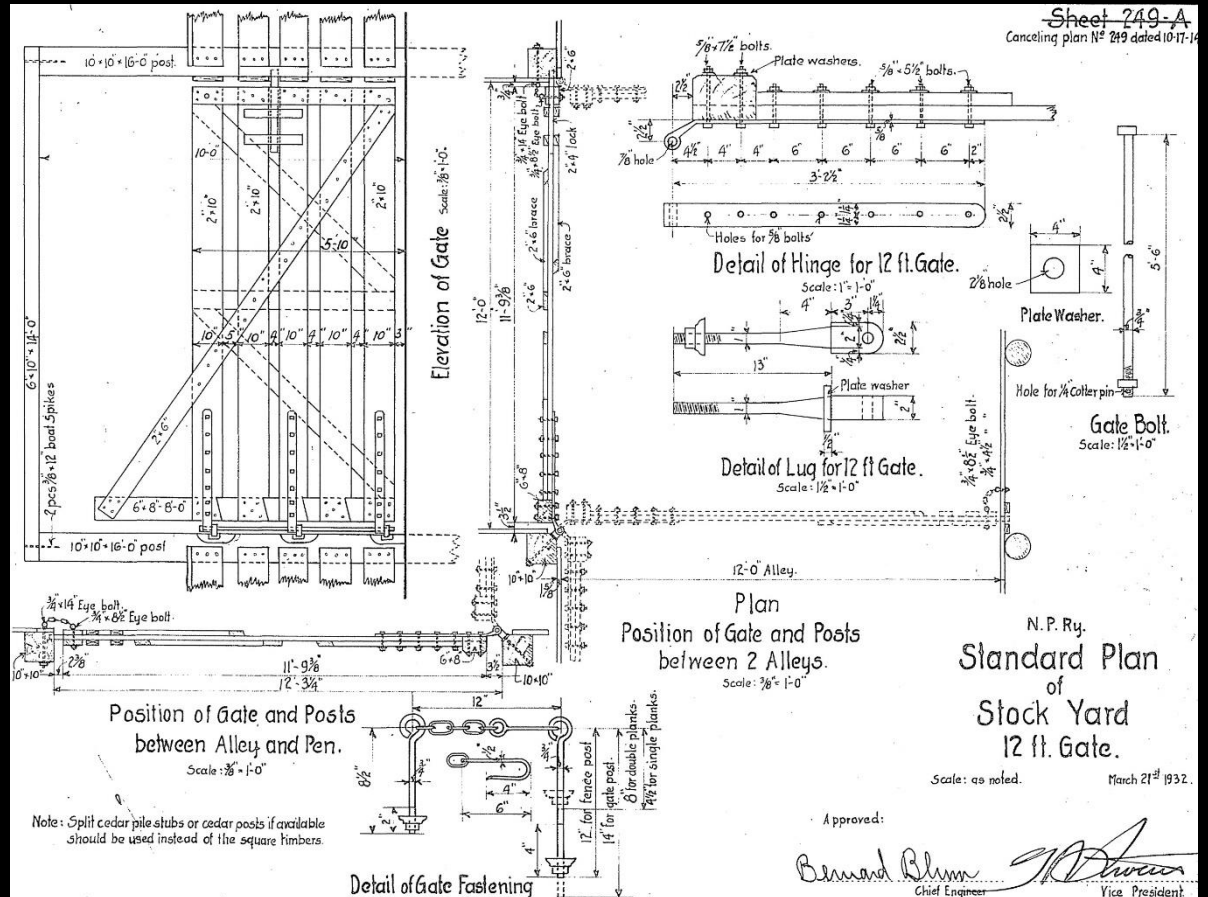
Water Tank - Metal

31

Stock Yard - Common Plans & Kit Materials for Fences, Ramps and Gates - 1914 \$30.00



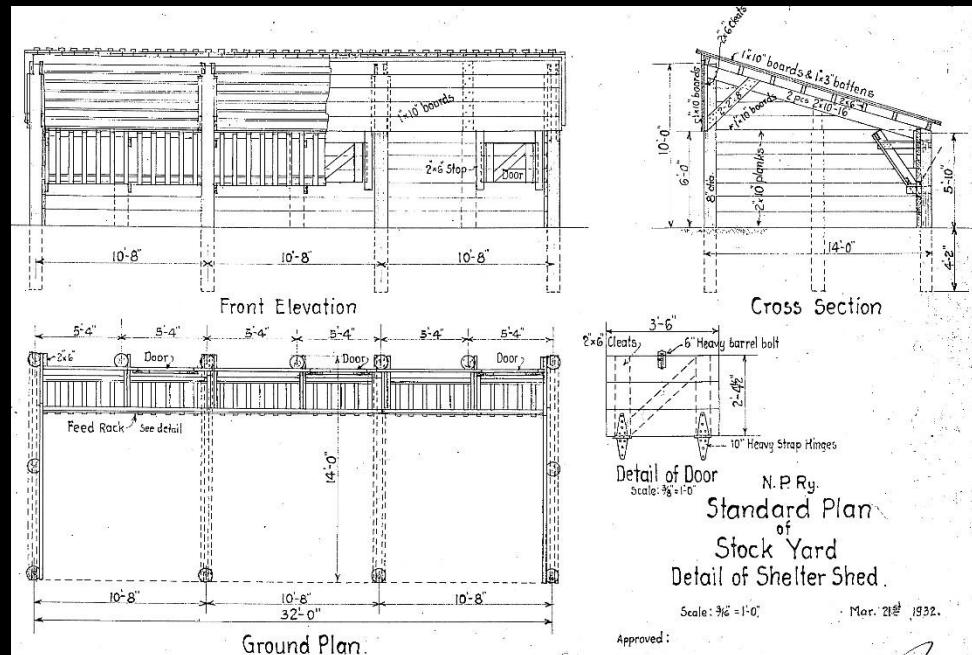
Stock Yard Fence - 1932



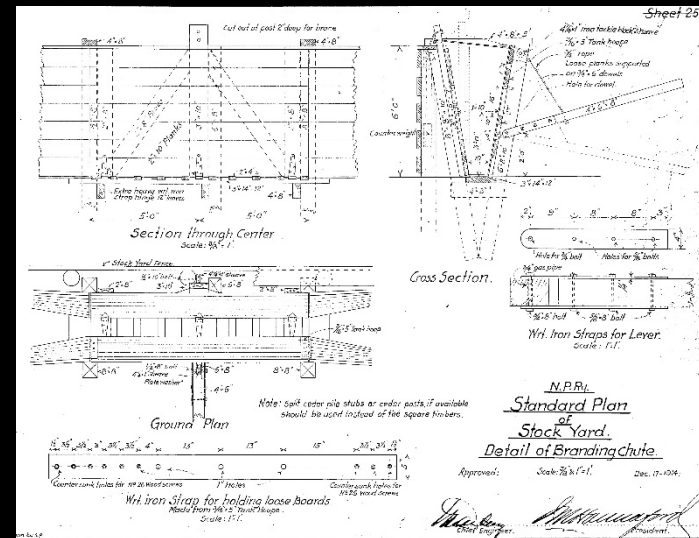
32

Stock Yard - Common Plans & Kit Materials for Shelter, Scale Shed, Branding Chute, etc. - 1914

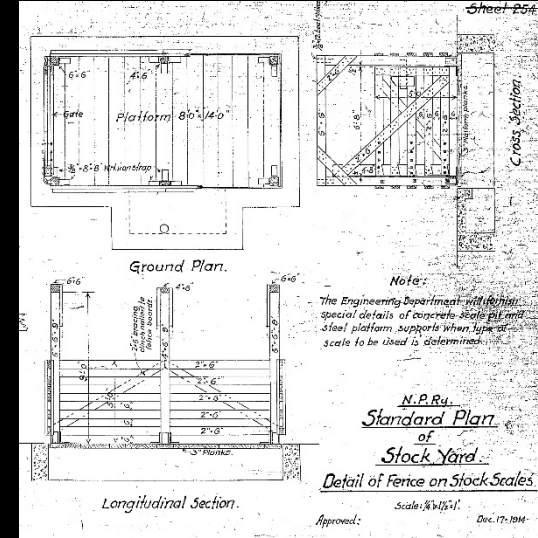
\$30.00



Stock Yard Shelter Shed - 1932



Stock Yard Branding Chute - 1914



Stock Yard Scale Fence - 1914

end