

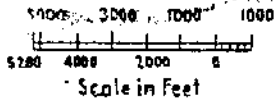
N.P.R.Y.

CONDENSED PROFILE
AND TRACK CHART
TACOMA DIVISION (2) MAIN LINE
SEATTLE, WASH.
TO
TACOMA, WASH.

SCALE: { HOR. 1" = 1 MILE
VERT. 1" = 200 FEET

Office of Chief Engineer, St. Paul, Minn.
May 25, 1965.

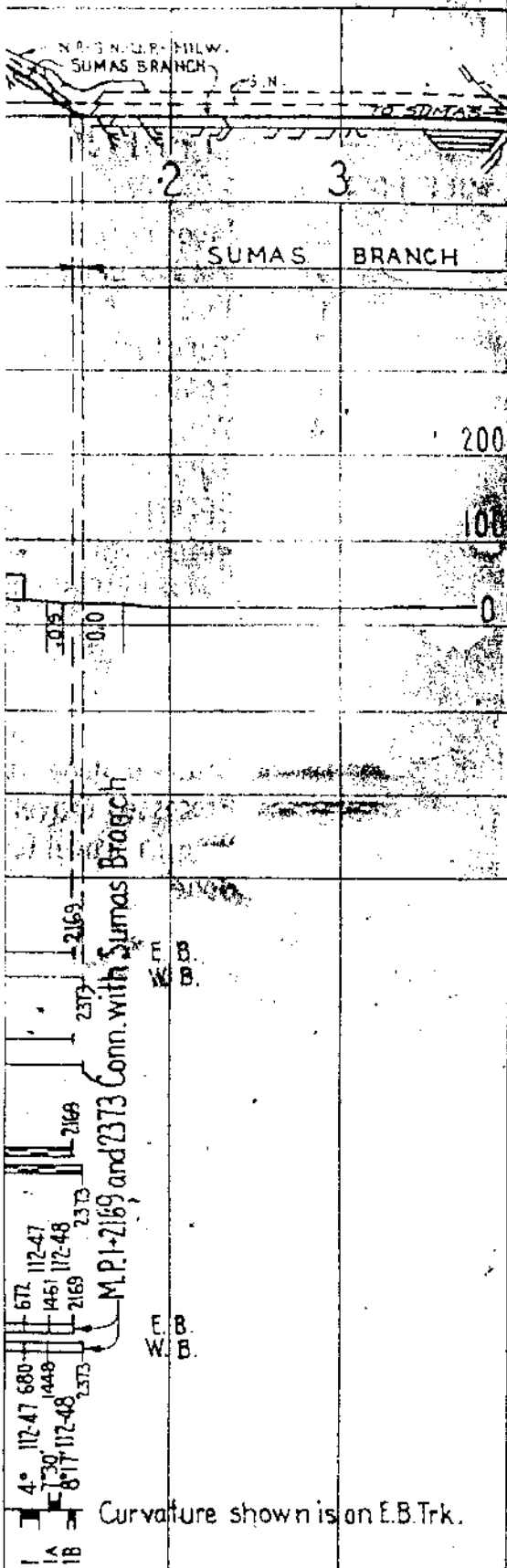
Revised Jan. 1970.



*This Profile is not the same scale
as the Standard Condensed Profile*

CENTRALIZED TRAFFIC CONTROL

TRACK SECTIONS



LEGEND

- DW Broken Wheel Detector
- DE Dragging Equipment Detector
- DH Hot Box Detector
- F Fuel
- T Turntable or Wye
- Z Scales
- W Water
- Y Yard Limit
- † Spring Switch without F.P.L.
- ⊕ Spring Switch with F.P.L.
- Rail & Flange Lubricators

- Crushed Stone Ballast
- Processed Gravel Ballast
- Pit Run Gravel Ballast
- None

POWER TAMPING

BANKWIDENING

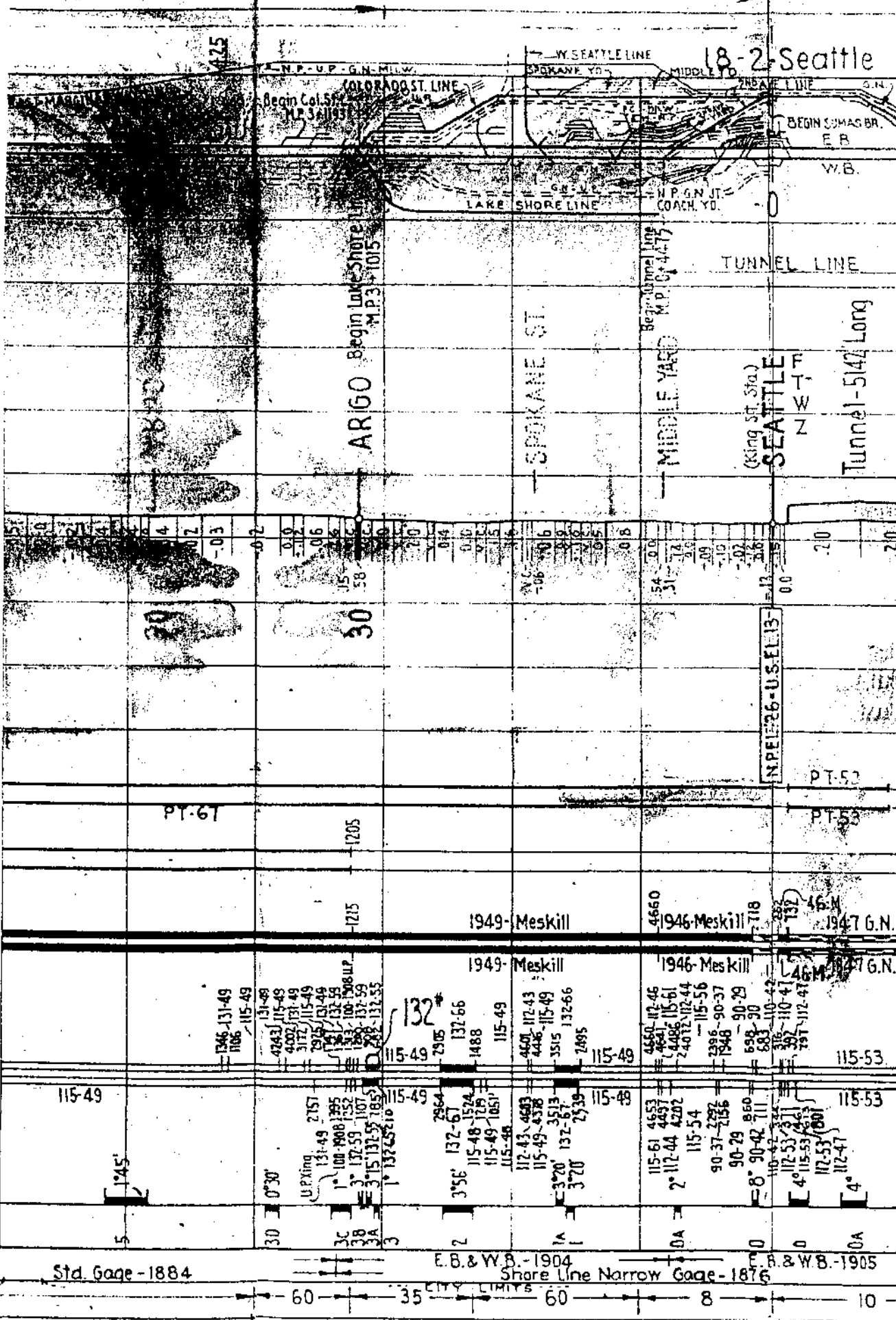
BALLAST

RAIL { Conventional Joints Continuous Welded

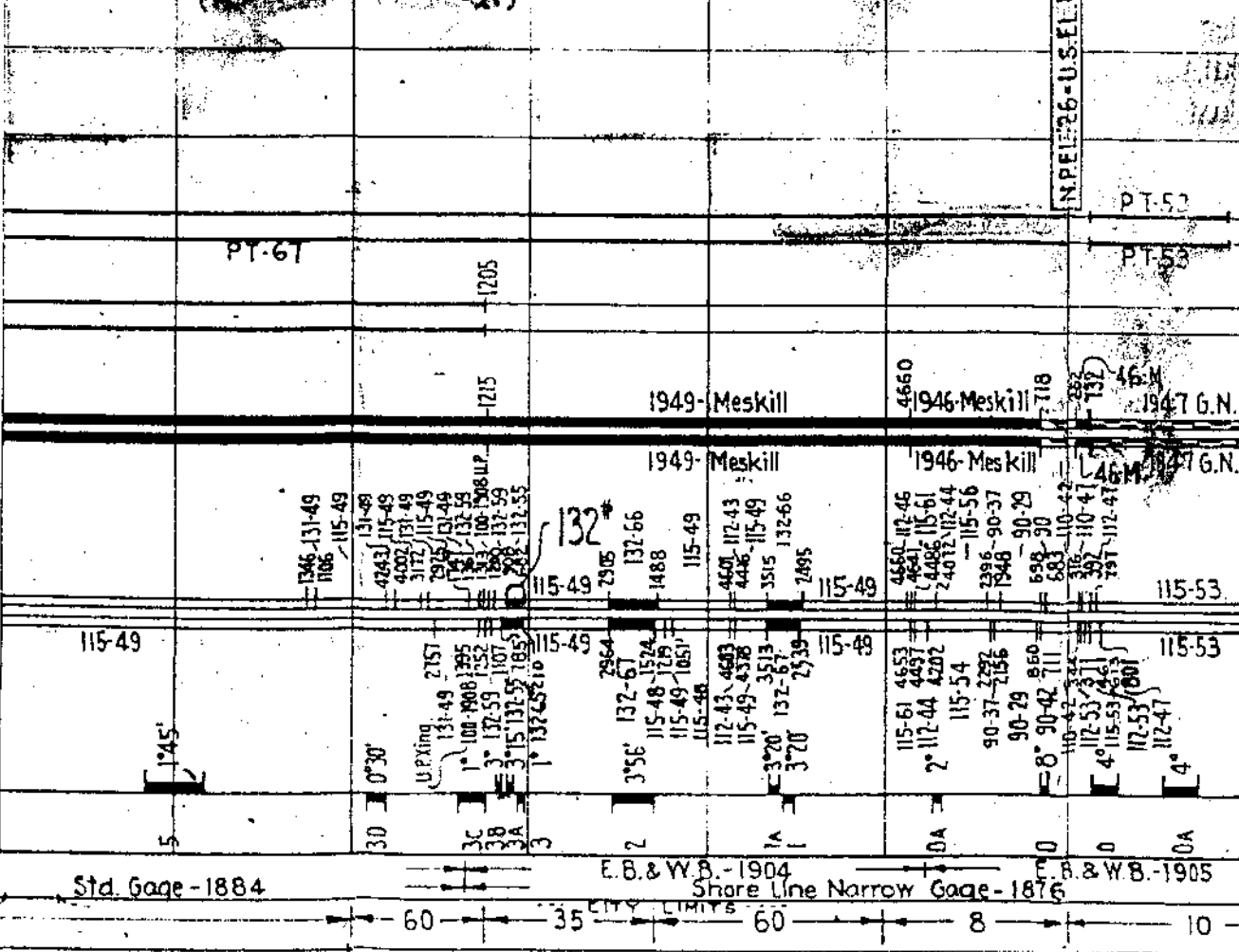
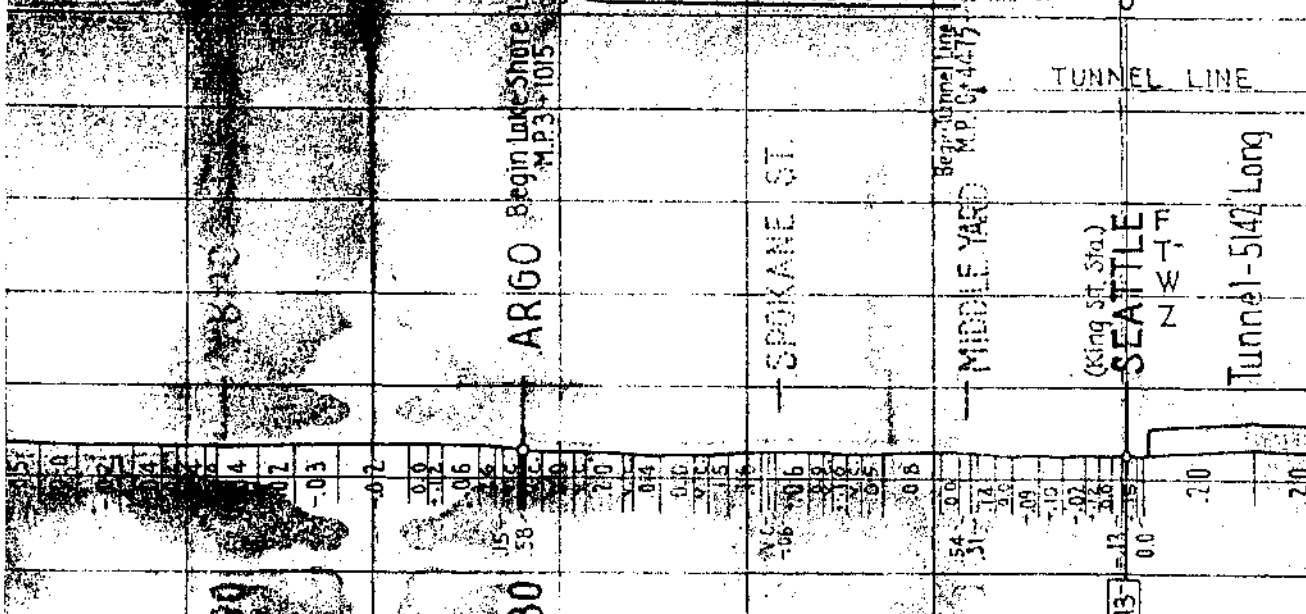
CURVES & BRIDGES

YEAR CONSTRUCTED

RESTRICTED SPEED ZONES



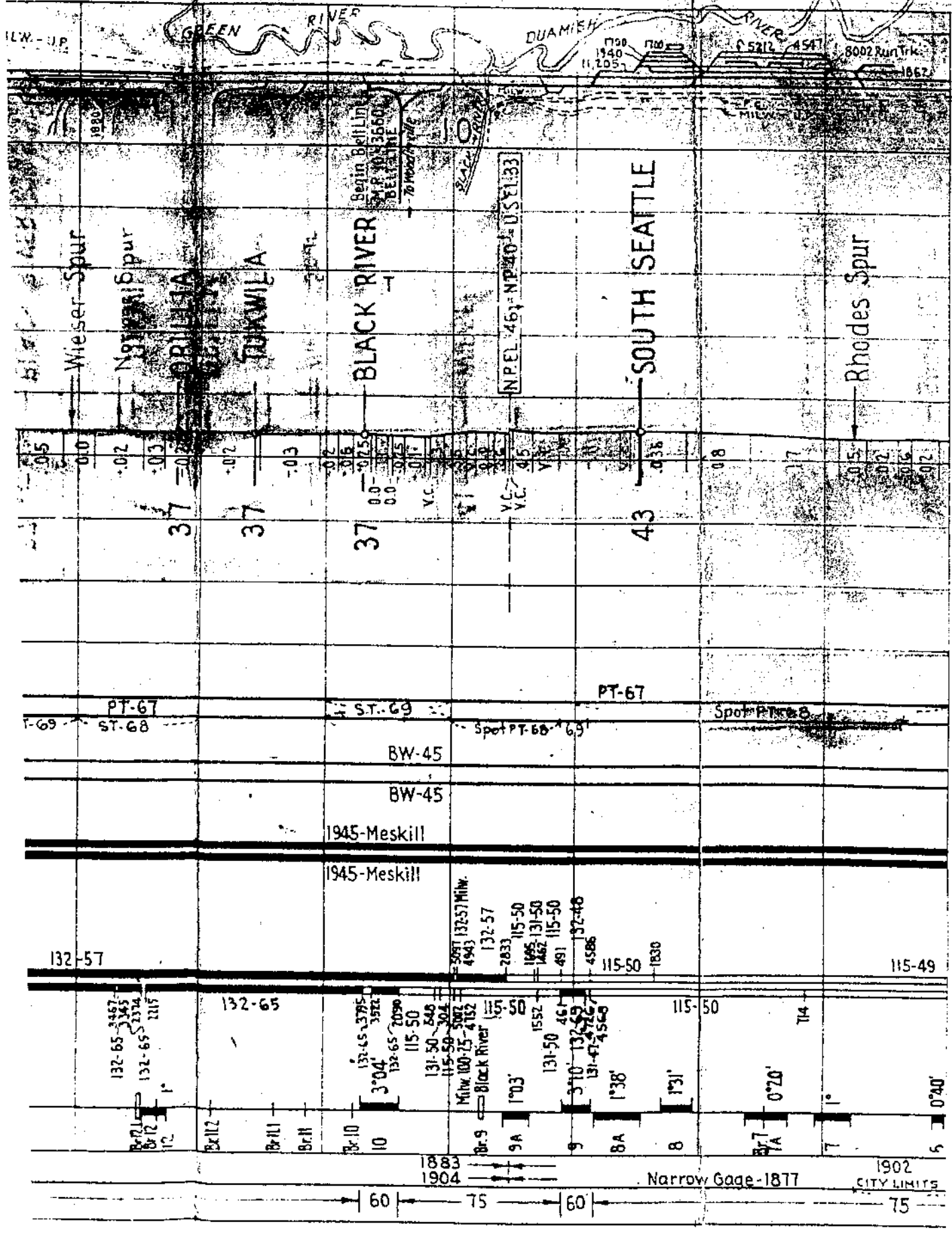
18-2 Seattle
N.P. & W.B. MILW.
COLORADO ST. LINE
W. SEATTLE LINE
SPOKANE YD.
MIDDLE YD.
TUNNEL LINE
G.N.
BEGIN COMAS BR. E.B.
W.B.
BEGIN COACH YD.
N.P. & W.B. COACH YD.



Std. Gage - 1884
E.B. & W.B. - 1904
Shore Line Narrow Gage - 1876
E.B. & W.B. - 1905
CITY LIMITS
60 35 60 8 10

(38 FRK. MI.)

18-9-Kent



Wieser Spur

Nogahalli Spur

BRILLIA

TUKWILA

BLACK RIVER

SOUTH SEATTLE

Rhodes Spur

-05	00	-02	-03	-02	-03	02	-016	00	00	V.C.	01	02	V.C.	V.C.	05	038	08	17	015	02	006	02
				37	37			37								43						

PT-67 ST-68 Spot PT-68-69
 ST-69 ST-68 Spot PT-68-69

BW-45
 BW-45

1945-Meskill
 1945-Meskill

132-57

132-65

3001 13257 MIN.
 4943 132-57
 2833 115-50
 1995 131-50
 1462 115-50
 491 132-40
 4586 115-50
 1830

115-49

132-65 3467
 132-65 3374
 132-65 3115

132-65 3795
 132-65 3522
 132-65 2090
 115-50
 131-50 348
 115-50 304
 115-50 307

MHW 100-75-4152
 Black River
 107
 1552
 131-50 461
 370 132-62
 131-47 4566

115-50

114

Br 12

Br 12

Br 11

Br 11

Br 10

10

Br 9

9A

9

8A

8

Br 7

7A

7

5

1883
 1904

Narrow Gage-1877

1902

CITY LIMITS

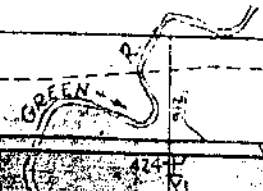
60

75

60

75

MILW - U.P.



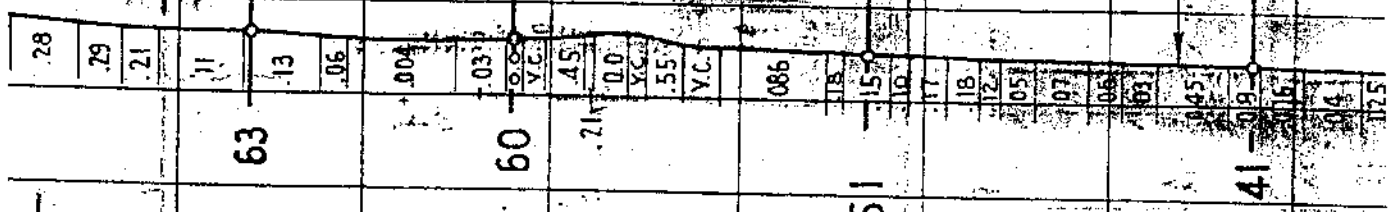
CHRISTOPHER

THOMAS

KENT

WIESER

Pioneer Sand Spur



63

60

51

41

65

1950 PT-63
PT-69
67 Br.17.2 PT-67 Br.17.1
ST-69 ST-68 ST-69/68
Spot PT-68
BW-45
Spot PT-68
ST-68
Spot P

1945-Meskill

1945-Meskill

132-65

132-57

4387
Green River
132-65
2545

2319/17-45
212/132-57
1938/112-45
1734/112-57
1467-112-57
132-57

4651 132-57
454

132-65

0°30'30"

Br.19.1

Br.19

Br.18.1

Br.18

Br.17.3

Br.17.2

Br.17.1

Br.17

Br.16

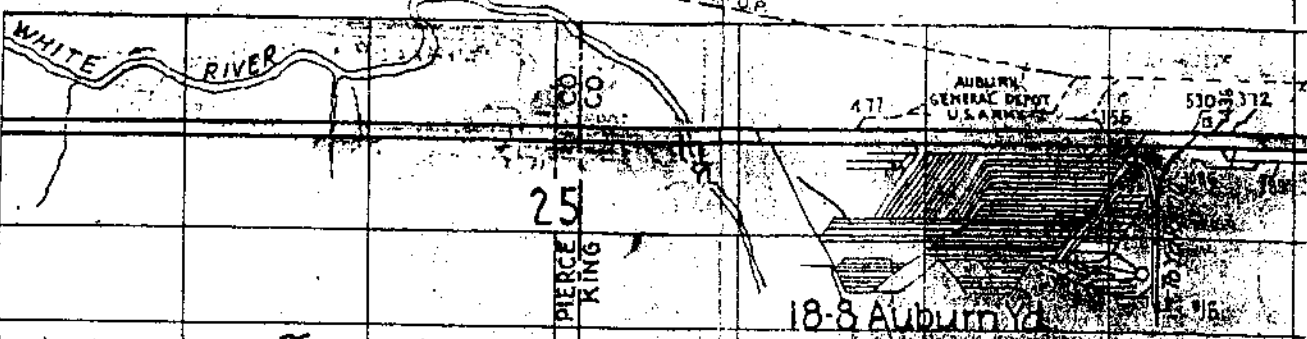
16A

16

15

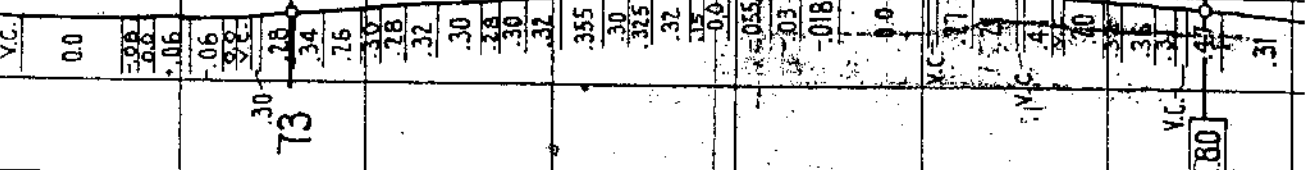
Br.14

MILW.-U.P. 18-7-Auburn MILW.-U.P.

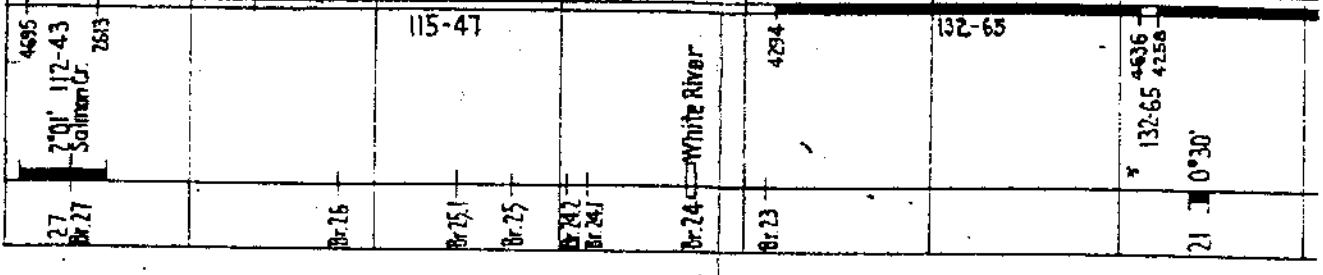
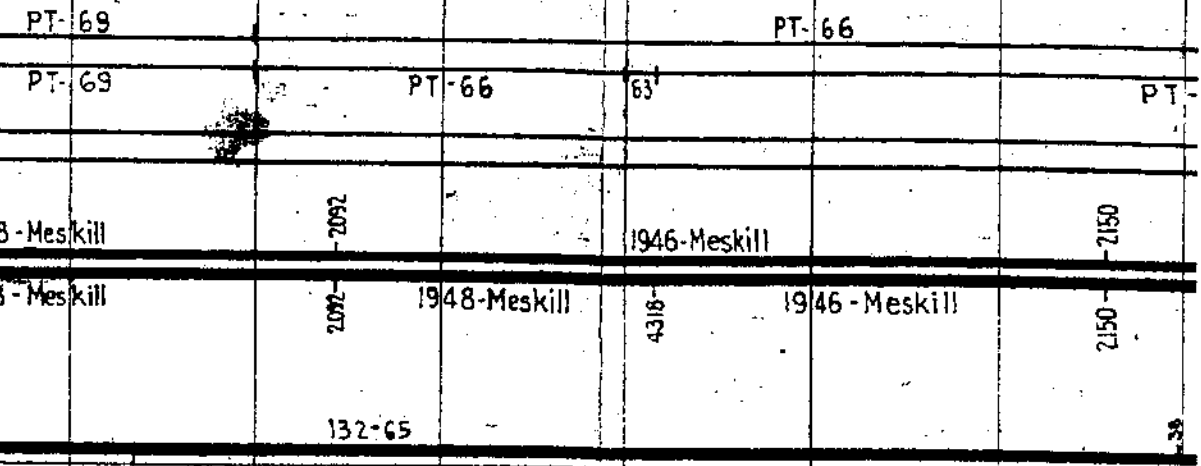


DIERINGER

AUBURN

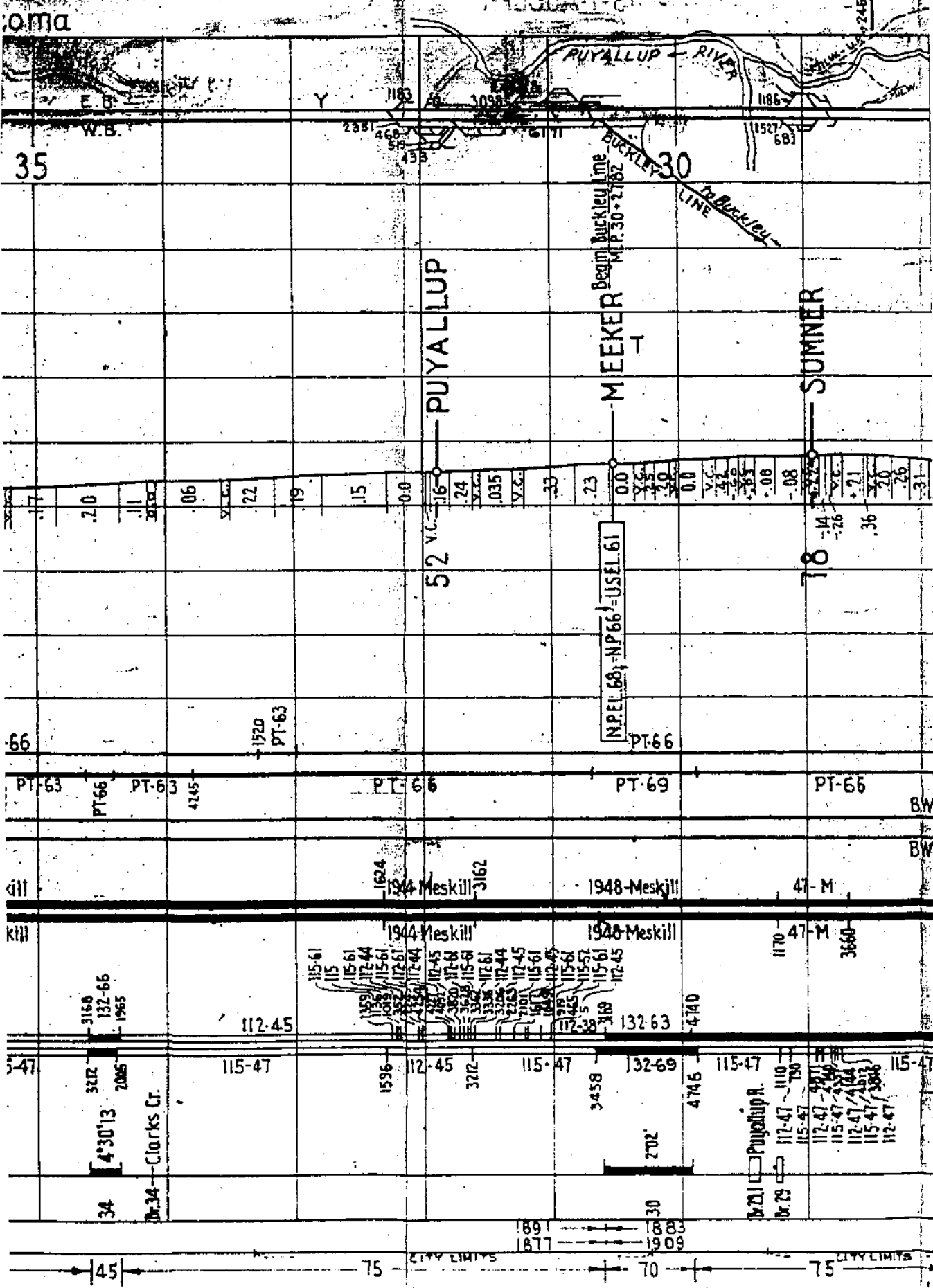


U.S.I.C. 80



1909 - - - - 1904

CITY LIMITS



35

66

547

PUYALLUP

MEEKER

SUMNER

PUYALLUP RIVER

BUCKLEY LINE
M.P. 30-2782

1944 Meskill

1948-Meskill

47-M

1944 Meskill

1948-Meskill

47-M

112-45

115-47

132-69

115-47

115-47

34

Clark's Cr.

115-47

1596

3272

112-45

115-47

3458

2702

132-69

4746

115-47

34

Clark's Cr.

115-47

1596

3272

112-45

115-47

3458

2702

132-69

4746

115-47

45

45

75

75

70

75

75

75

3272

2086

115-47

1596

3272

112-45

115-47

3458

2702

132-69

4746

115-47

3166

132-66

1965

112-45

3272

112-45

115-47

3458

2702

132-63

4740

1170

3166

132-66

1965

112-45

3272

112-45

115-47

3458

2702

132-63

4740

1170

PT-63

PT-66

PT-63

4245

PT-66

PT-66

PT-69

PT-66

PT-69

PT-66

PT-66

BW

PT-63

PT-66

PT-63

4245

PT-66

PT-66

PT-69

PT-66

PT-69

PT-66

PT-66

BW

PT-63

PT-66

PT-63

4245

PT-66

PT-66

PT-69

PT-66

PT-69

PT-66

PT-66

BW

PT-63

PT-66

PT-63

4245

PT-66

PT-66

PT-69

PT-66

PT-69

PT-66

PT-66

BW

PT-63

PT-66

PT-63

4245

PT-66

PT-66

PT-69

PT-66

PT-69

PT-66

PT-66

BW

PT-63

PT-66

PT-63

4245

PT-66

PT-66

PT-69

PT-66

PT-69

PT-66

PT-66

BW

PT-63

PT-66

PT-63

4245

PT-66

PT-66

PT-69

PT-66

PT-69

PT-66

PT-66

BW

PT-63

PT-66

PT-63

4245

PT-66

PT-66

PT-69

PT-66

PT-69

PT-66

PT-66

BW

PT-63

PT-66

PT-63

4245

PT-66

PT-66

PT-69

PT-66

PT-69

PT-66

PT-66

BW

PT-63

PT-66

PT-63

4245

PT-66

PT-66

PT-69

PT-66

PT-69

PT-66

PT-66

BW

PT-63

PT-66

PT-63

4245

PT-66

PT-66

PT-69

PT-66

PT-69

PT-66

PT-66

BW

PT-63

PT-66

PT-63

4245

PT-66

PT-66

PT-69

PT-66

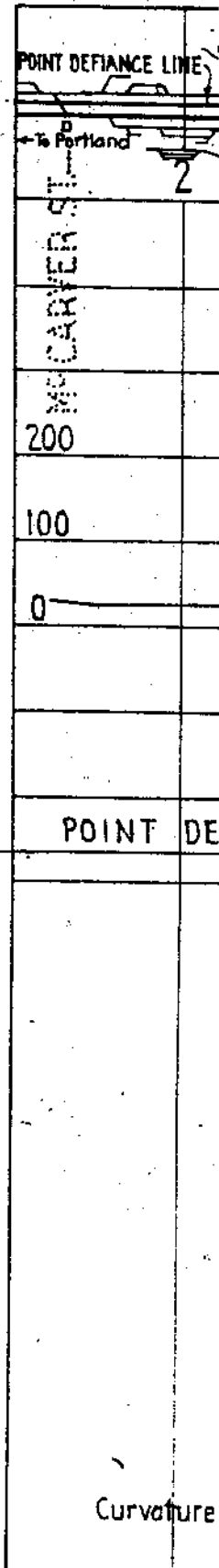
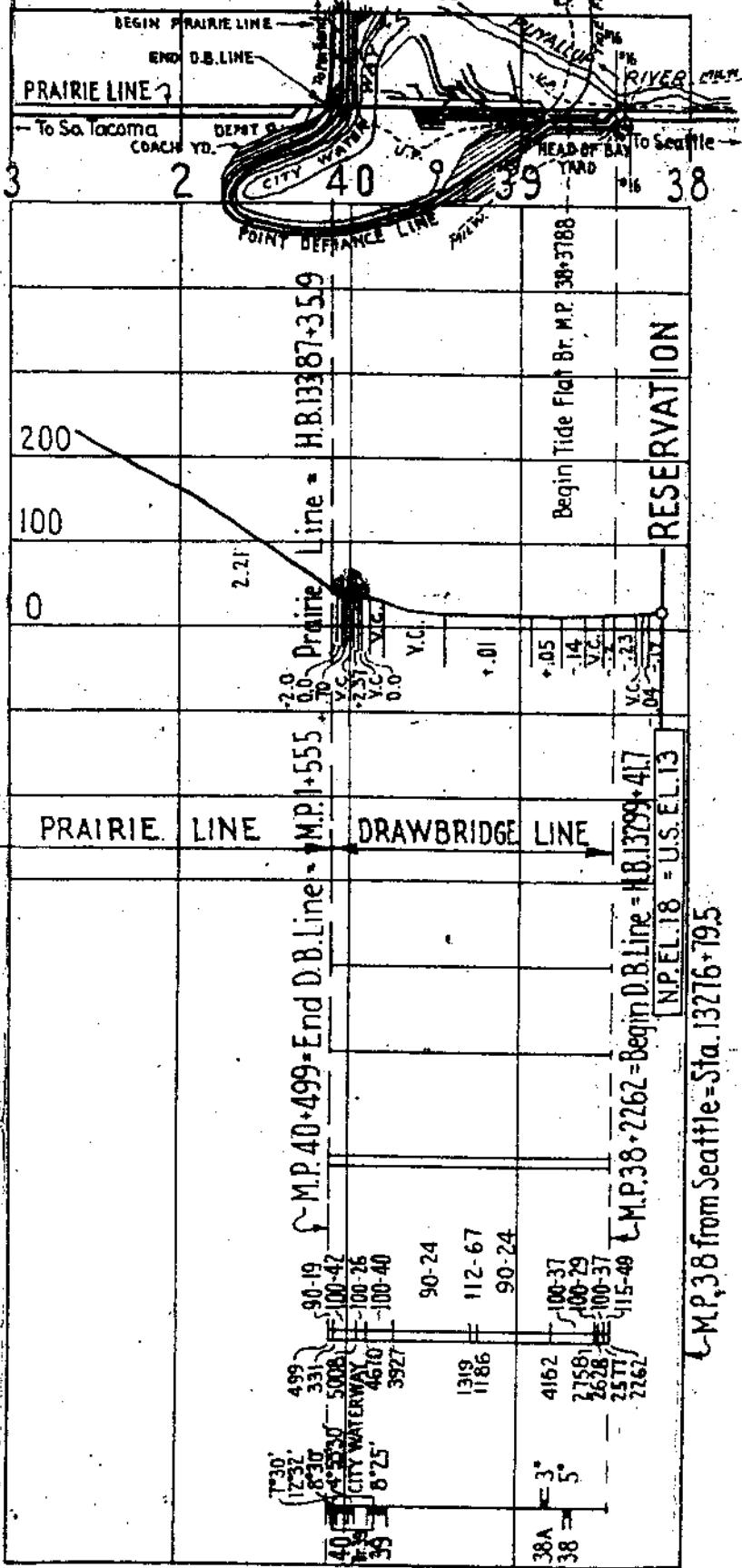
PT-69

PT-66

PT-66

BW

18-1-Tacoma



CITY LIMITS R 40 60 40

Curvature