



CONDENSED PROFILE AND TRACK CHART

TACOMA DIV. BRANCH LINES

WILLAPA HARBOR LINE (21)
(SOUTH BEND BR.)

YACOLT BR. (22)

HOR. SCALE: 1 Inch = 2 Miles

VERT. " " = 100 Feet

Office of Chief Engineer
St. Paul, Minn. July 1922.

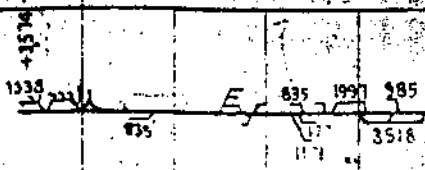
Revised Jan. 1, 1970.

SOUTH BEND - N.P.E.L.33-USEL.9

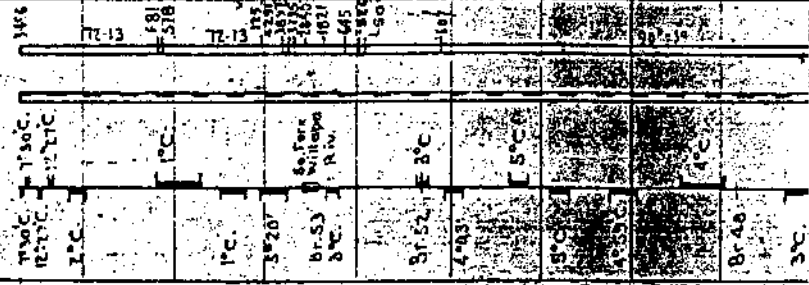
Rayonier Spur

RAYMOND 33.31

WILLAPA

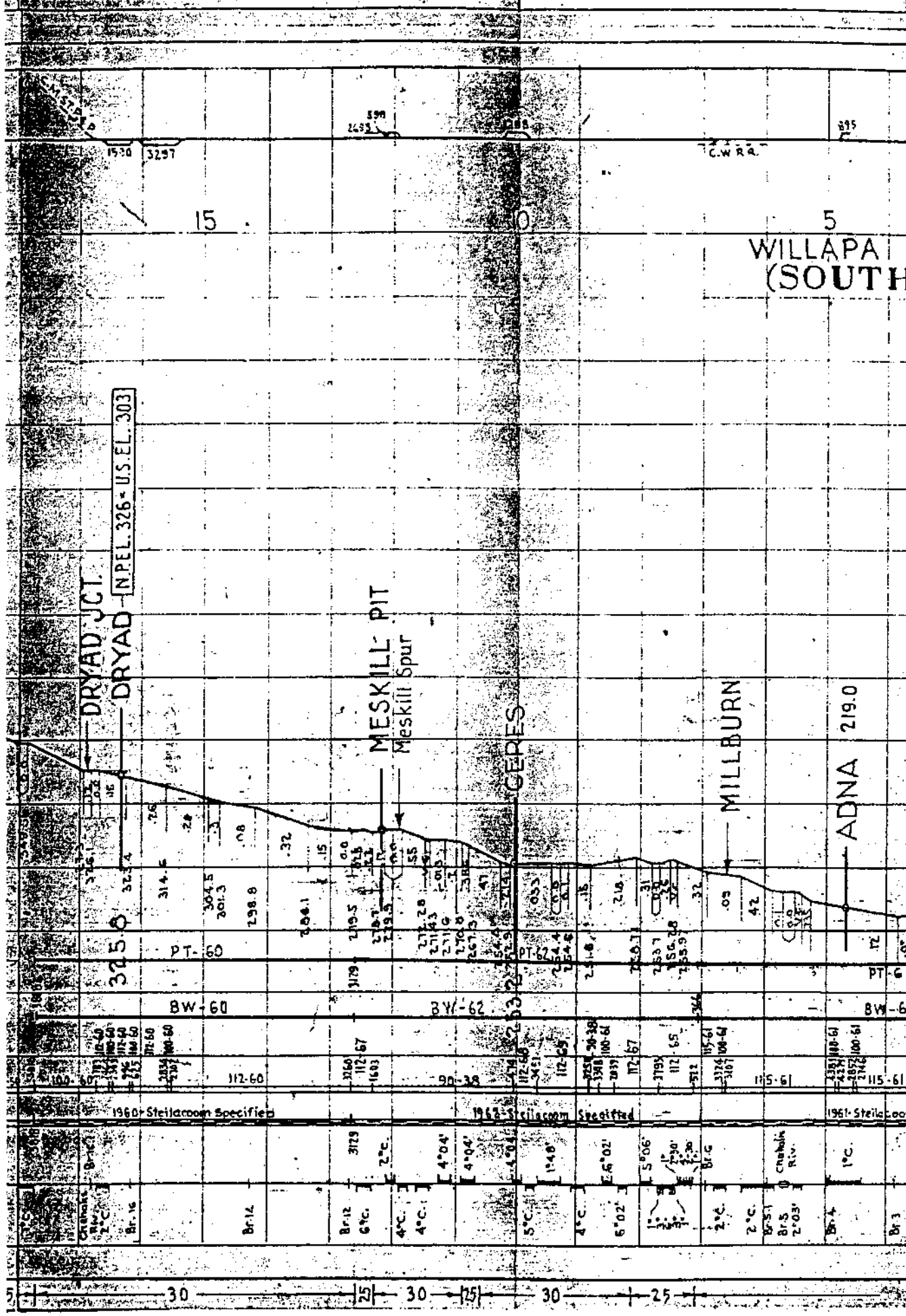


00
100
200
300



1893

25 30



DRYAD JCT.
 DRYAD NPEL. 326 - U.S. EL. 303

MESKILL PIT
 Meskitt Spur

CERES

MILLBURN

ADNA 219.0

WILLAPAI
 (SOUTH)

1961 Steelton Specified

1961 Steelton Specified

1961 Steelton

30	25	30	25	30	25
Br. 12 6°C	Br. 12 6°C	Br. 12 6°C	Br. 12 6°C	Br. 12 6°C	Br. 12 6°C
4°C	4°C	4°C	4°C	4°C	4°C
4°C	4°C	4°C	4°C	4°C	4°C
5°C	5°C	5°C	5°C	5°C	5°C
4°C	4°C	4°C	4°C	4°C	4°C
6°02'	6°02'	6°02'	6°02'	6°02'	6°02'
5°06'	5°06'	5°06'	5°06'	5°06'	5°06'
2°C	2°C	2°C	2°C	2°C	2°C
2°C	2°C	2°C	2°C	2°C	2°C
Br. 5 2°03'	Br. 5 2°03'	Br. 5 2°03'	Br. 5 2°03'	Br. 5 2°03'	Br. 5 2°03'
Br. 4 1°C	Br. 4 1°C	Br. 4 1°C	Br. 4 1°C	Br. 4 1°C	Br. 4 1°C
Br. 3	Br. 3	Br. 3	Br. 3	Br. 3	Br. 3

HARBOR LINE
(BEND BR.)

2157

LITTELL 213.4

2448 98-53
115-61

Specified

Br. 25
R.V.
2-C

C.W. RR Xing

CHEHALIS JCT.

N.P.E.L. 204-N.P. 207-U.S.E.L. 181

Conn. with M.L. M.P. 58-3813-M.P.D.-III

500
400
300
200

5'02"

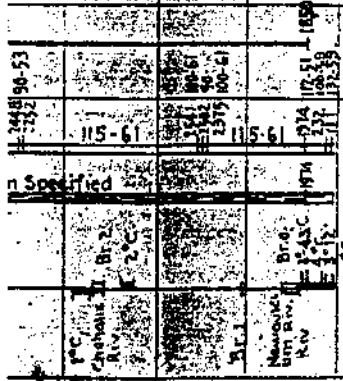
1893

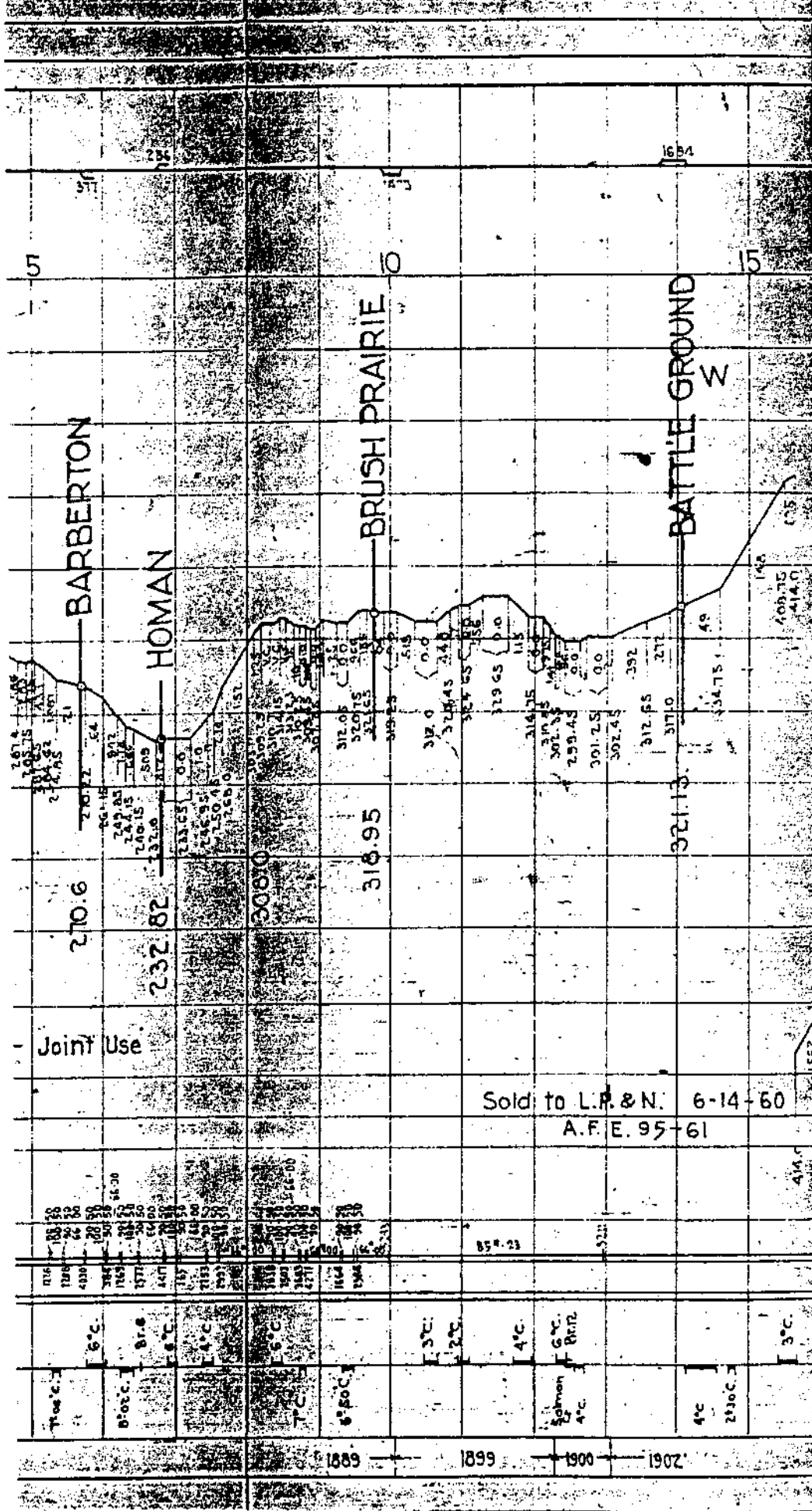
TO TACOMA

PORTLAND

31/2

192





Sold to L.P. & N. 6-14-60
A.F.E. 95-61

1889 1899 1900 1902

