



CONDENSED PROFILE AND TRACK CHART

ST. PAUL DIV. (5) BRANCH LINES

FERGUS FALLS BR.

FAIRVIEW BR.

HOR. SCALE: 1 Inch = 2 Miles

VERT. " " 1 " = 100 Feet

Office of Chief Engineer
St. Paul, Minn. July 1922

Revised Jan. 1, 1970

Track Sections
Schedule of Tie Renewal Gang

Track Diagram

FALLS BR.

WARREN JCT.

N.P. EL. 1954 TUS. EL. 1354

1300

1300

PT-59

117-59

1251

1992

1889

LEGEND

- NAME OF STATION
- Yards
- W Water
- Z Scales
- T Turntable or Wye
- Passing Tracks

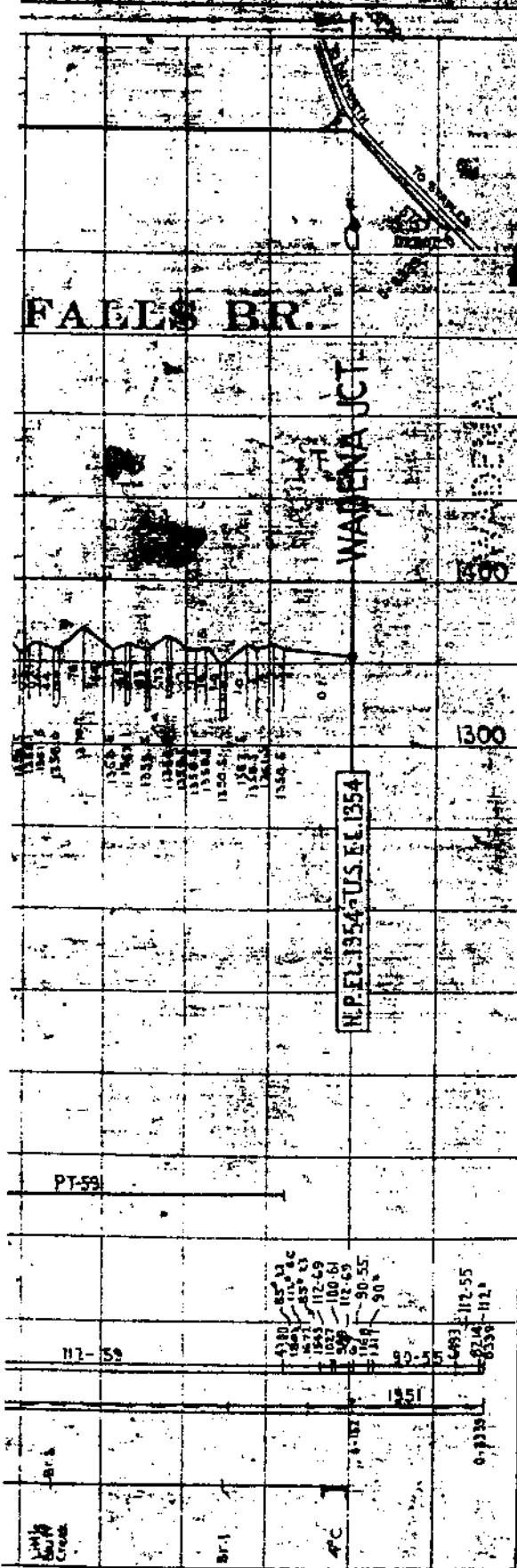
- RAIL
- BALLAST
- GRAVEL
- OTHER

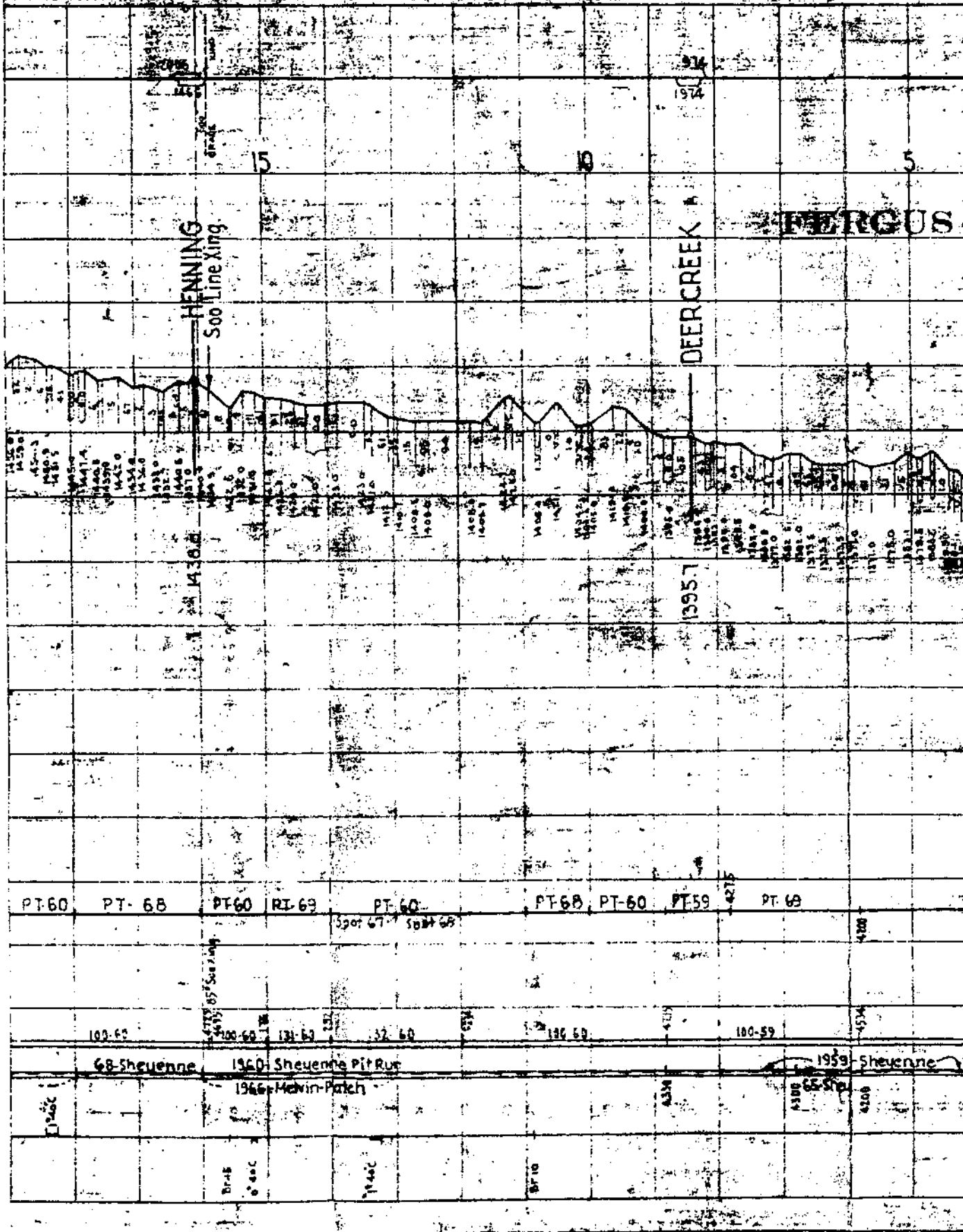
Rail
Ballast

Curvature & Bridges

Year Constructed

Restricted Speed Zones





HENNING
Soo Line King

DEERCREEK

FERGUS

15

10

5

1957

PT-60

PT-68

PT-60

RI-69

PT-60

PT-68

PT-60

PT-59

PT-69

Spot 67 Spot 68

100-62

100-60

131-62

132-60

136-60

100-59

68-Sheuenne

1960-Sheuenne Pt Rur

1966-Mavin Patch

1959-Sheuenne

4240

Br-4
4240

4240

Br-10

4334

4308

4208

4200

4234

4275

1974

49-Battle Lake

1967 (53 TRK (M))

2106

301

30

25

20

BATTLE LAKE

CLITHERAL

MINING

1356.7

1348.0

1303

ST-69

PT-68

Spot PT-69

Spot PT-69

90-53

90-53

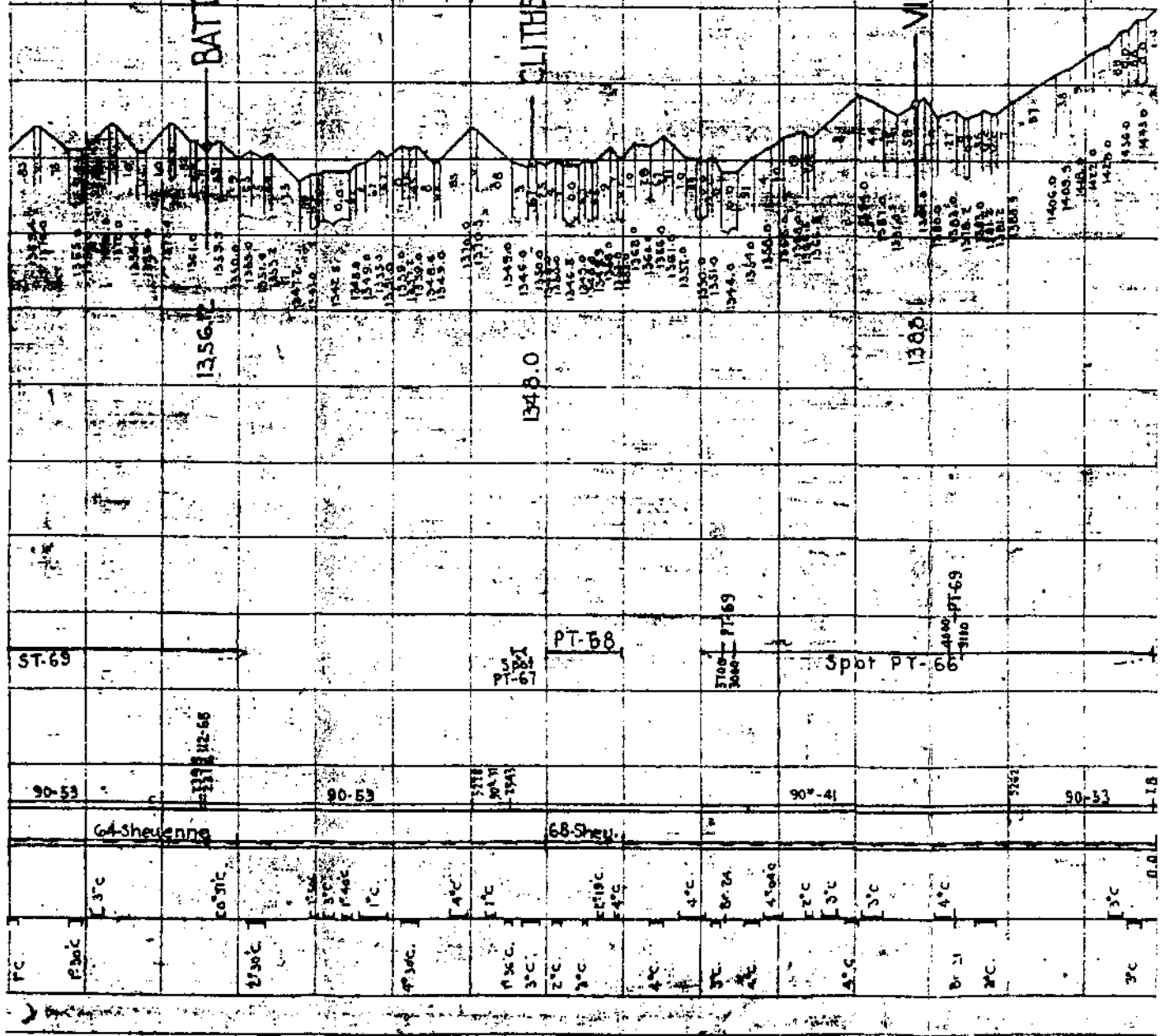
90-41

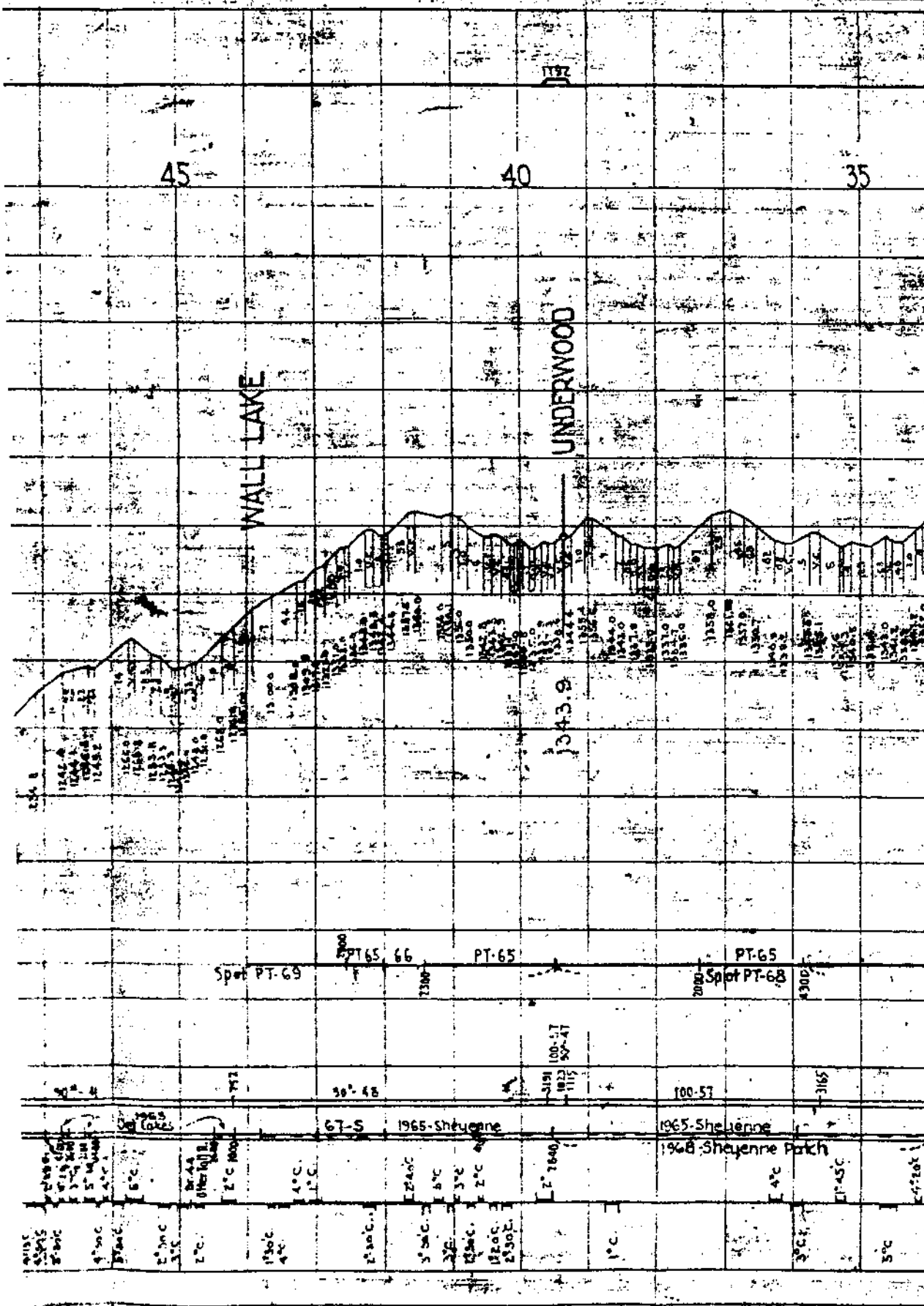
90-53

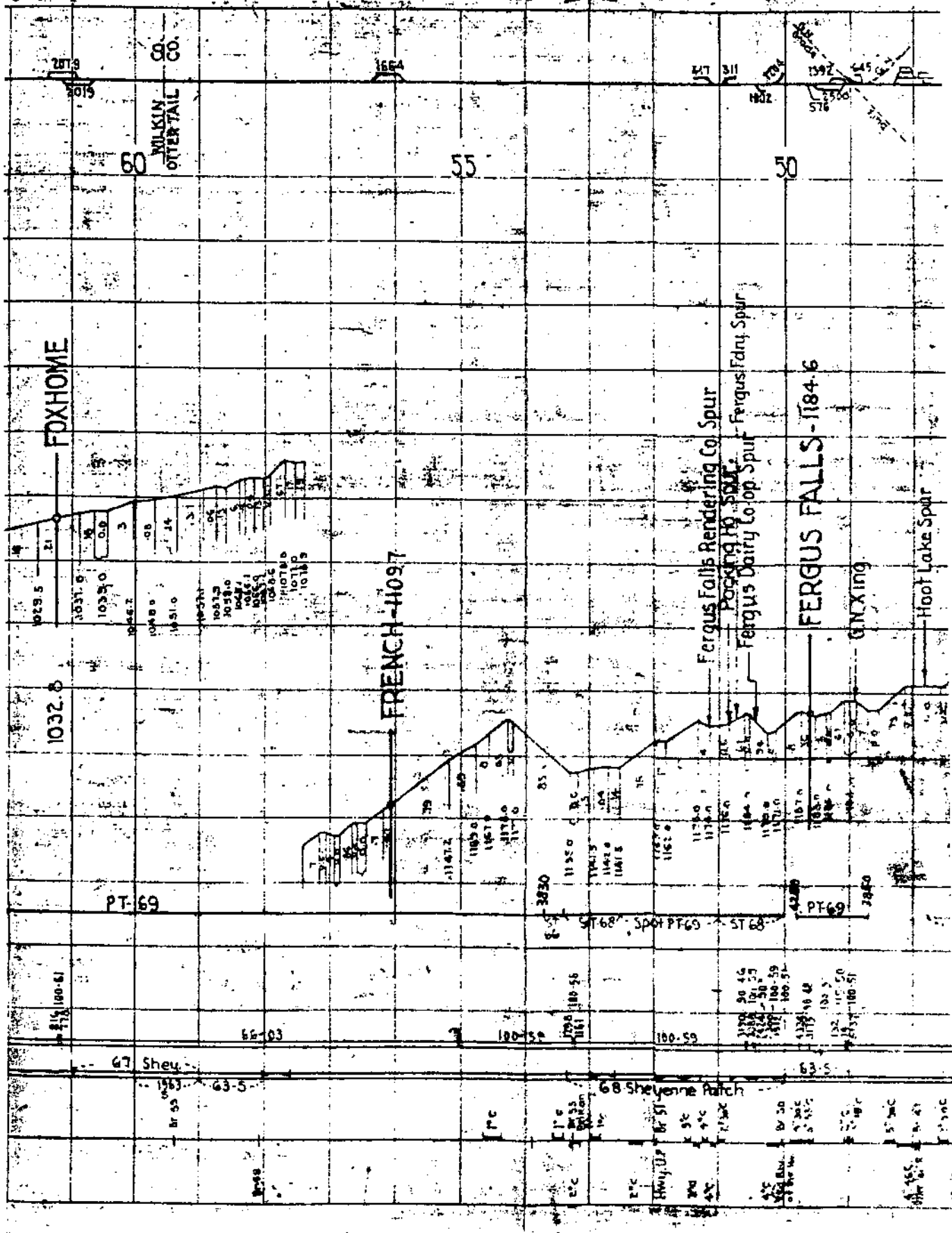
64 Shevings

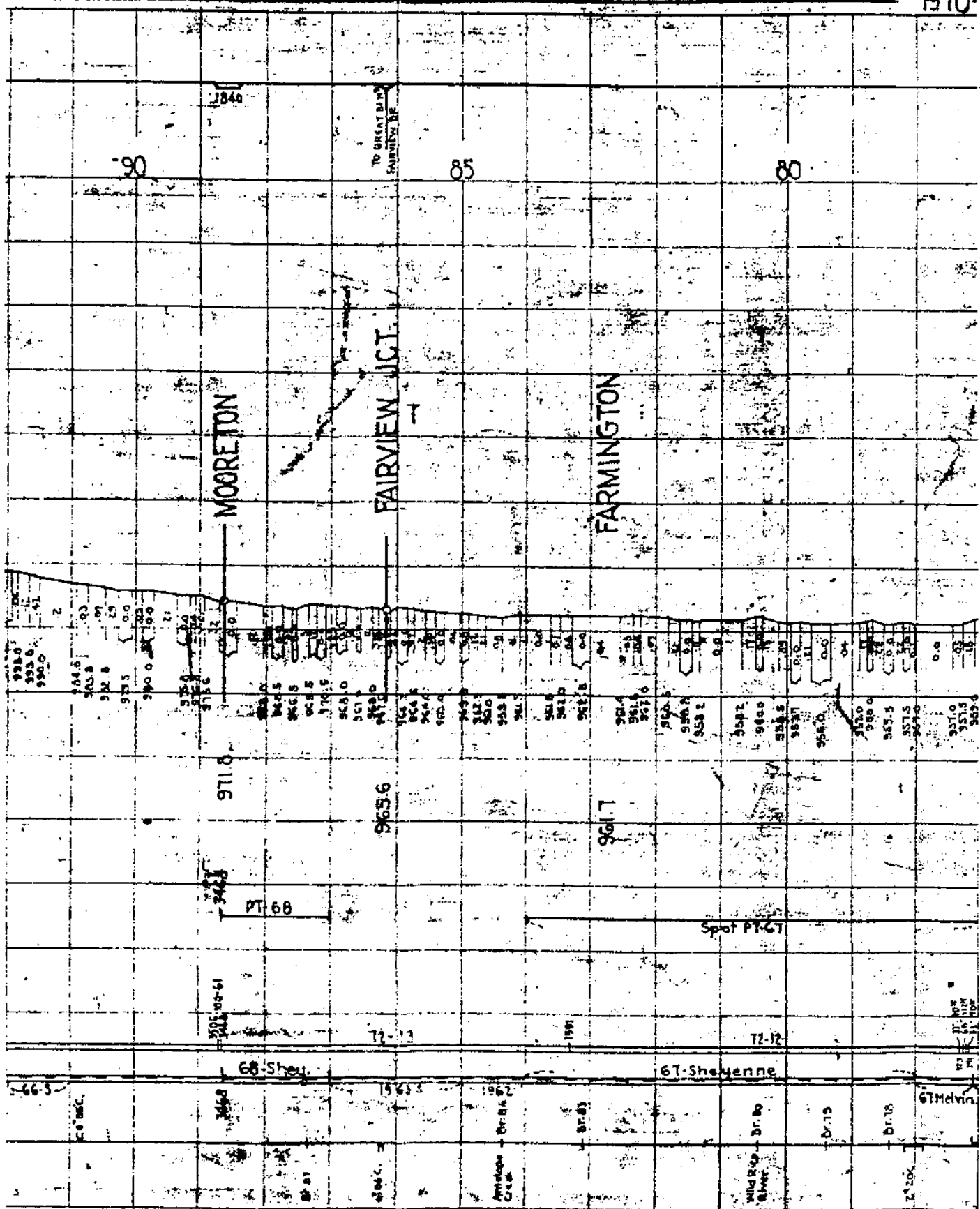
68 Shev.

1°C	1.3°C	2.3°C	1.3°C	1.4°C	1.1°C	3°C	2°C	3°C	4°C	3°C	3°C	4°C	3°C	1.4°C	2°C	1.3°C
1°C	1.3°C	2.3°C	1.3°C	1.4°C	1.1°C	3°C	2°C	3°C	4°C	3°C	3°C	4°C	3°C	1.4°C	2°C	1.3°C









10M.P.H. (FAS 970)

1883

1882

SARGENT
RICHLAND
CO.

105

100

95

WYNDMERE
500 Line Xing

BARNEY

1062.9	.05
1061.9	.11
1058.9	.00
1057.4	.15
1055.4	.31
1053.4	.00
1052.4	.14
1051.4	.00
1050.9	.07
1049.4	.33
1048.4	.00
1047.4	.00
1046.9	.00
1045.4	.00
1044.4	.00
1043.4	.00
1042.4	.00
1041.4	.00
1040.4	.00
1039.4	.00
1038.4	.00
1037.4	.00
1036.4	.00
1035.4	.00
1034.4	.00
1033.4	.00
1032.4	.00
1031.4	.00
1030.4	.00
1029.4	.00
1028.4	.00
1027.4	.00
1026.4	.00
1025.4	.00
1024.4	.00
1023.4	.00
1022.4	.00
1021.4	.00
1020.4	.00
1019.4	.00
1018.4	.00
1017.4	.00
1016.4	.00
1015.4	.00
1014.4	.00
1013.4	.00
1012.4	.00
1011.4	.00
1010.4	.00
1009.4	.00
1008.4	.00
1007.4	.00
1006.4	.00
1005.4	.00
1004.4	.00
1003.4	.00
1002.4	.00
1001.4	.00
1000.4	.00

1060.9

1035.3

PT-68

68-Shey

72-13

1063.4	.02
1062.9	.02
1061.4	.00
1060.9	.01

Dr 104

Dr 103

Dr 102

66-5

Dr 101

Dr 100

Dr 99

Dr 98

1005

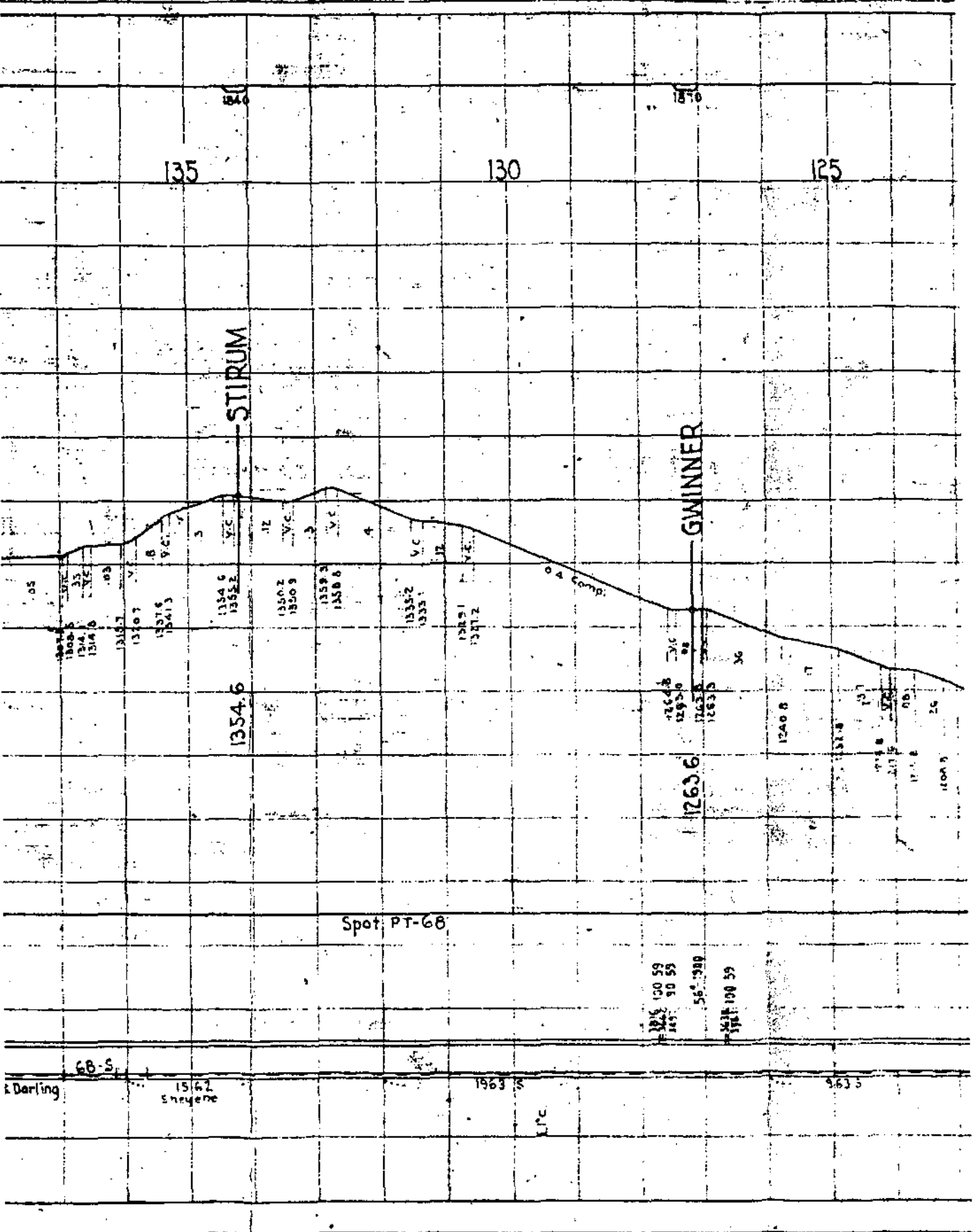
135

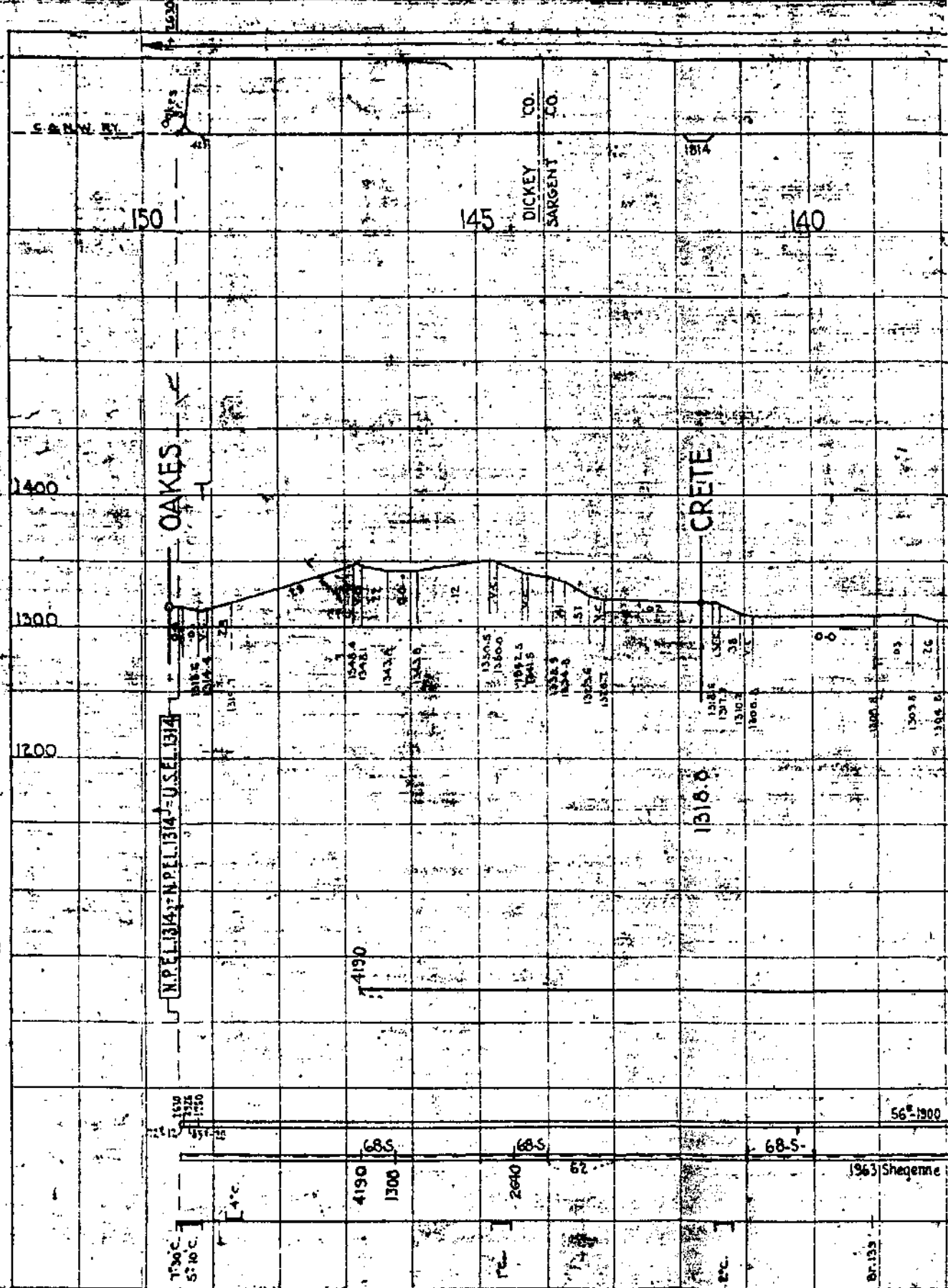
130

125

STIRUM

GWINNER





150

145

140

OAKES

CRETE

DICKY CO.
SARGENT CO.

N.P. 1314 N.P. 1314 USE 1314

1318.0

1300

4190

2610

68.5

1963 Sheganne

1900 10 M.P.H. (S.H.#1)

1400

1300

1200

56-1900

1310
1312
1314

4190
1300

2610
62

68.5

67.135

1312
1314
1316

1318
1320
1322

1324
1326
1328

1330
1332
1334

1336
1338
1340

1342
1344
1346

1348
1350
1352

1354
1356
1358

1360
1362
1364

1366
1368
1370

1372
1374
1376

1378
1380
1382

S.P.N.W. RY.

1314

1314

1312
1314
1316

1318
1320
1322

1324
1326
1328

1330
1332
1334

1336
1338
1340

1342
1344
1346

1348
1350
1352

1354
1356
1358

1360
1362
1364

1366
1368
1370

1372
1374
1376

1378
1380
1382

51-Wahpeton

(3 Trk. Mi)

FAIRVIEW BR.

GREAT BEND

KEYSTONE

MATHEWS

FARMEN-UCT

N.P.E.L. 977-U.S.E.L. 978

975.54

968.1

N.P.E.L. 966-U.S.E.L. 968

Spot PT-68

Spot PT-68

Spot PT-68

1967-Sheyenne

65-Sheyenne

1887

1884

15

