



# CONDENSED PROFILE AND TRACK CHART

ROCKY MTN. DIV. BRANCH LINES

CAMP CREEK BR. (9)

RED BLUFF BR. (10)

RUBY VALLEY BR. (11)

PARK BR. (8)

HOR. SCALE: 1 Inch = 2 Miles

VERT. " " " = 100 Feet

Office of Chief Engineer  
St. Paul, Minn. July 1921

Revised Jan. 1, 1970.

Track Sections

Track Diagram

Mile Post

CREEK BR.

9<sup>TH</sup>

4700

4600

4500

4400

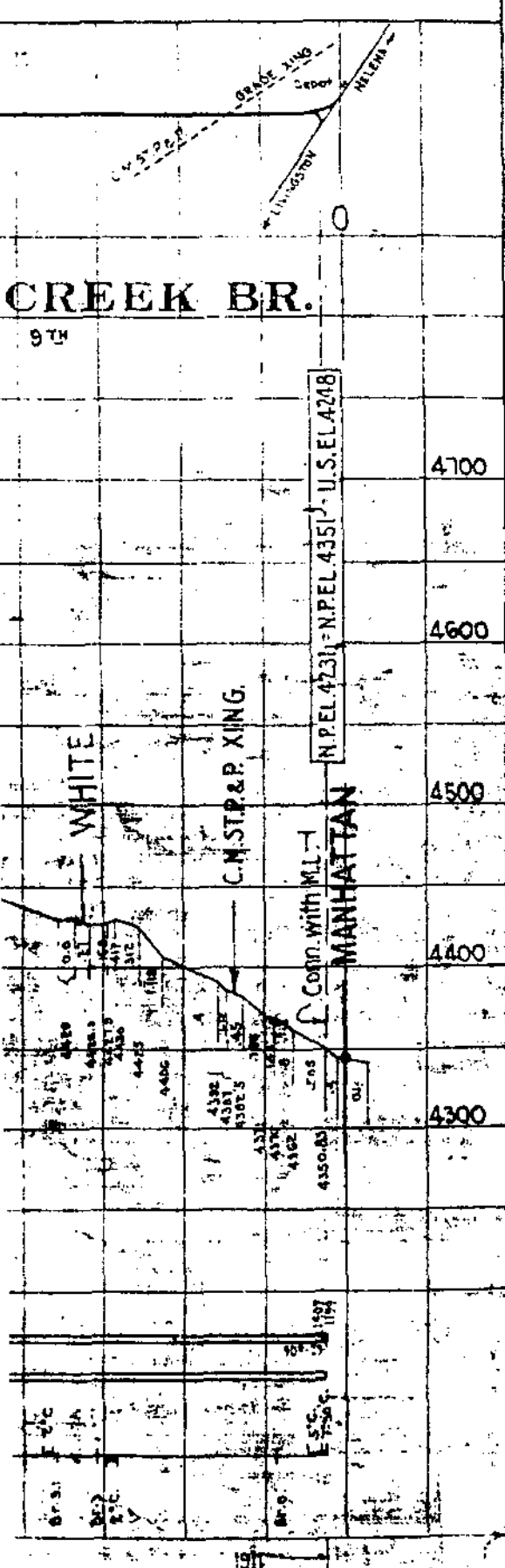
4300

N.P.E.L. 4231 N.P.E.L. 4351 U.S. E.L. 4248

C.M. ST.P.&P. XING.

MANHATTAN

Contn. with M.I.T.



LEGEND

- NAME OF STATION
- Passing Tracks
- Yards
- Water
- Scales
- Turntable or Wye
- RAIL
- BALLAST
- OTHER

Rail

Ballast

Curvature & Bridges

Year Constructed

1911

1200

115

110

655

5

10

5

CAMP

ARNOLD

ANCENEY  
Z

AMSTERDAM

BUELL

4900

4800

4700

4600

N.P. EL. 4870 = U.S. 4763

4655.6

4531.0

4457.28

1106

F 6-C

I 4-C

Br 5

Br 3

Br 2

Br 1

U.C.

2<sup>nd</sup> P.M.

Br 4

I P.C.

2<sup>nd</sup> P.M.

Br 4

I P.C.

Comp. C.

Br 3

Comp. B.

Br 4

I P.C.

Comp. A.

Br 3

Br 1

I P.C.

Br 2

Comp. B.

Br 3

Br 4

I P.C.

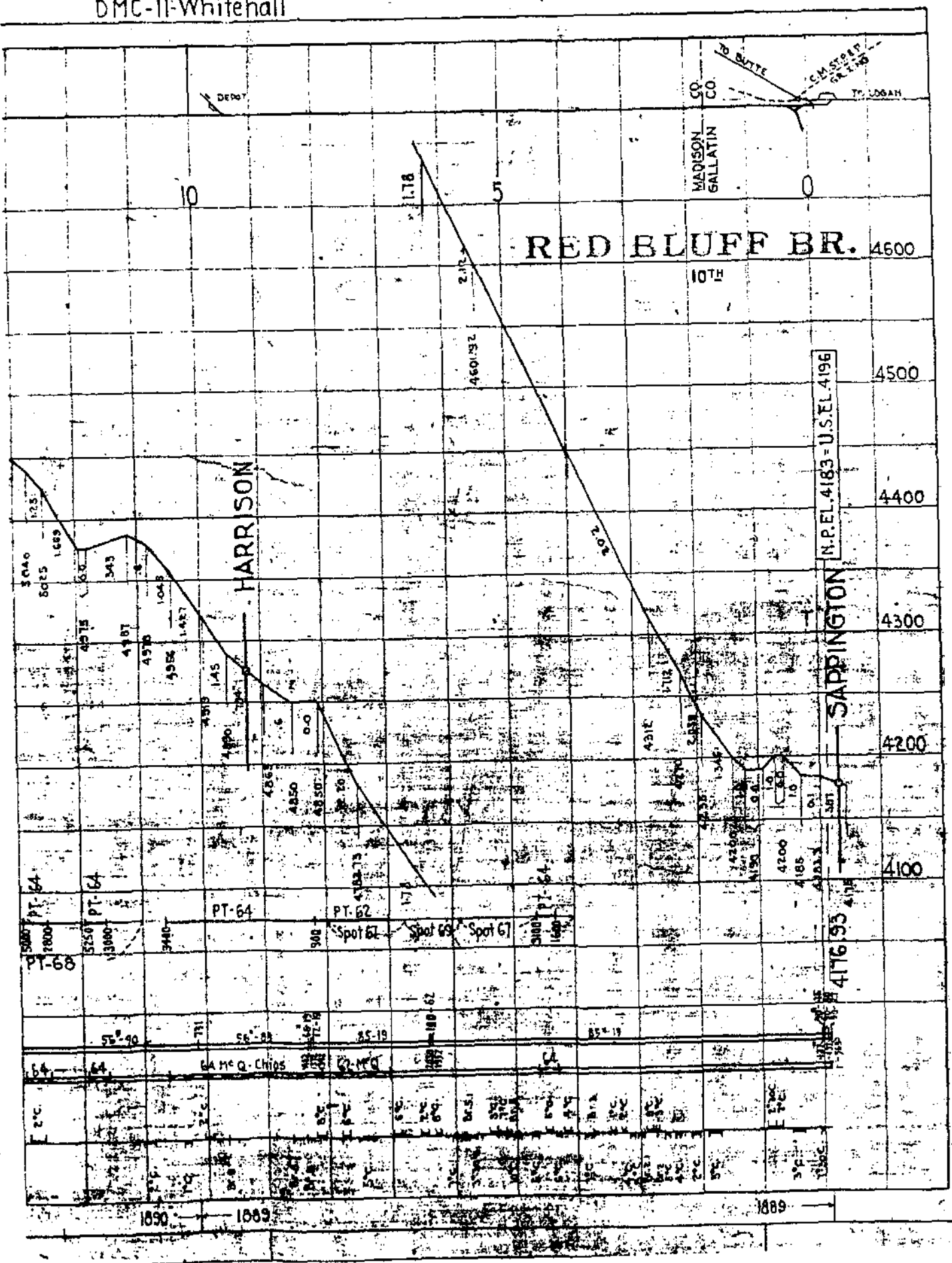
Br 3

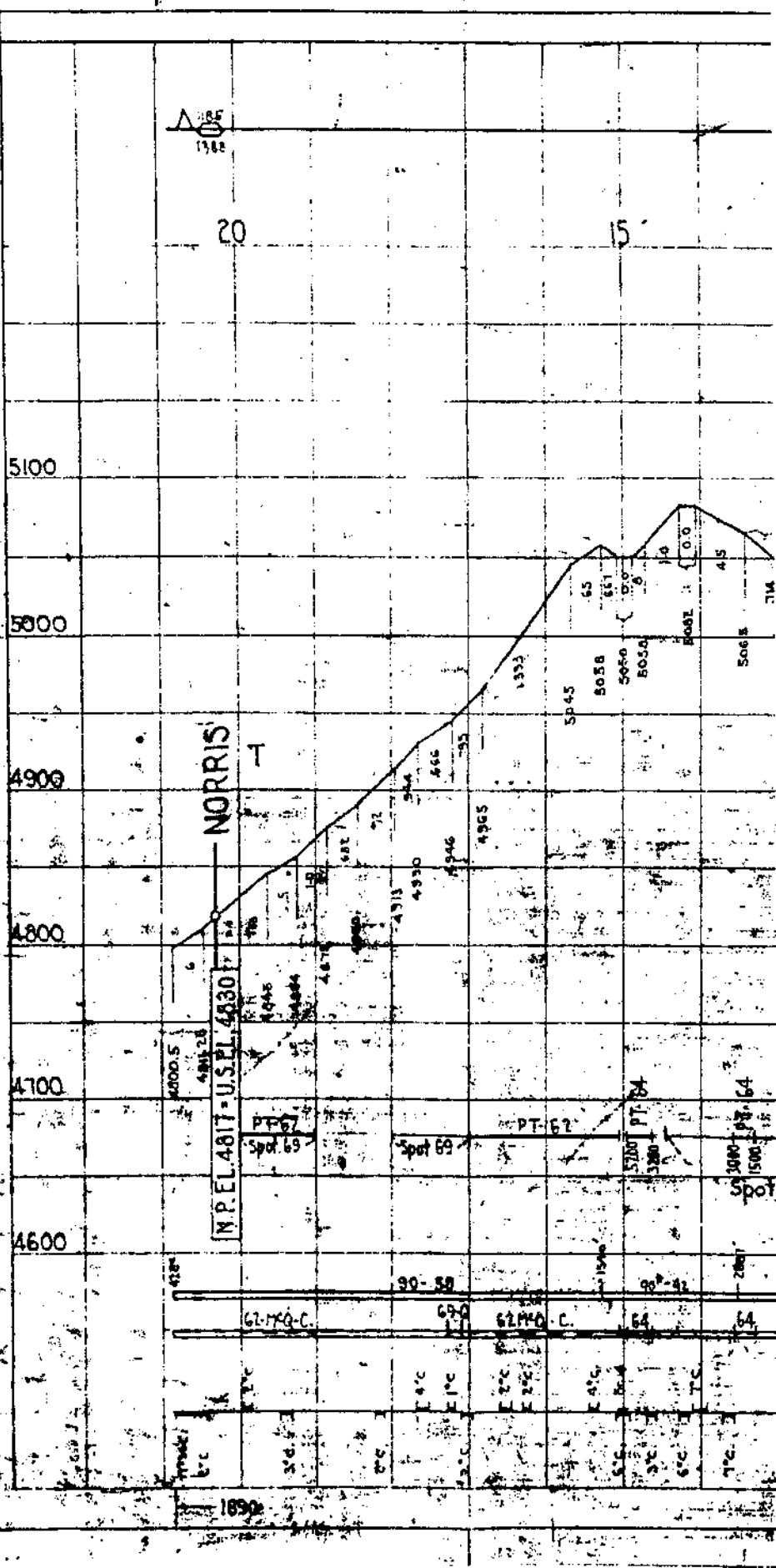
Br 4

I P.C.

Br 3

Br 4





▲ N  
1968

20

15

5100

5000

4900

4800

4700

4600

NORRIS  
T

N.P. EL. 4817 - U.S. EL. 4830

61-MQ-C.

63-59

62-MQ-C.

64

64

1890

Spot

PT-67  
Spot 69

Spot 69

PT-62

PT-64  
Spot

Spot

Spot

4817

4813

4930

4946

4965

5045

5058

5060

5064

5081

510

514

4900.5

4817.28

4845

4846

4817

4813

4930

4946

4965

5045

5058

5060

5064

5081

510

514

618

90-59

63-59

62-59

64

64

64

64

64

64

64

64

64

64

64

77c

77c

77c

77c

77c

77c

77c

77c

77c

77c

77c

77c

77c

77c

77c

TO BUTTE →

C.M. ST. P. & P. XING  
KING

TO BUTTE →

LOGAN

BR.

4800

N.P. EL. 4342 - U.S. EL. 4355

4700

Bed in Branch  
0 minus 29

4600

WHITE HALL

4500

C.M. ST. P. & P. XING

4400

75  
05  
06  
0.0  
0.0

4300

4345  
4336  
4337  
4333  
4328  
4340  
4352

0.2  
0.1  
0.1  
0.1  
0.1

596 20-49  
0 minus 29

Br. O.  
6-20-5  
7-25-5

0.1  
0.1  
0.1  
0.1

0.1  
0.1  
0.1

SILVER STAR

WATERLOO

RUBY VALLEY

MADISON CO.  
JEFFERSON CO.

44840

44465

Spot PT-68

Spot PT-65

56°-97-98

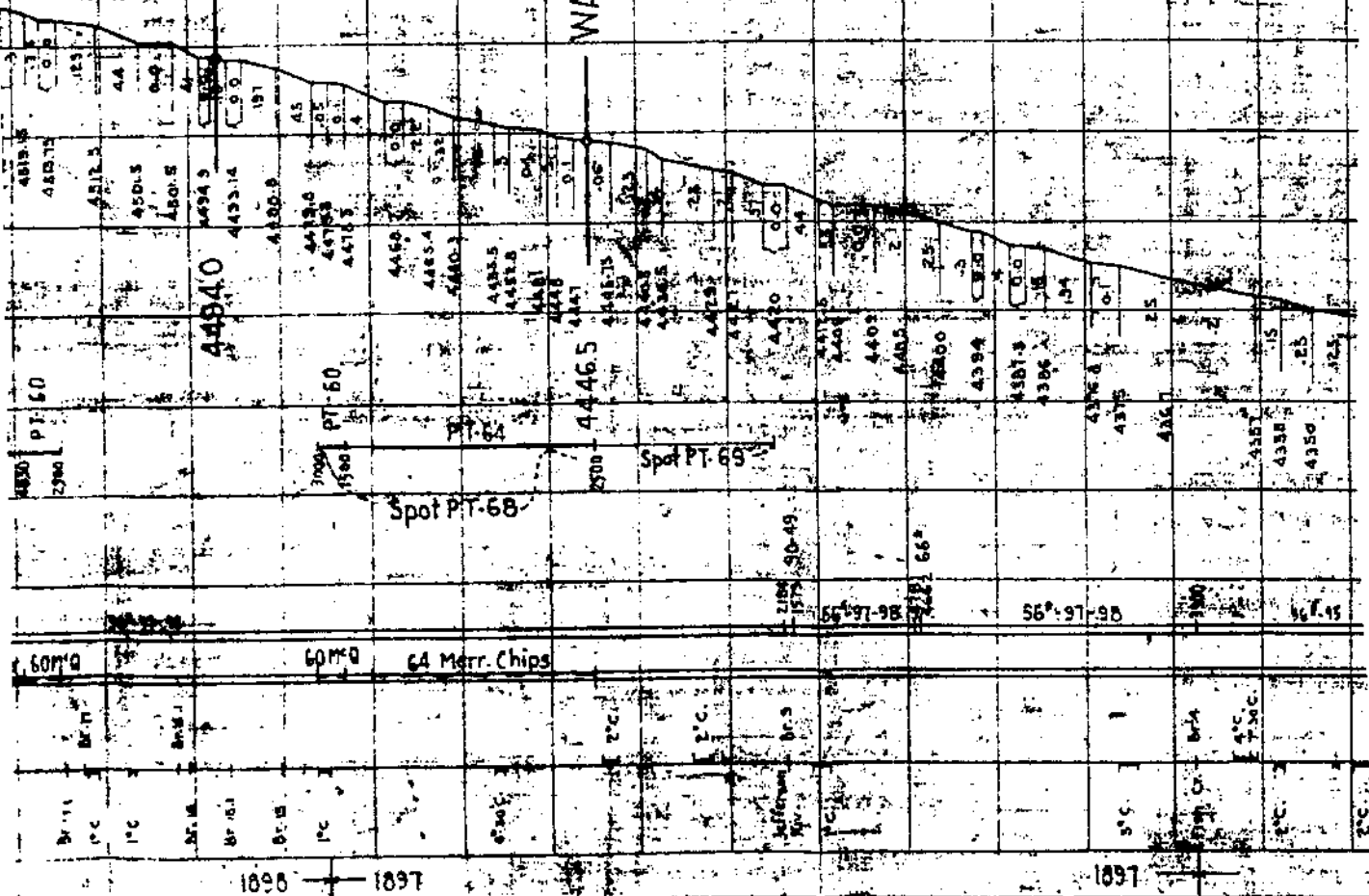
56°-97-98

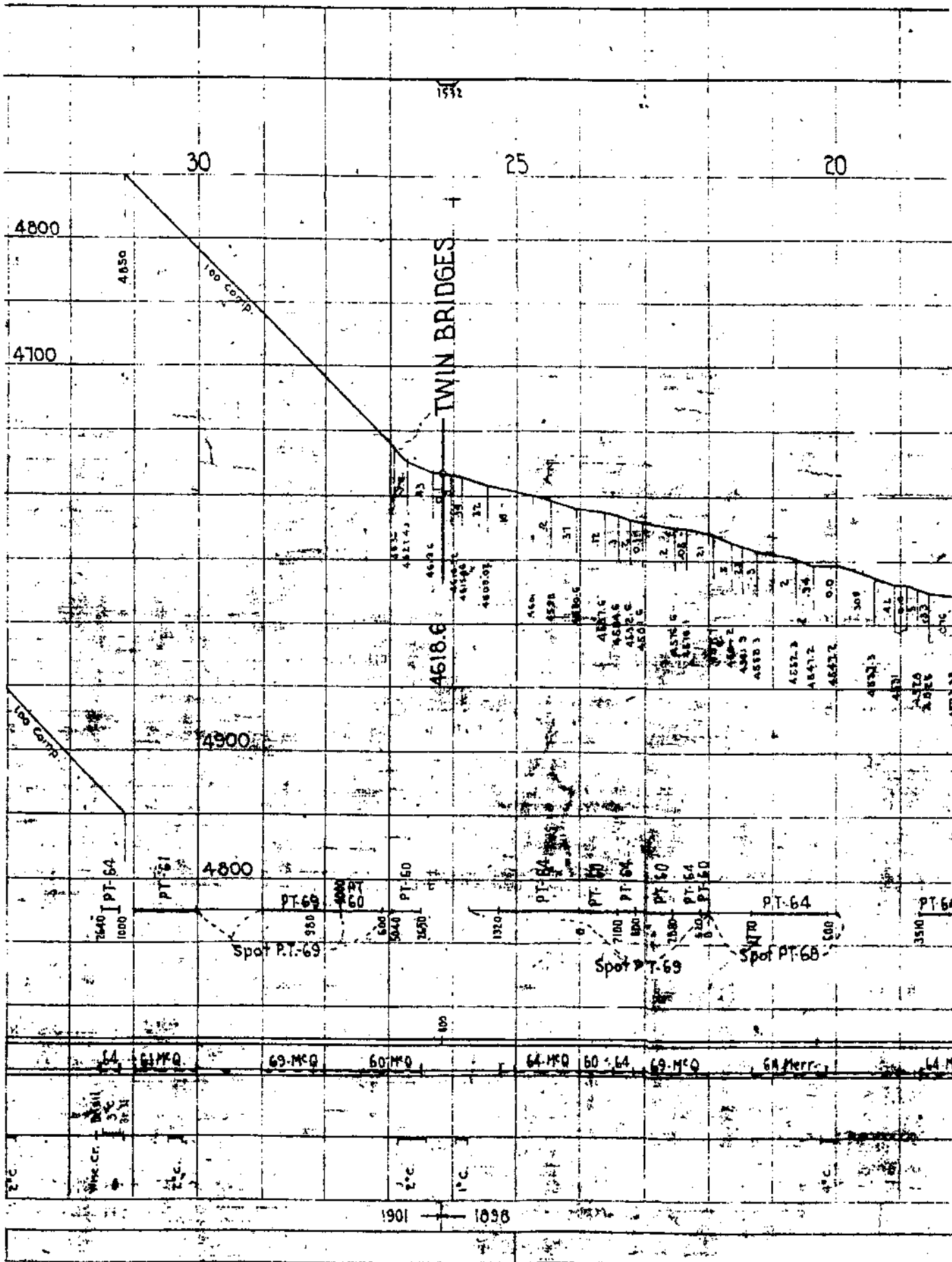
56°-95

1897

1897

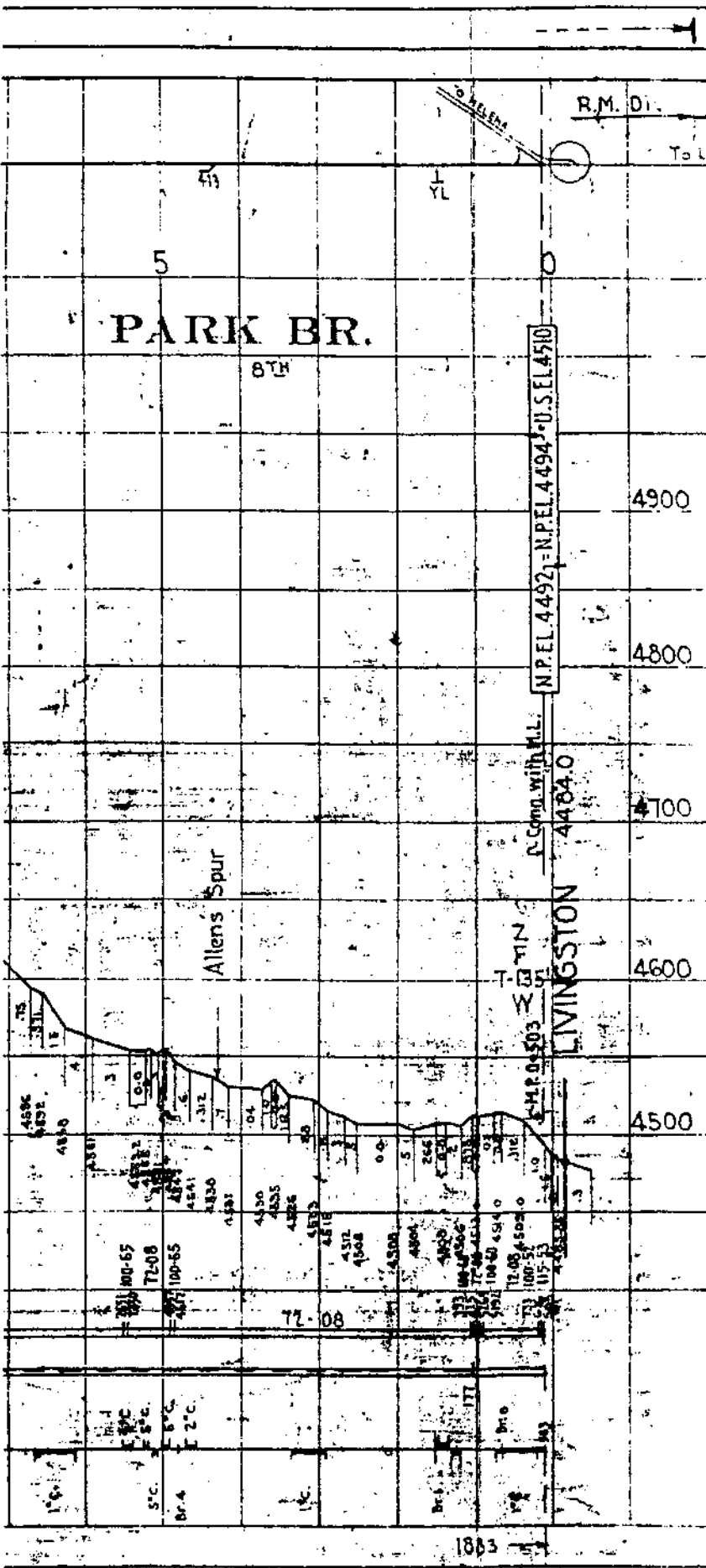
60' x 60' 64 Marr. Chips











R.M. Di. Tol

PARK BR.

8TH

Allens Spur

LIVINGSTON

4900

4800

4700

4600

4500

N.P.E.L. 4492, N.P.E.L. 4494, U.S.E.L. 4510

C. Conn. with M.L.L.

C.M.P. 04503

1883

20

15

10

CHICORY

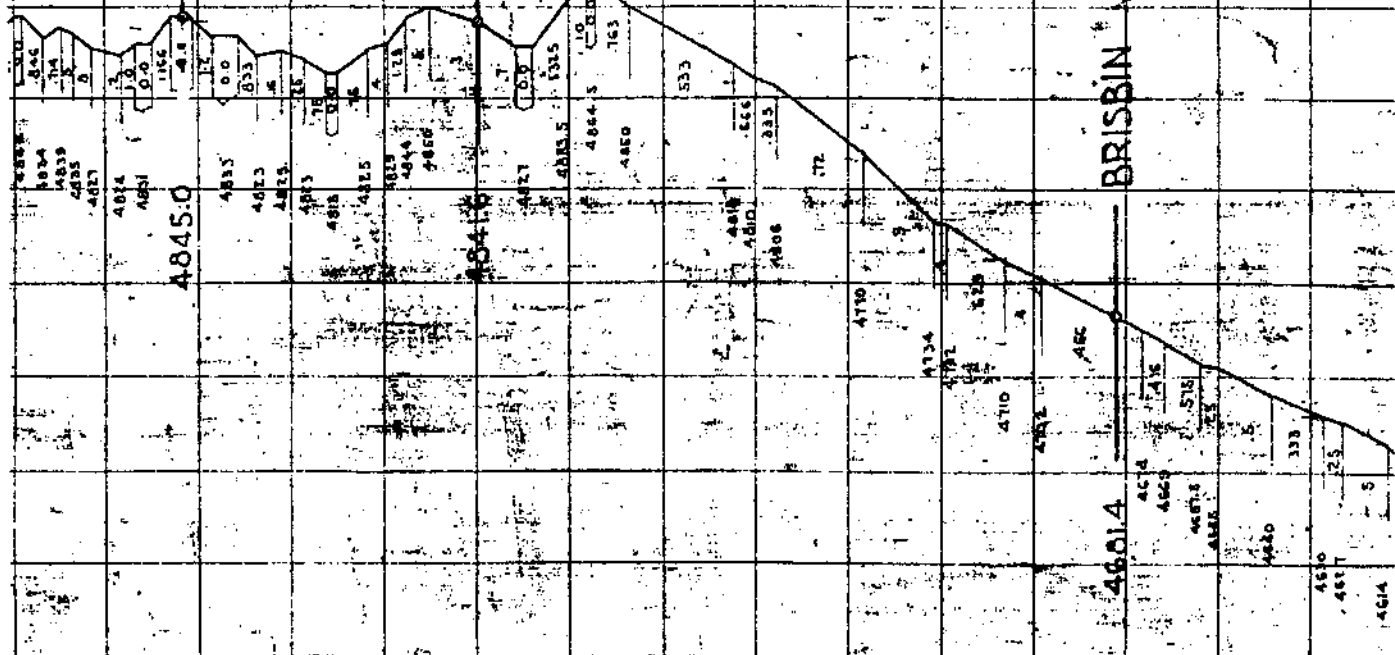
PRAY

BRISBIN

4845.0

4841.0

4881.4



1730  
1735  
1740  
1745  
1750  
1755  
1760  
1765  
1770  
1775  
1780  
1785  
1790  
1795

1730  
1735  
1740  
1745  
1750  
1755  
1760  
1765  
1770  
1775  
1780  
1785  
1790  
1795

1730  
1735  
1740  
1745  
1750  
1755  
1760  
1765  
1770  
1775  
1780  
1785  
1790  
1795

1730  
1735  
1740  
1745  
1750  
1755  
1760  
1765  
1770  
1775  
1780  
1785  
1790  
1795

1730  
1735  
1740  
1745  
1750  
1755  
1760  
1765  
1770  
1775  
1780  
1785  
1790  
1795

1955 Merriman Rock Chips

72-08

T-Livingston

35

30

25

1400

1754  
1514  
300  
1218  
1258  
1786  
YL  
YL

530 610

4900

Stock Spur  
EMIGRANT

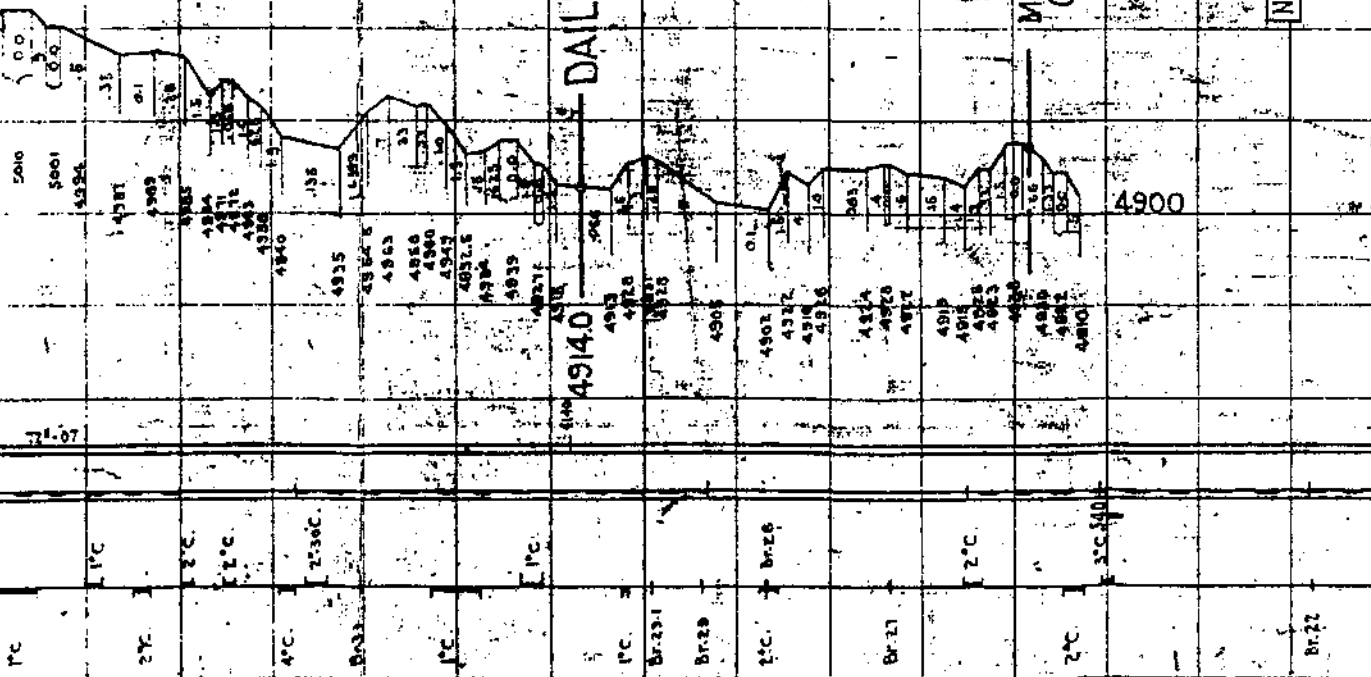
MERRIMAN 49360  
(Quarry)

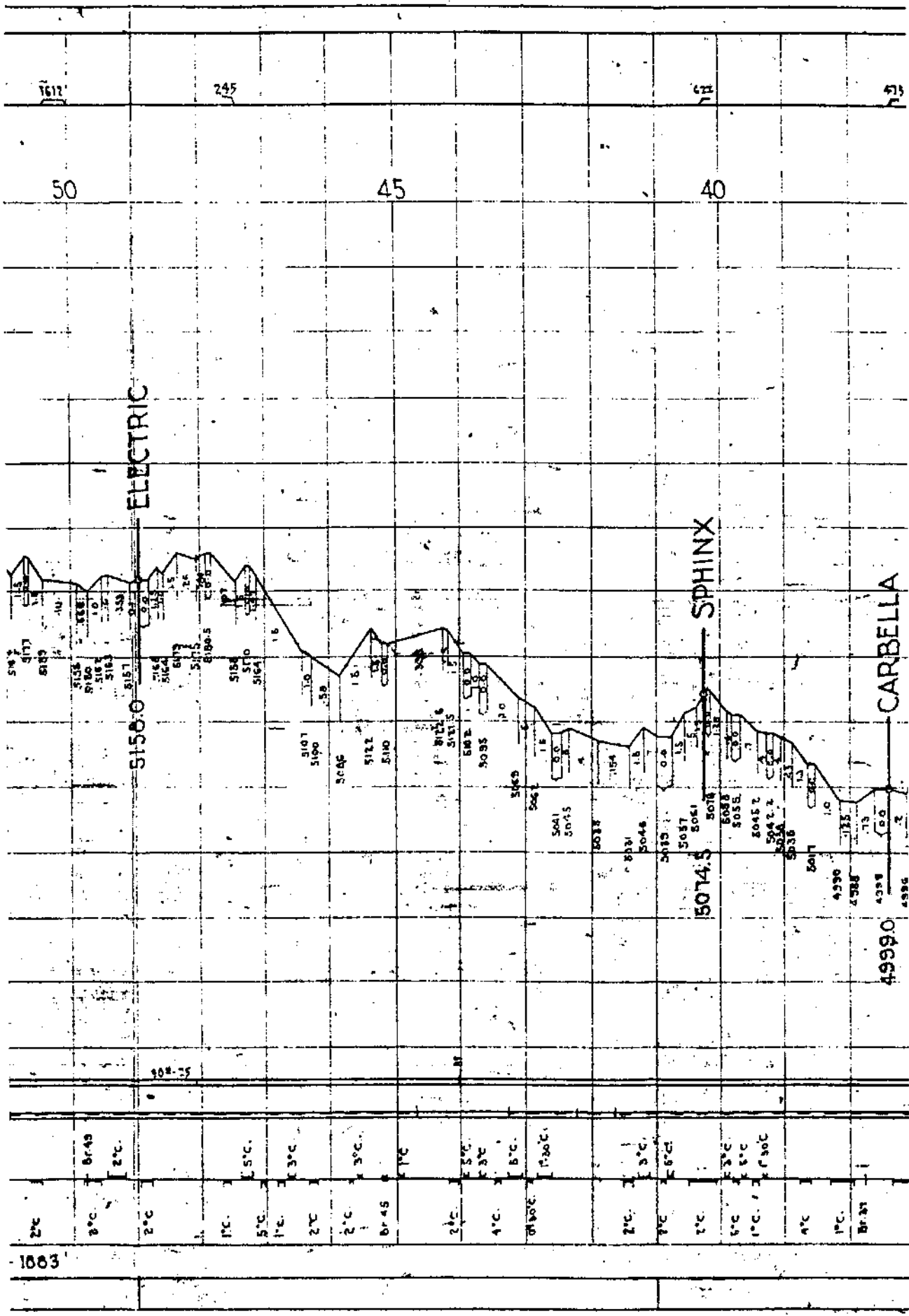
N.P.E.L. 4860 - U.S.E.L. 4874

DAILEY

49140

4900





7612 245 71 73

50 45 40

ELECTRIC

SPHINX

CARBELLA

5150

5074.5

4999.0

1600  
1500  
1400  
1300  
1200  
1100  
1000

2°C  
3°C  
2°C  
1°C  
5°C  
1°C  
2°C  
2°C  
Br 45  
2°C  
4°C  
1°C  
1°C  
2°C  
1°C  
1°C  
1°C  
1°C  
1°C  
1°C  
Br 37

1603

