



CONDENSED PROFILE AND TRACK CHART

FARGO DIV. BRANCH LINES

SYKESTON BR. (9)

OBERON BR. (10)

HOR. SCALE: 1 Inch = 2 Miles

VERT. " " 1 " = 100 Feet

Office of Chief Engineer
St. Paul, Minn. July 1922

Revised Jan. 1, 1970

Track Sections
Schedule of Tie Renewal Gang

Track Diagram

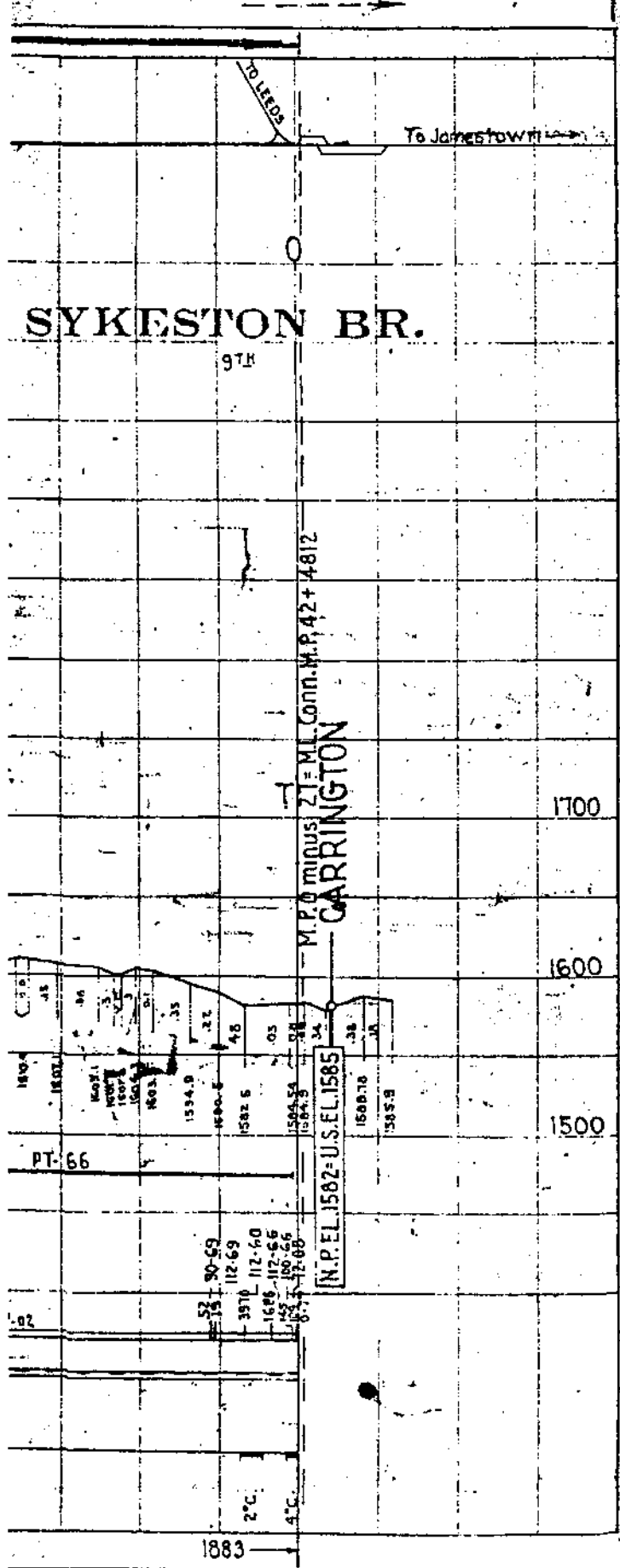
Mile Post

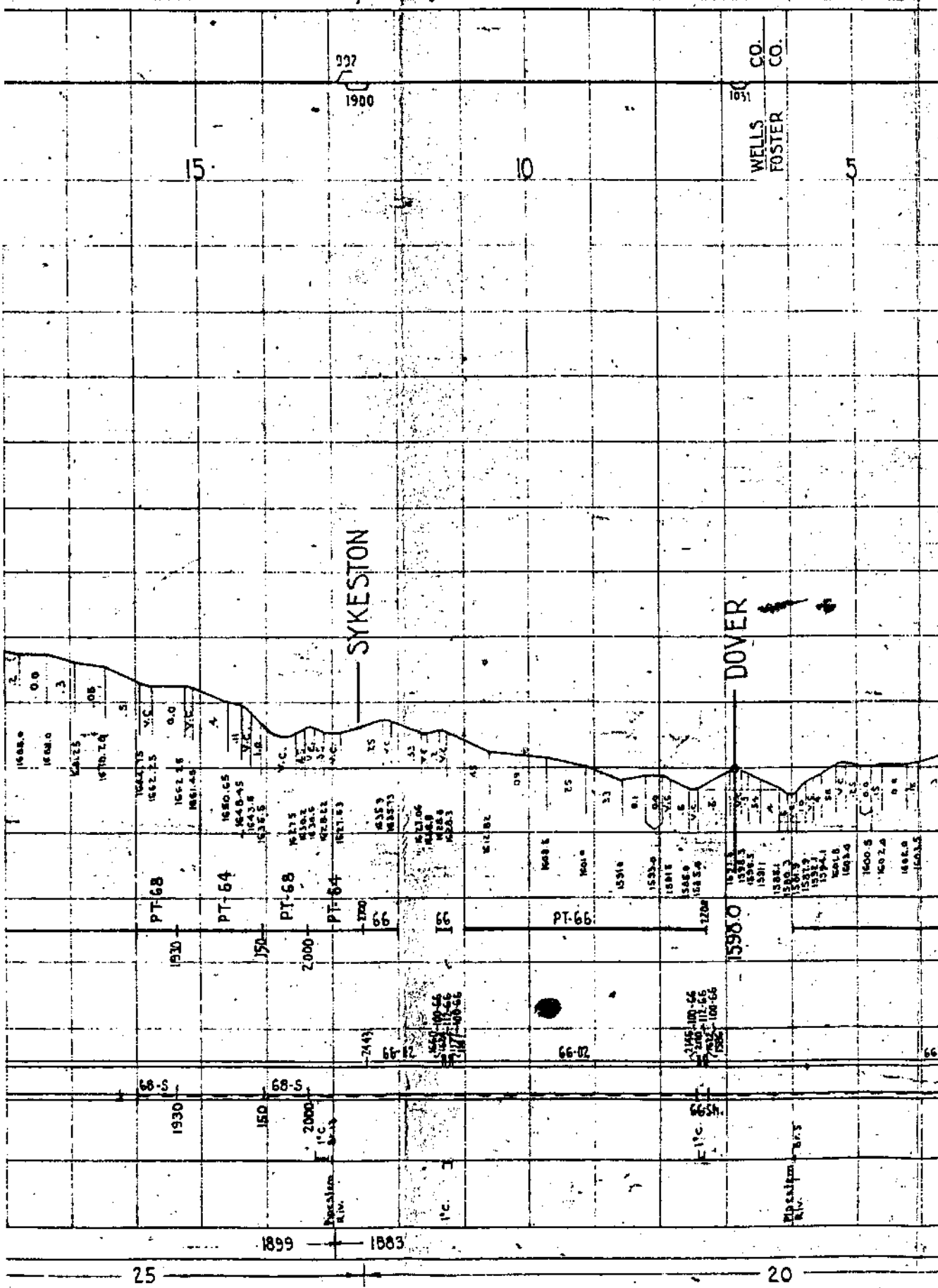
LEGEND

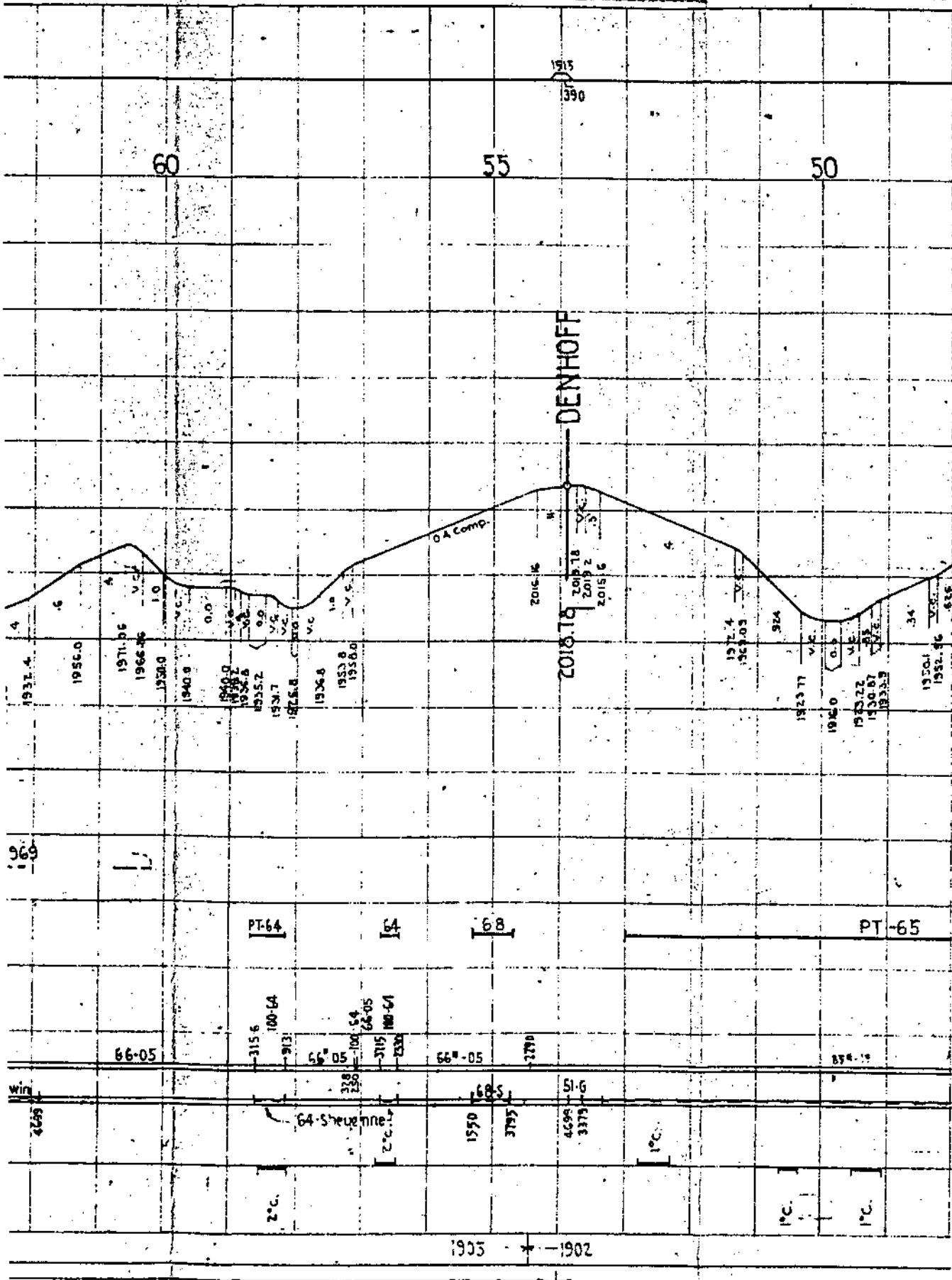
- NAME OF STATION
- Passing Tracks
- Yards
- Water
- Fuel
- Scales
- Turntable or Wye

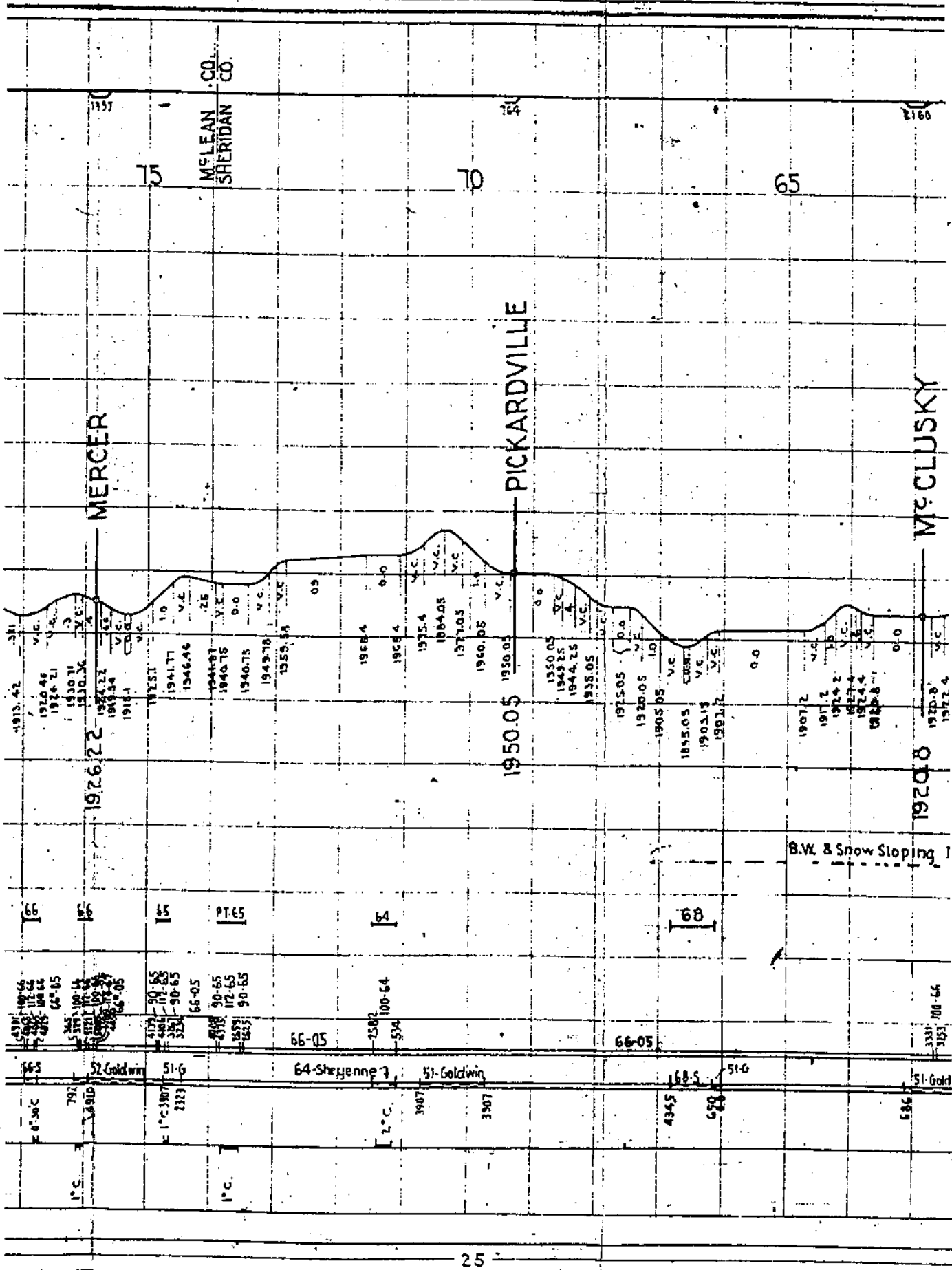
- RAIL
- BALLAST
- GRAVEL
- OTHER

- Rail
- Ballast
- Curvature & Bridges
- Year Constructed









MERCER

PICKARDVILLE

McCLUSKY

1926.22

1950.05

1926.1

B.W. & Snow Sloping

McLEAN CO.
SHERIDAN CO.

15
 16
 17
 18
 19
 20
 21
 22
 23
 24
 25
 26
 27
 28
 29
 30
 31
 32
 33
 34
 35
 36
 37
 38
 39
 40
 41
 42
 43
 44
 45
 46
 47
 48
 49
 50
 51
 52
 53
 54
 55
 56
 57
 58
 59
 60
 61
 62
 63
 64
 65
 66
 67
 68
 69
 70
 71
 72
 73
 74
 75
 76
 77
 78
 79
 80
 81
 82
 83
 84
 85
 86
 87
 88
 89
 90
 91
 92
 93
 94
 95
 96
 97
 98
 99
 100

35-Oberon

BR

OBERON

1600

1500

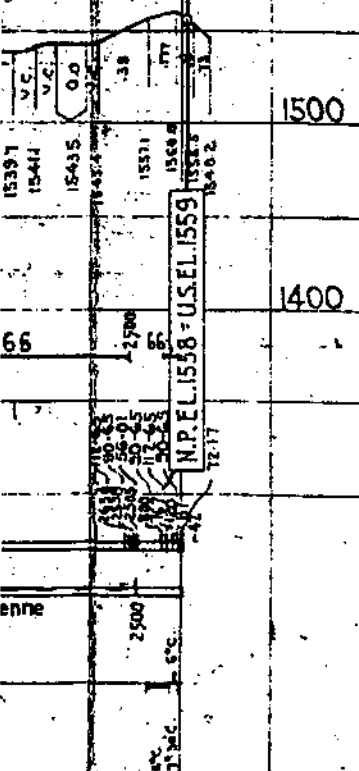
1400

66

enne

1901

40



99

85

80

TURTLE LAKE

1900

1800

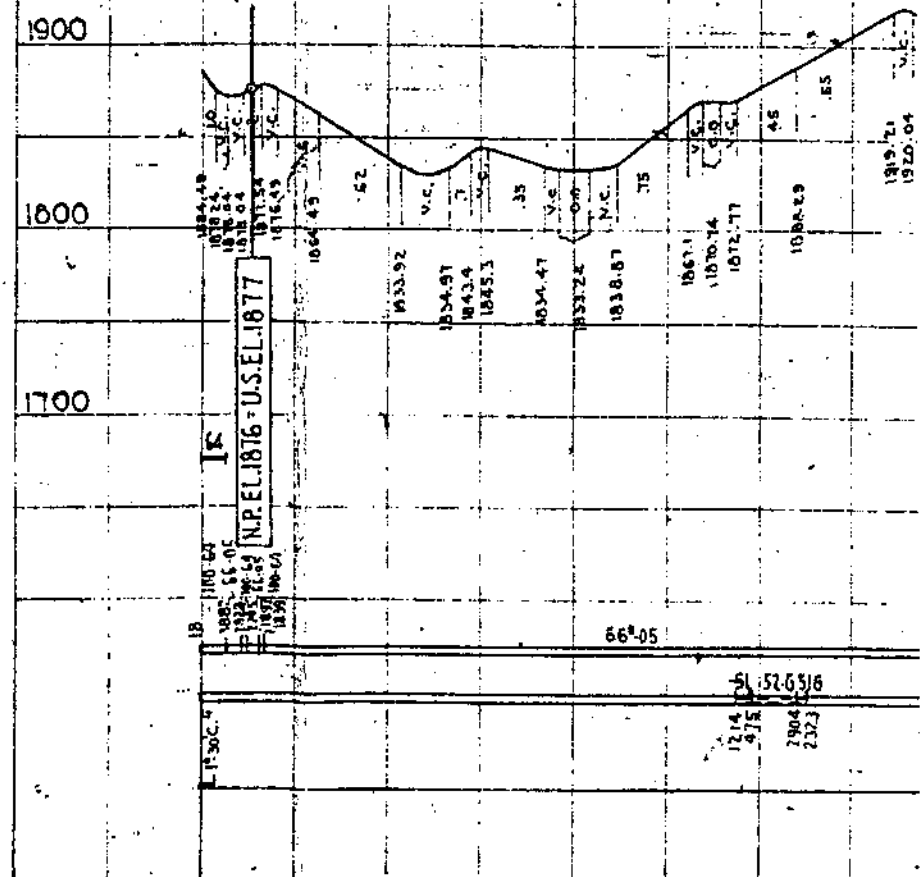
1700

16

18

30

Main St. - 8 M.P.H. 1905 S.M.E.H. Roosevelt St.



Rem. I.D.

1833
1195

1324

1321

15

10

5

OBERON

10TH

MADDOCK

FLORA

JOSEPHINE

1501.56

1573.2

1540.28

PT-68

PT-

46°-01

44°-100-61

56°-01

90°

131°

270°-90-66
1677

112-66

68-Shey.

6" Sheyenne

66-Shey.

382

1835
1351

141

25

20

ESMOND

HESPER

1600

1500

N.P.E.L. 1824 - U.S.E.L. 1875

112-65
113-65
114-65
115-65
116-65
117-65
118-65
119-65
120-65
121-65
122-65
123-65
124-65
125-65
126-65
127-65
128-65
129-65
130-65
131-65
132-65
133-65
134-65
135-65
136-65
137-65
138-65
139-65
140-65
141-65
142-65
143-65
144-65
145-65
146-65
147-65
148-65
149-65
150-65
151-65
152-65
153-65
154-65
155-65
156-65
157-65
158-65
159-65
160-65
161-65
162-65
163-65
164-65
165-65
166-65
167-65
168-65
169-65
170-65
171-65
172-65
173-65
174-65
175-65
176-65
177-65
178-65
179-65
180-65
181-65
182-65
183-65
184-65
185-65
186-65
187-65
188-65
189-65
190-65
191-65
192-65
193-65
194-65
195-65
196-65
197-65
198-65
199-65
200-65

68 68 68

68-S 68-S 68-S

3960

360

1320

2760

1260

4195

112-65
113-65
114-65
115-65
116-65
117-65
118-65
119-65
120-65
121-65
122-65
123-65
124-65
125-65
126-65
127-65
128-65
129-65
130-65
131-65
132-65
133-65
134-65
135-65
136-65
137-65
138-65
139-65
140-65
141-65
142-65
143-65
144-65
145-65
146-65
147-65
148-65
149-65
150-65
151-65
152-65
153-65
154-65
155-65
156-65
157-65
158-65
159-65
160-65
161-65
162-65
163-65
164-65
165-65
166-65
167-65
168-65
169-65
170-65
171-65
172-65
173-65
174-65
175-65
176-65
177-65
178-65
179-65
180-65
181-65
182-65
183-65
184-65
185-65
186-65
187-65
188-65
189-65
190-65
191-65
192-65
193-65
194-65
195-65
196-65
197-65
198-65
199-65
200-65

1051

nr. n