

1922

NORTHERN PACIFIC RAILWAY COMPANY
AUTHORITY FOR EXPENDITURE

Year: 1922

Superintendent's No. 5
No.

Dept. No. Engineering Dept. No. 17(22)

A. F. E. No. 63

IDAHO Div.

FIRST District State IDAHO

Val. Sec. No. 2

AUTHORITY IS REQUESTED FOR A NET EXPENDITURE OF \$ 14,041

Accounting distribution as follows (Distribution to be made in General Office.)

	Operating Expenses	Profit and Loss	Net Operating Expenses	Net Profit and Loss
Cost of property retired	\$ 2000	\$	\$	\$
Value of salvage	-	-	2000	-
Incidental costs	-	-	-	-
Total to Operating Expenses				\$ 2000
Total to Profit and Loss				
To Material and Supplies				
To Bills for Collection				
To Other Accounts				
Net charge to investment account Additions and Betterments				12041
Total of distribution				\$ 14041



Budget reference: *Not in Budget*
Joint facility contract reference: *not joint*

Class of Work: No. 1

The location is _____ on this company's property. To secure rights, it will be necessary

Location: CLARKS FORK, IDAHO.

CORPORATE

Title Crib Dyke and rock protection on Lightning Creek.

Reason: Last spring, channel below county bridge changed, striking below present crib dyke, running over the wooded island washing this out from behind and destroying rip rap protection in front of it for a distance of about 200 feet. During heavy flood last December, the lodging of drift in channel below dyke changed the channel causing flood waters to run east of main channel, and direct for overflow bridge #94, spreading out over station grounds and town of Clarks Fork. The overflow found an outlet thru Bridge 93, washing out the approaches on both sides. To prevent this in the future, and turn water back in old channel, it is proposed to construct a dyke as shown on attached sketch.

Made JUL 1922

Checked and Entered President's Office



Work to be done by ~~XXXXXX~~ under charge of ENGINEERING DEPARTMENT

Accounting to concentrate in the office of District Engineer-Spokane

Signature and Title: *A. P. Brown* Date Jan. 10th 1922

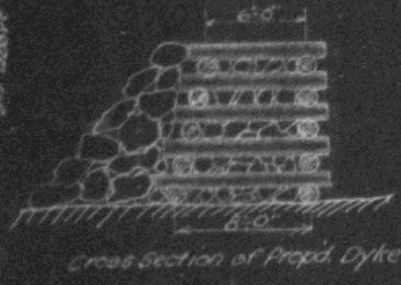
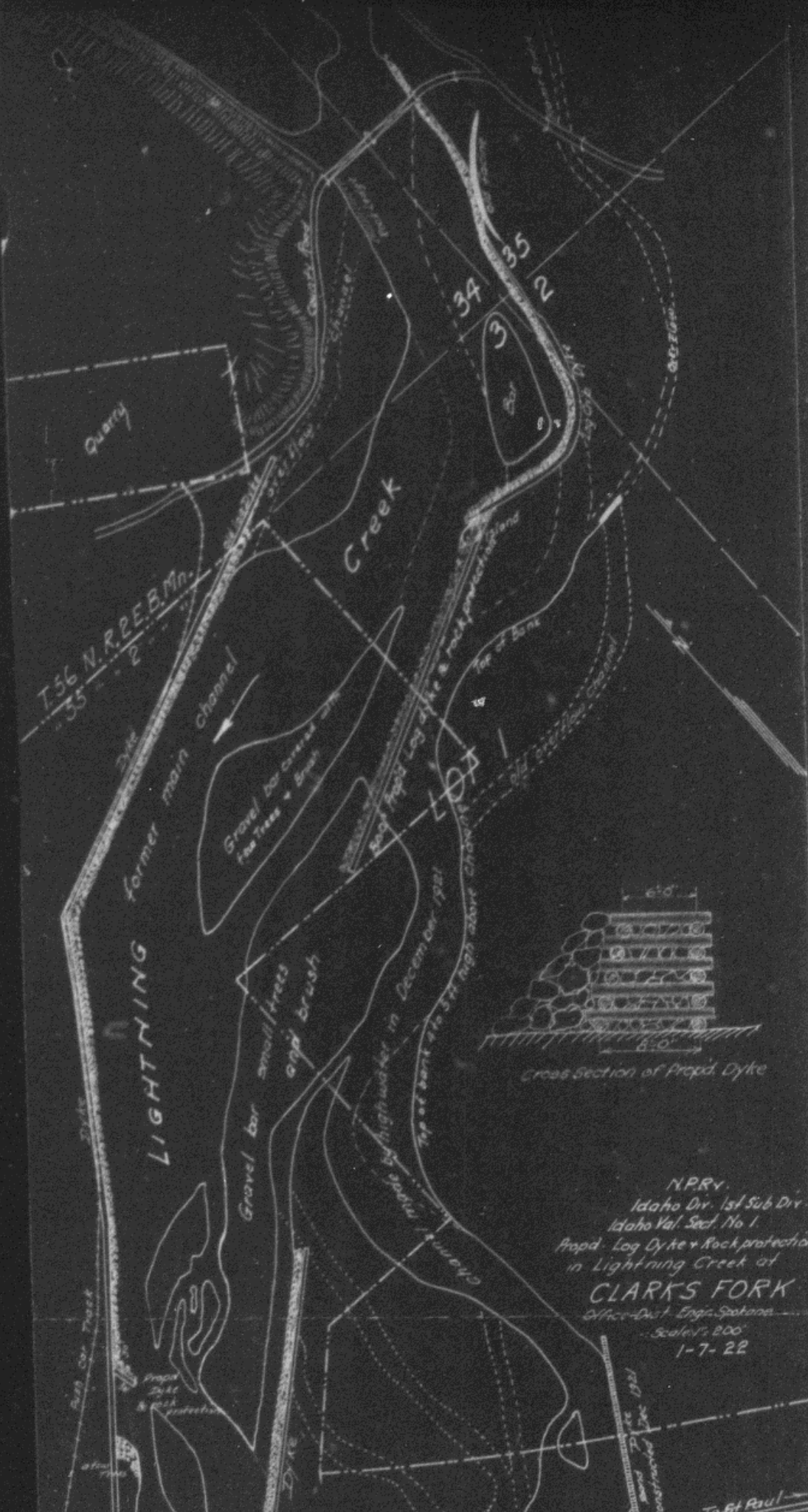
APPROVED: *A. P. Brown* General Superintendent. *A. P. Cook* Engr. of *17/18/22* Assistant General Manager.

Mech. Supt. or Supt. Telgr. *W. L. ...* Chief Engineer. *E. J. ...* General Manager. *W. M. ...* Vice President.

Comptroller. *Charles ...* Date of Final Approval } JAN 25 1922 19

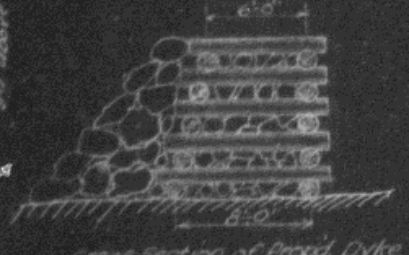
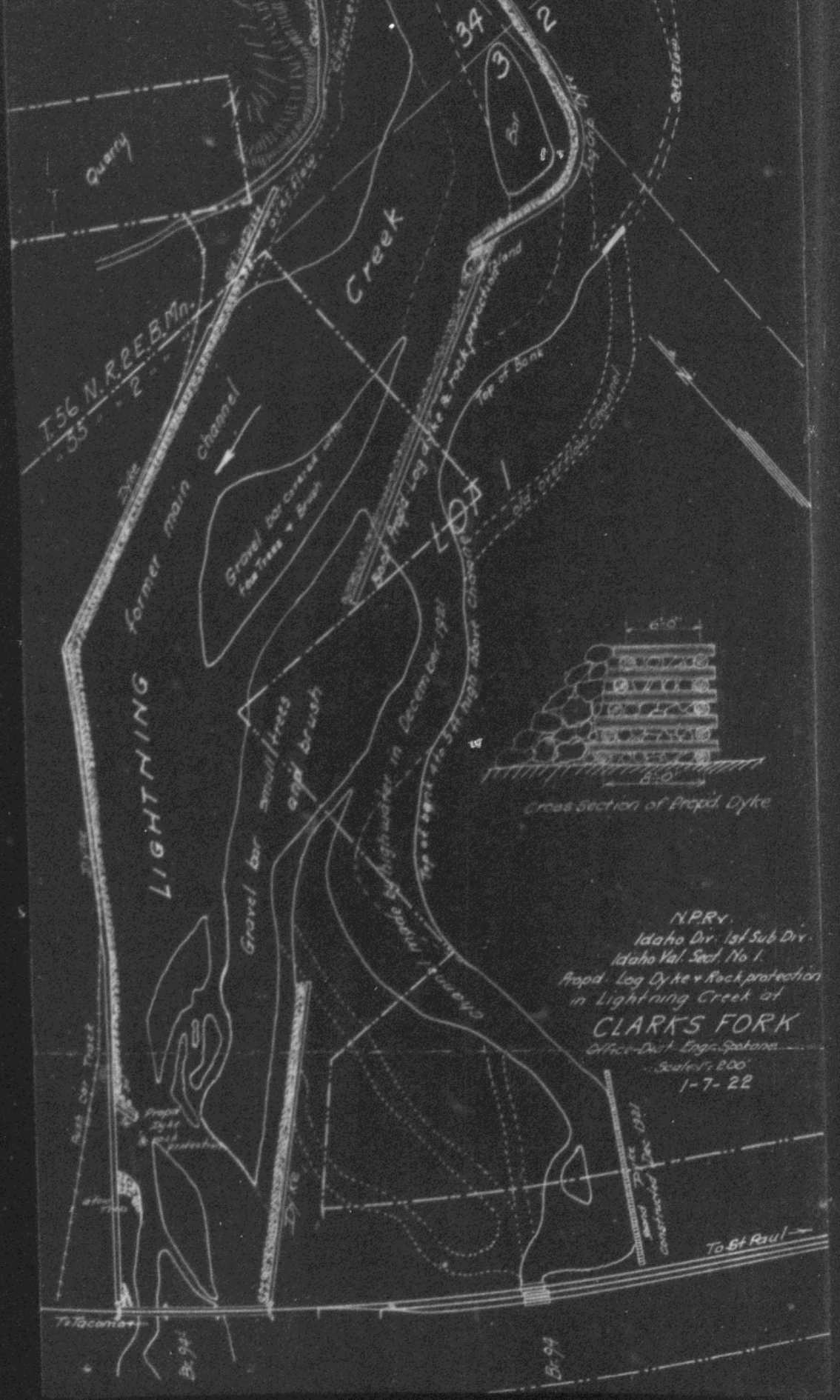
COMPTROLLER'S RECORD OF NOTICE OF APPROVAL AND OF COMPLETION

Form No. 1345 issued JAN 31 1922 19 Work begun _____ 19 Work finished Mar. 28 1922



N.P.R.V.
 Idaho Div. 1st Sub Div.
 Idaho Val. Sect. No. 1.
 Propd. Log Dyke + Rock Protection
 in Lightning Creek at
CLARKS FORK
 Office - Dist. Eng'g. Spokane
 Scale 1" = 200'
 1-7-22

To St Paul



Cross Section of Propd. Dyke

N.P.R.V.
 Idaho Div. 1st Sub Div.
 Idaho Val. Sect. No. 1.
 Propd. Log Dyke + Rock protection
 in Lightning Creek at
CLARK'S FORK
 Office Dist. Engrs. Spokane
 Scaled 1/2" = 200'
 1-7-22

Propd. Log Dyke + rock protection
 constructed by Dept. of
 Irrigation

To St Paul →