

NORTHERN PACIFIC RAILWAY COMPANY
AUTHORITY FOR EXPENDITURE

1923
Year: 1923

Superintendent's No. 1
No.

Dept. No. 5
Engineering Dept. No.

A. F. E. No. 57

Rocky Mountain Div. Second District State Montana Val. Sec. No. 16

AUTHORITY IS REQUESTED FOR A NET EXPENDITURE OF \$167

Accounting distribution as follows: (Distribution to be made in General Office.)

	Operating Expenses	Profit and Loss	Net Operating Expenses	Net Profit and Loss
Cost of property retired	\$ 91	\$	\$	\$
Value of salvage	47		44	
Incidental costs			50	
Total to Operating Expenses				\$ 94
Total to Profit and Loss				47
To Material and Supplies				
To Bills for Collection				
To Other Accounts				73
Net charge to investment account—Additions and Betterments				\$ 214
Total of distribution				

DEPRECIATION DOCUMENT EXHIBIT E

Original. Class of Work: No. 3

Budget reference: In Budget

Joint facility contract reference: Not Joint Account

The location is - - - on this company's property. To secure rights, it will be necessary

Location: Deer Lodge, Montana.

Title and Reason: Relay tracks across Milwaukee Avenue on account of the City paving.

During the last summer, an ordinance was passed by the City of Deer Lodge to pave Milwaukee Avenue with concrete blocks. This Avenue crosses the tracks of the Northern Pacific Railway Company and in connection with this paving it was necessary to relay the sixty and sixty-six pound steel through the crossings on both the house and passing track with third eighty-five pound steel, owing to the worn condition and the height of the rail, which must conform to the surface of the concrete pavement.

This work was completed June 21st, 1922.

Checked and Entered
President's Office

Completed June 14, 1922

Work done by company force under charge of Division Superintendent.

Accounting to concentrate in the office of Superintendent, Missoula.

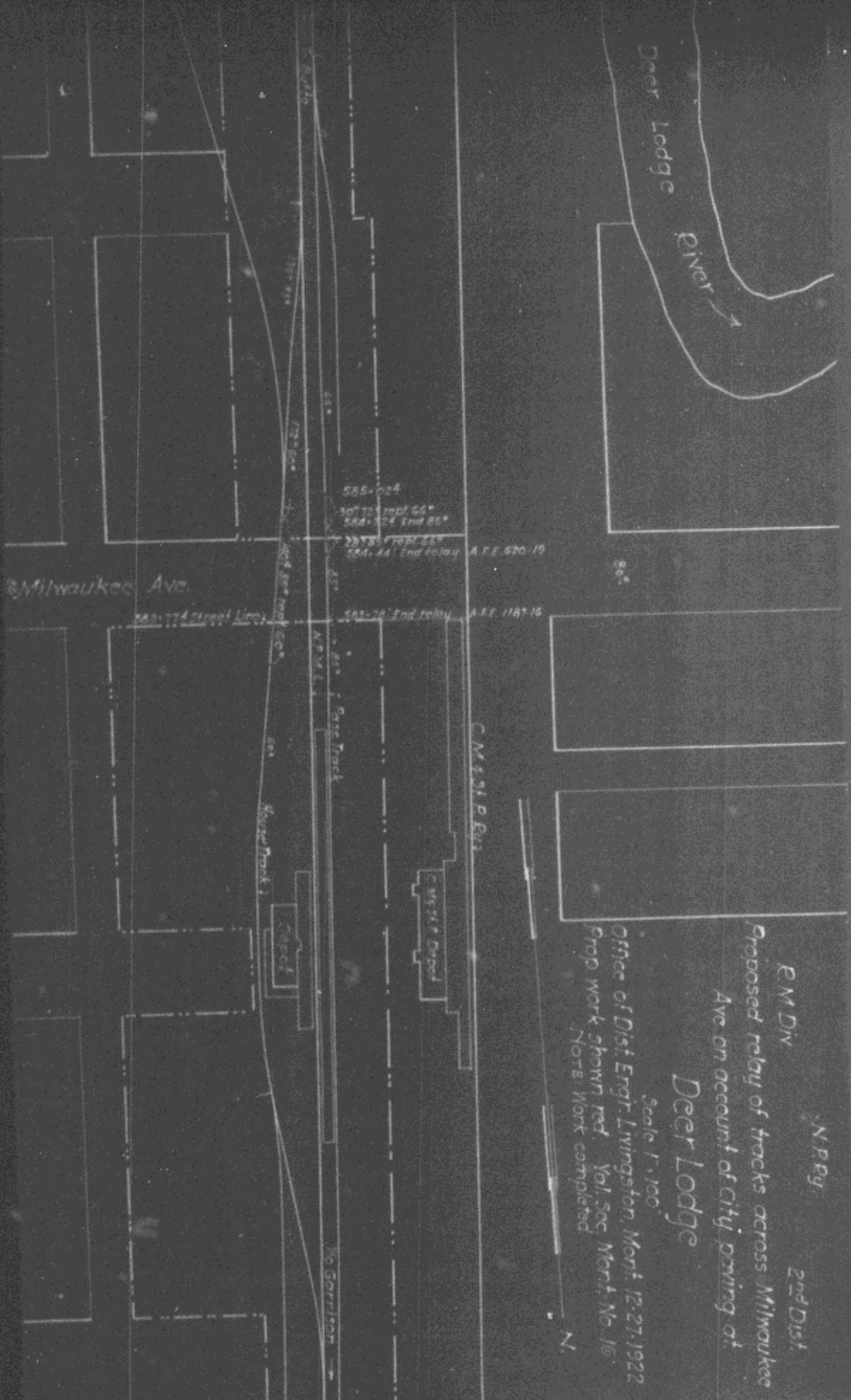
Signature and Title: *J. H. Bartles* Superintendent. Date January 4th, 19 22

APPROVE: <i>[Signature]</i> General Superintendent	<i>[Signature]</i> Engr. Maint. of Way.	<i>[Signature]</i> Assistant General Manager.
<i>[Signature]</i> Mech. Supt., Supt. Telgh. or Signal Engr.	<i>[Signature]</i> Chief Engineer.	<i>[Signature]</i> General Manager.
<i>[Signature]</i> General Auditor or Comptroller.	<i>[Signature]</i> President.	<i>[Signature]</i> Vice President.

Date of Final Approval } 1 2 22 19

COMPTROLLER'S RECORD OF NOTICE OF APPROVAL AND OF COMPLETION

Form No. 1345 issued JAN 28 1923 Work begun 19 Work finished June 21, 1922



N.P.P.G.
 2nd Dist.
 E.M.D.V.
 Proposed relay of tracks across Milwaukee
 Ave on account of city paving at
 Deer Lodge
 Scale 1" = 100'
 Office of Dist. Engr. Livingston, Mont. 12-27-1922
 Prop. work shown red. Val. Sec. Mont. No. 16
 NOTE: Work completed
 N.

Montana Avenue

Milwaukee Avenue

Missouri Avenue

H.B. 589+777

H.B. 84+912

585+026

30° 52' repl. 66°

23° 85' repl. 66°

504+441

7547.66'

122' 60"

40° 85' repl. 60°

180' 50"

1472'-85'

Main Line

Passing Track

Depot

House Track

CM&STP
Depot

to Garrison

Office of District Engineer, Livingston, Mont., U.S.A.
Valuation Section
Authorized under A.F.E. 57 Dated 1/25/23
Work begun
Work completed
Noted on # 6
May 1922
June 1, 1922

R.M.D.V. N.P.R.Y.
Relay Tracks across Milwaukee Ave
Deer Lodge
Scale 1/100'