

NORTHERN PACIFIC RAILWAY COMPANY  
AUTHORITY FOR EXPENDITURE

Year: 1922

Superintendent's No. 108  
No.

Dept. No. Engineering Dept. No. 1

A. F. E. No. 53

Lake Superior Div. Superior District State Wisc. Val. Sec. No. No. 3  
Terminals ADKAKA

AUTHORITY IS REQUESTED FOR A NET EXPENDITURE OF \$ 1304.00

Accounting distribution as follows: (Distribution to be made in General Office)

RECORDED  
INDEXED  
ENTERED ON  
EXHIBIT

	Operating Expenses	Profit and Loss	Net Operating Expenses	Net Profit and Loss
Cost of property retired	\$ 756	\$	\$	\$
Value of salvage	480			
Incidental costs			278	
Total to Operating Expenses			278	
Total to Profit and Loss				557
To Material and Supplies				480
To Bills for Collection				
To Other Accounts				
Net charge to investment account—Additions and Betterments				747
Total of distribution				\$ 1784

CORPORATE  
MADE IN JULY 1922  
Adjustment 3

Budget reference: Not in Budget Class of Work: No. 3

Joint facility contract reference: C.M. & St. P. Ry. Co. Oct. 1st 1900, Art. 2  
D.W. & P. Ry. Co. June 16, 1913

The location is - - - on this company's property. To secure rights, it will be necessary

Location: Superior Wisconsin. JUL 1923

Title and Reason: Relay and replacing of 72# R.R. Crossing with 85# crossing.

In February 1920 a requisition was submitted covering 72# railroad crossing to replace worn out crossing at Winter Street on the Grassy Point Line. At that time data was being prepared covering a relay in this territory which contemplated the use of 85# rail and necessitated an 85# crossing. The requisition was, therefore, cancelled and it was intended that the replacing of the crossing would be included in the AFE covering the relay. This, however, was not done. The negotiations were had with the Great Northern requesting that they replace 72# crossing in their track at this location to conform with the proposed relay on our line. The relay work was postponed

Work to be done by company force under charge of Superintendent

Accounting to concentrate in the office of Superintendent

Signature and Title: A. H. Strachan Superintendent Date Dec. 15th 1921

APPROVED:

*Charles J. ...* General Superintendent

*...* Chief Engineer

*...* General Manager

*...* Vice President

*...* President

Date of Final Approval: JAN 25 1922

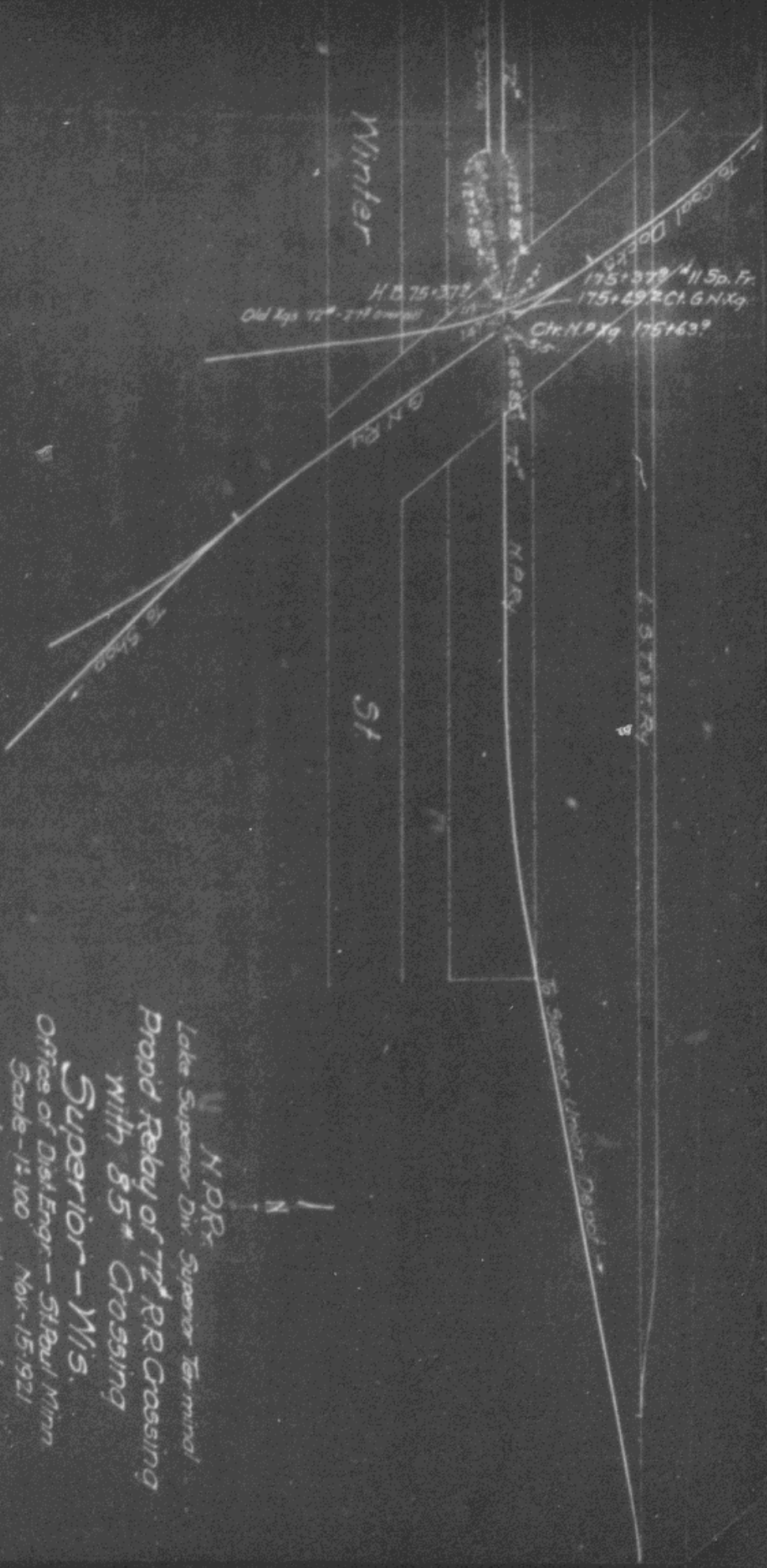
COMPTROLLER'S RECORD OF NOTICE OF APPROVAL AND OF COMPLETION

Form No. 1345 issued JAN 30 1922 Work begun 19 Work finished JAN 27 1922

and in the meantime the Great Northern has delivered on the ground an 85# crossing.

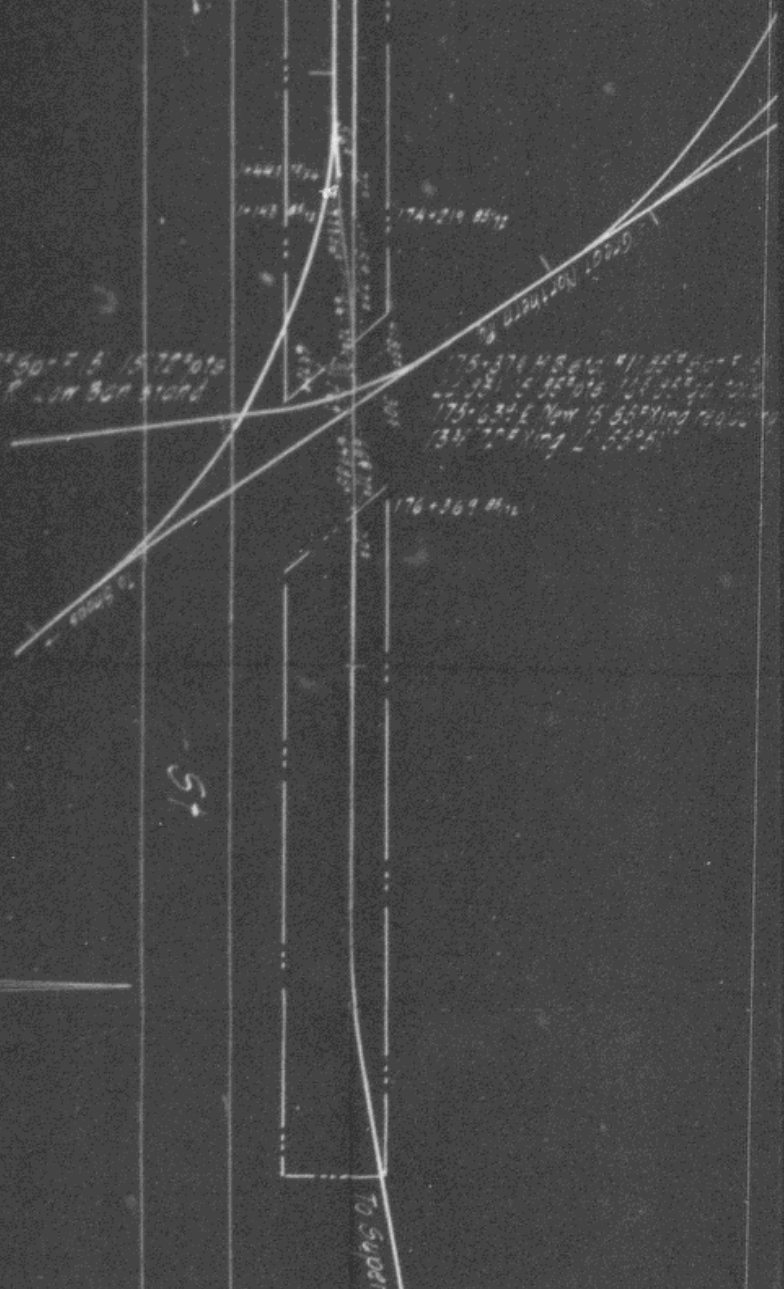
The present 72# crossing in their track must be changed out and as it was at our request that they provided 85# crossing, we should permit of its installation and this, of course, necessitates replacement of our 72# crossing.

Lake Superior Division requisition 525, dated August 30th, covering 85# crossing for this location was approved and delivery is expected by December 20th, 1921. Assistant General Manager's letter dated October 11, 1921, informally authorized this replacement and the work will be carried out immediately upon receipt of the material.



N.P.R.  
 Lake Superior Div. Superior Terminal  
 Prop'd Rebay of 72' RR Crossing  
 with 85' Crossing  
 Superior - M/S.  
 Office of Dist. Engr. - St. Paul Minn.  
 Scale - 1" = 100' Nov. - 15, 1921  
 New work shown red  
 Evaluation Section No. 3 Misc

Water



176+300  
175+370  
175+340  
175+320  
176+369

Grade Northern R.  
175+370  
175+340  
175+320  
176+369

176+300  
175+370  
175+340  
175+320  
176+369

N.P.P.

176+300

175+370

175+340

175+320

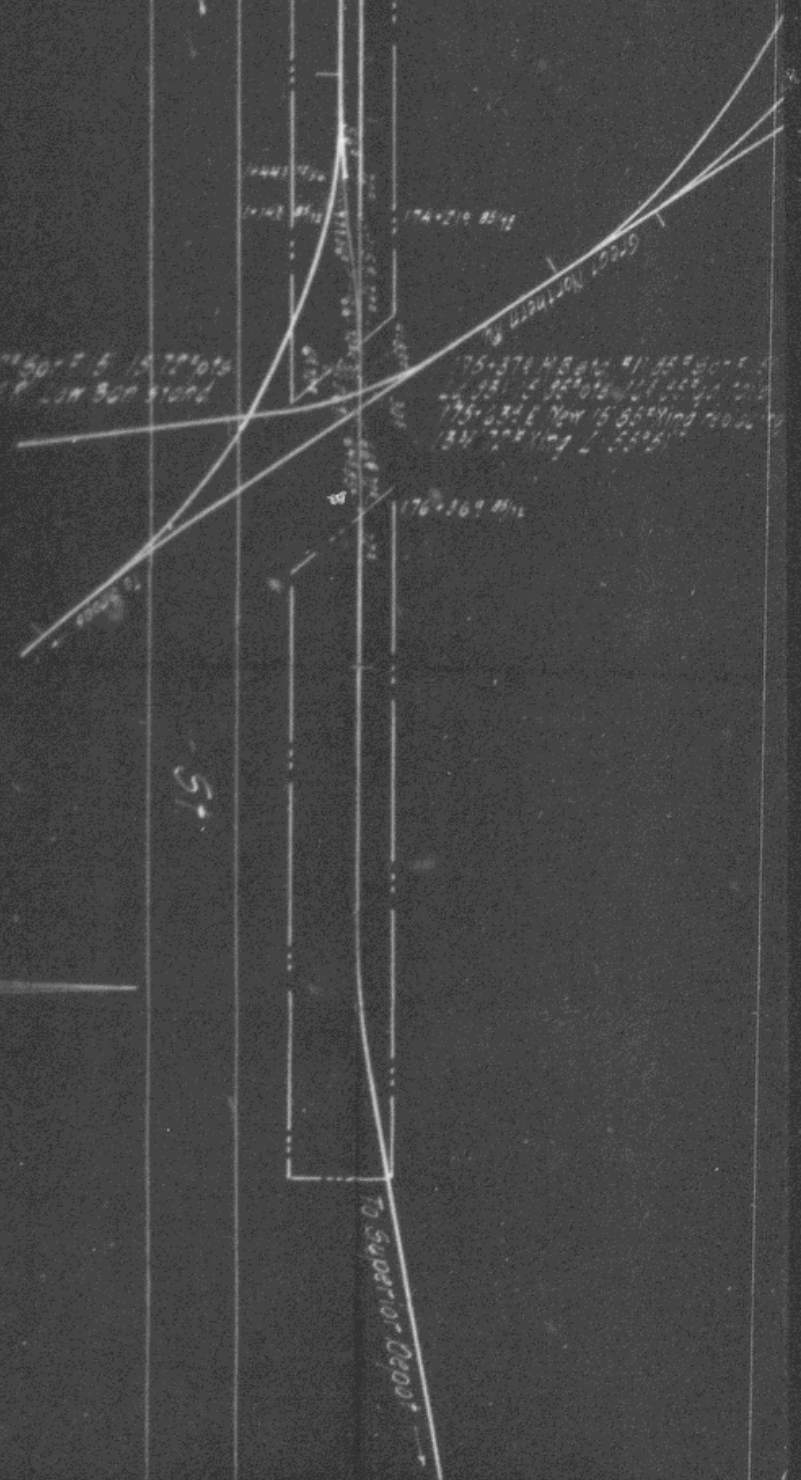
176+369

5

To SUPER

176+300  
175+370  
175+340  
175+320  
176+369

Water



174+21.85  
 176+30.85  
 175+37.85  
 Good Northm  
 To Superior 0200'

NPP

Low Superior Ave

Superior Terminal

Superior MS

Superior crossing with 85' crossing

174+21.85  
 176+30.85  
 175+37.85  
 Good Northm  
 To Superior 0200'