

1921
Form 1345 10M 6-30 8

1921

DULUTH UNION DEPOT AND TRANSFER COMPANY
~~NORTHERN PACIFIC RAILWAY COMPANY~~
AUTHORITY FOR EXPENDITURE

Year: 1921

Superintendent's No. _____ Dept. No. _____
No. _____ Engineering Dept. No. _____

A. F. E. No. **1**

Lake Superior Div. **Duluth Terminal** District Branch State **Minnesota** Val. Sec. No. **1**

AUTHORITY IS REQUESTED FOR A NET EXPENDITURE OF **\$ 6 253.**

Accounting distribution as follows: (Distribution to be made in General Office.)

	Operating Expenses	Profit and Loss	Net Operating Expenses	Net Profit and Loss
Cost of property retired	\$ 228.	\$	\$	\$
Value of salvage			228.	
Incidental costs			253.	
Total to Operating Expenses				\$ 481.
Total to Profit and Loss				
To Material and Supplies				
To Bills for Collection				
To Other Accounts				
Net charge to investment account—Additions and Betterments				5 772.
Total of distribution				\$ 6 253.

Budget reference:

Class of Work: No. 17

Joint facility contract reference:

The location is --- on this company's property. To secure rights, it will be necessary

Location: **Duluth, Minnesota,**

Title **Freight elevator in express room.**
and

Reason: **At the present time, there are two small elevators from the basement to the first floor serving the Express Company. These elevators were built about thirty years ago to serve the Northern Pacific and the Great Northern Express Companies. Since unification of the Express Companies, one elevator will serve the needs. The present elevators are too small and are worn out. Their condition is such that they are not considered safe to operate. Their capacity is inadequate to handle loads. The Express Company has agreed to increase their rental payments by nine (9%) percent of capital cost of this improvement. The work is to be done by the Northern Pacific and charged to the Depot Company.**

Work to be done by company force ~~contract~~ under charge of **Superintendent**

Accounting to concentrate in the office of **Superintendent, Duluth Union Depot & Transfer Co.**

Signature and Title: **Superintendent** Date **February 21st, 19 21**

APPROVED:	<i>Bernard Blum</i>	
General Superintendent.	Gen. Asst. Engr. or Engr. Maint. of Way.	Assistant General Manager.
Mech. Supt., Supt. Tel. or Signal Engr.		
<i>[Signature]</i>		<i>[Signature]</i>
Chief Engineer.	General Manager.	Vice President.
<i>[Signature]</i>	<i>[Signature]</i>	
General Auditor or Comptroller.	President.	Date of Final Approval
		44 21 19

COMPTROLLER'S RECORD OF NOTICE OF APPROVAL AND OF COMPLETION

Form No. 1345 issued **Apr 8 1921** Work begun _____ 19 _____ Work finished _____ 19 _____

DULUTH UNION DEPOT AND TRANSFER COMPANY
~~NORTHERN PACIFIC RAILWAY COMPANY~~
AUTHORITY FOR EXPENDITURE

Year: 1921.

Superintendent's No.
No.

Dept. No.
Engineering Dept. No.

A. F. E. No. 1021

Div. ----- District State **Minnesota** Val. Sec. No. 1
Branch

AUTHORITY IS REQUESTED FOR A NET EXPENDITURE OF \$ 41

Accounting distribution as follows: (Distribution to be made in General Office.)

	Operating Expenses	Profit and Loss	Net Operating Expenses	Net Profit and Loss
Cost of property retired	\$ 725	\$	\$	\$
Value of salvage	80		645	
Incidental costs			55	
Total to Operating Expenses				\$ 700
Total to Profit and Loss				80
To Material and Supplies				
To Bills for Collection				
To Other Accounts				
Net charge to investment account—Additions and Betterments				(659)
Total of distribution				\$ 121

Budget reference: **Not In Budget**

Class of Work: No. 17

Joint facility contract reference:

The location is --- on this company's property. To secure rights, it will be necessary

Location: **Duluth, Minn.**

Title and Reason: **Removal of two hand-operated elevators in express room at Union Depot.**

This removal is incidental to installation of new electrically-operated elevators under A.F.E. Comp.No.1, 1921.

Checked and Entered
President's Office



Work to be done by ~~company force~~ under charge of Superintendent, D.U.D. & T. Co.

Accounting to concentrate in the office of Superintendent, D.U.D. & T. Co.

Signature and Title:

Date **December 10th, 19 21.**

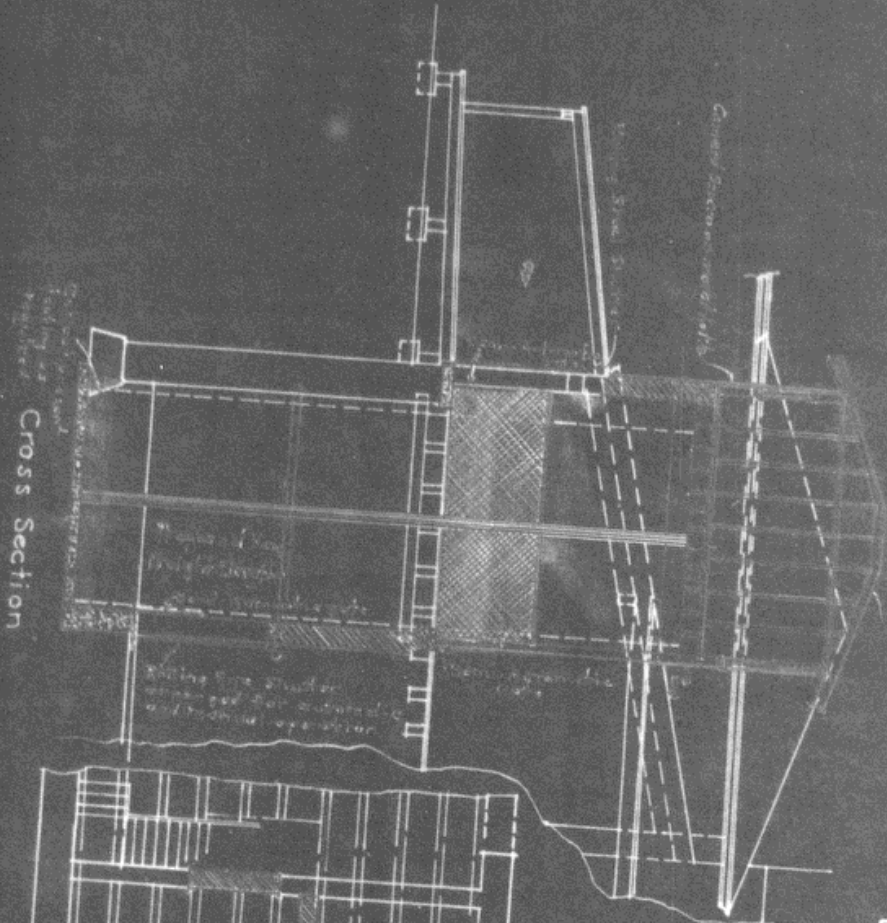
APPROVED:

	<i>S. Whately</i> Principal Asst. Engineer.	
General Superintendent.	Engr. of Maint. of Way.	Assistant General Manager.
Mech. Supt. or Supt. Telgh.		
<i>[Signature]</i> Chief Engineer.	<i>[Signature]</i> General Manager.	<i>[Signature]</i> Vice President.
<i>[Signature]</i> Comptroller.	<i>Charles Kennedy</i> President.	Date of Final Approval } DEC 16 1921 19

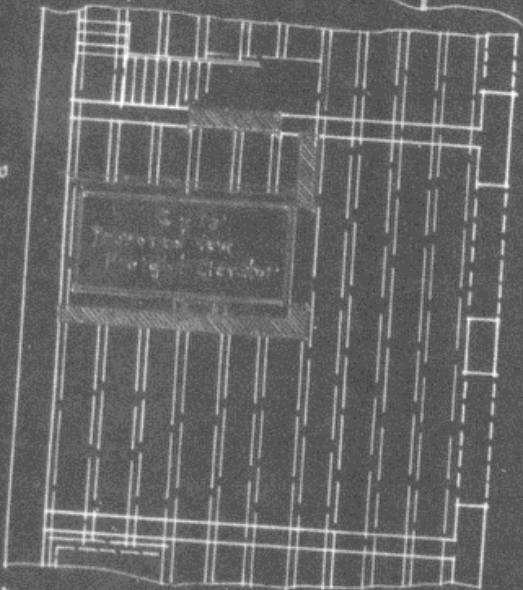
COMPTROLLER'S RECORD OF NOTICE OF APPROVAL AND OF COMPLETION

Form No. 1345 issued 10-24-1921 Work begun 19 Work finished 19

Cross Section

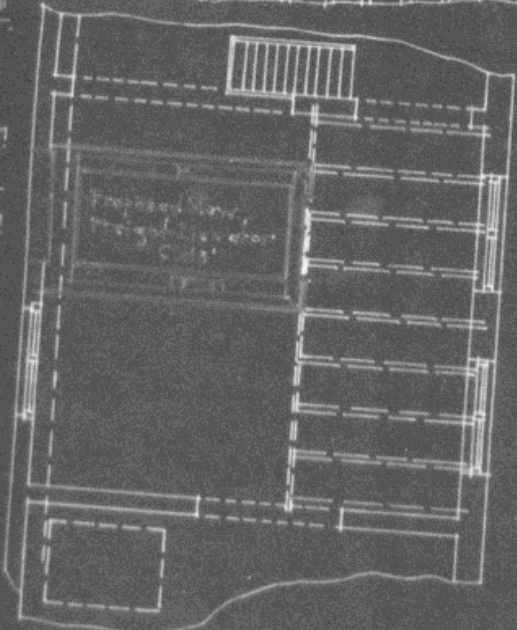


Basement Plan

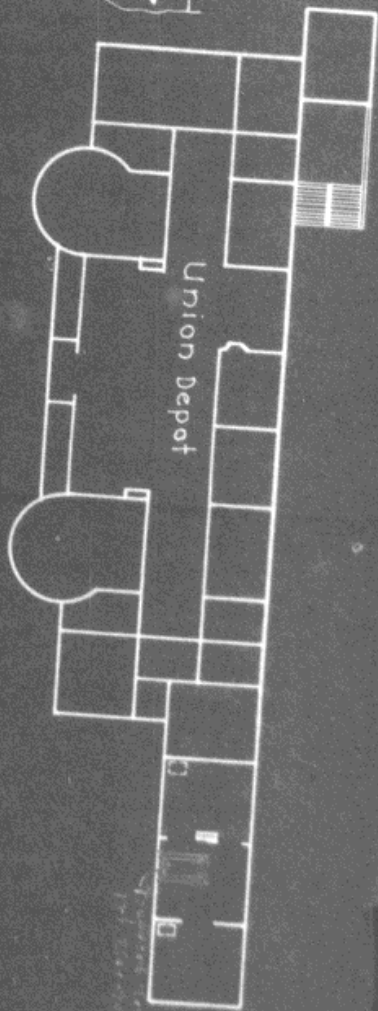


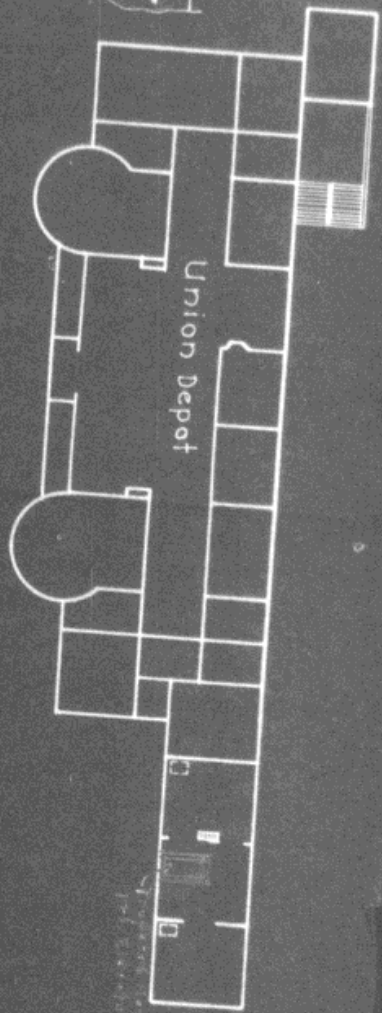
Scale 1/8" = 1'

First Floor Plan

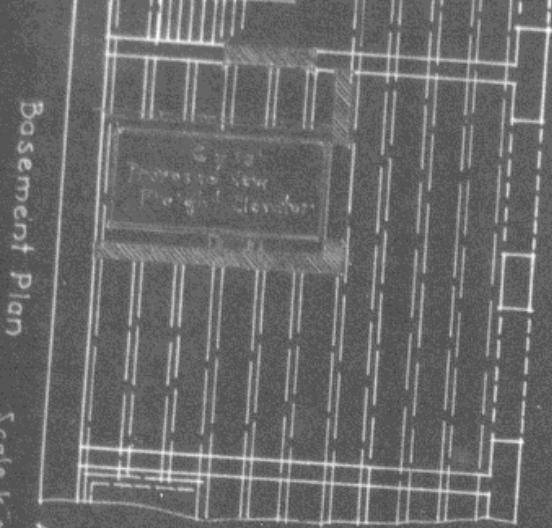


Scale 1" = 40'



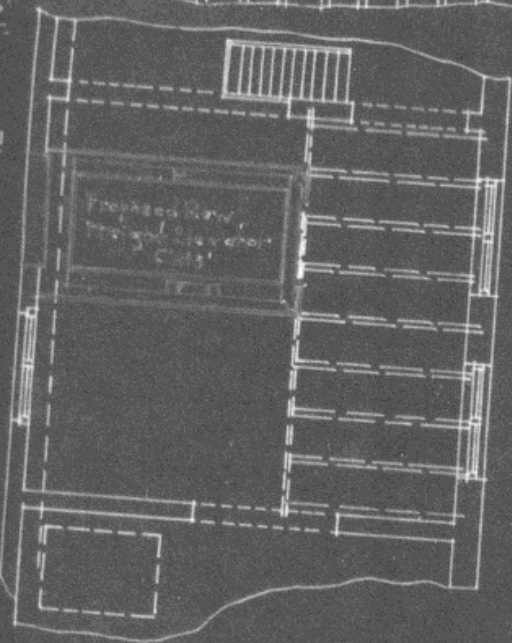


Scale 1"=40'



Basement Plan

Scale 1/8"=1'



First Floor Plan

Lake Superior Div. N. P. Ry. Duluth Terminals
 Sketch Showing
Proposed Freight Elevator in
Express Room in Union Depot
DULUTH MINN.
 Scale as Shown
 Office of Chief Engr. St. Paul, Minn. Feb. 10, 1921.
 Valuation Section No. 1 of Minn.