

N O R T H E R N P A C I F I C R A I L W A Y C O M P A N Y

OFFICE OF GENERAL MECHANICAL SUPERINTENDENT

DISTRIBUTION OF POWER

JUNE 1st 1943

The following changes were made in assignment of locomotives during the month.

Rocky Mountain Division locomotive No.1841 was transferred to the Yellowstone Division.

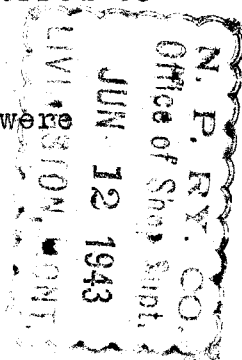
Rocky Mountain Division locomotive No.2610 was transferred to the Tacoma Division.

Idaho Division locomotive No.1825 was transferred to the Saint Paul Division.

Idaho Division locomotive No. 1848 was transferred to the Yellowstone Division.

Idaho Division locomotives Nos.1729 and 1818 were transferred to the Rocky Mountain Division.

Total number of locomotives assigned 853.



E. L. GRIMM,

General Mechanical Superintendent